

# Terrigal Public School

## Back to school 2020



## Welcome to your school

We're excited your new school facilities are ready for you to use.  
The upgrade to your school includes:



A new building with **10**  
flexible learning spaces



Upgraded administration  
facilities

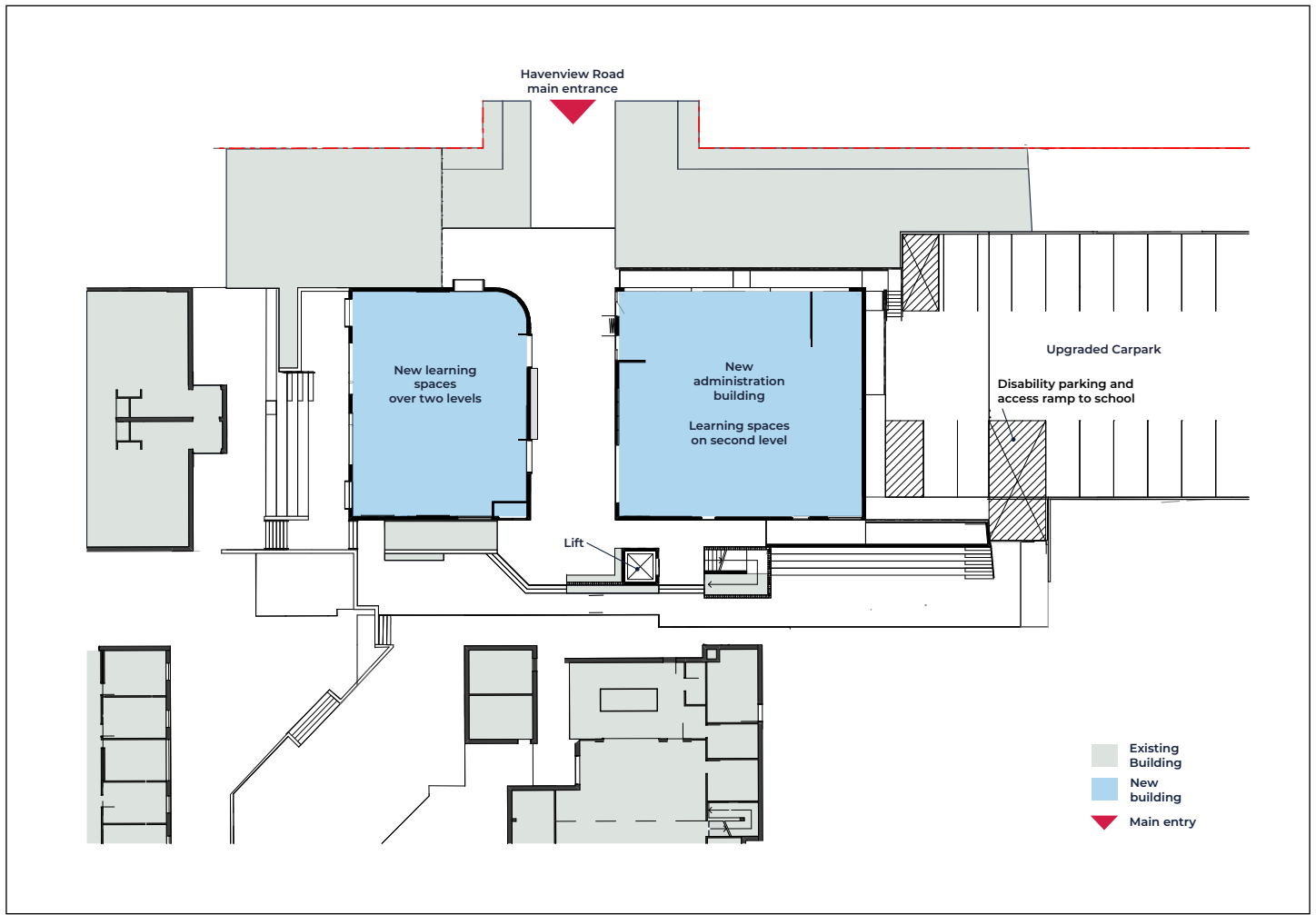


Disability carpark with  
ramp access to the school



Installation of a lift

Thank you for your patience during construction. We are thrilled to deliver this project for your school community and hope you enjoy your new spaces. Share your back to school experience with **#Ready2020**.



Access to new school buildings from Term 1 2020

## Message from your Principal

As we start the 2020 school year we are excited to occupy and use the upgrade to our school. Our new learning spaces, administration and upgraded disability carpark will be a great boost to our school.

Moreover, the upgrade of our ten new classrooms is amazing and continues our focus on quality teaching. The design allows teachers more flexibility to implement innovative and connected learning.

Shared spaces and access to additional technology will mean more opportunities for creative and inventive thinking.

Our focus on caring for the environment continues with solar panels, passive solar design features and 'energy use' monitoring boards allowing us to minimise our reliance on traditional electricity sources in the new facility.

The new administration space provides improved facilities to serve the needs of students, families and staff.

The upgrade to our school includes a lift which allows improved access to the second level of the school. This will be most welcomed, especially by parents and carers with prams.

With our upgrade we now have modern facilities to enable our students to become successful learners, displaying confidence and creativity, along with the knowledge and skills to become active and informed citizens of the future, living and working successfully in the 21st Century.

Thank you to our Parents and Citizens team and staff representatives for their input into the design and construction of our beautiful new building.

Thank you also to all students, staff, families and the local community for your patience during construction.

**Michael Burgess**  
Principal, Terrigal Public School

# What to expect on Day 1

---

Students will move into their new classrooms from 29 January 2020.

The classes that will use the new spaces were determined over the summer holidays. Year 5 and 6 will occupy eight spaces on the upper floors and Kindergarten will use two spaces on the ground floor.

The school entrance has been reinstated and access is from Havenview Road.

The location of the new facilities and the main entrance are identified on the school map.

# Innovative learning environments

---

The upgrade to Terrigal Public School has been completed. This exciting project now delivers innovative learning environments for the next generation of young minds.

Innovative learning environments provide flexibility where teachers can provide opportunities for student engagement. The learning spaces:

- are adaptable to accommodate small or large groups
- include learning neighbourhoods with flexible spaces that allow students to use technology in a variety of settings
- provide opportunities to enhance skills in collaboration, communication, critical thinking, problem solving and creativity.







## Frequently asked questions

### What is being delivered in the upgrade to Terrigal Public School?

The upgrade includes permanent teaching spaces for 10 classrooms and upgraded existing facilities including:

- innovative learning spaces
- administration
- disability carpark with ramp access to the school
- upgrade to staff carpark
- lift.

### Which classes are being relocated?

Year 5 and 6 will occupy eight spaces on the upper floors and Kindergarten will occupy the two ground floor learning spaces of the new building.

### Will there be any changes to the school entrance?

The school entrance has been reinstated and access is via Havenview Road.

### Will there be any changes to the Out of School Hours Care?

No, it will continue to operate as normal.

### When will the demountable classrooms be removed?

Two demountable buildings were removed in late 2019. It is anticipated that all remaining demountables will be removed in early 2020.

### Will there be any changes to parking, staff parking, Kiss and Drop area or the bus stop?

The staff carpark and the disability carpark have been upgraded to enable improved accessibility to the school for staff, students and visitors.

There are no changes to the bus stop or speed zones.

## Contact us

For more information about this project contact School Infrastructure NSW:

**Website:** [schoolinfrastructure.nsw.gov.au](https://schoolinfrastructure.nsw.gov.au)

**Email:** [schoolinfrastructure@det.nsw.edu.au](mailto:schoolinfrastructure@det.nsw.edu.au)

**Phone:** 1300 482 651

.....  
For information about school activities and operations, contact the school directly:

**Principal:** Michael Burgess

**Website:** [terrigan-p.schools.nsw.gov.au](https://terrigan-p.schools.nsw.gov.au)

**Email:** [terrigan-p.school@det.nsw.edu.au](mailto:terrigan-p.school@det.nsw.edu.au)

**Phone:** 02 4384 4599