



Artist impression of the entrance at 100 Tallawong Road, Rouse Hill (subject to change)

New primary school in Tallawong

Information pack | January 2023

The NSW Government is investing \$8.6 billion in school infrastructure over the next four years, continuing its program to deliver 160 new and upgraded schools to support communities across NSW. This builds on the more than \$9.1 billion invested in projects delivered since 2017, a program of \$17.7 billion in public education infrastructure.

The NSW Department of Education is committed to delivering new and upgraded schools for communities across NSW. The delivery of these important projects is essential to the future learning needs of our students and supports growth in the local economy.

We are continuing to plan for new primary school needs in Tallawong to support the growing student community. The project will deliver 2 new schools with facilities to cater for the growing population. These will include:



**New general
learning spaces**



Support units



Amenities



**Modern core facilities including
canteen, hall and library**



Open play spaces

Masterplans are finished

The masterplanning phase for the two schools is now finished. The masterplans identify a proposed location of the buildings and their footprints within the new school sites.

Now that the masterplan is finalised, the project moves into the concept design phase. Concept design involves consultation with the schools, consultants and the department's technical stakeholder group to confirm the final location of the facilities and functional spaces within buildings.








Throughout concept design and beyond, we will consult with principals and staff members from surrounding schools. This will ensure the design supports the operational and educational requirements for the new schools and therefore the design is subject to change.

91 Schofields Road

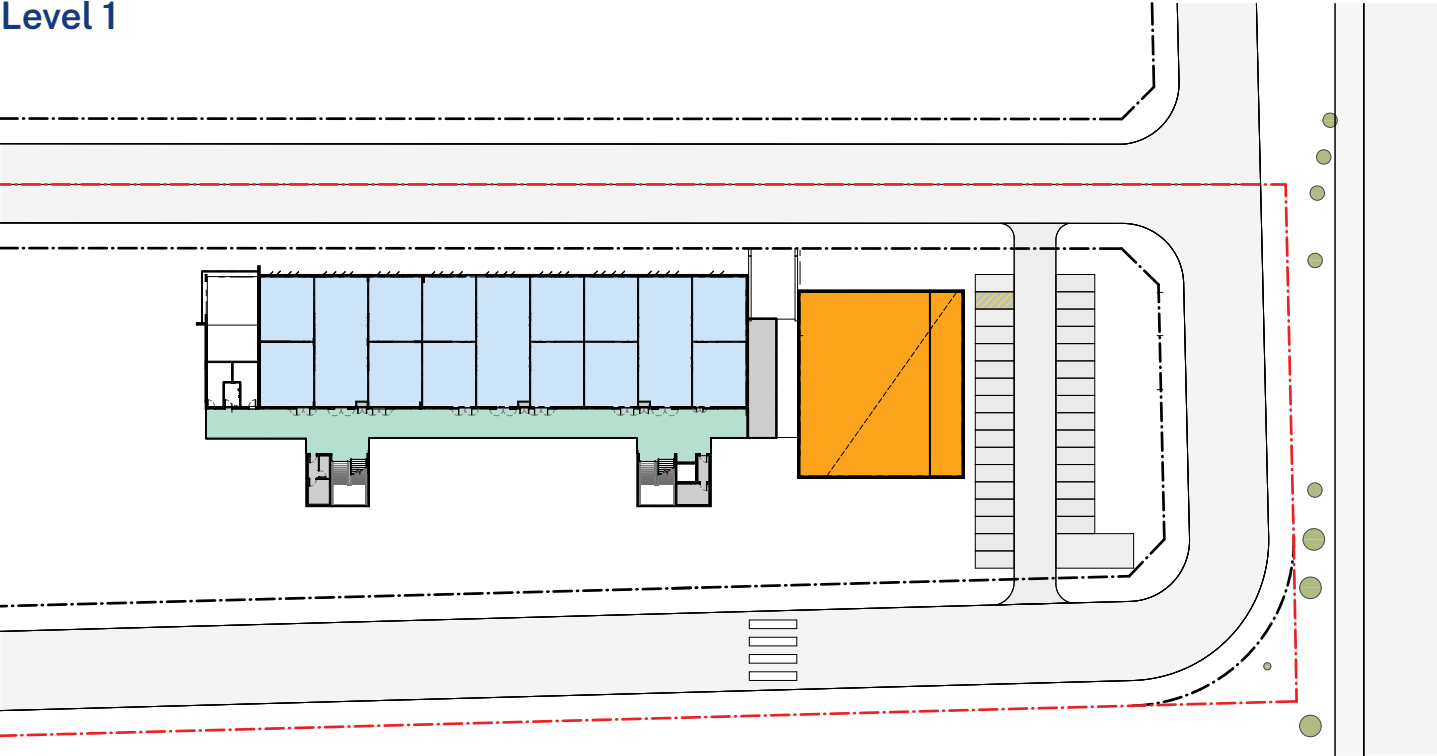
The masterplan for the school at 91 Schofields Road has been developed to cater for 600 students and will consist of a 3-level school with support units, general learning spaces and core facilities such as a library, hall and canteen. Please be advised the below site maps are indicative only and are subject to change.

Ground floor

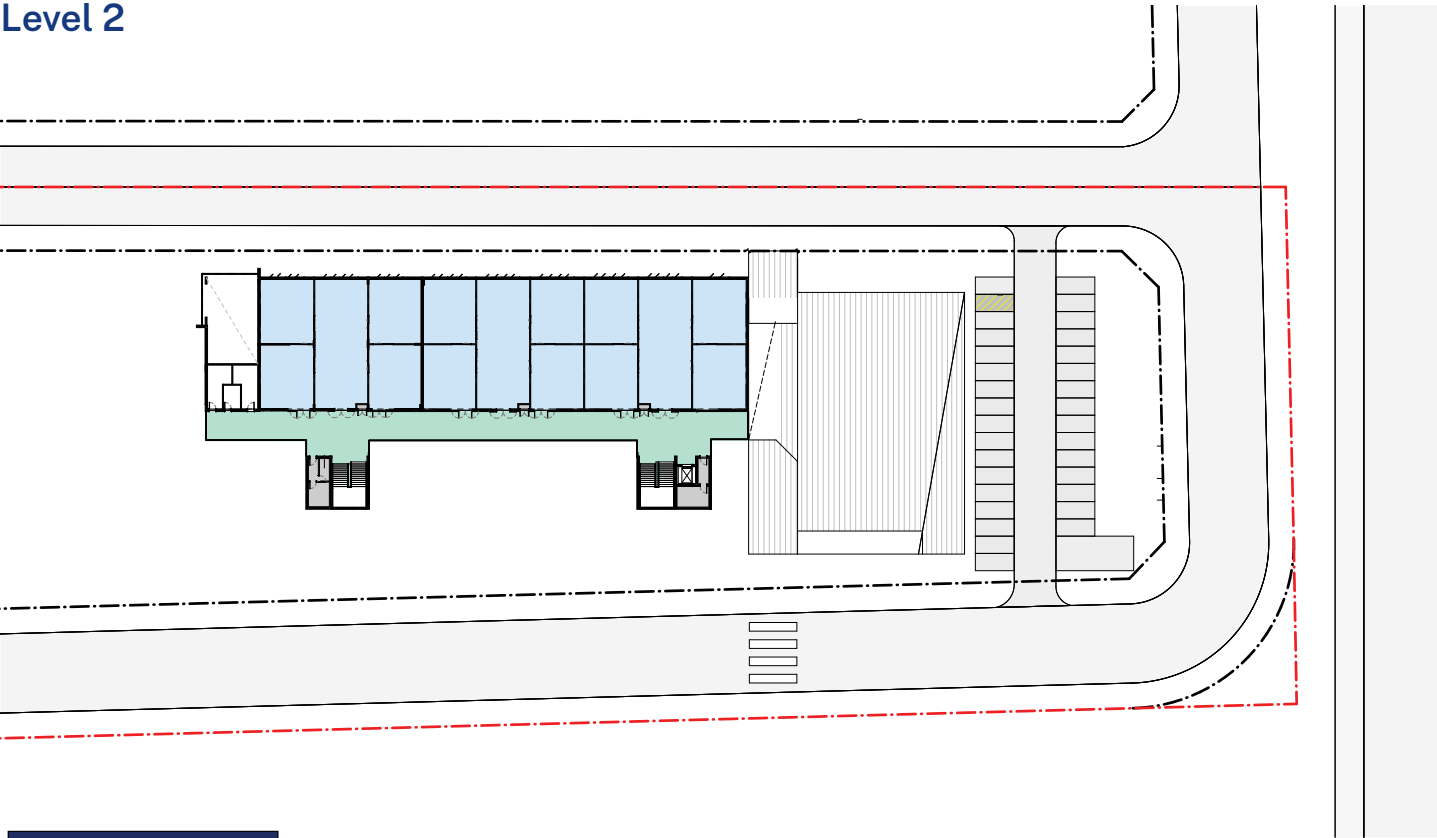






| LEGEND | |
|---------------------------------------------------------------------------------------------------------------------------------------------------|-------------------------------------------------------------------------------------------------------------------|
|  Support units with store room, learning commons and amenities |  Covered outdoor learning area |
|  Library |  Storage |
|  Administration and staff room |  Play area |
|  Hall, canteen and OSHC | |

Level 1



Level 2

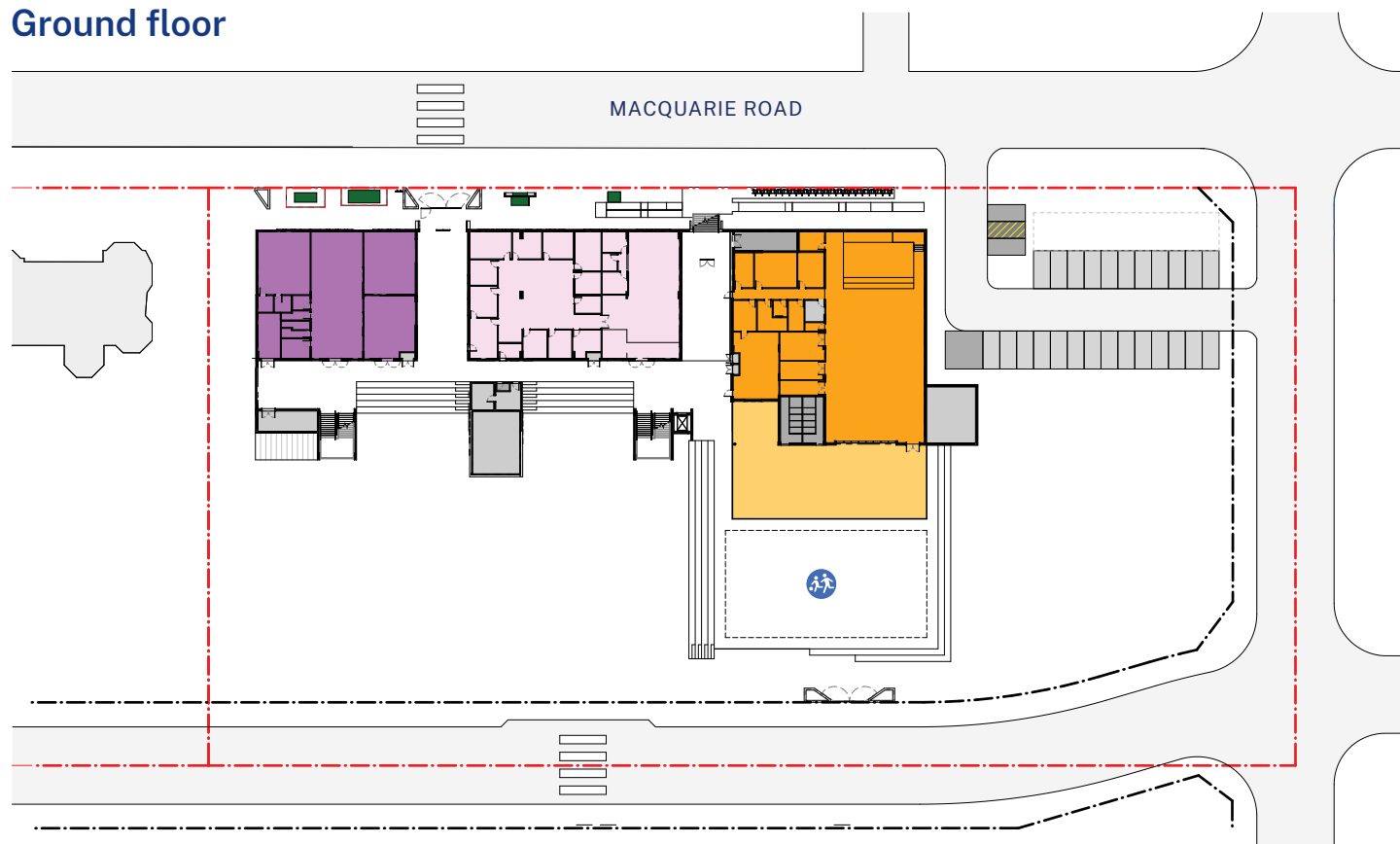


| LEGEND | |
|------------------------------------------------------------------------------------|-------------------------|
|  | General learning spaces |
|  | Covered walkway |
|  | Hall (below) |
|  | Storage |







100 Tallawong Road

The masterplan for the school at 100 Tallawong Road is being planned to cater for 600 students and will consist of a 3-level school with support units, general learning spaces and core facilities such as a library, hall and canteen. Please be advised the below site maps are indicative only and are subject to change.

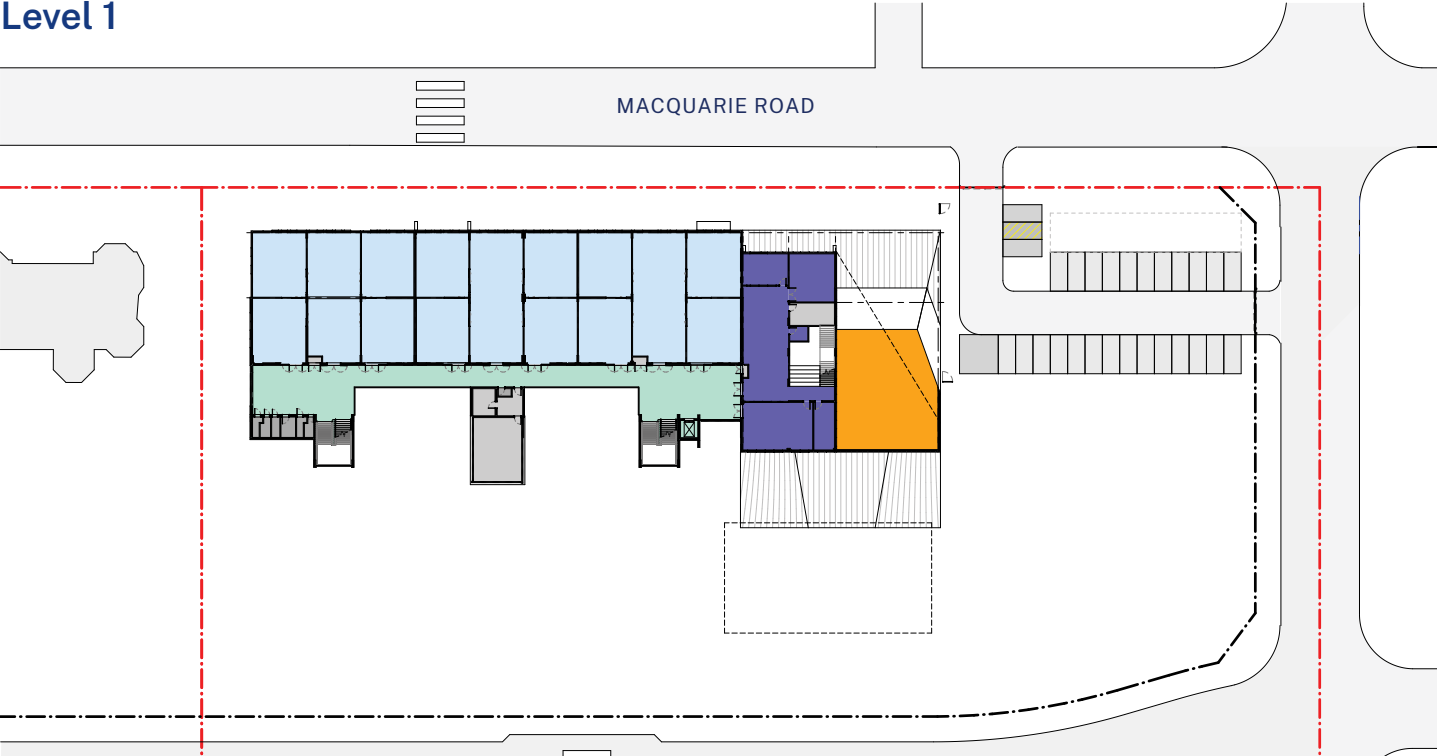
Ground floor



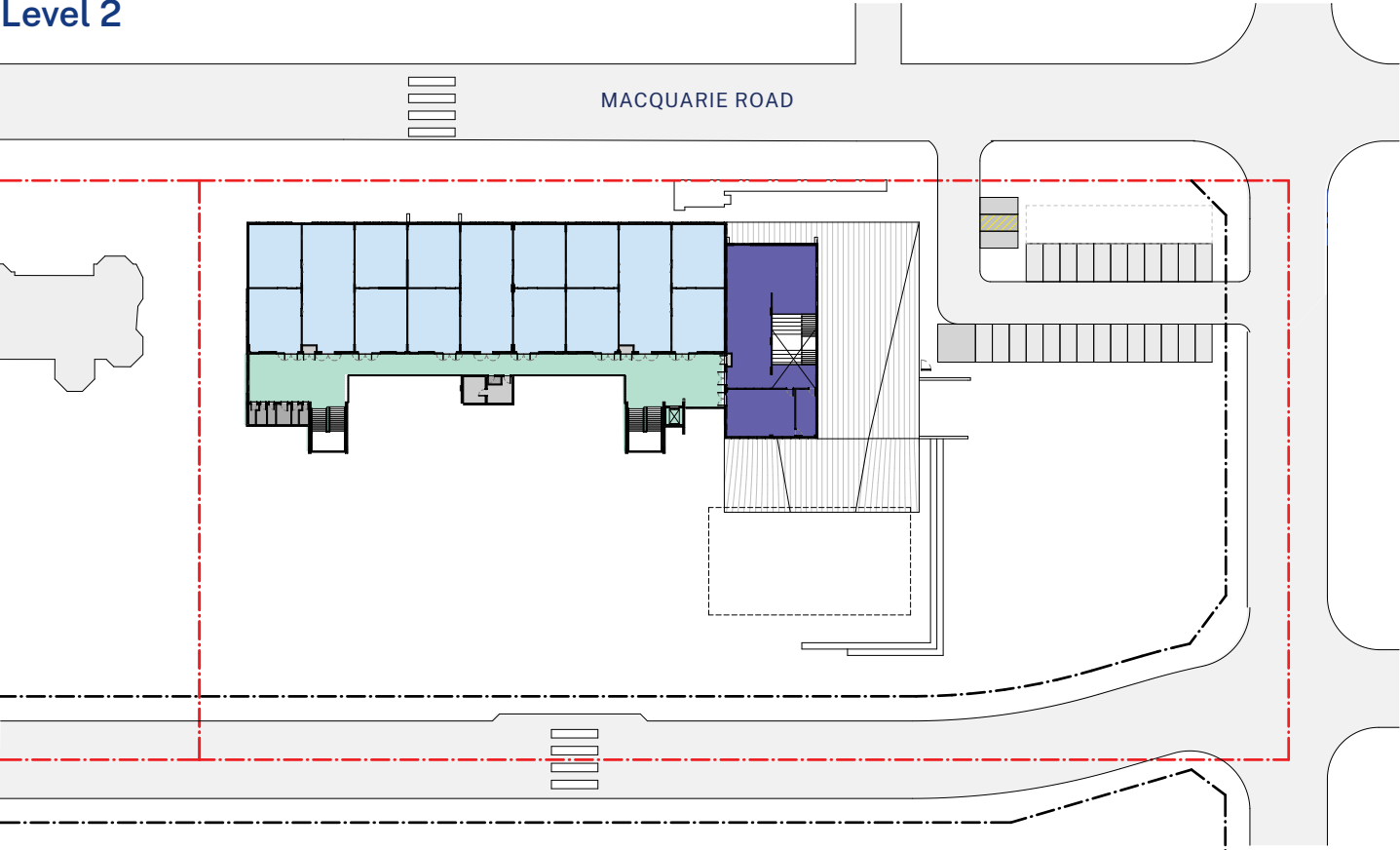
LEGEND

| | | | |
|-------------------------------------------------------------------------------------|---------------------------------------------------------------|-------------------------------------------------------------------------------------|-----------|
|  | Support units with store room, learning commons and amenities |  | Storage |
|  | Administration and staff room |  | Play area |
|  | Hall, canteen and OSHC | | |
|  | Covered outdoor learning area | | |

Level 1



Level 2



LEGEND

| | |
|-------------------------------------|---------------------|
| <div></div> General learning spaces | <div></div> Storage |
| <div></div> Covered walkway | |
| <div></div> Hall (below) | |
| <div></div> Library | |

The planning process

The new schools will use the State Significant Development (SSD) planning pathway to proceed. Once we have submitted the SSD application for the project, the NSW Department of Planning and Environment (DPE) will assess the application.

Although the planning approvals for both sites are being pursued at the same time, it is likely that the site at 100 Tallawong Road will be built first as the infrastructure to the site is available.

Construction of the new school at 91 Schofields Road will start once the surrounding transport and road infrastructure has been developed and upon reassessment of local needs.

Completing the statutory planning process for both schools at the same time will assist the construction to begin as soon as possible.



Artist impression of the new school at 91 Schofields Road (subject to change)



Artist impression of the school at 100 Tallawong Road (subject to change)

Frequently asked questions

What is a State Significant Development application?

State Significant Development (SSD) applications are used for projects that have special significance to the people and State of NSW. The Department of Planning and Environment (DPE) is responsible for the planning approval process for SSD applications, rather than local council.

What is the school intake area for the new primary school?

The school enrolment intake area (sometimes known as a catchment) will be confirmed closer to the school opening and will be based on the most up to date demographic data and detailed projections on the number of school aged children living in the local area at the time the school opens.

We will publish the intake area and enrolment information for this project once construction is underway. In the meantime, 'School Finder' is an online tool for parents to use to locate NSW public schools in your intake area. This can be accessed at education.nsw.gov.au/school-finder.

How will the school be built?

Modern construction methods using lightweight structures and modular technology will be the preferred approach for this project. The method consists of combining the manufacture of building components, such as wall systems and façades, in a safe, clean and efficient factory environment off-site with onsite assembly.

This approach can reduce on-site construction assembly time by up to 30 per cent and provide an opportunity for the local workforce to be involved in the assembling of the new school. More information about how we build schools can be found at the following link: <https://edu.nsw.link/SINSW-Construction>

What design stage is the project currently in?

Now that the masterplan is finalised, the project moves into the concept design phase. Concept design involves consultation with the schools, consultants and the department's technical stakeholder group to confirm the final location of the facilities and functional spaces within buildings.

Throughout concept design and beyond, we will consult with principals, staff members and selected stakeholders to ensure the design supports the operational and educational requirements for the new schools.

What are the next steps?

Next steps include the development of the concept design for both schools and submission of SSD planning applications. After the applications are lodged, the project will be placed on public exhibition, allowing the community and other stakeholders to make comments. We expect this will be later in 2023. Once the development application has been approved, a building contractor can be appointed and construction work can start.

The project will have community engagement opportunities moving forward, including ongoing engagement and consultation with the school community and local authorities.






Artist impression of the new school at 91 Schofields Road (subject to change)

Keep up to date

You can sign up to the project's mailing list by using the contact us form on the project page for a New primary school in Tallawong. You can find the page by going to the SINSW website and using the search function in the home page.

Stay informed

| | |
|-------------------------------------------------------------------------------------|------------------------------------------------------------------------------------------------------------------------------------------------------------------------------|
|  | Website Stay up to date by visiting the School Infrastructure NSW website schoolinfrastructure.nsw.gov.au |
|  | Email Contact the Community Engagement team by emailing schoolinfrastructure@det.nsw.edu.au |
|  | Phone Contact us between 9 am and 5 pm, Monday to Friday on 1300 482 651 |

| | |
|-------------------------------------------------------------------------------------|-----------------------------------------------------------------------------------------------------------------------------------------------------------------------------|
|  | For a Translation and Interpreting Service call 131 450 and ask them to call the Department of Education - School Infrastructure NSW on 1300 482 651 . |
|-------------------------------------------------------------------------------------|-----------------------------------------------------------------------------------------------------------------------------------------------------------------------------|

