

Sutherland Public School upgrade

Information pack – December 2024



Artist impression of the exterior of the new multipurpose hall (subject to change)

As part of the NSW Government's plan to rebuild public education, the 2024-25 Budget is delivering record education funding, including \$8.9 billion for new and upgraded schools. This targeted investment will ensure growing communities get access to a world class public education.

These funds will help to upgrade Sutherland Public School, constructing a new multipurpose hall with:



a stage



a canteen



storage facilities



covered outdoor learning area (COLA)



change rooms and toilets



out of hours school (OOSH)
care facilities



indoor sports court



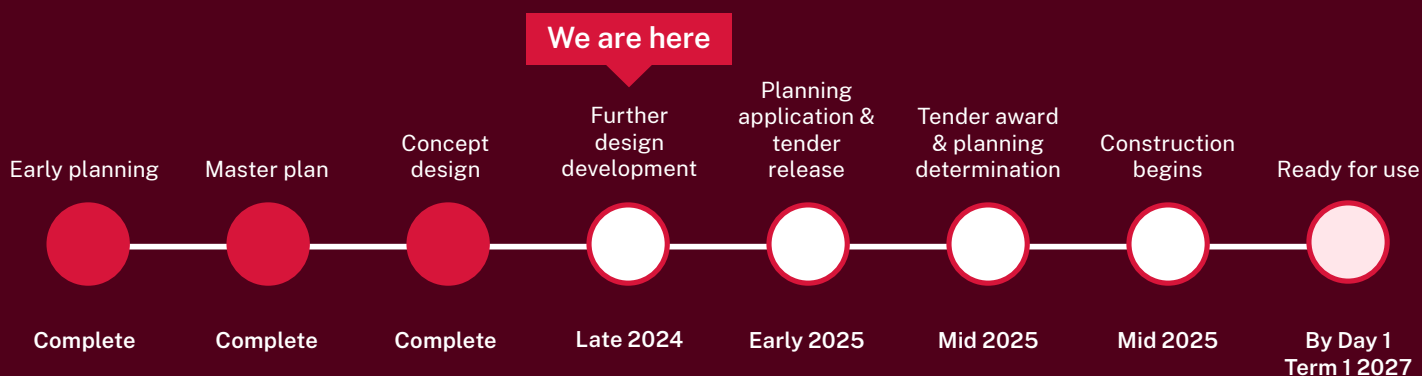
For more information

Phone: 1300 482 651

Email: schoolinfrastructure@det.nsw.edu.au

Website: schoolinfrastructure.nsw.gov.au

Project timeline



Where we are now

The concept design has been developed in consultation with the Project Reference Group (PRG), made up of school leadership and school community representatives, as well as architects and broader project team.

Next steps

In early 2025 we will submit a planning application and will advise the community when the plans are on exhibition. We are also planning to release the tender for a construction contractor in early 2025.

We expect the planning determination to be finalised by mid-2025, and also to award the construction contract at this stage.

Once the planning application has been approved and a construction contract is awarded, we will advise the community when construction will begin.

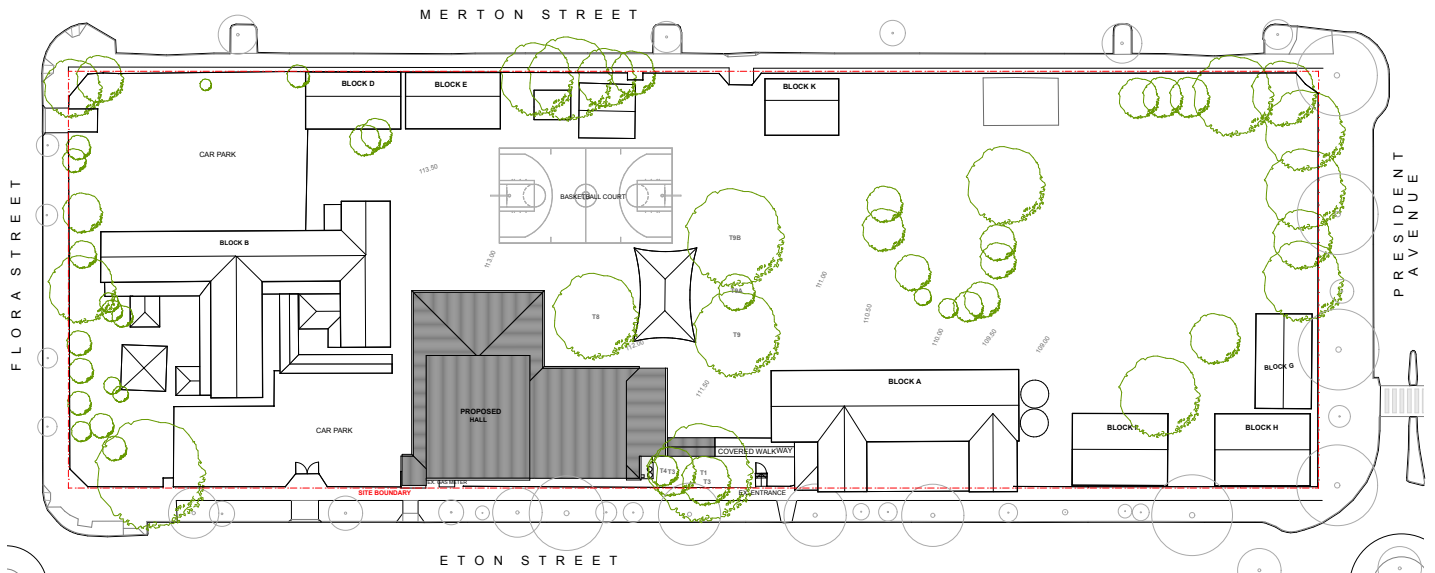


Site analysis and preferred site

We explored several potential locations for the multipurpose hall. These were analysed and presented to the Project Reference Group for their feedback.

The site chosen was the most suitable based on the following considerations:

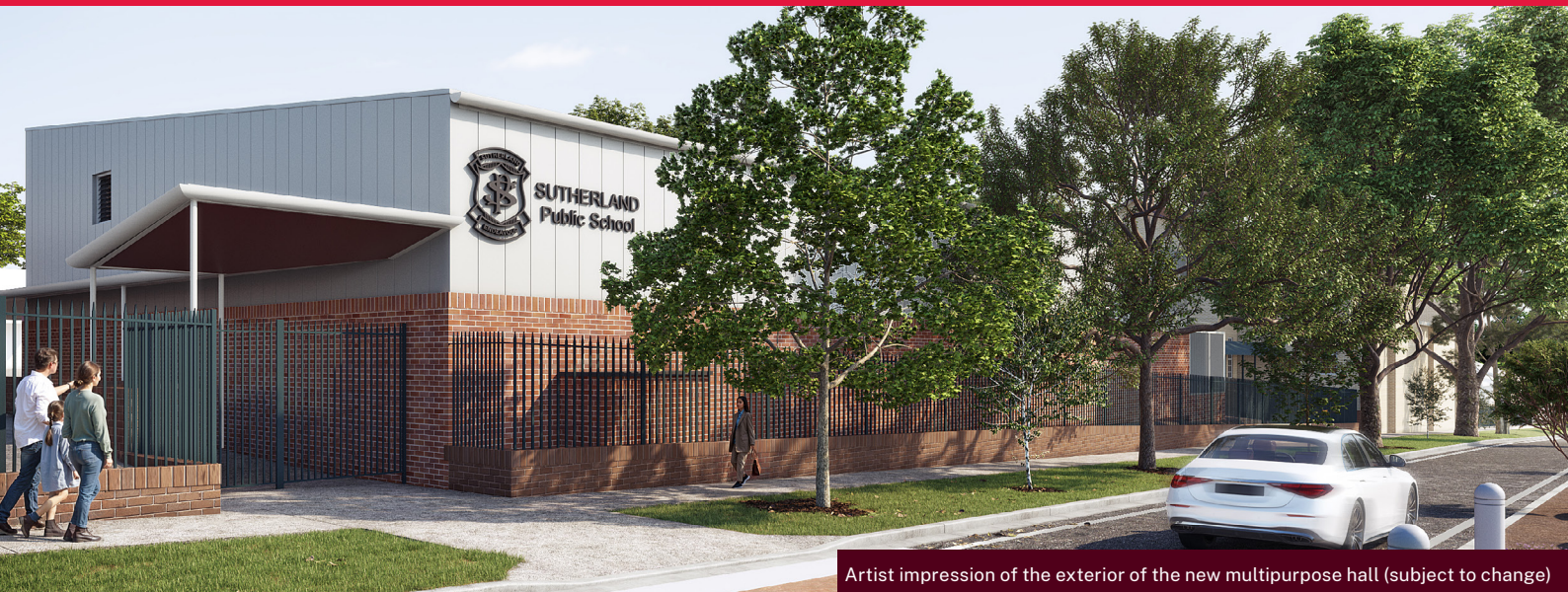
- heritage buildings on the site
- preserving existing significant trees
- maximising learning and recreational space for student connection and closeness to the street and car park.



Site map showing location of new hall (subject to change)



Artist impression of the interior of the new multipurpose hall (subject to change)



Frequently asked questions

When will the multipurpose hall be finished?

The hall is on track to open by Day 1 Term 1 2027.

Will the hall have room for the whole school?

Yes, the hall is designed to suit the student population. It will be able to hold whole school assemblies and will have a stage for performances.

More information

More information about the project can be found at edu.nsw.link/SutherlandPS. If you have any questions about this project, you can also contact us during business hours on the contact details below.

Stay up to date



To receive updates on this project by email, please scan the QR code at left and complete your details.

Please note if you live near the school site, you may still receive letterbox updates.

Contact us

For more information about this project, contact School Infrastructure:

Website: schoolinfrastructure.nsw.gov.au

Email: schoolinfrastructure@det.nsw.edu.au

Phone: 1300 482 651



For a **Translation and Interpreting Service** call **131 450** and ask them to call the Department of Education - School Infrastructure on **1300 482 651**.