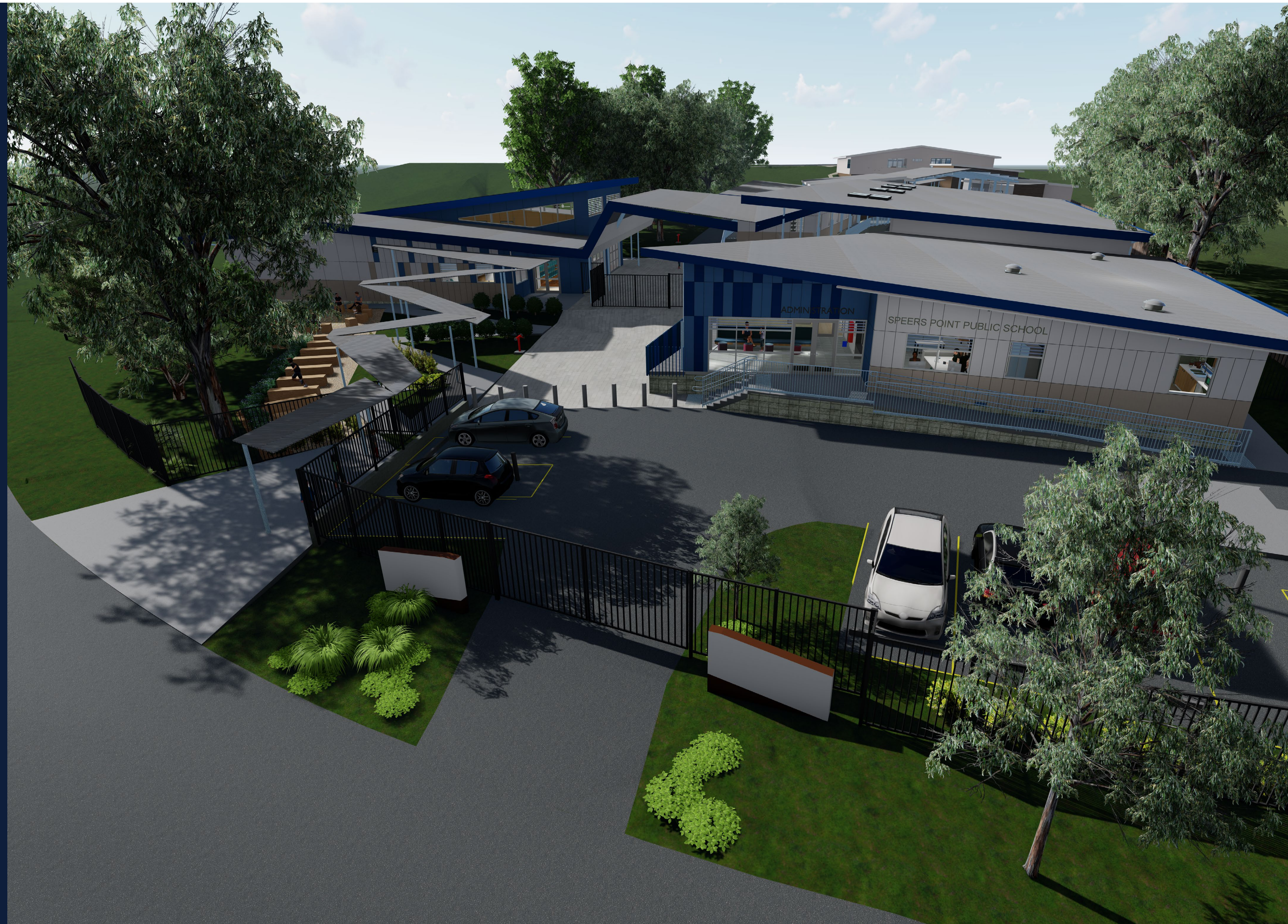


Speers Point Public School upgrade

The Speers Point Public School upgrade will provide:

- new permanent innovative learning spaces
- a new hall
- a new administration building
- a new library
- refurbishment of two existing learning spaces in Block A

A refurbishment to turn the existing library and classrooms into special education classrooms and amenities was completed as part of early works in early 2019.



Artist's impression of the Speers Point Public School upgrade

Speers Point Public School upgrade

For more information phone: 1300 482 651
Email: schoolinfrastructure@det.nsw.edu.au

Indicative site layout



Speers Point Public School upgrade

For more information phone: 1300 482 651
Email: schoolinfrastructure@det.nsw.edu.au

Architect's impressions



New library



New hall

Speers Point Public School upgrade

For more information phone: 1300 482 651
Email: schoolinfrastructure@det.nsw.edu.au

Architect's impressions



Learning space



Outdoor learning space

Speers Point Public School upgrade

For more information phone: 1300 482 651
Email: schoolinfrastructure@det.nsw.edu.au

What are innovative learning spaces?

Innovative learning prepares students across all curriculum areas and learning stages with skills and capabilities to thrive in a rapidly changing and interconnected world. It engages students based on their ability, interests and learning preferences and provides flexible, technology-rich teaching spaces for one-to-one, small groups and whole of class activities. Innovative learning spaces encourage collaborative learning between students and teachers.



Space

- There are zones for different activities, with varied furniture and resources – such as booths, standing tables, studios and bean bags.
- Spaces can be connected by glass or sliding doors to extend the learning space.
- No front of classroom.
- Spaces are designed to be shared by multiple classes.



Students

- Students have the ability to move around the learning space to encourage collaborative learning.
- Students working across a range of projects simultaneously.
- Students engaged in hands on learning, building and testing.



Teachers

- Movement around the learning space rather than the teacher being at the front of the room.
- Teachers planning learning together, for example in stage or faculty teams.
- Teachers teaching together to better meet the needs of students.



Learning

- Personalised learning, so each student is learning at their own level and pace.
- Students learning in large groups, small groups or individually.
- Students are working towards the same project in different subject areas, encourages cross disciplinary learning.



Technology

- Technology integrated into the space to extend learning.
- Accessibility of technology to suit different activities at point of need, for example filming and recording equipment.
- WiFi accessible across all learning areas.