



Sir Joseph Banks High School upgrade

Planning update

September 2022

Investing in our schools

The NSW Government is investing \$8.6 billion in school infrastructure over the next 4 years, continuing its program to deliver 160 new and upgraded schools to support communities across NSW. This builds on the more than \$9.1 billion invested in projects delivered since 2017, a program of \$17.7 billion in public education infrastructure.

The NSW Department of Education is committed to delivering new and upgraded schools for communities across NSW. The delivery of these important projects is essential to the future learning needs of our students and supports growth in the local economy.

Sir Joseph Banks High School upgrade

The NSW Government is increasing its investment in public education infrastructure, with funding for 23 new and upgraded school projects announced as part of the NSW 2022/23 Budget. This includes an upgrade to Sir Joseph Banks High School. This upgrade will include fit-for-purpose learning spaces and core facilities. This project is one of 9 major school projects that are part of the NSW Government's commitment to WestInvest, a \$5 billion infrastructure program transforming Western Sydney. The 9 schools will be modernised to deliver state of the art learning environments as the first projects announced through the fund.

Early planning has begun. At this stage of the project, site investigations and needs analysis is underway. This phase involves consideration and studies of demographic trends, education requirements, catchment boundaries, heritage requirements, transport links and possible shared area opportunities.

In the next phase of the project, consultants such as architects and project managers are appointed and an investigation and review of the site takes place, along with development of the masterplan options. Doing so means that we consider the needs of the local area now and into the future, and ensures the right project is designed for the community. Once a preferred option is identified, NSW Treasury approval of the business case will tell us what we can progress to design, procurement and planning approval.

For more information contact:

School Infrastructure NSW
Email: schoolinfrastructure@det.nsw.edu.au
Phone: 1300 482 651
www.schoolinfrastructure.nsw.gov.au

A message from the Principal

I am excited to be working closely with the School Infrastructure NSW project team on an exciting upgrade to our school.

Since the additional funding was announced, our Relieving Director of Educational Leadership (Bankstown Principals Network) Mark Sutton, myself and the school leadership team have been meeting with the project team to discuss the most important needs and priorities of our school community,

We are very excited to receive a number of extra teaching and learning spaces especially as the school continues to grow in enrolments each year which will benefit not only current students but future ones as well. We look forward to working with the design team to prioritise these needs, within the budget allocated for this upgrade.

I speak on behalf of the entire school community when I say that we are extremely excited about this project and the difference it will make to the school's facilities and the learning environment for our staff and students.

Charles Borg - Relieving Principal

How can I get involved?

We are committed to working together with our school communities and stakeholders to deliver the best learning facilities for students. As the project progresses we will share details with the community for feedback.

A dedicated [project page](#) has been published on the School Infrastructure NSW website, which is updated as the project progresses. You can also contact us via our community information line and email on the details below.

When will the upgrade be complete?

Development consent and engagement of a building contractor is required before we are able to provide opening dates for the upgrade. The construction program needs to be determined in consultation with the builder. We will share this information as soon as we are able to.

To give you an idea, typically the business case process may take 6-12 months, statutory planning around 6-12 months, and construction around 18-24 months – so we are looking at several years. We are committed to delivering the upgraded school as soon as practically possible and will look for opportunities to save time where we can, while still complying with best practice and governance requirements.

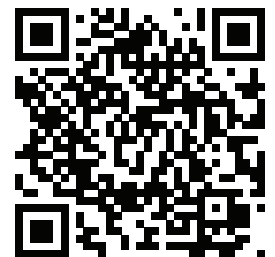
Want to know more about how we build and upgrade schools?

We design and deliver schools to suit the individual needs of the local school community. We harness opportunities and solve challenges. As a result, no two schools are exactly the same.

What remains consistent is school infrastructure that empowers teachers to prepare students with the skills and capabilities they need to thrive in a rapidly changing and interconnected world.

Take a look at some of the upgrades we have delivered and see how these varied spaces support teaching and learning.

Simply scan the QR code, or visit edu.nsw.link/SchoolShowcase.



For a **Translation and Interpreting Service**, call **131 450** and ask them to call the Department of Education - School Infrastructure NSW on **1300 482 651**.

For more information contact:

School Infrastructure NSW
Email: schoolinfrastructure@det.nsw.edu.au
Phone: 1300 482 651
www.schoolinfrastructure.nsw.gov.au

Sir Joseph Banks High School upgrade

The information below takes you through the journey of upgrading or building a new school.

Early planning

- Consideration and studies of demographic trends, education requirements, the condition of the existing school buildings, catchment boundaries, heritage requirements, transport links and partnership opportunities.
- Doing so means that we:
 - consider the needs of the local area now and into the future.
 - ensure the right school is designed for the community.
- An important step before an architect or other contractors are appointed and official community engagement commences.

Planning

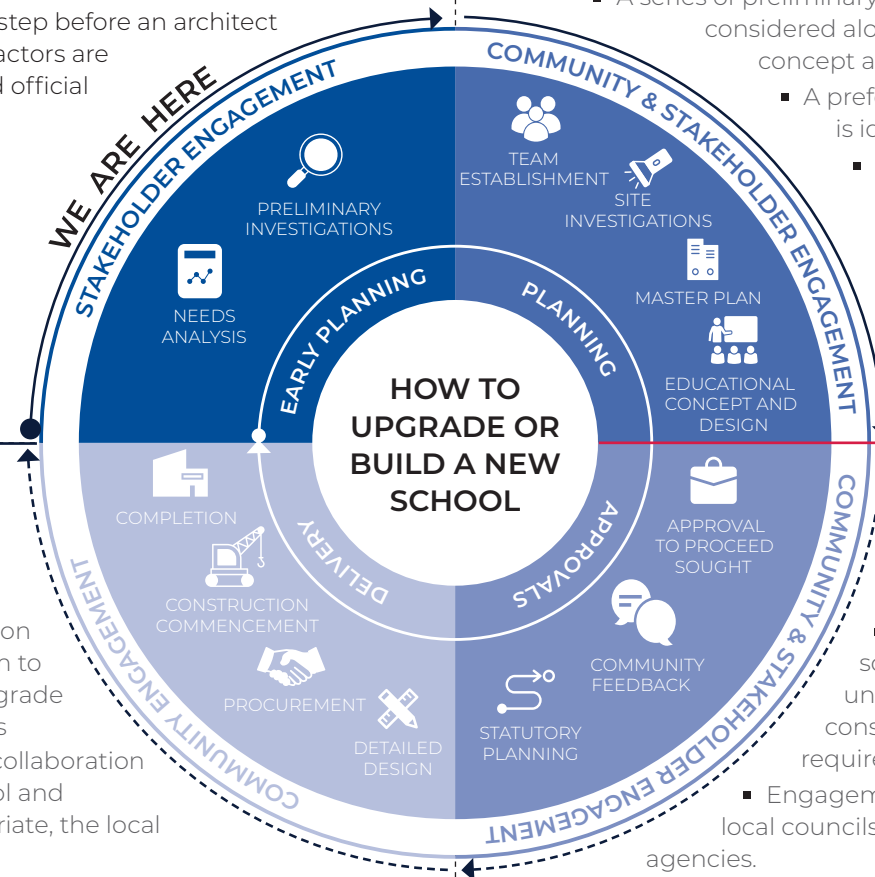
- Consultants such as architects and project managers are appointed.
- Investigation and review of site and development of master plan options.
- Master planning considers options for the general size, shape and form of buildings for a specific school site.
- A Project Reference Group (PRG) is established.
- Operational, educational and service delivery factors are understood and considered by the PRG.
 - A series of preliminary master plan options are considered along with the educational concept and design for the school.
 - A preferred concept design option is identified.
 - Once a preferred option is identified approval is needed in order to progress from planning through to project delivery.

Delivery

- The construction works program to deliver the upgrade to the school is developed in collaboration with the school and where appropriate, the local community.
- Ongoing consultation with Principal, staff and other school users.
- Throughout detailed design and construction updates are provided to the local community.

Approvals

- Workshops continue with school and local community to understand challenges and constraints and identify future requirements.
 - Engagement of technical specialists, local councils and other government agencies.
 - Statutory planning approval process.
 - Opportunity for local community to view and provide feedback upon submission of the Development Application.
 - Scope of work and concept design is further defined.



For more information contact:

School Infrastructure NSW
 Email: schoolinfrastructure@det.nsw.edu.au
 Phone: 1300 482 651
www.schoolinfrastructure.nsw.gov.au

