



Artist impression of the VET facilities from Johnson Avenue

Seven Hills High School

Project update | May 2022

Investing in our schools

The NSW Government is investing \$7.9 billion over the next four years, continuing its program to deliver 215 new and upgraded schools to support communities across NSW. This is the largest investment in public education infrastructure in the history of NSW.

The NSW Department of Education is committed to delivering new and upgraded schools for communities across NSW. The delivery of these important projects is essential to the future learning needs of our students and supports growth in the local economy.

Project overview

Planning is continuing for an upgrade of Seven Hills High School to provide new specialist vocational education and training (VET) facilities as part of the NSW Government Vocational Schools Initiative. The proposed vocational facilities will primarily focus on three industry areas:

- Community and health services
- Construction (Electrotechnology and Plumbing)
- Supply chain (Transport, Logistics and Warehousing)

Progress Summary

A construction contract for the main works at Seven Hills High School has been awarded to Total Construction Pty Ltd. We will continue to work with the appointed contractor and their design team to further progress the schematic design and develop the program of works to deliver the new VET facilities at Seven Hills High School. We will continue to keep you up to date with the project as it progresses.

For more information contact:

School Infrastructure NSW
Email: schoolinfrastructure@det.nsw.edu.au
Phone: 1300 482 651
www.schoolinfrastructure.nsw.gov.au

Next Steps

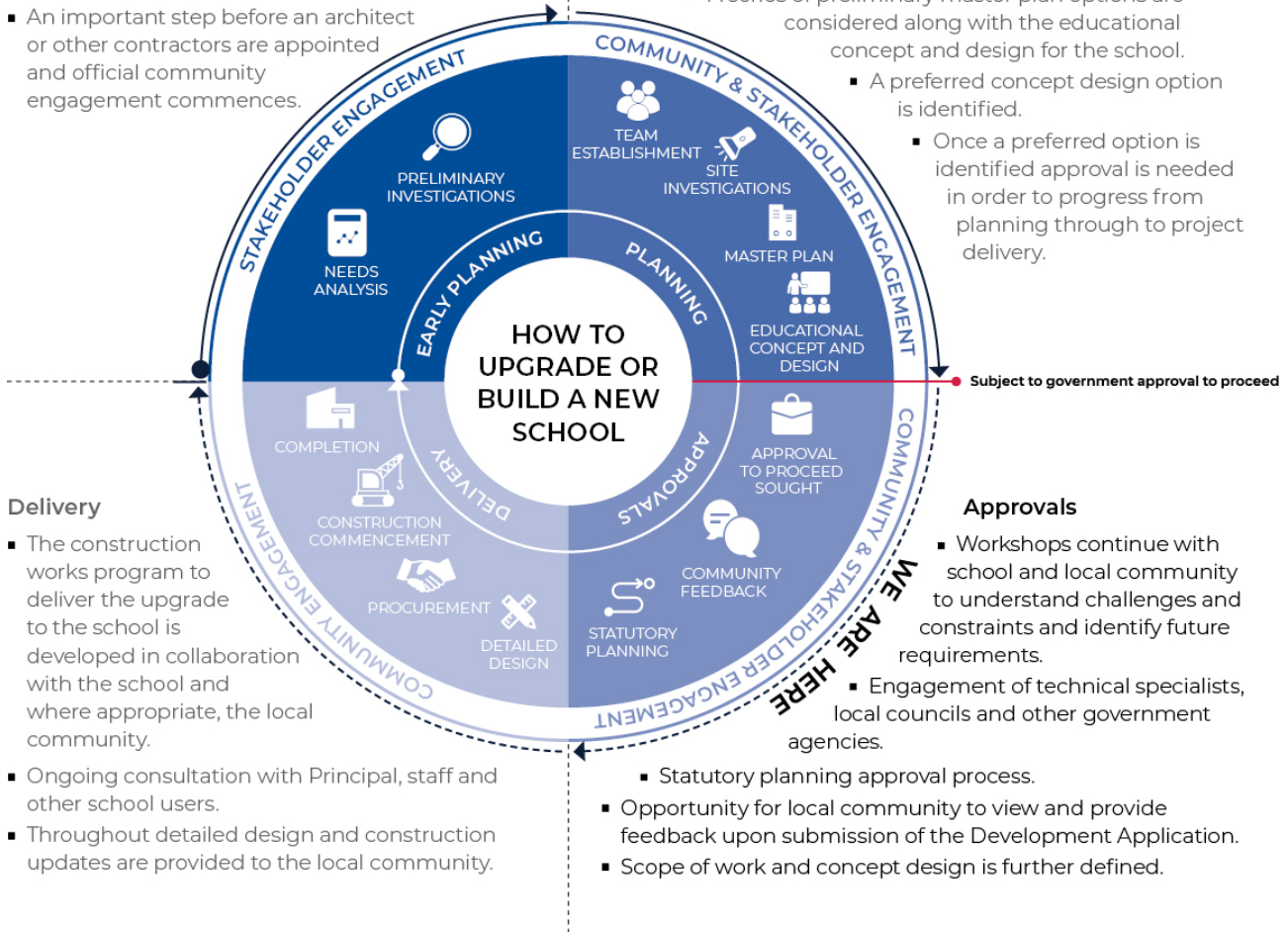
- Completion of the schematic design.
- Determination of the Development Application (DA) by Blacktown City Council and Sydney Central City Planning Panel (SCCPP).

Early planning

- Consideration and studies of demographic trends, education requirements, the condition of the existing school buildings, catchment boundaries, heritage requirements, transport links and partnership opportunities.
- Doing so means that we:
 - consider the needs of the local area now and into the future.
 - ensure the right school is designed for the community.
- An important step before an architect or other contractors are appointed and official community engagement commences.

Planning

- Consultants such as architects and project managers are appointed.
- Investigation and review of site and development of master plan options.
- Master planning considers options for the general size, shape and form of buildings for a specific school site.
- A Project Reference Group (PRG) is established.
- Operational, educational and service delivery factors are understood and considered by the PRG.
 - A series of preliminary master plan options are considered along with the educational concept and design for the school.
 - A preferred concept design option is identified.
 - Once a preferred option is identified approval is needed in order to progress from planning through to project delivery.



Delivery

- The construction works program to deliver the upgrade to the school is developed in collaboration with the school and where appropriate, the local community.
- Ongoing consultation with Principal, staff and other school users.
- Throughout detailed design and construction updates are provided to the local community.

Approvals

- Workshops continue with school and local community to understand challenges and constraints and identify future requirements.
 - Engagement of technical specialists, local councils and other government agencies.
- Statutory planning approval process.
- Opportunity for local community to view and provide feedback upon submission of the Development Application.
- Scope of work and concept design is further defined.

For more information contact:

School Infrastructure NSW
 Email: schoolinfrastructure@det.nsw.edu.au
 Phone: 1300 482 651
www.schoolinfrastructure.nsw.gov.au

