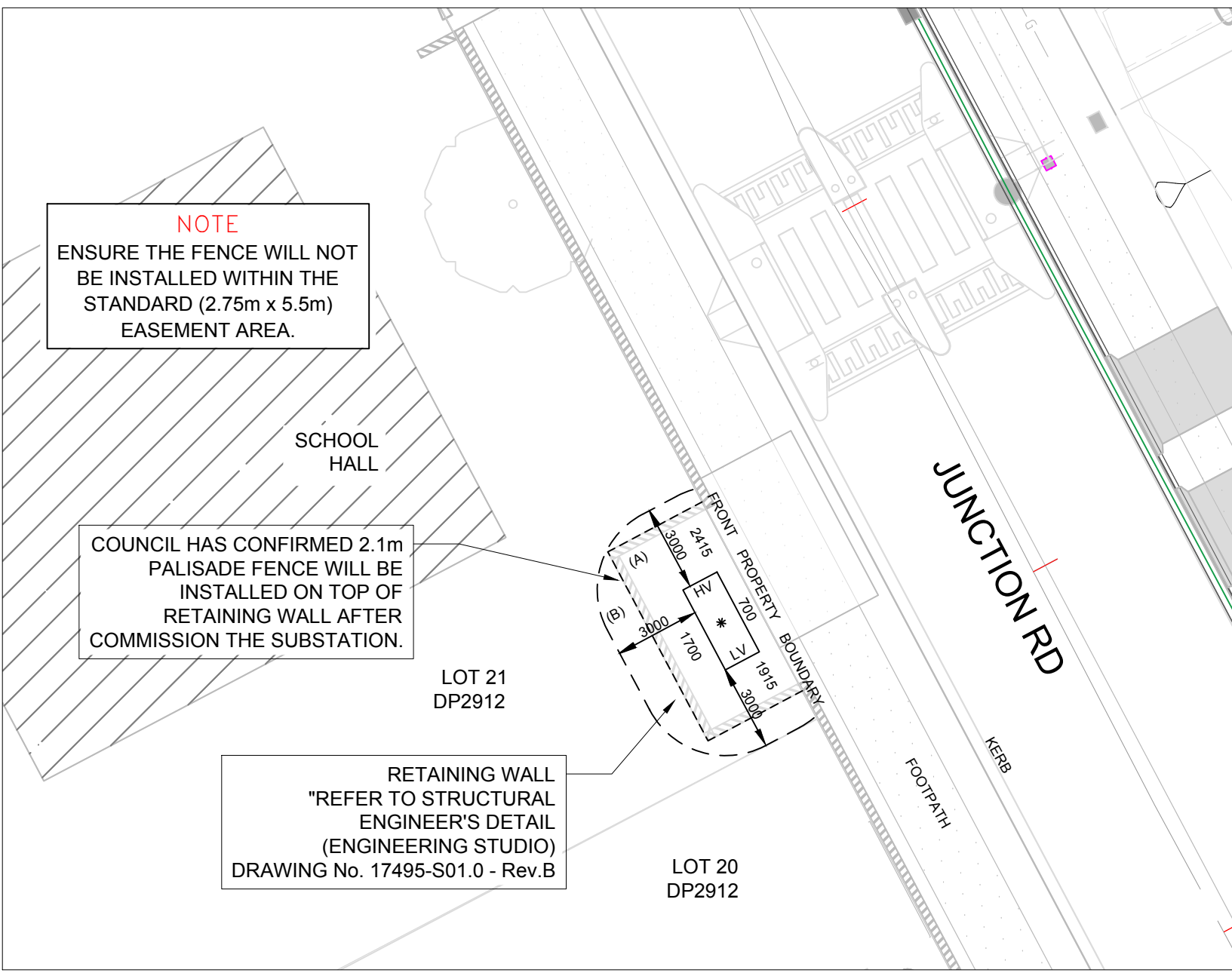


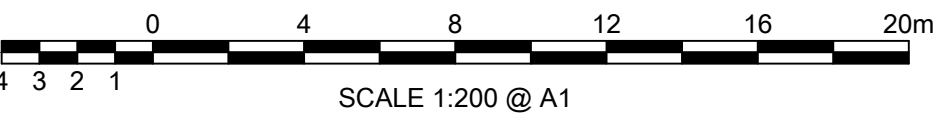
DUCT REIMBURSEMENT SCHEDULE				
NODES	CONFIGURATION	ROUTE LENGTH (m)	REIMBURSEMENT (m) X (\$)	EXISTING DUCT USAGE CHARGE (m) X (\$)
A - B	NEW (ROAD CROSSING) INSTALL 2 x 50mm 6 x 125mm UPVC DUCTS	20m	- NIL	- NIL
B - C	NEW INSTALL 2 x 50mm 4 x 125mm UPVC DUCTS	4m	- NIL	- NIL
C - D	EXISTING	4m	- NIL	- 4m of 125mm duct @ \$23/m = \$92
B - E	NEW INSTALL 6 x 125mm UPVC DUCTS	24m	- NIL	- NIL
E - F	NEW (ROAD CROSSING) INSTALL 6 x 125mm UPVC DUCTS	14m	- NIL	- NIL
F - G	NEW INSTALL 6 x 125mm UPVC DUCTS	38m	- NIL	- NIL
G - H	NEW INSTALL 4 x 125mm UPVC DUCTS	45m	- NIL	- NIL
H - J	EXISTING DIRECT BURY REPLACE WITH NEW CABLE	10m	- NIL	- NIL
TOTAL			- NIL	\$92
<div><div><div>○ SPARE DUCT</div><div>● DUCT WITH NEW CABLE</div><div>◐ DUCT WITH EXISTING CABLE</div><div>Ⓢ FUNDED BY CLIENT</div></div><div><div>● DIRECT BURIED CABLE</div><div>✕ CABLE/DUCT TO BE REMOVED</div><div>ⓔ FUNDED BY ENDEAVOUR ENERGY</div></div><div><div>⦿ NEW TRENCH</div><div>⦿ EXISTING TRENCH</div><div>○ UNDERBORE</div></div></div>				



- (A) STANDARD (2.75m x 5.5m) PADMOUNT SUBSTATION EASEMENT TO BE EXTENDED TO INCLUDE RETAINING WALL 3.75m x 7.5m.  
(B) RESTRICTION ON THE USE OF LAND IN RELATION TO THE FIRE RATING OF BUILDINGS MEASURED 3 METRES FROM SUBSTATION PLINTH
- SUBSTATION PLINTH 1.35x3.17 AT TOP OF CONCRETE (ALL OFFSETS TO PLINTH SHOWN FROM TOP OF CONCRETE)

IF A PLAN OF SURVEY, PLEASE SHOW SUBSTATION NUMBER AND AT LEAST TWO OFFSETS TO PLINTH

EASEMENT AND RESTRICTION ZONE DIAGRAM  
FOR PADMOUNT SUBSTATION 36852  
COMMON EARTHING - NON-RESIDENTIAL



CERTIFIED BY ENDEAVOUR ENERGY  
Amendment: A  
Date Approved: 23-01-2019  
Examiner's Signature: \_\_\_\_\_  
Print Name: RAVI LAL  
This Certification is issued subject to Endeavour Energy's Standard Certification Terms

WORKS COMPLETED/FIELD BOOK

CONSTRUCTED BY: \_\_\_\_\_

WORKS COMPLETED: \_\_\_\_\_

SIGNATURE: \_\_\_\_\_ DATE: \_\_\_\_\_

INSPECTED BY: \_\_\_\_\_

SIGNATURE: \_\_\_\_\_ DATE: \_\_\_\_\_

ASSET RECORDING

I: \_\_\_\_\_

OF: \_\_\_\_\_

CONTACT No.: \_\_\_\_\_

HEREBY CERTIFY THAT ASSETS MARKED AS-BUILT ON THIS DRAWING HAVE BEEN RECORDED AS PER ENDEAVOR ENERGY STANDARD SAD 0004.

SIGNATURE: \_\_\_\_\_

DATE: \_\_\_\_\_

DESIGN COMPLIANCE AND INDEMNITY

This design complies with Endeavour Energy's relevant standards as current at this time and as listed on the Endeavour Energy Accredited Service Provider's Internet site. These standards include, but are not limited to:

GT&C:	General Terms and Conditions
EMS:	Environmental Management Standard
MC:	Mains Construction Instruction
MD:	Mains Design Instruction
PDI:	Protection Design Instruction
SDI:	Substation Design Instruction
SAD 0001:	Design Drawing Standard
MM:	Mains Maintenance Instruction
SM:	Substation Maintenance Instruction
LDI 0001:	Public Lighting Electrical Design Element

Additionally, where relevant, the design complies with AS/NZS 7000 "Overhead Line Design - Detailed Procedures" published by SAI Global Ltd and other relevant Australian Standards

CONNECT INFRASTRUCTURE DESIGN PTY LTD indemnifies Endeavour Energy for any loss or damage resulting from non-compliance of the design with the above standards.

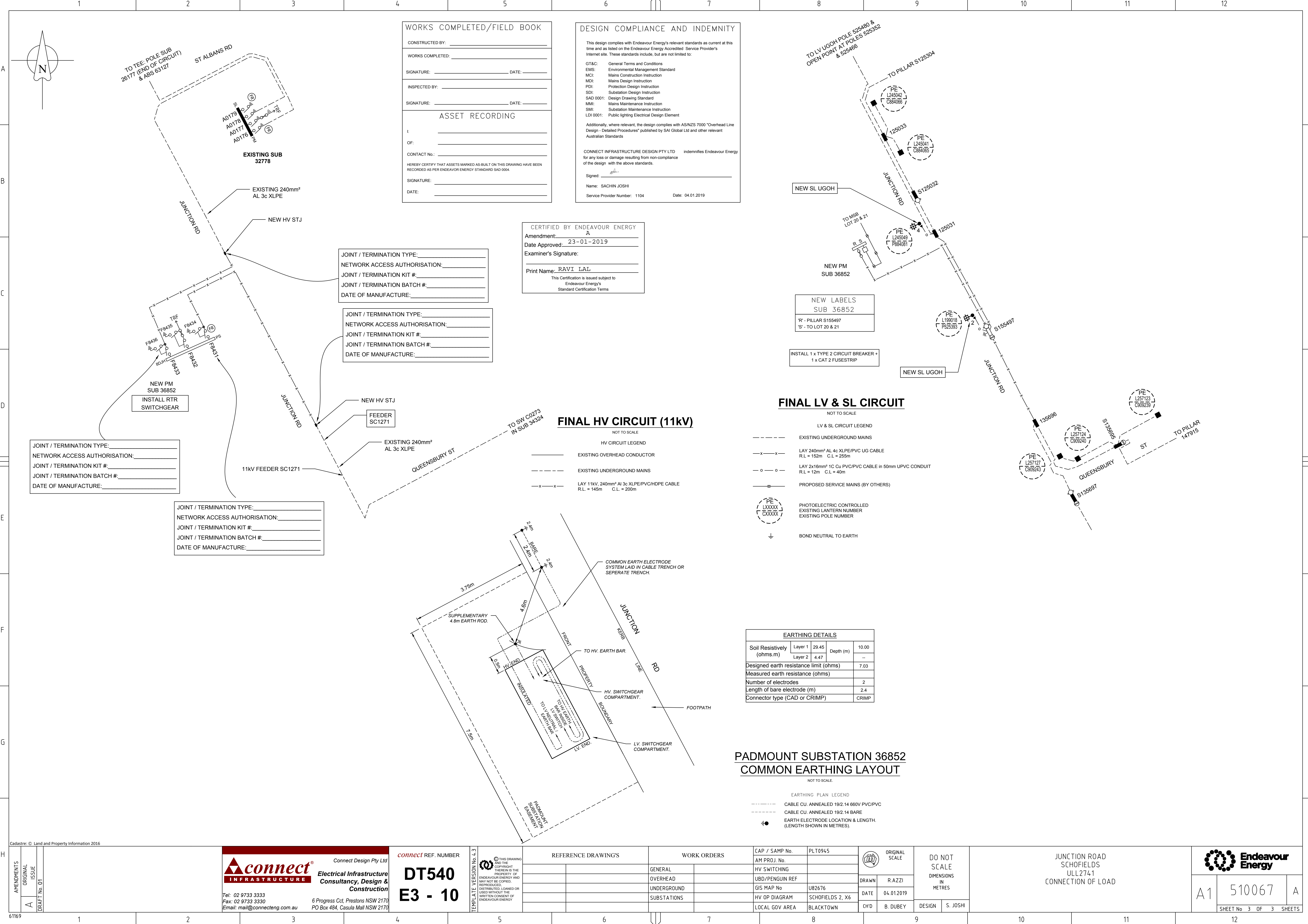
Signed: \_\_\_\_\_

Name: SACHIN JOSHI

Service Provider Number: 1104

Date: 04.01.2019





WORKS COMPLETED/FIELD BOOK

CONSTRUCTED BY: \_\_\_\_\_

WORKS COMPLETED: \_\_\_\_\_

SIGNATURE: \_\_\_\_\_ DATE: \_\_\_\_\_

INSPECTED BY: \_\_\_\_\_

SIGNATURE: \_\_\_\_\_ DATE: \_\_\_\_\_

ASSET RECORDING

I: \_\_\_\_\_

OF: \_\_\_\_\_

CONTACT No.: \_\_\_\_\_

HEREBY CERTIFY THAT ASSETS MARKED AS BUILT ON THIS DRAWING HAVE BEEN RECORDED AS PER ENDEAVOUR ENERGY STANDARD SAD 0004.

SIGNATURE: \_\_\_\_\_

DATE: \_\_\_\_\_

DESIGN COMPLIANCE AND INDEMNITY

This design complies with Endeavour Energy's relevant standards as current at this time and as listed on the Endeavour Energy Accredited Service Provider's internet site. These standards include, but are not limited to:

GT&C: General Terms and Conditions  
EMS: Environmental Management Standard  
MCI: Mains Construction Instruction  
MDI: Mains Design Instruction  
PDI: Protection Design Instruction  
SDI: Substation Design Instruction  
SAD 0001: Design Drawing Standard  
MMI: Mains Maintenance Instruction  
SMI: Substation Maintenance Instruction  
LDI 0001: Public Lighting Electrical Design Element

Additionally, where relevant, the design complies with AS/NZS 7000 "Overhead Line Design - Detailed Procedures" published by SAI Global Ltd and other relevant Australian Standards.

CONNECT INFRASTRUCTURE DESIGN PTY LTD indemnifies Endeavour Energy for any loss or damage resulting from non-compliance of the design with the above standards.

Signed: \_\_\_\_\_

Name: SACHIN JOSHI

Service Provider Number: 1104 Date: 04.01.2019

CERTIFIED BY ENDEAVOUR ENERGY

Amendment: A

Date Approved: 23-01-2019

Examiner's Signature: \_\_\_\_\_

Print Name: RAVI LAL

This Certification is issued subject to Endeavour Energy's Standard Certification Terms

JOINT / TERMINATION TYPE: \_\_\_\_\_

NETWORK ACCESS AUTHORISATION: \_\_\_\_\_

JOINT / TERMINATION KIT #: \_\_\_\_\_

JOINT / TERMINATION BATCH #: \_\_\_\_\_

DATE OF MANUFACTURE: \_\_\_\_\_

JOINT / TERMINATION TYPE: \_\_\_\_\_

NETWORK ACCESS AUTHORISATION: \_\_\_\_\_

JOINT / TERMINATION KIT #: \_\_\_\_\_

JOINT / TERMINATION BATCH #: \_\_\_\_\_

DATE OF MANUFACTURE: \_\_\_\_\_

JOINT / TERMINATION TYPE: \_\_\_\_\_

NETWORK ACCESS AUTHORISATION: \_\_\_\_\_

JOINT / TERMINATION KIT #: \_\_\_\_\_

JOINT / TERMINATION BATCH #: \_\_\_\_\_

DATE OF MANUFACTURE: \_\_\_\_\_

JOINT / TERMINATION TYPE: \_\_\_\_\_

NETWORK ACCESS AUTHORISATION: \_\_\_\_\_

JOINT / TERMINATION KIT #: \_\_\_\_\_

JOINT / TERMINATION BATCH #: \_\_\_\_\_

DATE OF MANUFACTURE: \_\_\_\_\_

FINAL HV CIRCUIT (11kV)

NOT TO SCALE

HV CIRCUIT LEGEND

— EXISTING OVERHEAD CONDUCTOR

- - - EXISTING UNDERGROUND MAINS

- x - LAY 11kV, 240mm² Al 3c XLPE/PVC/HDPE CABLE  
R.L. = 145m C.L. = 200m

FINAL LV & SL CIRCUIT

NOT TO SCALE

LV & SL CIRCUIT LEGEND

— EXISTING UNDERGROUND MAINS

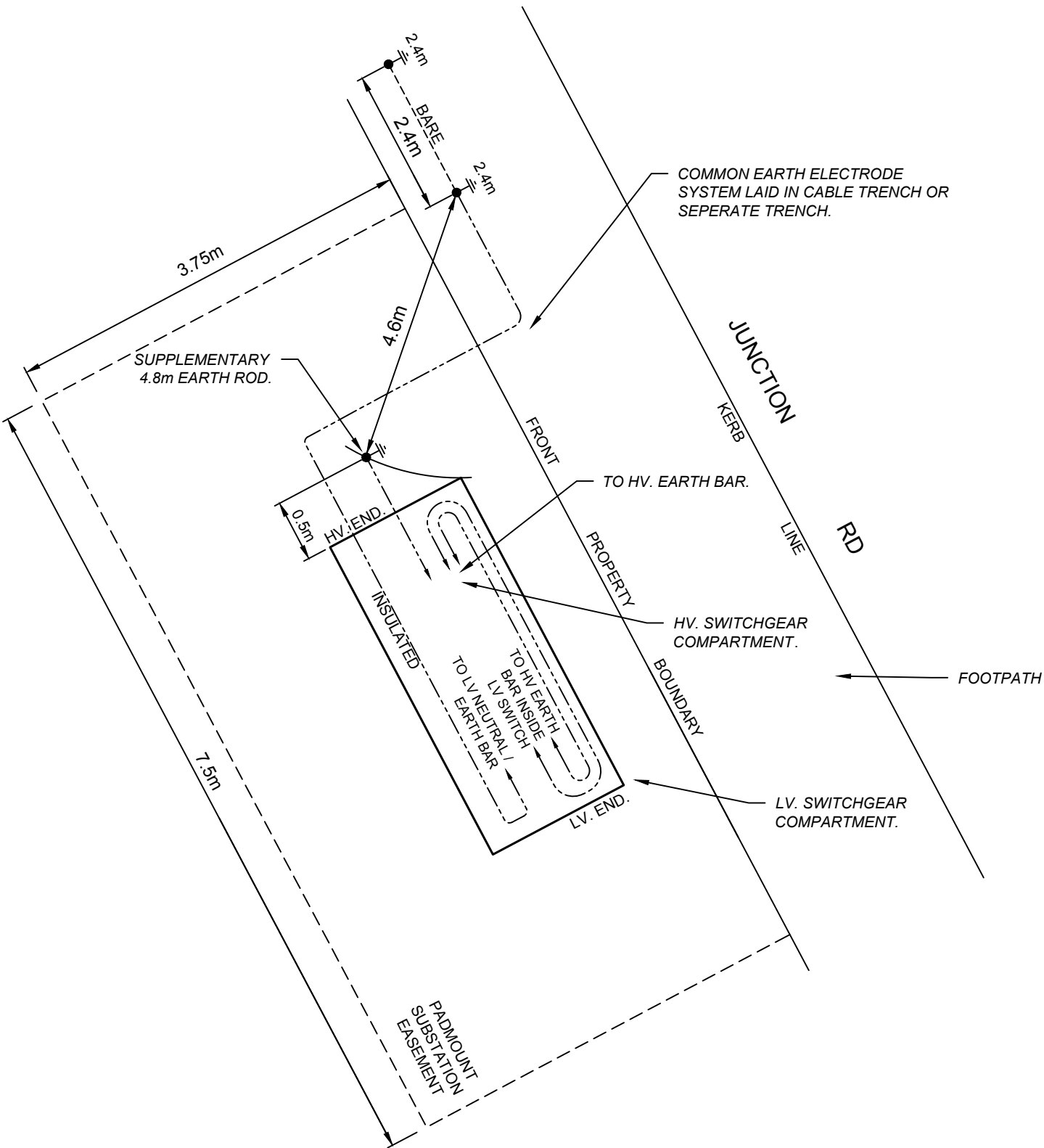
- x - LAY 240mm² AL 4c XLPE/PVC UG CABLE  
R.L. = 152m C.L. = 255m

- o - LAY 2x16mm² 1C Cu PVC/PVC CABLE in 50mm UPVC CONDUIT  
R.L. = 12m C.L. = 40m

— PROPOSED SERVICE MAINS (BY OTHERS)

PE LXXXX / CXXXX PHOTOELECTRIC CONTROLLED EXISTING LANTERN NUMBER EXISTING POLE NUMBER

⊥ BOND NEUTRAL TO EARTH



EARTHING DETAILS			
Soil Resistivity (ohms.m)	Layer 1	29.45	10.00
	Layer 2	4.47	--
Designed earth resistance limit (ohms)			7.03
Measured earth resistance (ohms)			
Number of electrodes			2
Length of bare electrode (m)			2.4
Connector type (CAD or CRIMP)			CRIMP

PADMOUNT SUBSTATION 36852  
COMMON EARTHING LAYOUT

NOT TO SCALE.

EARTHING PLAN LEGEND

- - - CABLE CU, ANNEALED 19/2.14 660V PVC/PVC

- - - CABLE CU, ANNEALED 19/2.14 BARE

⊕ EARTH ELECTRODE LOCATION & LENGTH. (LENGTH SHOWN IN METRES).