

# Schofields Public School upgrade

## Works notification | 18 June 2025

As part of the NSW Government's plan to rebuild essential services, a project is underway to upgrade Schofields Public School with the construction of a new, purpose-built three-storey building.

### Concrete pours from 23 June 2025

The next phase of construction is underway with concrete pours scheduled to begin from Monday 23 June and continue until late 2025, weather permitting. These concrete pours will form the ground floor slab and support the construction of the new three storey building at Schofields Public School.

During this period, there will be an increase in truck activity as concrete trucks enter and exit the site via Gate 10 on Station Street, to maintain an uninterrupted supply of concrete.

### Impacts to kiss and drop zone on Station Street

A section of the kiss and drop zone and footpath on Station Street will be temporarily closed during school drop-off and pick-up times due to the large amount of concrete required for the pours.

Traffic control will be in place to manage pedestrian and vehicle access around the temporarily closed areas, ensuring continued access along Station Street. Please refer to the map on the next page for location details.

The school will notify the community in advance of any closures or impacts related to each pour.

### What to expect

- Concrete pours must be completed without interruption.
- A section of the kiss and drop area and footpath on Station Street will be temporarily closed to allow for truck access.
- Parents are advised to use alternate kiss and drop areas on Junction Road and St Albans Road.
- Traffic control will be in place to assist vehicles and pedestrians in safely navigating along Station Street.
- Some noise and vibration may be experienced from equipment such as concrete pumps, concrete vibrators and truck movements.
- Other key construction activities will continue including the installation of formwork (building frames), and essential pipes and cables.

### Working hours

Concrete pours will take place during standard working hours on Monday to Saturdays between 7 am and 5 pm. No work will take place on Sundays or public holidays unless otherwise advised.

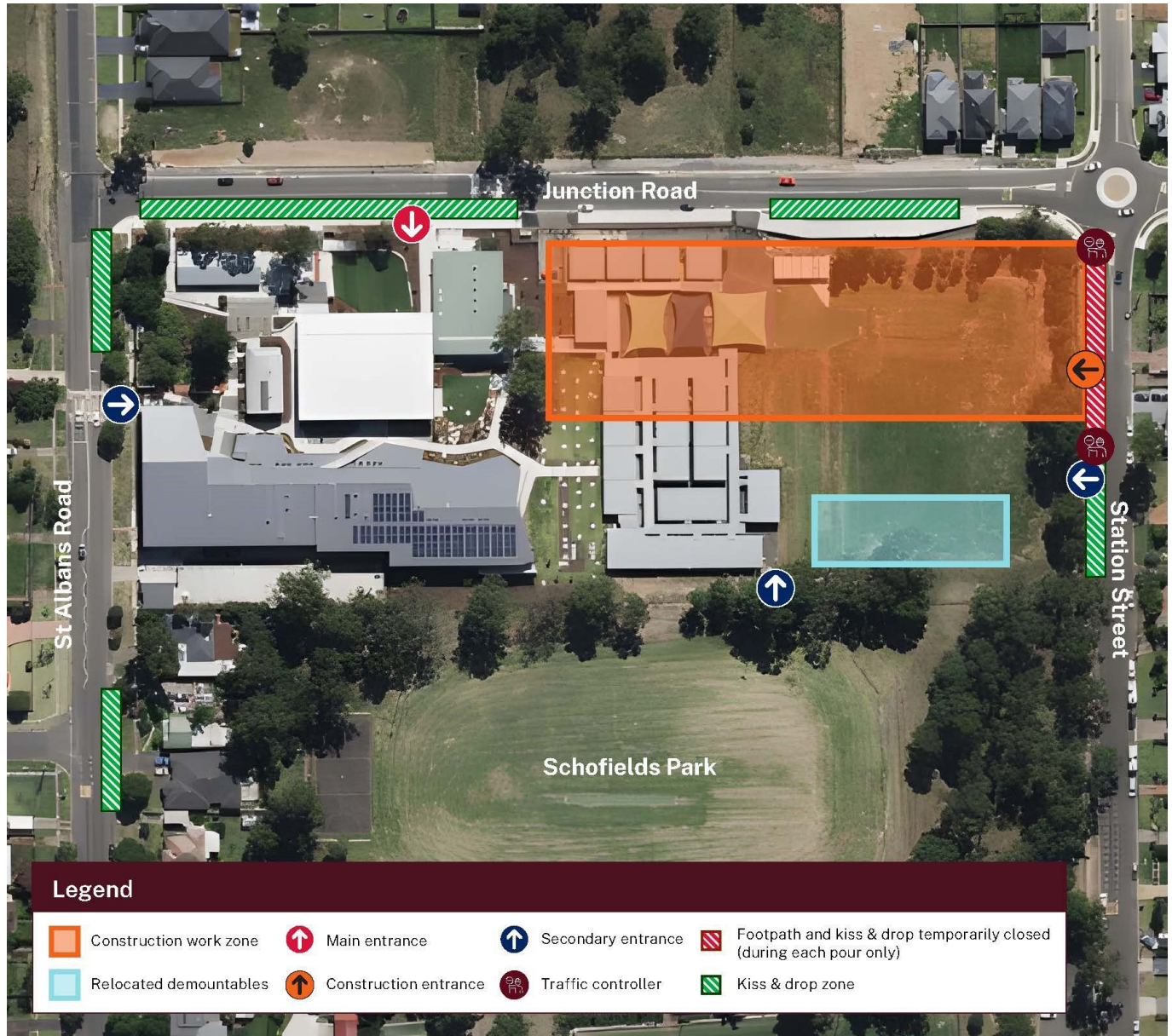


Email: [schoolinfrastructure@det.nsw.edu.au](mailto:schoolinfrastructure@det.nsw.edu.au)  
Phone: 1300 482 651  
[schoolinfrastructure.nsw.gov.au](http://schoolinfrastructure.nsw.gov.au)

## Managing construction impacts

School Infrastructure will work with the contractor to manage and reduce any potential construction impacts including noise, vibration, dust, and traffic changes. To learn more about how construction impacts are managed visit: [edu.nsw.link/ConstructionImpacts](https://edu.nsw.link/ConstructionImpacts).

## Site map



## More information



You can find more information about the project at [edu.nsw.link/SchofieldsPS](https://edu.nsw.link/SchofieldsPS) or by scanning the QR code.