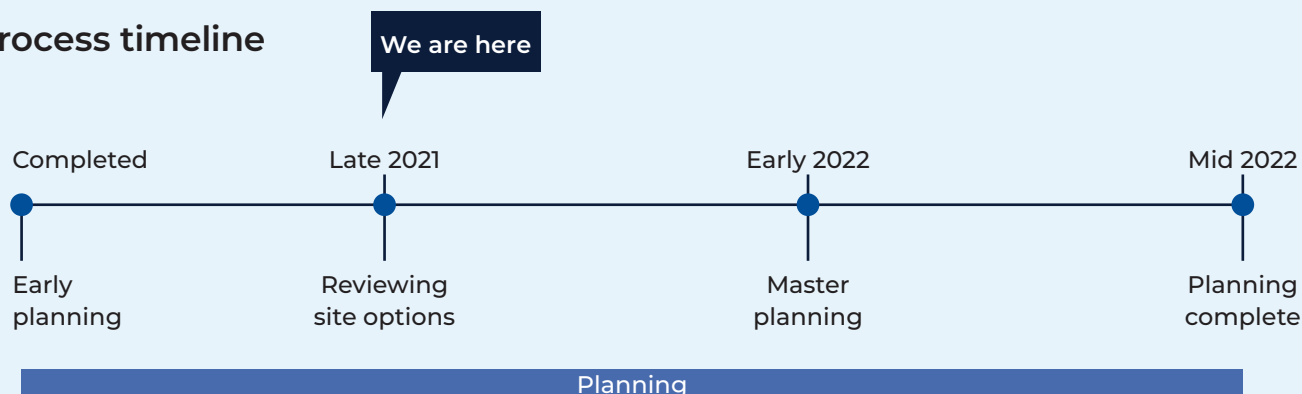


Planning for Rydalmere Education Campus

Planning update

October 2021

Process timeline



Investing in our schools

The NSW Government is investing \$7.9 billion over the next four years, continuing its program to deliver 215 new and upgraded schools to support communities across NSW. This is the largest investment in public education infrastructure in the history of NSW.

The NSW Department of Education is committed to delivering new and upgraded schools for communities across NSW. The delivery of these important projects is essential to the future learning needs of our students and supports growth in the local economy.

Delivering Rydalmere Education Campus

As part of the NSW 2021/22 Budget announcement the NSW Government announced funding for 44 new and upgraded school projects. This includes a new education campus in Rydalmere and will include education facilities to cater for students from Kindergarten to Year 12.

Progress summary

School Infrastructure NSW is currently undertaking planning work for the new primary and high school in Rydalmere. The planning process includes developing concept designs and reviewing suitable site options.

How can I get involved?

We are committed to working together with our school communities and other stakeholders to deliver the best possible learning facilities for students. Your feedback on this project is important to us. For more information, questions, or to make a comment please email us at schoolinfrastructure@det.nsw.edu.au.

How will we keep you informed on the new educational campus?

We will share information with our community on www.schoolinfrastructure.nsw.gov.au. Our information hotline and email address are also available to respond to community enquiries.

For more information contact:

School Infrastructure NSW
Email: schoolinfrastructure@det.nsw.edu.au
Phone: 1300 482 651
www.schoolinfrastructure.nsw.gov.au

Planning for Rydalmere Education Campus

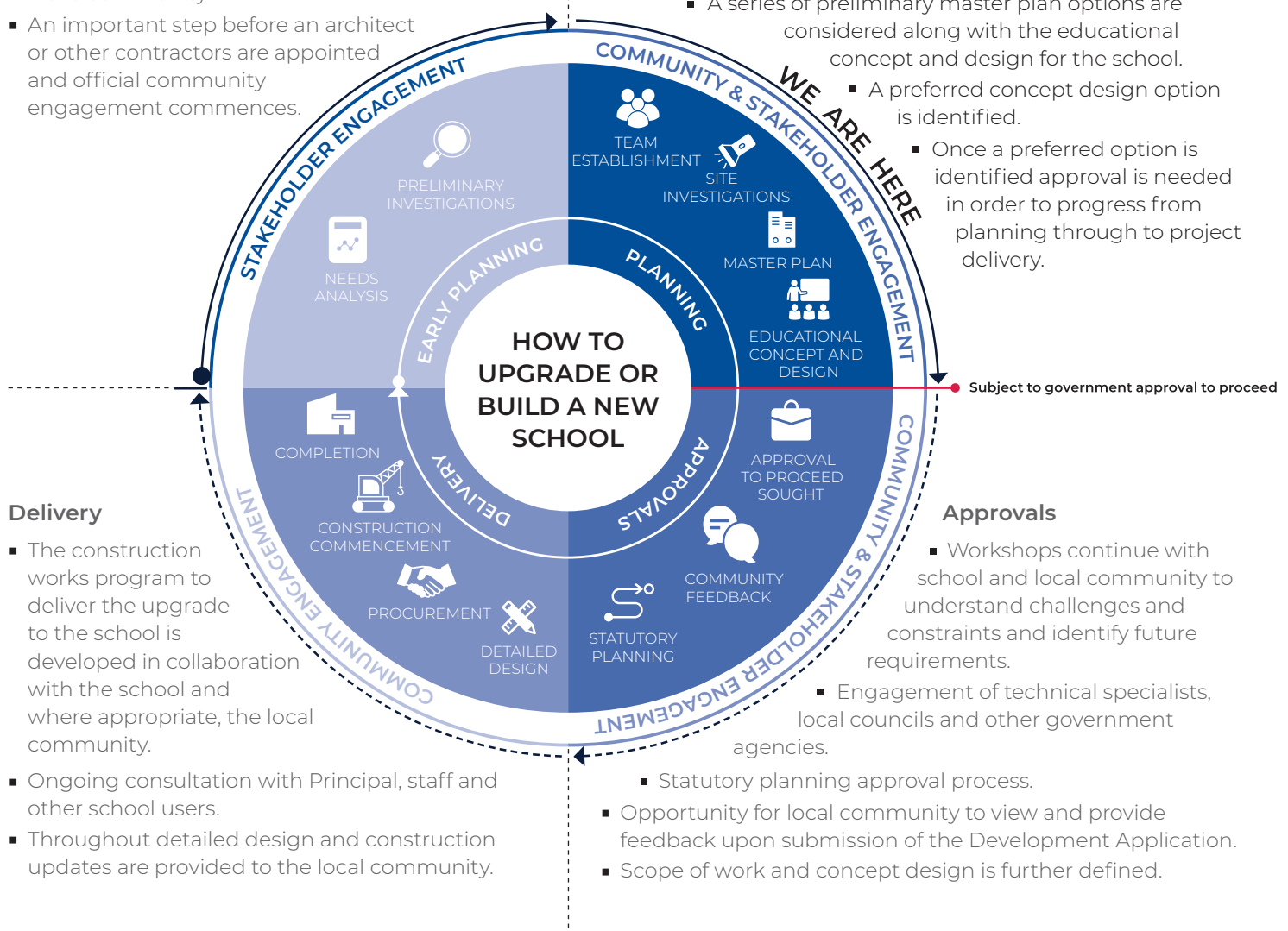
Funding has allocated for a new education campus in Rydalmere. The project will include new education facilities to cater for students from Kindergarten to Year 12. The information below takes you through the journey of building a new school.

Early planning

- Consideration and studies of demographic trends, education requirements, the condition of the existing school buildings, catchment boundaries, heritage requirements, transport links and partnership opportunities.
- Doing so means that we:
 - consider the needs of the local area now and into the future.
 - ensure the right school is designed for the community.
- An important step before an architect or other contractors are appointed and official community engagement commences.

Planning

- Consultants such as architects and project managers are appointed.
- Investigation and review of site and development of master plan options.
- Master planning considers options for the general size, shape and form of buildings for a specific school site.
- A Project Reference Group (PRG) is established.
- Operational, educational and service delivery factors are understood and considered by the PRG.
 - A series of preliminary master plan options are considered along with the educational concept and design for the school.
 - A preferred concept design option is identified.
 - Once a preferred option is identified approval is needed in order to progress from planning through to project delivery.



Delivery

- The construction works program to deliver the upgrade to the school is developed in collaboration with the school and where appropriate, the local community.
- Ongoing consultation with Principal, staff and other school users.
- Throughout detailed design and construction updates are provided to the local community.

Approvals

- Workshops continue with school and local community to understand challenges and constraints and identify future requirements.
- Engagement of technical specialists, local councils and other government agencies.
- Statutory planning approval process.
- Opportunity for local community to view and provide feedback upon submission of the Development Application.
- Scope of work and concept design is further defined.

For more information contact:

School Infrastructure NSW
 Email: schoolinfrastructure@det.nsw.edu.au
 Phone: 1300 482 651
www.schoolinfrastructure.nsw.gov.au