

Rouse Hill High School upgrade

A project is underway to deliver an upgrade to Rouse Hill High School to provide additional fit-for-purpose classrooms and amenities.

The upgrade will deliver a 2-storey building which will include:

- 

9 modern classrooms
- 

2 science labs
- 

2 science classrooms
- 

a flexible, collaborative learning area



Artist impression of new building at Rouse Hill High School (subject to change)



Rouse Hill High School upgrade

For more information
Phone: 1300 482 651
Email: schoolinfrastructure@det.nsw.edu.au
Website: schoolinfrastructure.nsw.gov.au



Location of the new building

A number of locations were reviewed and assessed for the new building. The site chosen was the best option as it:

- retains the ‘heart of the school’ - the highest usage outdoor area
- maintains access to the playing fields
- connects closely to existing buildings for ease of use
- reduces intrusion into the bushfire zone.



Rouse Hill High School upgrade

For more information
Phone: 1300 482 651
Email: schoolinfrastructure@det.nsw.edu.au
Website: schoolinfrastructure.nsw.gov.au



Enhancing learning at Rouse Hill High School



Artist impression of new building at Rouse Hill High School from the sports field (subject to change)



Artist impression of aerial view of new building at Rouse Hill High School (subject to change)

Rouse Hill High School upgrade

For more information

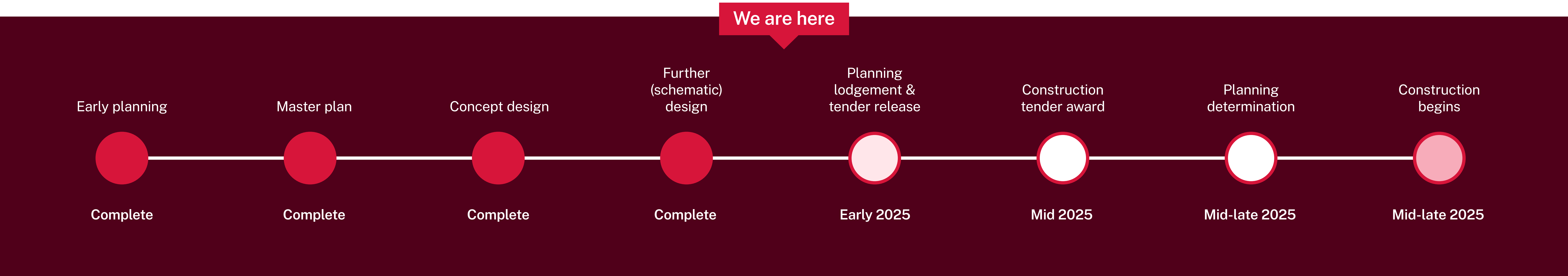
Phone: 1300 482 651

Email: schoolinfrastructure@det.nsw.edu.au

Website: schoolinfrastructure.nsw.gov.au

Delivering the upgrade for Rouse Hill High School - project timeline

The dates below may move depending on factors such as statutory planning timelines, inclement weather or other unforeseen issues.



The plans will be on exhibition soon. We will advise the community when this happens, and when they can be viewed on the NSW Planning Portal (planningportal.nsw.gov.au/part-5). Once the construction tender is awarded, the contractor will begin work on more detailed designs. Following planning approval we will advise the community of the construction start date.



Rouse Hill High School upgrade

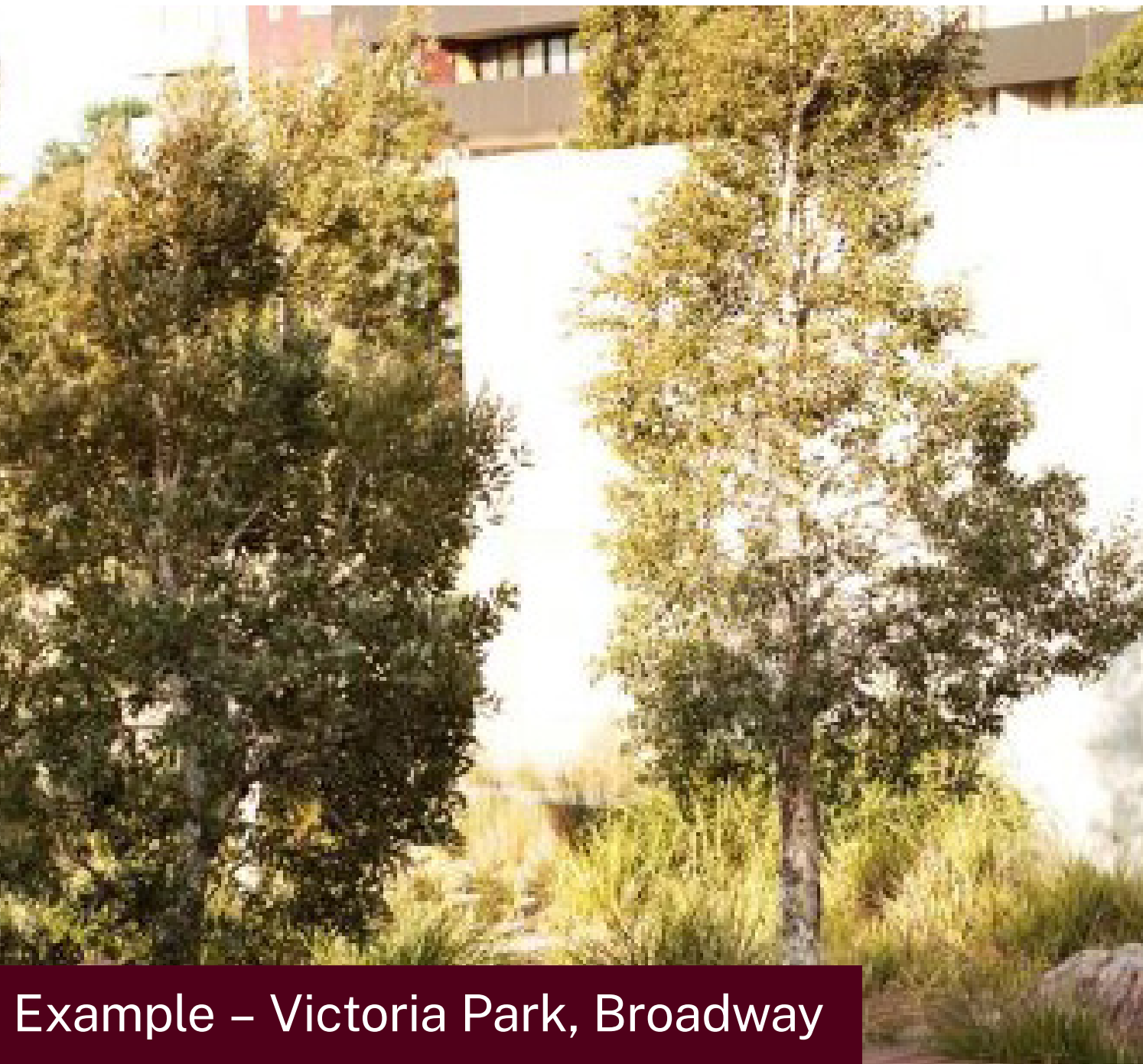
For more information
Phone: 1300 482 651
Email: schoolinfrastructure@det.nsw.edu.au
Website: schoolinfrastructure.nsw.gov.au



Connecting with Country

Our approach to connecting with Country integrates Aboriginal culture and environmental sustainability into the architectural design and landscaping of the upgrade. Key elements include:

Water sensitive design



Utilising natural drainage systems and landscape solutions that minimally impact the environment.

Screening devices



Perforated screening elements that incorporate patterns of Country.

Traditional maps and significant sites



Showcasing key Aboriginal landmarks with signs, concrete inlays, and pathways for education and engagement.

Native flora



Landscaping will incorporate local plants, and native flora and fauna are reflected in the design.

Collaboration with Elders



Engaging with Dharug Elders and knowledge holders to ensure cultural significance and authenticity in design.

Rouse Hill High School upgrade

For more information
Phone: 1300 482 651
Email: schoolinfrastructure@det.nsw.edu.au
Website: schoolinfrastructure.nsw.gov.au



How we upgrade schools

When designing new schools or school upgrades, we are guided by the NSW Education Facilities Standards and Guidelines (EFSG). The EFSG are based on years of educational research and engineering expertise.

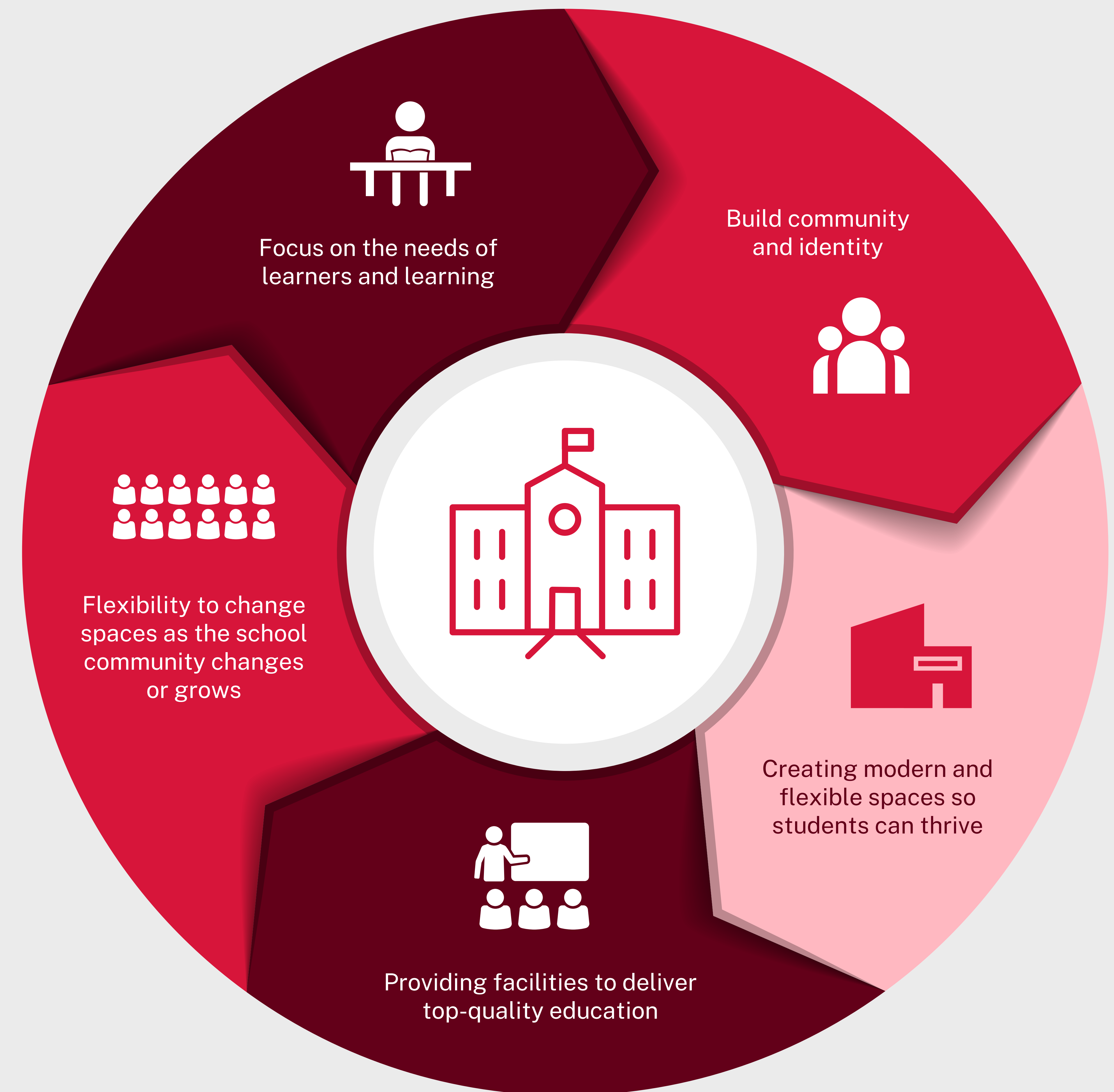
They have been developed to ensure we design and deliver the very best learning environments that support our teachers and meet the learning needs of all our students now and into the future.

These guidelines are essential in delivering more uniform, school designs and quality learning environments that:

- are safe, functional, and adaptable
- meet the learning needs of all our students
- support those with disabilities
- are fit for purpose to deliver the curriculum
- meet and comply with all NSW legal and policy requirements
- use resources sustainably to minimise their impact on the local environment
- deliver value for money and reduce long term maintenance costs.

Learn more

Take a look at some of the upgrades we have delivered and see how these varied spaces support teaching and learning. Visit edu.nsw.link/SchoolShowcase or scan the QR code



Rouse Hill High School upgrade

For more information

Phone: 1300 482 651

Email: schoolinfrastructure@det.nsw.edu.au

Website: schoolinfrastructure.nsw.gov.au

