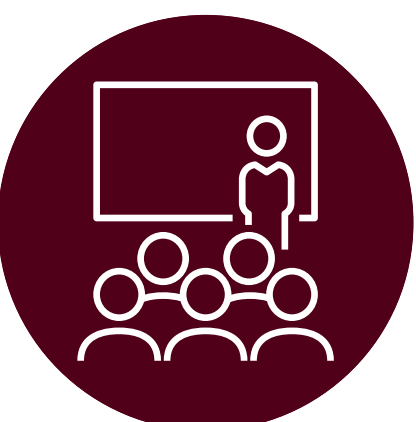

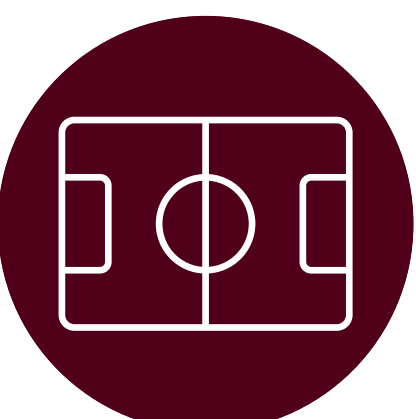


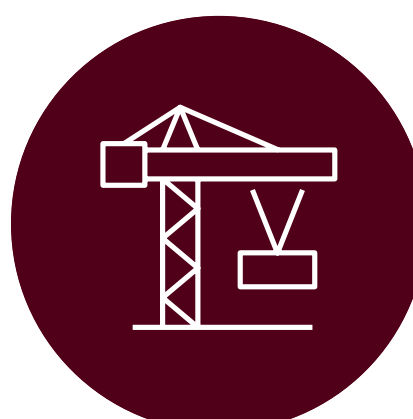
The Ponds High School upgrade


Planning is well underway to deliver an upgrade to The Ponds High School. The upgrade will deliver:


- 


49 new modern classrooms
- 

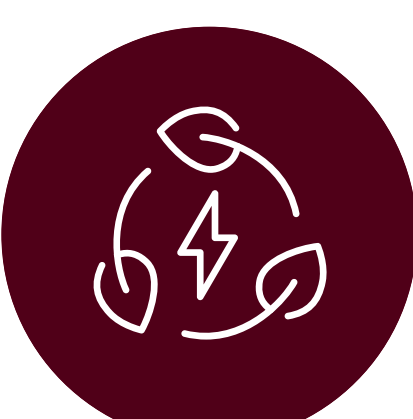
new cricket nets
- 

sports field upgrade
- 

removal of dozens of existing demountables
- 

extension of northern staff car park and upgrade to the south western staff car park providing over 50 additional spaces
- 

landscaping
- 

recreation area
- 

an electricity substation upgrade



Aerial view artist impression of The Ponds High School upgrade (indicative only)

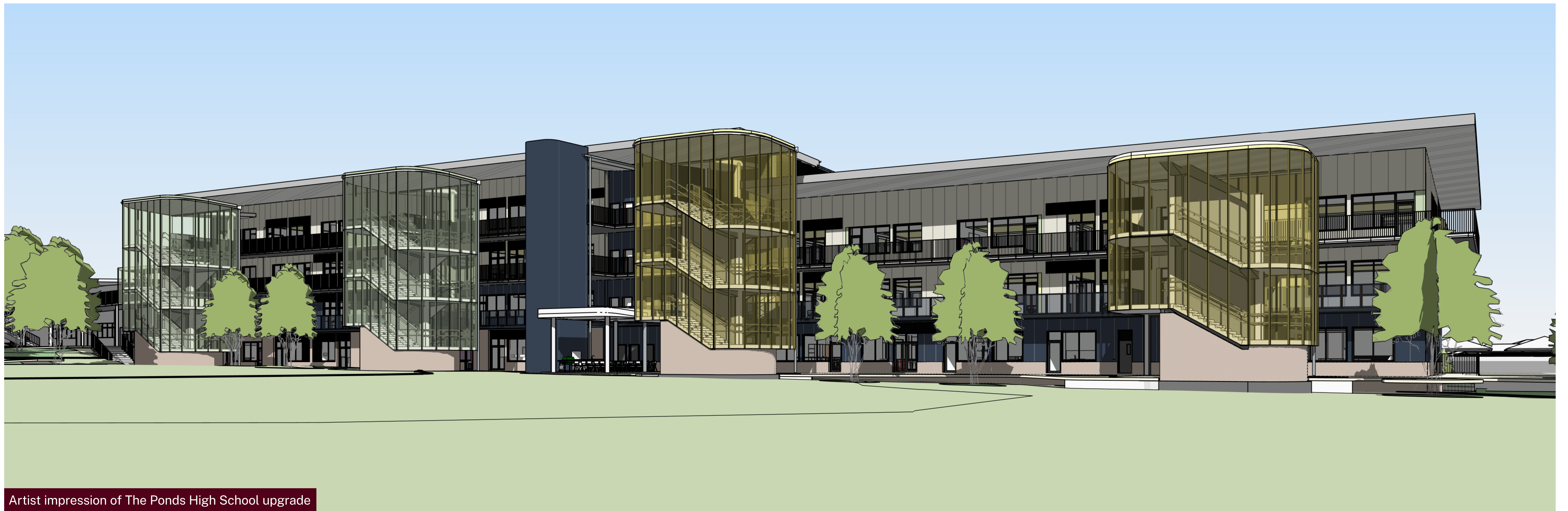


The Ponds High School

For more information
Phone: 1300 482 651
Email: schoolinfrastructure@det.nsw.edu.au
Website: schoolinfrastructure.nsw.gov.au



Artist impression (indicative only)



Artist impression of The Ponds High School upgrade

The Ponds High School

For more information

Phone: 1300 482 651

Email: schoolinfrastructure@det.nsw.edu.au

Website: schoolinfrastructure.nsw.gov.au



Artist impressions



Artist impression of The Ponds High School street view



Artist impression of the playing field at The Ponds High School upgrade

The Ponds High School

For more information

Phone: 1300 482 651

Email: schoolinfrastructure@det.nsw.edu.au

Website: schoolinfrastructure.nsw.gov.au

Proposed site plan

Staging construction

The construction of the project will be staged to minimise disruption to the school community and local neighbours.

The upgrade will be delivered in 4 stages:

Stage 1 – Build new classrooms and upgrade the south western car park

Stage 2 – Remove dozens of demountables from site

Stage 3 – Upgrade the sports field, upgrade and extend the north eastern car park and finish landscaping

Stage 4 – Complete all works in time for Day 1 Term 1 2028.



The Ponds High School

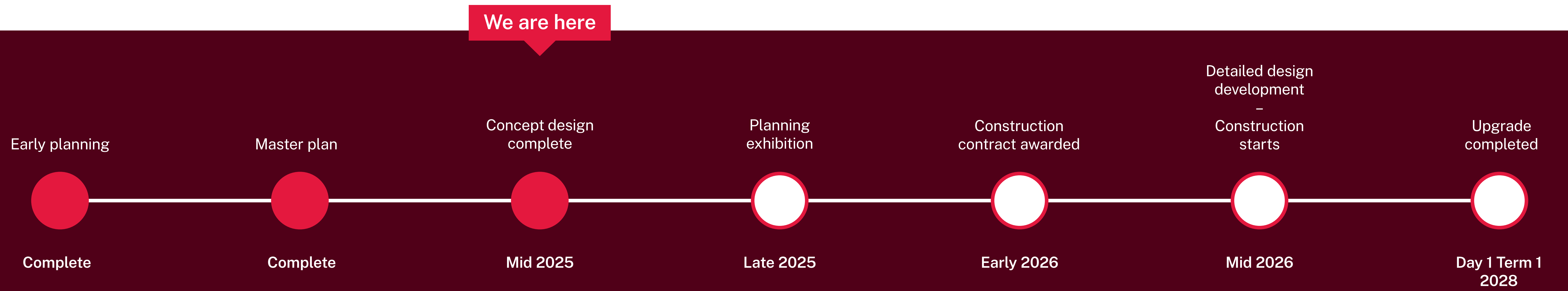
For more information

Phone: 1300 482 651

Email: schoolinfrastructure@det.nsw.edu.au

Website: schoolinfrastructure.nsw.gov.au

Timeline



The timeline above is indicative and subject to change.

Stay informed



More information about the project can be found at edu.nsw.link/RPSandTPHS or by scanning the QR code.

If you have any questions about this project, you can contact us during business hours on the contact details below.



The Ponds High School

For more information
Phone: 1300 482 651
Email: schoolinfrastructure@det.nsw.edu.au
Website: schoolinfrastructure.nsw.gov.au

