

# Richmond High School upgrade

Information pack | April 2021



Artist impression of the Richmond High School upgrade

The NSW Government is investing \$7 billion over the next four years, continuing its program to deliver more than 200 new and upgraded schools to support communities across NSW. This is the largest investment in public education infrastructure in the history of NSW.

The NSW Department of Education is committed to delivering new and upgraded schools for communities across NSW. The delivery of these important projects is essential to the future learning needs of our students and supports growth in the local economy.

We will deliver:



Refurbished facilities



New STEM building



The inclusion of a focus on agricultural education

## Overview

In late 2019, The NSW Department of Education announced it is implementing a new model for statewide agricultural education. As part of this model, there will be a new agricultural specialist stream (AgSTEM) and a new agricultural selective academic stream (AgSTEM) established at Richmond Agricultural College enrolled through Richmond High School.

To accommodate these educational streams, we are planning for an upgrade to Richmond High School. The project proposal includes upgrades to existing facilities and a new building to have a focus on science, technology, engineering and maths (STEM) and agricultural education.

The project has been through a planning phase, and we have received approval to start tenders for a design and construction contractor for the next stage of the project.

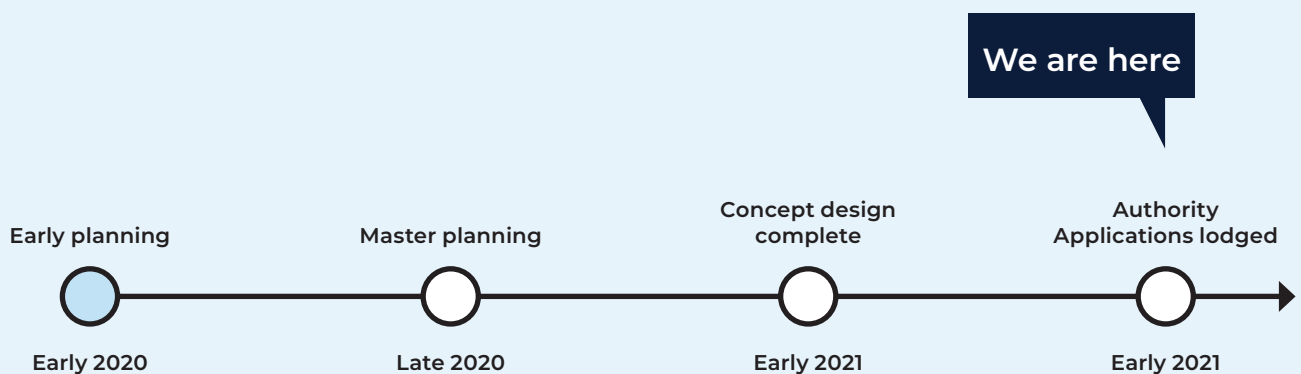
## Progress summary

A Project Reference Group (PRG) for the delivery phase will be established to include architects, planners and design professionals, and Department of Education, Richmond High School, and P&C leadership representatives.

## Next steps

We will start the detailed design and seek planning consent through the Department of Planning, Industry and Environment (DPIE) for the proposed new build facilities. We will also start tenders for a construction contract.

## Timeline



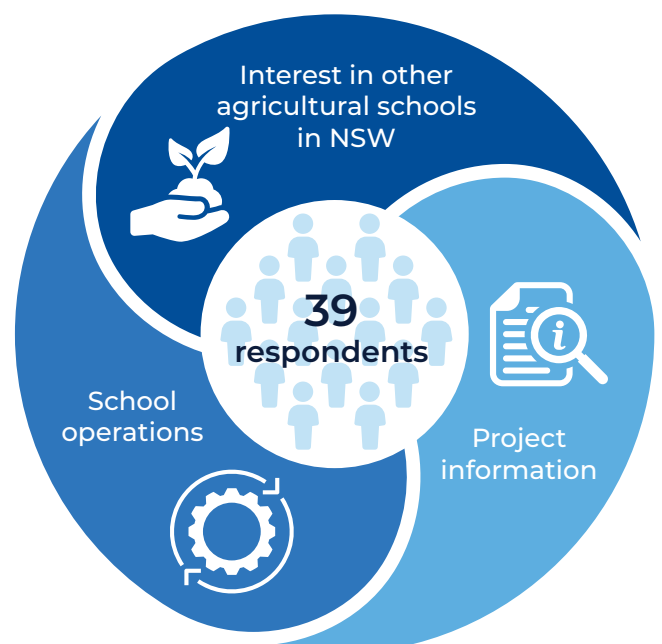
## Consultation

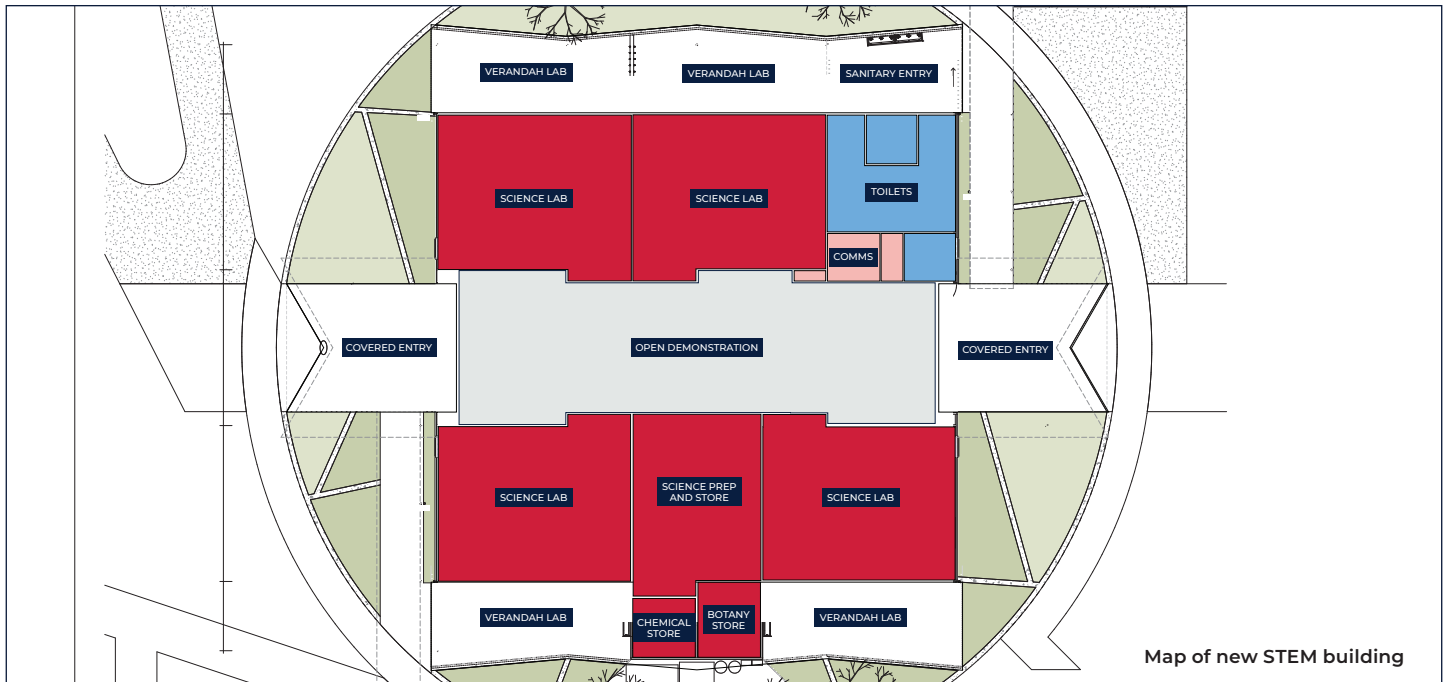
In February 2020, 39 community members attended a Community Information Session at Richmond High School. Between February and March 2020, there was also an opportunity for members of the community to provide feedback on the project proposal via a survey. We received 5 survey responses with feedback on the project proposal.

The most important themes raised from all the feedback we received were:

- Project information
- Interest in other agricultural schools in NSW
- School operations

You can stay up to date by visiting the School Infrastructure NSW website: [schoolinfrastructure.nsw.gov.au](https://schoolinfrastructure.nsw.gov.au)





Map of new STEM building

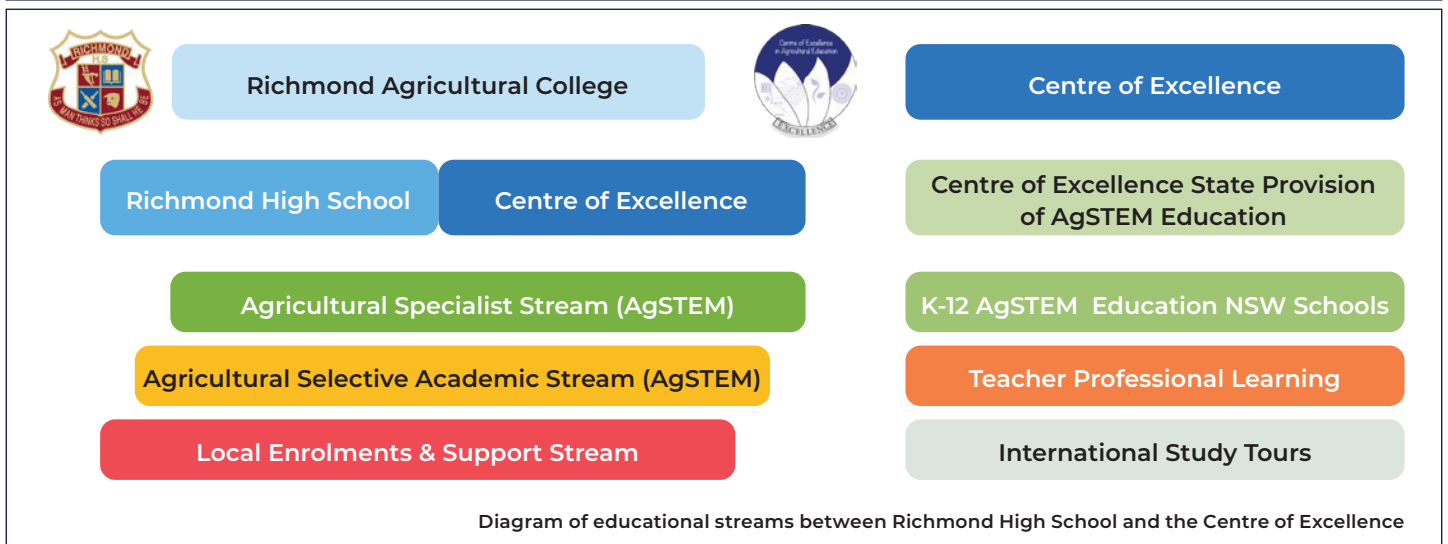


Diagram of educational streams between Richmond High School and the Centre of Excellence

## Frequently asked questions

### What consultation has been undertaken for the Richmond High School upgrade?

Consultation with school communities, local communities and other stakeholders interested in and impacted by the Richmond High School upgrade was undertaken in February and March 2020. The aim of this consultation was to ensure stakeholders and community members were informed about the project in the early planning stage and to gather their feedback to help inform the project.

### What does the upgrade mean for the curriculum at Richmond High School?

As a result of the upgrades and new building, Richmond High School will introduce both a new agricultural specialist stream (AgSTEM) and a new agricultural academic selective stream (AgSTEM). The co-delivery of agricultural education between Richmond High School and the Centre of Excellence in Agricultural Education will be known as Richmond Agricultural College.

### How can students enrol in the agricultural specialist stream (AgSTEM)?

Students from across New South Wales can apply for the new agricultural specialist stream (AgSTEM) based on a portfolio and interview which determines their interests and potential in agriculture. The first intake for the agricultural specialist stream (AgSTEM) will initially be a maximum of 30 places in Year 7 in 2021. Students in the agricultural specialist stream (AgSTEM) will study both on the Richmond High School and Centre of Excellence for Agricultural Education campus, co-located at Western Sydney University's Hawkesbury Campus. Students gain access to this stream through the High Performing Students Unit. More information regarding enrolment can be found here:

<https://education.nsw.gov.au/public-schools/selective-high-schools-and-opportunity-classes>

For more information on how to enrol, please contact:

#### Richmond High School

**E:** [Richmond-h.school@det.nsw.edu.au](mailto:Richmond-h.school@det.nsw.edu.au)

**W:** <https://richmond-h.schools.nsw.gov.au>





Example of new STEM facilities

## Frequently asked questions continued

### How can students enrol in the agricultural academic selective stream (AgSTEM)?

Students from across New South Wales will be able to apply for the new agricultural academic selective stream (AgSTEM) through the Department of Education's Selective Schools placement process. The first intake for the agricultural academic selective stream (AgSTEM) will initially be a maximum of 30 places in Year 7 in 2022. Please note students in the agricultural academic selective stream (AgSTEM) will study both on the Richmond High School and Centre of Excellence for Agricultural Education campus, co-located at Western Sydney University's Hawkesbury Campus. Further information regarding selective high schools can be found here: <https://education.nsw.gov.au/public-schools/selective-high-schools-and-opportunity-classes>

For more information on how to enrol, please contact:

#### Richmond High School

**E:** [Richmond-h.school@det.nsw.edu.au](mailto:Richmond-h.school@det.nsw.edu.au)

**W:** <https://richmond-h.schools.nsw.gov.au>

### How can I get involved?

We are committed to working together with our school communities and other stakeholders to deliver the best possible learning facilities for students. Your feedback on this project is important to us. For more information, questions or to make a comment please email us at [schoolinfrastructure@det.nsw.edu.au](mailto:schoolinfrastructure@det.nsw.edu.au) or phone 1300 482 651.

The health and safety of our students, staff and community is our priority. We are temporarily changing some of the ways we keep you informed about our project in your community to account for social distancing measures.

Until further notice we will share information with our communities online instead of in person. The SINSW website will continue to have up-to-date information about the project in your area. Our information hotline and email address will continue to operate as normal.

### What does this change mean for local students enrolled at Richmond High School?

Local students in the Richmond High School catchment will continue to enrol in the usual way. They will not be required to apply through specific entry pathways unless they wish to access the agricultural academic selective (AgSTEM) or agricultural specialist (AgSTEM) streams. Students will benefit from new facilities, access to the Centre of Excellence and a broader range of elective courses due to increased student numbers.

### What is involved in the agricultural education model?

The NSW Department of Education is implementing a new model for state-wide agricultural education. This includes investing in Richmond High School, Hurlstone Agricultural High School and delivering the new Centre of Excellence in agricultural education, co-located at the Western Sydney University's Hawkesbury Campus.

### Stay informed



#### Website

Stay up to date by visiting the School Infrastructure NSW website [schoolinfrastructure.nsw.gov.au](https://schoolinfrastructure.nsw.gov.au)



#### Email

Contact the Community Engagement team by emailing [schoolinfrastructure@det.nsw.edu.au](mailto:schoolinfrastructure@det.nsw.edu.au)



#### Phone

Contact us between 9:00am and 5:00pm, Monday to Friday on **1300 482 651**