

# Richmond High School

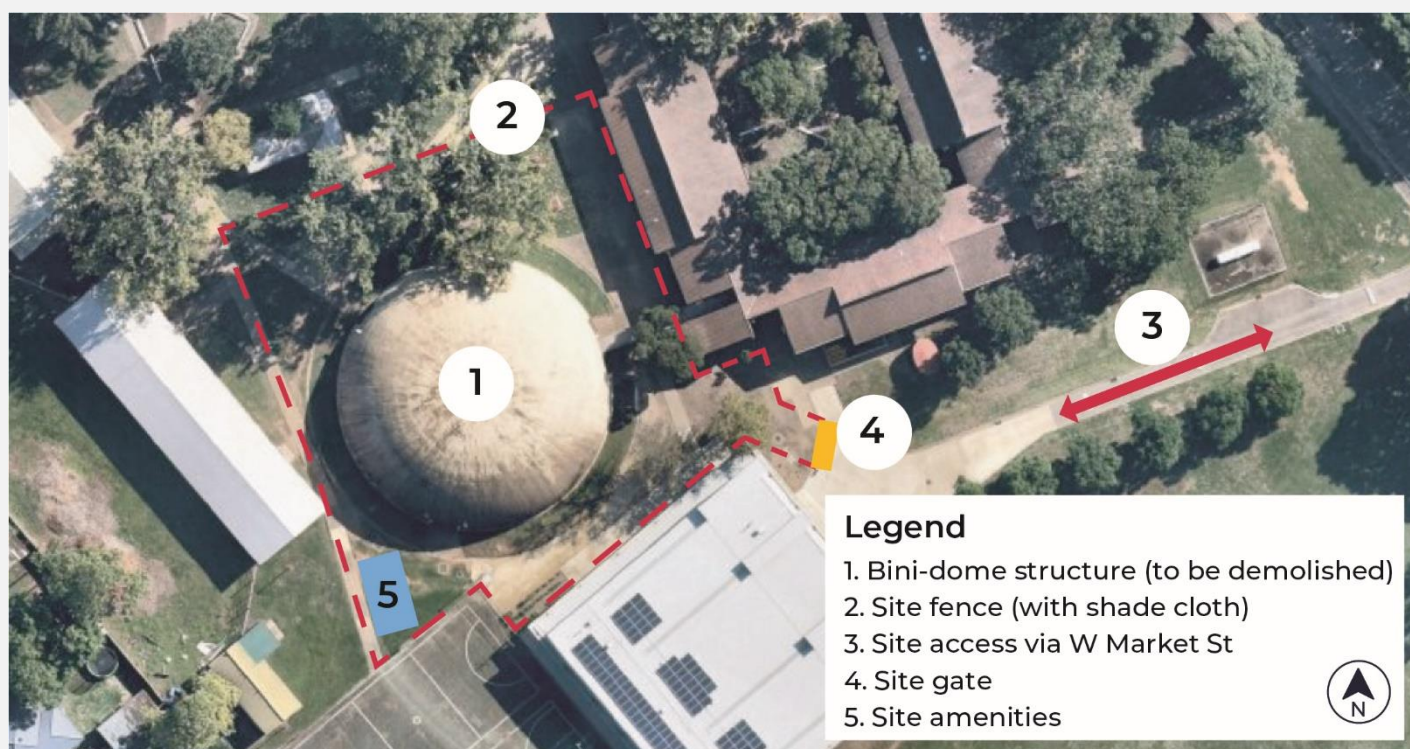
## Works notification

September 2020

### Bini-Dome removal

A new multipurpose sports hall facility was built at Richmond High School in 2019. This facility accommodates student needs previously provided by a Bini-Dome, currently located at Richmond High School.

Once the Bini-Dome has been removed, the site will be temporarily landscaped with turf. The site of the Bini-Dome is proposed as the location for a new Science, Technology, Engineering and Maths (STEM) facility. This new facility is proposed alongside other upgrades to Richmond High School which form part of the new state-wide model for agricultural education which was announced in December 2019, and also includes the Centre of Excellence in agricultural education at the Western Sydney University Hawkesbury campus.



## Hours of work – asbestos removal

During a routine inspection at Richmond High School, bonded asbestos was found in the internal structure of the Bini-Dome. Safety measures and monitoring have been put in place to ensure there is no risk to students, staff or the local community. Temporary fencing has been installed around the construction site to secure the area and ensure there is no public access.

The removal of the asbestos will take place outside of school hours on the following dates between 7:00am and 5:00pm:

- Saturday 12 September 2020
- Saturday 19 September 2020
- Saturday 26 September 2020

## Health and Safety

This area will be remediated in accordance with the Department of Education's Asbestos Management Plan and SafeWork NSW regulations. All work will be completed by licensed and accredited asbestos contractors, and monitored by occupational hygienists in strict accordance with all applicable legislation, regulations, policies and guidelines.

Testing will be completed to ensure the area has been fully remediated. The school will receive a clearance certificate before the area is open to students and staff following the bini-dome demolition.

The health, safety and well-being of our neighbours is our highest priority and we will continue to keep the community updated.

## Hours of work – Bini-Dome removal

Following the asbestos removal, the Bini-Dome will be demolished and landscaped with turf during the Spring school holidays between Monday 31 September 2020 and Friday 9 October 2020.

The Bini-Dome removal will take place during standard construction hours of 7:00am and 5:00pm Monday to Saturday. Under standard construction hours, there will be no work on Sundays or public holidays.

## Keeping you updated

Thank you for your understanding during this important work. We welcome any enquiries regarding work at Richmond High School.

The NSW Department of Education is committed to delivering new and upgraded schools for communities across New South Wales. The delivery of these important projects is essential to the future learning needs of our students and supports growth in the local economy.

### For more information contact:

School Infrastructure NSW

Email: [schoolinfrastructure@det.nsw.edu.au](mailto:schoolinfrastructure@det.nsw.edu.au)

Phone: 1300 482 651

[www.schoolinfrastructure.nsw.gov.au](http://www.schoolinfrastructure.nsw.gov.au)