

Taree Public Preschool Project update | July 2025

Image caption: Example of the play space of a new public preschool



100 new public preschools

As part of the plan to rebuild public education, the NSW Government is investing \$769 million to deliver 100 new public preschools, co-located with public primary schools in NSW, to boost access to public preschool across the state. This is the largest investment in public preschools in NSW history, helping more children access a preschool program before starting school.

Taree Public Preschool

Work is underway to deliver a new public preschool at Taree Public School. The proposed location of the preschool is on the ground floor of Building C, as shown on page 2.

The new public preschool will provide a safe and engaging environment for preschool children. It will feature specially designed rooms and a quality outdoor play area. The construction of the preschool is expected to be completed in time for Day 1 Term 1 2027 to accommodate up to 40 children per day, and will include:

- 2 preschool rooms
- outside play areas
- administration area, amenities, staff kitchen and storage.

Taree Public Preschool will offer a high-quality play-based educational program. It will be staffed by qualified educators and teachers in line with national regulations.

Progress summary

Early planning for Taree Public Preschool is now complete. We are pleased to confirm the completion of the master plan design, which provides the basic layout of facilities.

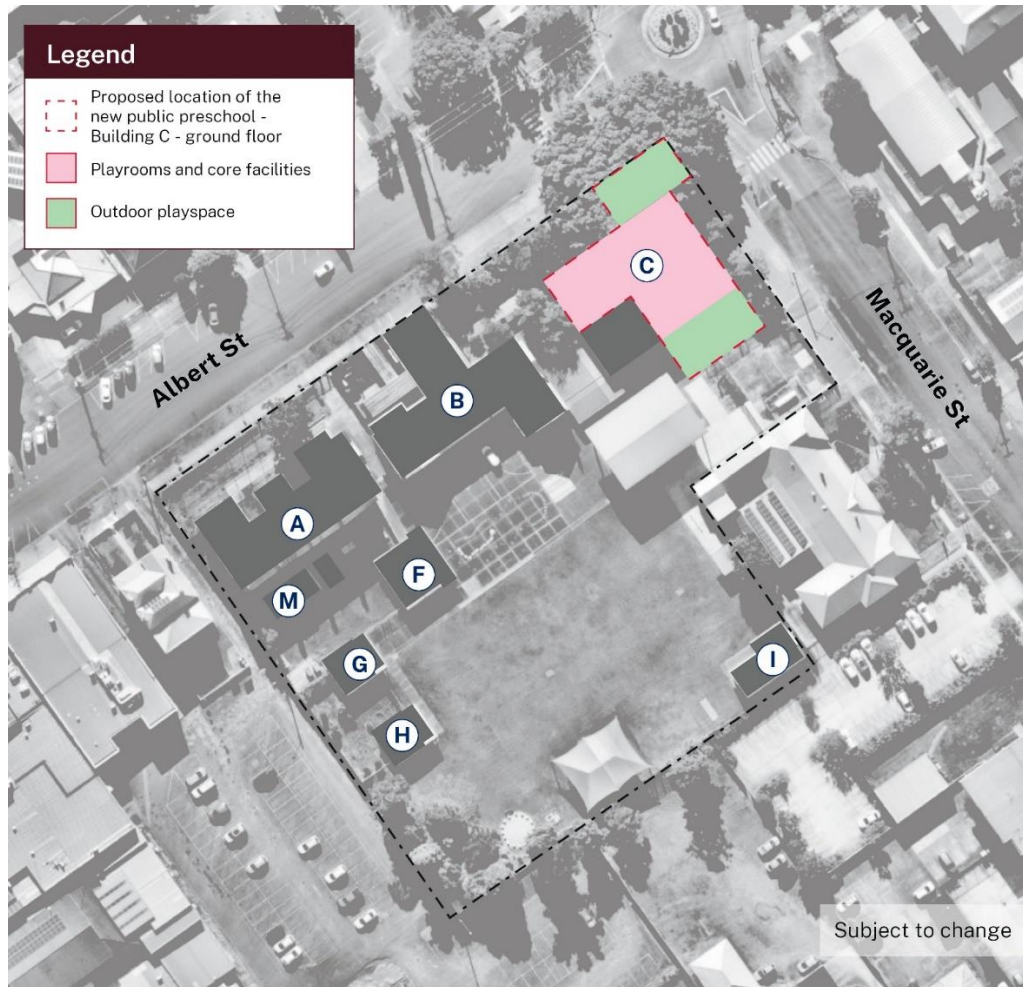
Next steps

- Releasing and awarding the construction contract.
- Approval of the planning application. Once the approval is received, we will update you on the project progress, including the construction and delivery timeline.



Email: schoolinfrastructure@det.nsw.edu.au
Phone: 1300 482 651
schoolinfrastructure.nsw.gov.au

Proposed location of Taree Public Preschool



The location is subject to change pending planning approvals.

Frequently asked questions

When will Taree Public Preschool open?

Construction for the preschool is anticipated to be completed in time for Day 1 Term 1 2027. The opening date of the preschool will be communicated after service approval is complete.

At what age can children attend Taree Public Preschool?

Children can enrol in preschool from the beginning of the school year if they turn 4 years of age on or before 31 July that year.

How can families enrol children at Taree Public Preschool?

Each school will communicate with their community when enrolment applications can be taken, which is expected to be approximately 6 months before the preschool opening date.

Keep in touch



You can find more information about the project at edu.nsw.link/TareePublicPreschool or by scanning the QR code.