

# Shalvey Public Preschool

## Project update | July 2025

Image caption: Example of the play space of a new public preschool.



## 100 new public preschools

As part of the plan to rebuild public education, the NSW Government is investing \$769 million to deliver 100 new public preschools, co-located with public primary schools in NSW, to boost access to public preschool across the state. This is the largest investment in public preschools in NSW history, helping more children access a preschool program before starting school.

## Shalvey Public Preschool

Work is underway to deliver a new public preschool at Shalvey Public School. The new public preschool will provide a safe and engaging environment for preschool children. It will feature specially designed rooms and a quality outdoor play area. The construction of the preschool is expected to be completed in time for Day 1 Term 1 2027 and will accommodate up to 40 children per day and will include:

- 2 preschool rooms
- an outside play area
- administration area, amenities, staff kitchen and storage.

Shalvey Public Preschool will offer a high-quality play-based educational program. It will be staffed by qualified educators and teachers in line with National Regulations.

## Progress summary

With the construction contractor on board, site assessments are underway, and the design of the new preschool is progressing.

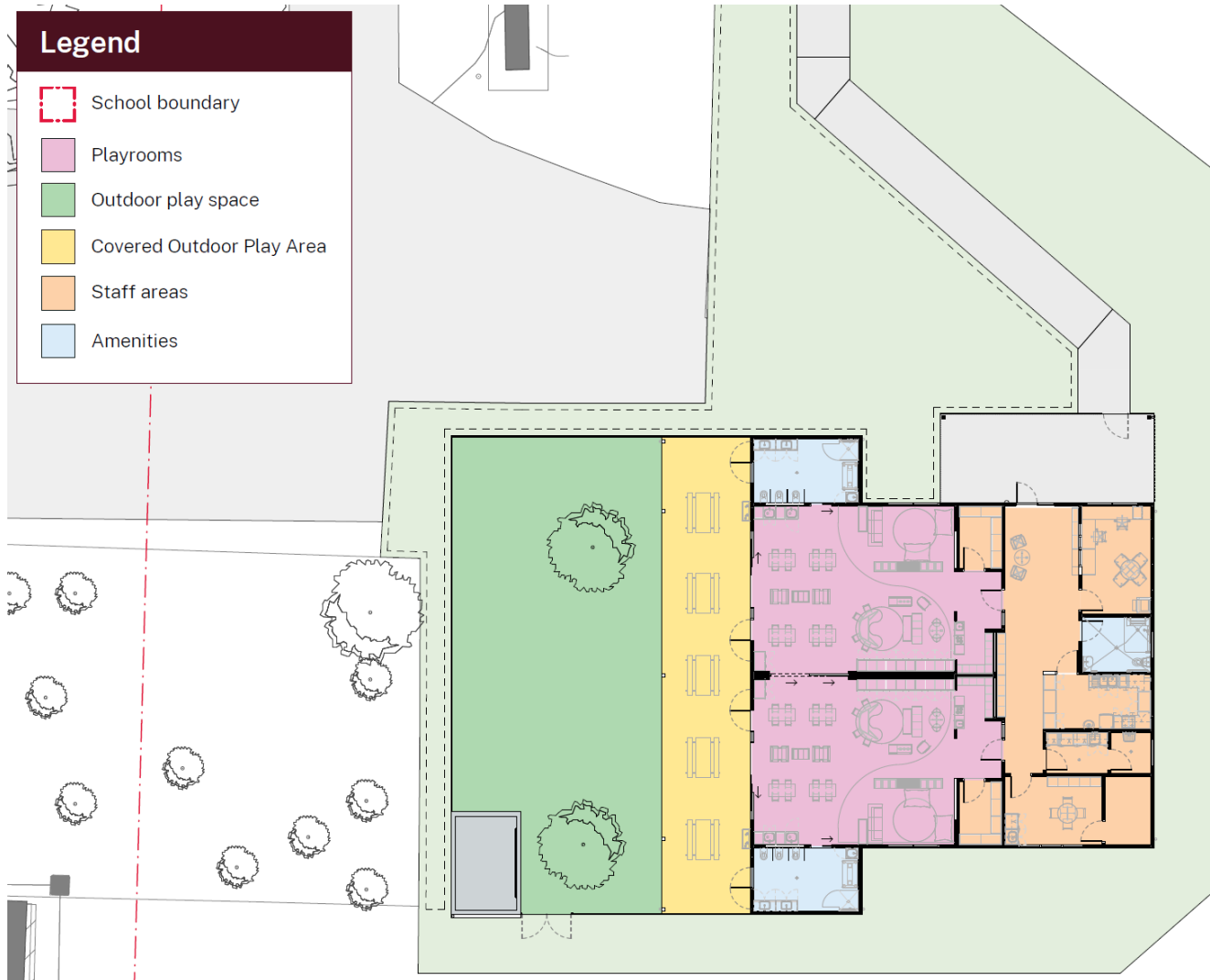
We are preparing documentation to apply for planning approval for the project through a complying development certificate (CDC) in late 2025. Complying development is a combined planning and construction approval that can be determined through assessment by a council or an accredited certifier. Once we have received the CDC, we will be able to advise the community of the construction start date.



Email: [schoolinfrastructure@det.nsw.edu.au](mailto:schoolinfrastructure@det.nsw.edu.au)  
Phone: 1300 482 651  
[schoolinfrastructure.nsw.gov.au](http://schoolinfrastructure.nsw.gov.au)

## Indicative layout

The plan below shows the proposed layout of the new preschool. There may be some changes as we progress the design to allow for construction requirements and statutory approvals.



## Next steps

- The contractor will finalise the design of the preschool
- Planning application will be finalised. Once the approval is received, we will update you on the project progress, including the final confirmed location, construction and delivery timeline.

## Keep in touch

You can find more information about the project by scanning the QR codes below:



Project webpage:  
[edu.nsw.link/ShalveyPublic  
 Preschool](https://edu.nsw.link/ShalveyPublicPreschool)



Sign up to receive ongoing  
 updates directly to your email:  
[edu.nsw.link/ShalveyPublicPre  
 school-SignUp](https://edu.nsw.link/ShalveyPublicPreschool-SignUp)