

# Moorland Public Preschool Project update | July 2025

Image caption: Example of the play space of a new public preschool



## 100 new public preschools

As part of the plan to rebuild public education, the NSW Government is investing \$769 million to deliver 100 new public preschools, co-located with public primary schools in NSW, to boost access to public preschool across the state. This is the largest investment in public preschools in NSW history, helping more children access a preschool program before starting school.

### Moorland Public Preschool

Work is underway to deliver a new public preschool at Moorland Public School. The proposed location of the preschool is behind Buildings A and B, as shown on page 2.

The new public preschool will provide a safe and engaging environment for preschool children. It will feature specially designed rooms and a quality outdoor play area. The construction of the preschool is expected to be completed in time for Day 1 Term 1 2027 to accommodate up to 20 children per day, and will include:

- one preschool room
- an outside play area
- administration area, amenities, staff kitchen and storage.

Moorland Public Preschool will offer a high-quality play-based educational program. It will be staffed by qualified educators and teachers in line with national regulations.

### Progress summary

Early planning for Moorland Public Preschool is now complete. We are pleased to confirm the completion of the master plan, which provides the basic layout of facilities.

Lipman Pty Ltd has been appointed as the construction contractor, and we will continue to work with the contractor to progress the design of the preschool for construction to begin, which will start once planning approval is received.

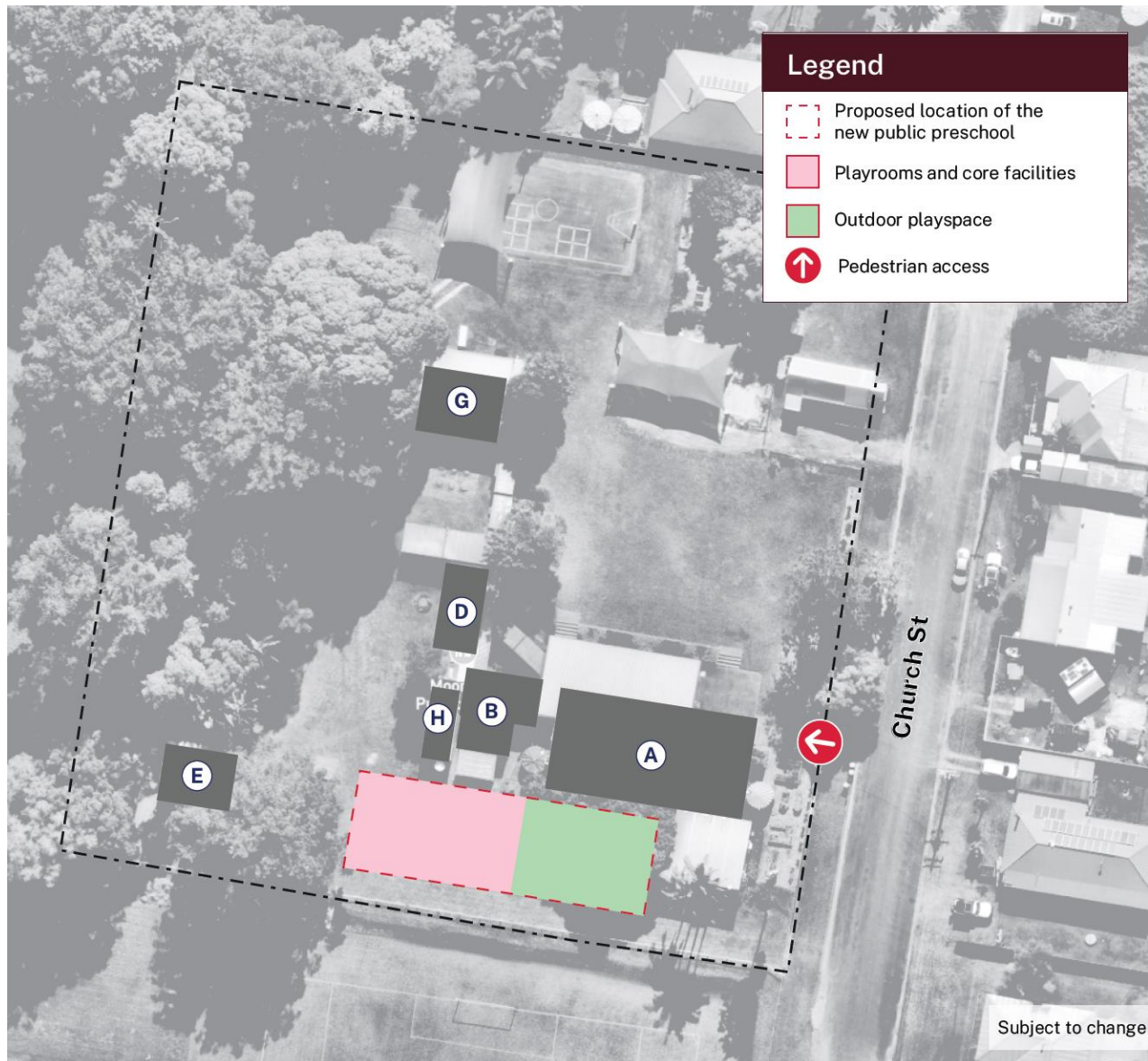
With the construction contractor on board, sites assessments are underway, and the design of the new preschool is progressing.



Email: [schoolinfrastructure@det.nsw.edu.au](mailto:schoolinfrastructure@det.nsw.edu.au)  
Phone: 1300 482 651  
[schoolinfrastructure.nsw.gov.au](http://schoolinfrastructure.nsw.gov.au)

We are preparing documentation to apply for planning approval for the project through a complying development certificate (CDC) in mid 2025. Complying development is a combined planning and construction approval that can be determined through assessment by a council or an accredited certifier. Once we have received the CDC, we will be able to advise the community of the construction start date.

## Proposed location of Moorland Public Preschool



The location is subject to change pending planning approvals.

## Next steps

- Continuing with the design process for the preschool. There may be some changes as we progress the design to allow for construction requirements and statutory approvals.
- Preparing and submitting the planning application. Once the approval is received, we will update you on the project progress, including the final location, construction and delivery timeline.

## Frequently asked questions

### When will Moorland Public Preschool open?

Construction for the preschool is anticipated to be completed in time for Day 1 Term 1 2027. The opening date of the preschool will be communicated after service approval is complete.

### At what age can children attend Moorland Public Preschool?

Children can enrol in preschool from the beginning of the school year if they turn 4 years of age on or before 31 July that year.

### How can families enrol children at Moorland Public Preschool?

Each school will communicate with their community when enrolment applications can be taken, which is expected to be approximately 6 months before the preschool opening date.

## Keep in touch



You can find more information about the project at [edu.nsw.link/MoorlandPublicPreschool](https://edu.nsw.link/MoorlandPublicPreschool) or by scanning the QR code.

If you would like to sign up to receive ongoing updates about this project directly to your email, please visit [edu.nsw.link/MoorlandPublicPreschool-SignUp](https://edu.nsw.link/MoorlandPublicPreschool-SignUp) or scan the QR code below.

