

# Melonba Public Preschool

## Project update | August 2025

Example of the interior of a new public preschool.



## 100 new public preschools

As part of the plan to rebuild public education, the NSW Government is investing \$769 million to deliver 100 new public preschools, co-located with public primary schools in NSW, to boost access to public preschool across the state. This is the largest investment in public preschools in NSW history, helping more children access a preschool program before starting school.

## Melonba Public Preschool

Work is underway for a new public preschool at Melonba Public School. The proposed location of the preschool will be situated at the temporary school site on Galah Street. The Department has secured the site from Blacktown City Council.

The new public preschool will provide a safe and engaging environment for preschool children. It will feature specially designed rooms and a quality outdoor play area. The construction of the preschool is expected to be completed in time for Day 1 Term 1 2027 to accommodate up to 60 children per day and will include:

- 3 preschool rooms
- an outside play area
- administration area, amenities, staff kitchen and storage.

## Progress summary

We are pleased to confirm that, as designs are being finalised, the tender has been released for construction contractors for Melonba Public Preschool.

To design preschools more efficiently, we have adopted a standardised design approach which has been developed in consultation with educational experts as well as engineering specialists. This approach also complies with the National Quality Framework (NQF).

The key design principles for our new public preschools are that they should be welcoming and safe, connected with community and the environment, and inclusive, quality play-based learning environments.



Email: [schoolinfrastructure@det.nsw.edu.au](mailto:schoolinfrastructure@det.nsw.edu.au)  
Phone: 1300 482 651  
[schoolinfrastructure.nsw.gov.au](http://schoolinfrastructure.nsw.gov.au)

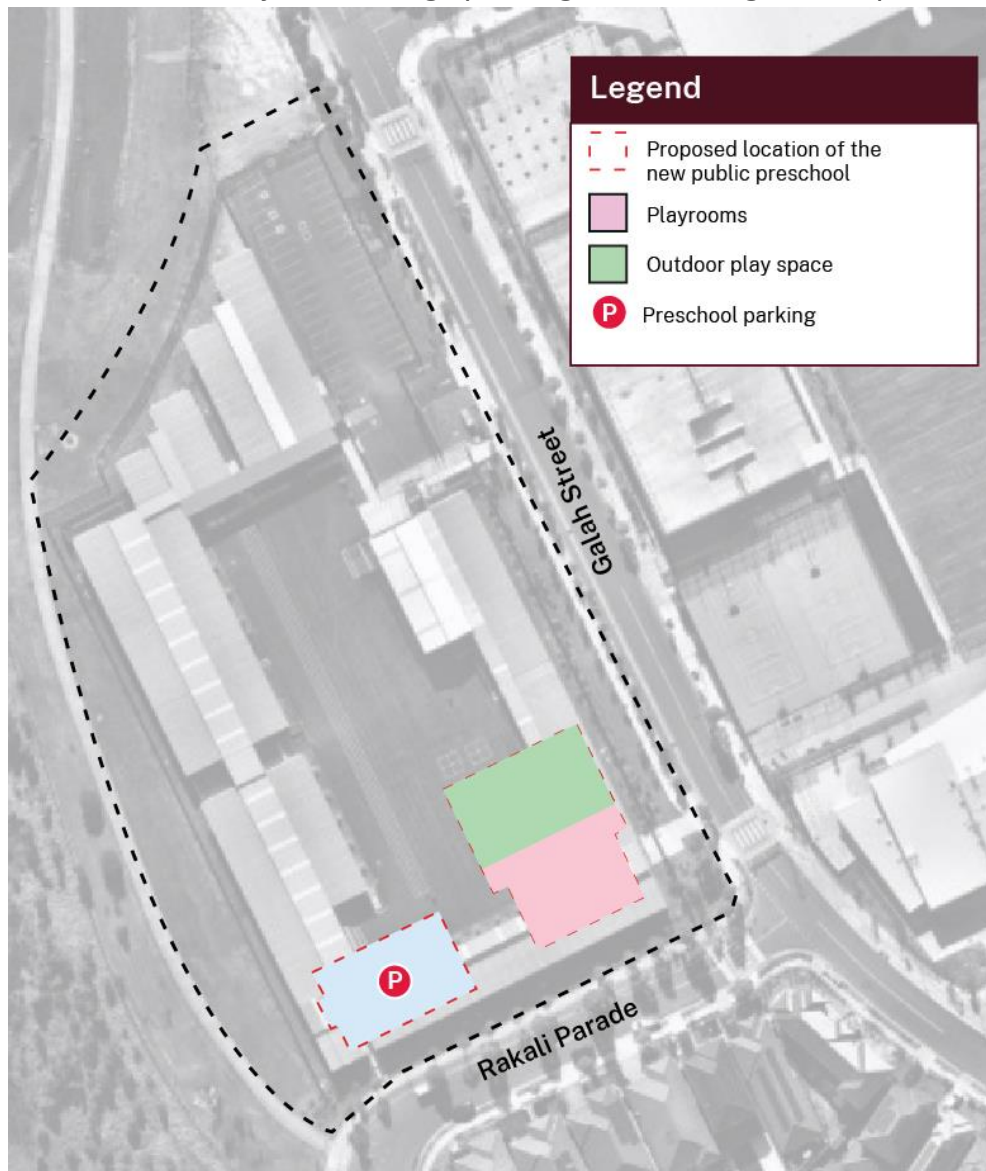
Each preschool is working within a governance framework, including a Project Reference Group (PRG) made up of school and department leadership representatives, and a school community representative.

## Next steps

- Continue with the design process for the preschool.
- Complete the tender process and award the construction contract.
- Prepare and submit the planning application. Once the approval is received, we will update you on the project's progress, including the final location, construction timeline, and delivery schedule.
- Undertaking early works to remove some of the demountable classrooms on the temporary school site during Term 3, to make way for the new public preschool.

## Proposed location of Melonba Public Preschool

The location is subject to change pending further design development and planning approvals.



## Frequently asked questions

### How were the sites chosen?

School sites have been selected based on child development and socioeconomic data, projected demand for preschool, an infrastructure analysis, and valuable insights gained through local feedback during the decision-making process. For more information, visit [edu.nsw.link/100NewPublicPreschools](https://edu.nsw.link/100NewPublicPreschools) or scan the QR code.



### When will Melonba Public Preschool open?

Construction of the preschool is anticipated to be completed in time for Day 1 Term 1 2027. The opening date of the preschool will be communicated after service approval is complete.

### How many children will Melonba Public Preschool accommodate?

Pending regulatory and building approvals, Melonba Public Preschool will accommodate up to 60 children per day.

### At what age can children attend Melonba Public Preschool?

Children can enrol in preschool from the beginning of the school year if they turn 4 years of age on or before 31 July that year.

### How can families enrol children at Melonba Public Preschool?

Melonba Public School will communicate with their community when enrolment applications can be taken, which is expected to be approximately 6 months before the preschool opening date. Information about the established enrolment process for the existing public preschools is available on the NSW Department of Education [website](https://www.det.nsw.edu.au).

### How can I stay updated?

You can find out more about the project by following the links or scanning the QR codes below.



Project webpage:  
[edu.nsw.link/MelonbaPublicPreschool](https://edu.nsw.link/MelonbaPublicPreschool)



Sign up to receive ongoing updates directly to your email.  
[edu.nsw.link/MelonbaPublicPreschool/sign up](https://edu.nsw.link/MelonbaPublicPreschool/sign up)