

# Leeton Public Preschool Project update | July 2025

Image caption: Example of the play space of a new public preschool.



## 100 new public preschools

As part of the plan to rebuild public education, the NSW Government is investing \$769 million to deliver 100 new public preschools, co-located with public primary schools in NSW, to boost access to public preschool across the state. This is the largest investment in public preschools in NSW history, helping more children access a preschool program before starting school.

## Leeton Public Preschool

Work is underway to deliver a new public preschool at Leeton Public School. The proposed location of the preschool is shown on page 2.

The new public preschool will provide a safe and engaging environment for preschool children. It will feature specially designed rooms and a quality outdoor play area. The construction of the preschool is expected to be completed in time for Day 1 Term 1 2027 and will accommodate up to 40 children per day and will include:

- 2 preschool rooms
- an outside play area
- administration area, amenities, staff kitchen and storage.

Leeton Public Preschool will offer a high-quality play-based educational program. It will be staffed by qualified educators and teachers in line with National Regulations.

## Progress summary

Early planning for Leeton Public Preschool is now complete. We are pleased to confirm the completion of the master plan, which provides the basic layout of facilities.

Zauner Construction Pty Limited has been appointed as the construction contractor, and we will continue to work with the contractor to progress the design of the preschool for construction to begin, which will start once planning approval is received.

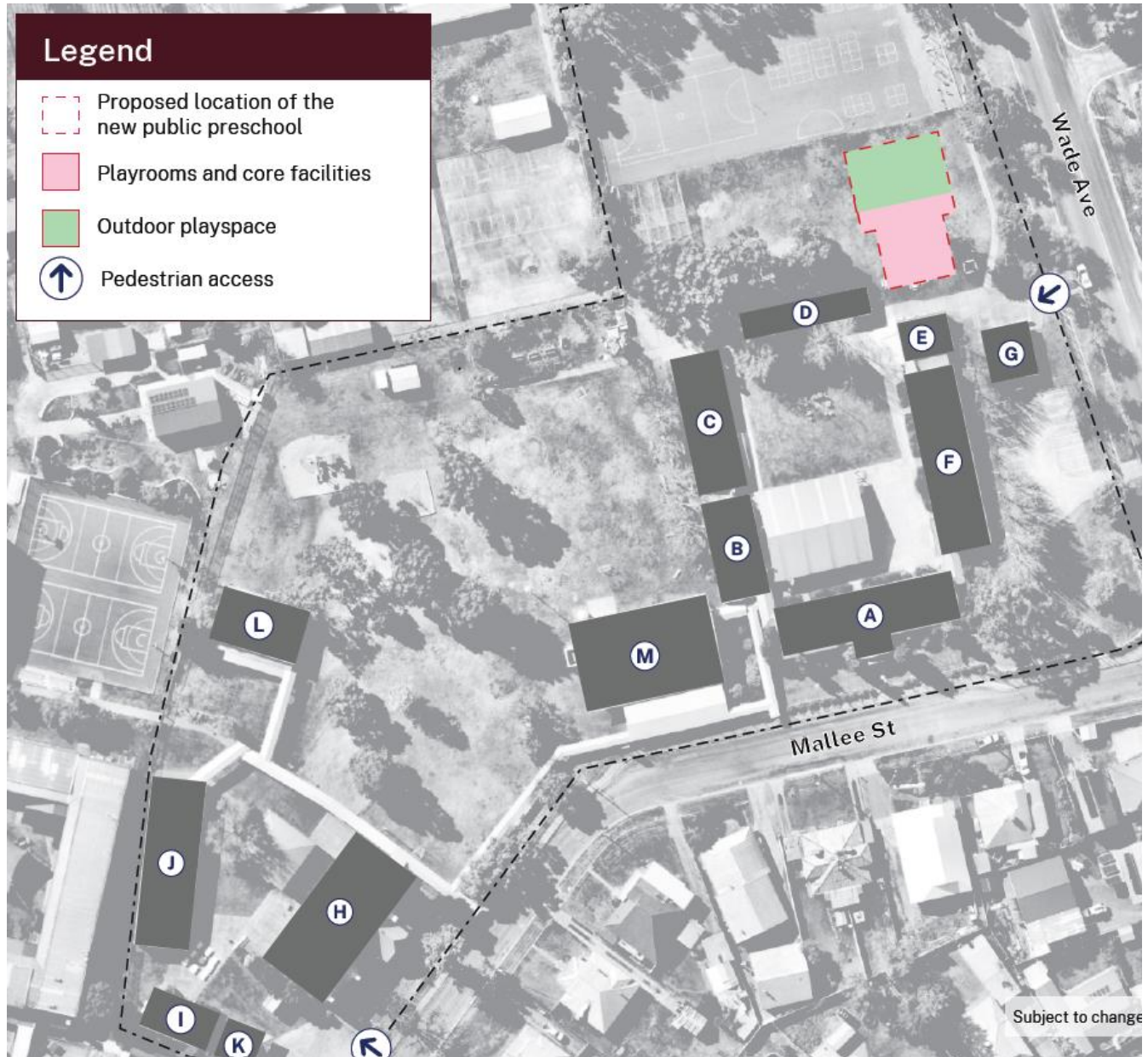
With the construction contractor on board, sites assessments are underway, and the design of the new preschool is progressing.



Email: [schoolinfrastructure@det.nsw.edu.au](mailto:schoolinfrastructure@det.nsw.edu.au)  
Phone: 1300 482 651  
[schoolinfrastructure.nsw.gov.au](http://schoolinfrastructure.nsw.gov.au)

We are preparing documentation for the planning application for Leeton Public Preschool. The planning application is anticipated to be a Review of Environmental Factors (REF) and allows the Department to self-assess the development of the preschool building. Once the REF has been assessed, we will be able to advise the community of the construction start date.

### Proposed location of Leeton Public Preschool



The location is subject to change pending planning approvals.

## Next steps

Continuing with the design process for the preschool. There may be some changes as we progress the design to allow for construction requirements and statutory approvals.

Preparing and submitting the planning application. Once the approval is received, we will update you on the project progress, including the final location, construction and delivery timeline.

## Frequently asked questions

### When will Leeton Public Preschool open?

Construction for preschool is anticipated to be completed in time for Day 1 Term 1 2027. The opening date of the preschool will be communicated after service approval is complete.

### At what age can children attend Leeton Public Preschool?

Children can enrol in preschool from the beginning of the school year if they turn 4 years of age on or before 31 July that year.

### How can families enrol children at Leeton Public Preschool?

Each school will communicate with their community when enrolment applications can be taken, which is expected to be approximately 6 months before the preschool opening date.

## Keep in touch

You can find out more about the project by following the links or scanning the QR codes below.



Project webpage:  
[edu.nsw.link/LeetonPublicPreschool](https://edu.nsw.link/LeetonPublicPreschool)



Sign up to receive ongoing updates directly to your email.  
[edu.nsw.link/LeetonPublicPreschool-SignUp](https://edu.nsw.link/LeetonPublicPreschool-SignUp)