

Governor Philip King Public Preschool

Project update | April 2025

Example of the interior of a new public preschool.



100 new public preschools

As part of the plan to rebuild public education, the NSW Government is investing \$769 million to deliver 100 new public preschools. This targeted investment includes building public preschools at new government primary schools in NSW, to boost access to public preschool across the state.

The 100 new public preschools will be co-located on public school sites, including new and redeveloped school sites, helping more children access a preschool program before starting school.

Governor Philip King Public Preschool

Work is underway for a new public preschool at Governor Philip King Public School. The proposed location of the preschool is shown on page 2.

The new public preschool will provide a safe and engaging environment for preschool children. It will feature specially designed rooms and a quality outdoor play area. The construction of the preschool is expected to be completed in time for Day 1 Term 1 2027 to accommodate up to 60 children per day and will include:

- 3 preschool rooms
- an outside play area
- administration area, amenities, staff kitchen and storage.

Progress summary

Early planning for Governor Philip King Public Preschool is now complete. We are pleased to confirm the completion of the master plan, which provides the basic layout of facilities.

Richard Crookes Constructions Pty Ltd has been appointed as the construction contractor, and we will continue to work with the contractor to progress the design of the preschool for construction to begin, which will start once planning approval is received.

Next steps

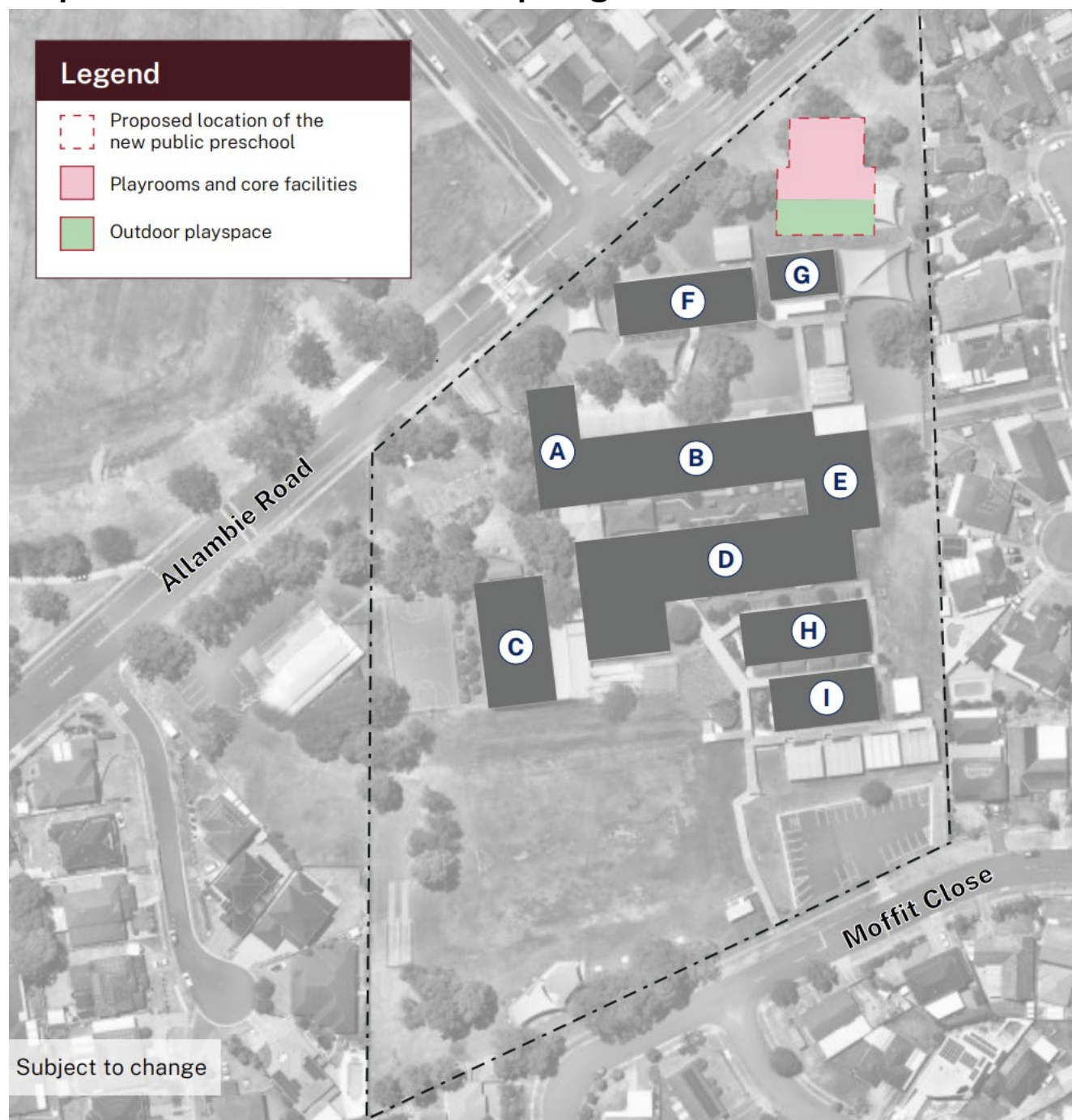
- Continuing with the design process for the preschool. There may be some changes as we progress the design to allow for construction requirements and statutory approvals.



Email: schoolinfrastructure@det.nsw.edu.au
Phone: 1300 482 651
schoolinfrastructure.nsw.gov.au

- Preparing and submitting the planning application. Once the approval is received, we will update you on the project progress, including the final location, construction and delivery timeline.

Proposed location of Governor Philip King Public Preschool



The location is subject to change pending planning approvals.

First new public preschool delivered

Gulyangarri Public Preschool is the first of 100 new public preschools that recently opened as part of the NSW Government's commitment to expand access to early childhood education.

[Take a 3D tour of Gulyangarri Public Preschool](#) to see the facilities delivered.

We have adopted a standardised design approach, which has been developed in consultation with educational experts as well as design and engineering specialists for the 100 public preschools program. This approach also complies with the National Quality Framework (NQF).

Frequently asked questions

How were the sites chosen?

School sites have been selected based on child development and socioeconomic data, projected demand for preschool, an infrastructure analysis, and valuable insights gained through local feedback during the decision-making process. For more information, visit edu.nsw.link/100NewPublicPreschools or scan the QR code.



When will Governor Philip King Public Preschool open?

Construction for preschool is anticipated to be completed in time for Day 1 Term 1 2027. The opening date of the preschool will be communicated after service approval is complete.

How many children will Governor Philip King Public Preschool accommodate?

Pending regulatory and building approvals, Governor Philip King Public Preschool will accommodate up to 60 children per day.

At what age can children attend Governor Philip King Public Preschool?

Children can enrol in preschool from the beginning of the school year if they turn 4 years of age on or before 31 July that year.

How can families enrol children at Governor Philip King Public Preschool?

Each school will communicate with their community when enrolment applications can be taken, which is expected to be approximately 6 months before the preschool opening date. Information about the established enrolment process for the existing public preschools is available on the [NSW Department of Education website](#).

How can I stay updated?



You can find more information about the project at <https://edu.nsw.link/GovernorPhilipKingPublicPreschool> or by scanning the QR code. If you would like to sign up to receive ongoing updates about this project directly to your email, please visit <https://edu.nsw.link/GovernorPhilipKingPublicPreschool-SignUp>