

# Chullora Public Preschool

## Project update | June 2025

Example of the play space of a new public preschool.



## 100 new public preschools

As part of the plan to rebuild public education, the NSW Government is investing \$769 million to deliver 100 new public preschools, co-located with public primary schools in NSW, to boost access to public preschool across the state. This is the largest investment in public preschools in NSW history, helping more children access a preschool program before starting school.

## Chullora Public Preschool

Work is underway to deliver a new public preschool at Chullora Public School. The new public preschool will provide a safe and engaging environment for preschool children. It will feature specially designed rooms and a quality outdoor play area. The construction of the preschool is expected to be completed in time for Day 1 Term 1 2027 and will accommodate up to 60 children per day and will include:

- 3 preschool rooms
- an outside play area
- administration area, amenities, staff kitchen and storage.

Chullora Public Preschool will offer a high-quality play-based educational program. It will be staffed by qualified educators and teachers in line with National Regulations.

## Progress summary

With the construction contractor on board, sites assessments are underway and the design of the new preschool is progressing.

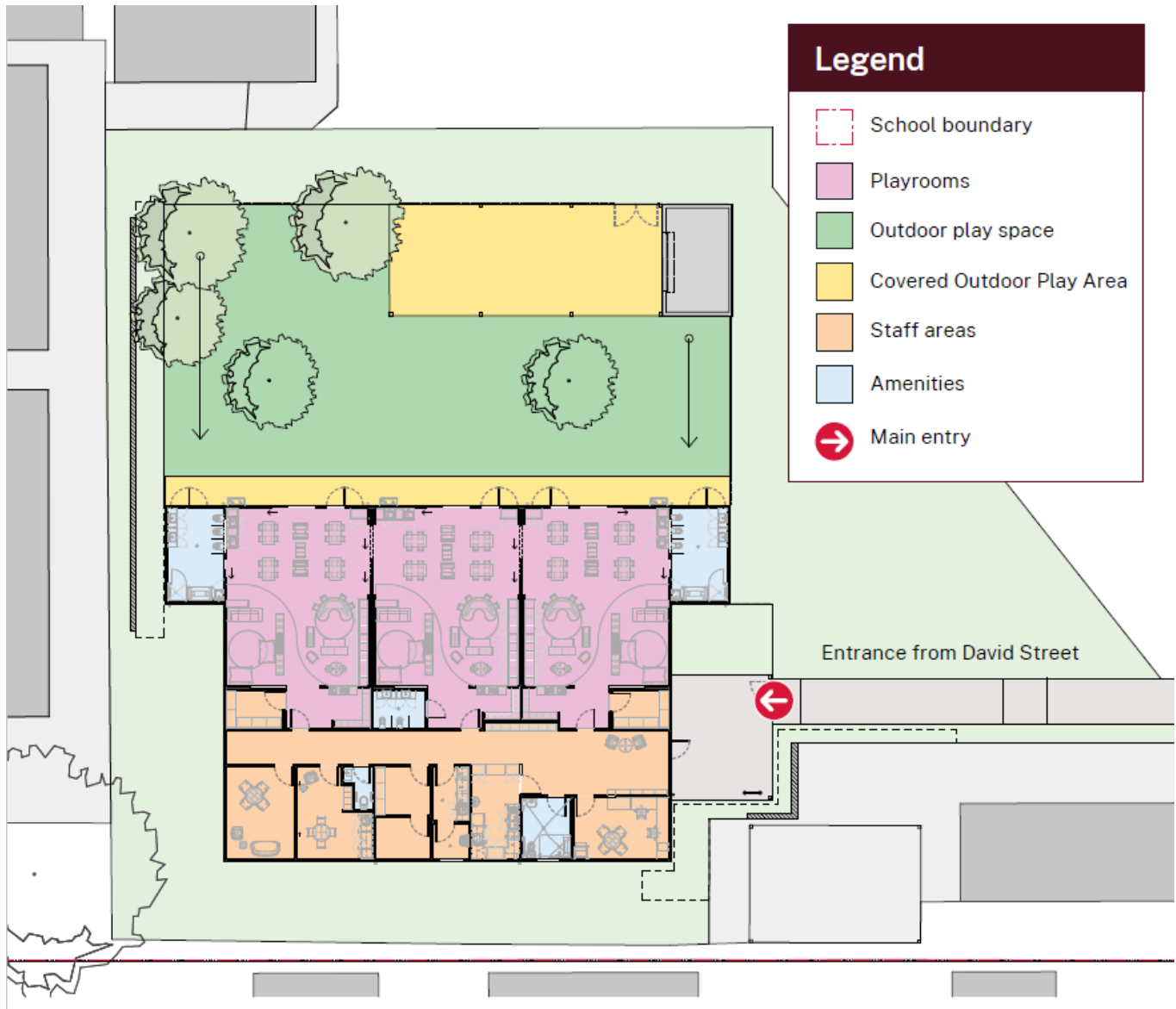
We are preparing documentation to apply for planning approval for the project through a complying development certificate (CDC) in the coming months. Complying development is a combined planning and construction approval that can be determined through assessment by a council or an accredited certifier. Once we have received the CDC, we will be able to advise the community of the construction start date.



Email: [schoolinfrastructure@det.nsw.edu.au](mailto:schoolinfrastructure@det.nsw.edu.au)  
Phone: 1300 482 651  
[schoolinfrastructure.nsw.gov.au](http://schoolinfrastructure.nsw.gov.au)

## Indicative site plan

The plan below shows the proposed layout of the new preschool. There may be some changes as we progress the design to allow for construction requirements and statutory approvals.



## Next steps

- The contractor will finalise the design of the preschool
- Planning application will be finalised. Once the approval is received, we will update you on the project progress, including the final confirmed location, construction and delivery timeline.

## Frequently asked questions

### When will construction start?

Construction of the new public preschool is expected to start later this year. Once the planning approval has been granted, we will be able to provide an additional update.

The community will be notified prior to works starting.

### When will Chullora Public Preschool open?

Construction for preschool is anticipated to be completed in time for Day 1 Term 1 2027. The opening date of the preschool will be shared after service approval is complete.

### How can I stay updated?



You can find more information about the project at [https://edu.nsw.link/Chullora\\_Preschool](https://edu.nsw.link/Chullora_Preschool) or by scanning the QR code.

If you would like to sign up to receive ongoing updates about this project directly to your email, please visit <https://edu.nsw.link/ChulloraPublicPreschool-SignUp>.