

New public preschool at Chullora Public School

Planning update | May 2024

The NSW Government's 2023-24 Budget is delivering a record \$8.8 billion for new and upgraded schools. This targeted investment in growing communities will ensure working families get access to a world class public education.

100 new public preschools

As part of the plan to rebuild essential services, the NSW Government is investing \$769 million to deliver 100 new public preschools, including building new public preschools at new government primary schools in NSW, to boost access to public preschool across the state.

New public preschool at Chullora Public School

The new public preschool at Chullora Public School will be among the [100 public preschools](#) to be built across NSW by 2027, pending building and regulatory approvals.

More details about the opening timeframes, size and operation of the public preschool at Chullora Public School, including how to enrol, will be shared as they become available.

How can I stay updated?

As the project progresses, we will share details with the community for feedback. A dedicated project page will be updated as the project progresses. You can view the project page by visiting https://edu.nsw.link/Chullora_Preschool or scan the QR code below.

If you would like to sign up to receive ongoing updates about this project directly to your email, please enter your details at the 'Get involved' tab on the project page.



How we build public preschools

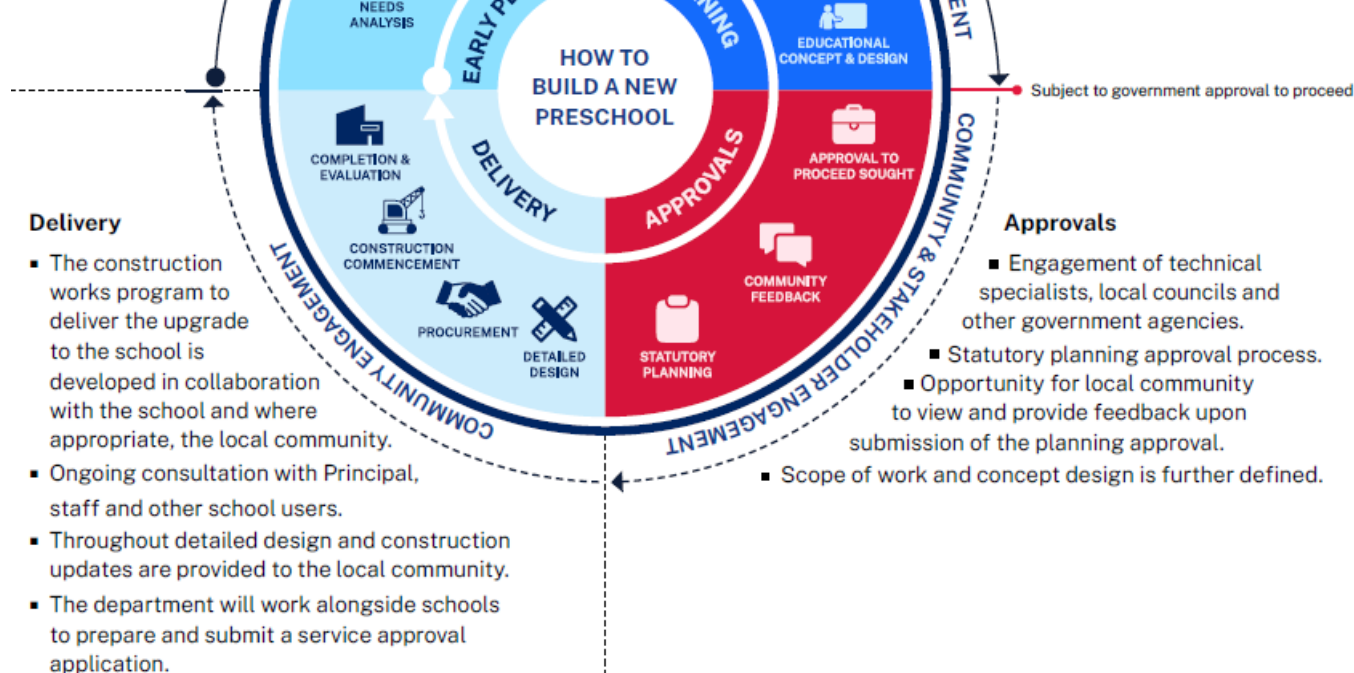
The information below takes you through the process of building a new preschool. To learn more about how we deliver new and upgraded schools, visit edu.nsw.link/SchoolShowcase.

Early planning

- Consideration and studies of demographic trends, education requirements, the condition of the existing school buildings, catchment boundaries, heritage requirements, transport links and partnership opportunities.
- Doing so means that we:
 - consider the needs of the local area now and into the future.
 - ensure the right school is designed for the community.
- An important step before an architect or other contractors are appointed and official community engagement commences.

Planning

- Consultants such as architects and project managers are appointed.
- Investigation and review of site and development of master plan options.
- Master planning considers options for the general size, shape and form of buildings for a specific school site.
- A Project Reference Group (PRG) is established.
- Operational, educational and service delivery factors are understood and considered by the PRG.
 - A series of preliminary master plan options are considered along with the educational concept and design for the school.
 - A preferred concept design option is identified.
 - Once a preferred option is identified approval is needed in order to progress from planning through to project delivery.



Delivery

- The construction works program to deliver the upgrade to the school is developed in collaboration with the school and where appropriate, the local community.
- Ongoing consultation with Principal, staff and other school users.
- Throughout detailed design and construction updates are provided to the local community.
- The department will work alongside schools to prepare and submit a service approval application.

Approvals

- Engagement of technical specialists, local councils and other government agencies.
- Statutory planning approval process.
- Opportunity for local community to view and provide feedback upon submission of the planning approval.
- Scope of work and concept design is further defined.