



Punchbowl Public School

Planning update

September 2022

Investing in our schools

The NSW Government is investing \$8.6 billion in school infrastructure over the next four years, continuing its program to deliver 160 new and upgraded schools to support communities across NSW. This builds on the more than \$9.1 billion invested in projects delivered since 2017, a program of \$17.7 billion in public education infrastructure.

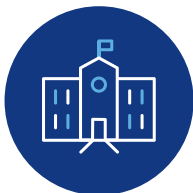
The NSW Department of Education is committed to delivering new and upgraded schools for communities across NSW. The delivery of these important projects is essential to the future learning needs of our students and supports growth in the local economy.

Upgrading Punchbowl Public School

Punchbowl Public School is in the planning phase. It is anticipated the upgrade will include:

- additional permanent teaching spaces and core facilities
- relocation of the administration building to enable better security and street presence for the school
- upgrade and refurbishment of the early intervention and support classrooms.

The final scope of the upgrade is subject to business case and statutory planning approvals. School Infrastructure (SINSW) has been working closely with the Punchbowl Public School leadership team to develop a masterplan for the project and ensure the upgrade will meet the needs of the school community. Further detail will be added to the design as the project progresses through the schematic and detailed design phases, and into project delivery.



New permanent classrooms



New street facing
administration building



Upgrades for
learning support

For more information contact:

School Infrastructure NSW
Email: schoolinfrastructure@det.nsw.edu.au
Phone: 1300 482 651
www.schoolinfrastructure.nsw.gov.au

What have we done so far?

A Project Reference Group (PRG) has been established for the project and includes representatives from the Department of Education, the principal and Director Educational Leadership of Punchbowl Public School, planners, and design professionals. The role of the PRG in the planning phase is to make recommendations and provide key information from an operational, educational and logistics perspective, to ensure the needs of the school can best be met within the scope of the project.

Since the announcement of the project in the 2021/22 NSW Budget, we have:

- further analysed demographic trends and the school community needs
- conducted site investigations to assess the condition of existing buildings and site surroundings
- appointed an architect to develop the design in consultation with the PRG. Design work so far includes multiple master plan options and consideration of the advantages and disadvantages of each.
- undertaken transport studies, contamination assessment and site due diligence, and consideration of project staging options as part of the project.

What's next?

- A business case to seek formal government approval to proceed with the upgrade will soon be submitted to NSW Treasury.
- Ongoing development of the design in consultation with representatives from the Department of Education and Punchbowl Public School, architects, planners, and design professionals.

What is the purpose of the business case?

Funding has been committed to upgrade Punchbowl Public School, but in order for the funds to be released for further design development and construction, we have to prepare a business case for NSW Treasury approval.

The business case process provides the basis for the continued development of the project options, through refinement, comparison, analysis, and evaluation, to ensure that the project represents the greatest value for money solution, while meeting the needs of the school community.

A message from the principal

I am excited to be working closely with the School Infrastructure NSW project team to progress the planning phase of the upgrades to our school.

In the past year our Director of Educational Learning (Chullora Principals Network) Andrew Fielding, myself, and the school leadership team have been meeting with the project team to discuss the most important needs of our school community and working with the design team to prioritise these needs, within the budget allocated for this upgrade.

We know a front facing administration building would make accessing the school so much easier for parents, students and staff, and we can't wait to work through these ideas further. We are also really looking forward to brand new classrooms, including upgrades to the Support Learning Unit and Early Intervention spaces.

I know I speak on behalf of the entire school staff when I say we are excited about this project progressing and the new permanent teaching spaces our staff and students will get to enjoy.

Donna McGeary

For more information contact:

School Infrastructure NSW
Email: schoolinfrastructure@det.nsw.edu.au
Phone: 1300 482 651
www.schoolinfrastructure.nsw.gov.au

How will we keep you updated?

We will share more information with the local community as the project progresses. An information session will be held at the school after the business case is approved, for you to find out more about the project and ask any questions. Details will be provided on our website and shared with the school.

To stay up to date on the project, please visit the project webpage and view materials published in the 'library' tab. www.schoolinfrastructure.nsw.gov.au/projects/p/Punchbowl-Public-School-upgrade.html.

Alternatively, you can contact us directly on the email address and phone number at the bottom of this page.

Want to know more about how we build and upgrade schools?

We design and deliver schools to suit the individual needs of the local school community. We harness opportunities and solve challenges. As a result, no two schools are exactly the same.

What remains consistent is school infrastructure that empowers teachers to prepare students with the skills and capabilities they need to thrive in a rapidly changing and interconnected world.

Take a look at some of the upgrades we have delivered and see how these varied spaces support teaching and learning.

Simply scan the QR code, or visit edu.nsw.link/SchoolShowcase.



For a **Translation and Interpreting Service**, call **131 450** and ask them to call the Department of Education - School Infrastructure NSW on **1300 482 651**.

অনুবাদ এবং দোভাষী পরিষেবার জন্য, 131 450 এ কল করুন এবং তাদেরকে 1300 482 651 নম্বরে শিক্ষা বিভাগ - স্কুল অবকাঠামো এনএসডব্লিউতে কল করতে বলুন।

للحصول على خدمة الترجمة الخطية والشفهية، يمكن الاتصال على الرقم 131 450 ثم طلب الاتصال بدائرة التربية والتعليم - هيئة البنى التحتية للمدارس في نيو ساوث ويلز على الرقم 1300 482 651.

For more information contact:

School Infrastructure NSW
Email: schoolinfrastructure@det.nsw.edu.au
Phone: 1300 482 651
www.schoolinfrastructure.nsw.gov.au

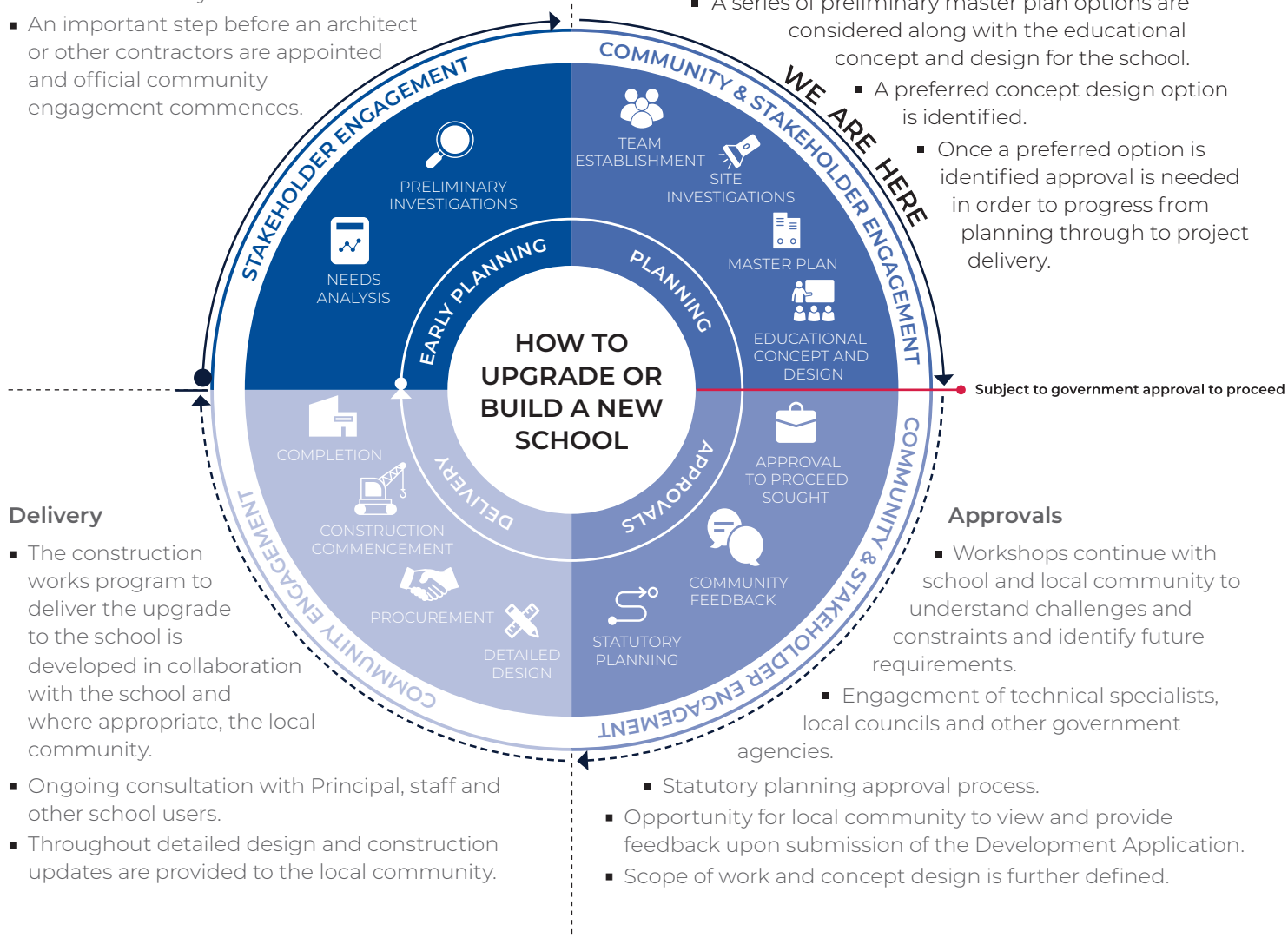
The information below takes you through the journey of upgrading or building a new school

Early planning

- Consideration and studies of demographic trends, education requirements, the condition of the existing school buildings, catchment boundaries, heritage requirements, transport links and partnership opportunities.
- Doing so means that we:
 - consider the needs of the local area now and into the future.
 - ensure the right school is designed for the community.
- An important step before an architect or other contractors are appointed and official community engagement commences.

Planning

- Consultants such as architects and project managers are appointed.
- Investigation and review of site and development of master plan options.
- Master planning considers options for the general size, shape and form of buildings for a specific school site.
- A Project Reference Group (PRG) is established.
- Operational, educational and service delivery factors are understood and considered by the PRG.
 - A series of preliminary master plan options are considered along with the educational concept and design for the school.
 - A preferred concept design option is identified.



Delivery

- The construction works program to deliver the upgrade to the school is developed in collaboration with the school and where appropriate, the local community.
- Ongoing consultation with Principal, staff and other school users.
- Throughout detailed design and construction updates are provided to the local community.

Approvals

- Workshops continue with school and local community to understand challenges and constraints and identify future requirements.
 - Engagement of technical specialists, local councils and other government agencies.
- Statutory planning approval process.
- Opportunity for local community to view and provide feedback upon submission of the Development Application.
- Scope of work and concept design is further defined.

For more information contact:

School Infrastructure NSW
 Email: schoolinfrastructure@det.nsw.edu.au
 Phone: 1300 482 651
www.schoolinfrastructure.nsw.gov.au