

Punchbowl Public School upgrade

Project update | March 2025



Investing in our schools

As part of the NSW Government's plan to rebuild public education, the 2024-25 Budget is delivering record education funding, including \$3.6 billion for new and upgraded schools in Western Sydney. This targeted investment will ensure growing communities get access to a world-class public education.

Project overview

A project to upgrade Punchbowl Public School is currently in construction. The project includes a new two storey building facing Rossmore Avenue and a refurbishment of the existing administration area to create a student support unit.

Progress update

- The new building's external façade, windows and brickwork are now complete.
- Work is continuing on the building's interior including electrical, tiling, walls, ceilings and joinery. Progress pictures can be seen on the next page.
- The support unit vehicle drop off area, marking of accessible pickup and drop off spaces and footpaths for pedestrian access to the school are complete.
- Work to connect to the Sydney Water supply under Canterbury Road is complete.

Next steps

- Continue work on the interior of the new building.
- Start deliveries of the classroom furniture, fittings and equipment.
- Continue external landscaping.

Working hours

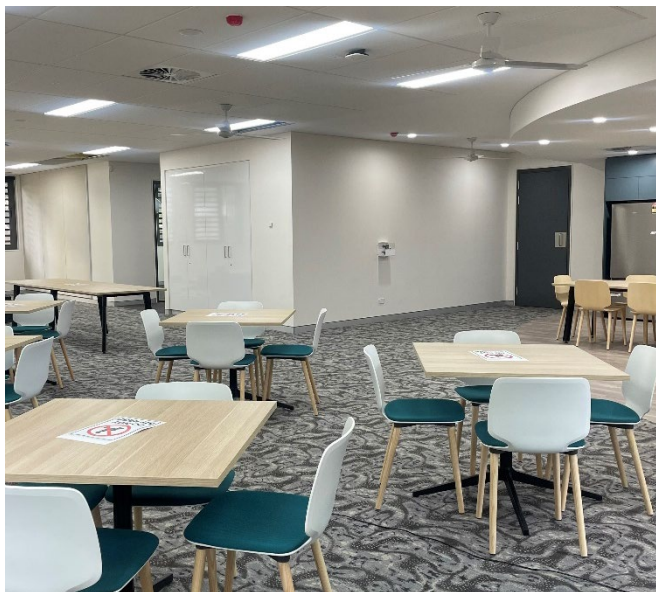
Work will continue on site throughout the school holidays and will take place within the approved construction hours of 7 am to 5 pm Monday to Friday, and 8 am to 5 pm on Saturdays. No work will be undertaken on Sundays or public holidays, unless otherwise advised.

If you have any queries or concerns about this project, you can contact School Infrastructure during business hours on 1300 482 651 or email schoolinfrastructure@det.nsw.edu.au.



Work in progress

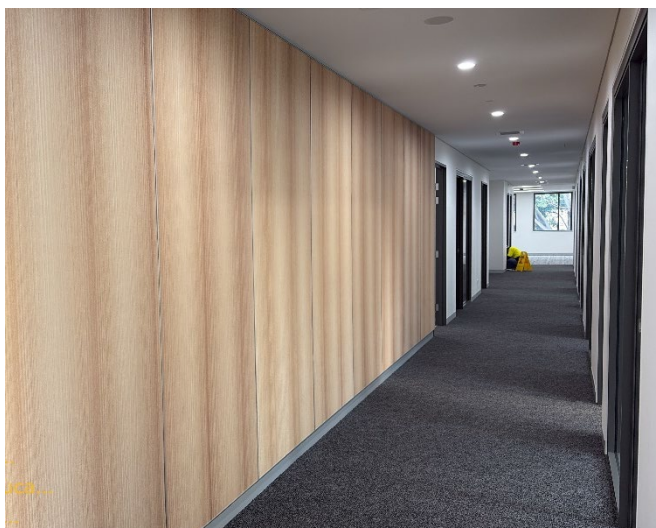
The main structure of the building is complete, with internal works well progressed.



New staff room area



Staff room kitchen and amenities



Ground floor administration hallway



Level 1 balcony to the new classrooms