

# Upgrading Punchbowl Public School

As part of the NSW Government's plan to rebuild essential services, the 2023-24 Budget is delivering a record \$3.5 billion for new and upgraded schools in Western Sydney. This targeted investment in growing communities will ensure working families get access to a world class public education.

This includes a project to upgrade Punchbowl Public School which is in the detailed design phase. It is anticipated the upgrade will include:



Additional fit-for-purpose permanent classrooms and core facilities



Relocation of the administration unit to enable better security and street presence for the school



Upgrade and refurbishment of the early intervention and support classrooms



Artist impression of Punchbowl Public School from Rossmore Avenue

## Punchbowl Public School

For more information phone: 1300 482 651  
Email: [schoolinfrastructure@det.nsw.edu.au](mailto:schoolinfrastructure@det.nsw.edu.au)  
[schoolinfrastructure.nsw.gov.au](http://schoolinfrastructure.nsw.gov.au)

# Artist's impressions of the new building\*



\*Indicative only

## Punchbowl Public School

For more information phone: 1300 482 651  
Email: [schoolinfrastructure@det.nsw.edu.au](mailto:schoolinfrastructure@det.nsw.edu.au)  
[schoolinfrastructure.nsw.gov.au](http://schoolinfrastructure.nsw.gov.au)



# Punchbowl Public School upgrade site plan



## Punchbowl Public School

For more information phone: 1300 482 651  
Email: [schoolinfrastructure@det.nsw.edu.au](mailto:schoolinfrastructure@det.nsw.edu.au)  
[schoolinfrastructure.nsw.gov.au](http://schoolinfrastructure.nsw.gov.au)

# Timeline to completion

The upgraded Punchbowl Public School includes a new administration and teaching block with 8 permanent teaching spaces and a new front facing administration and staff facilities.

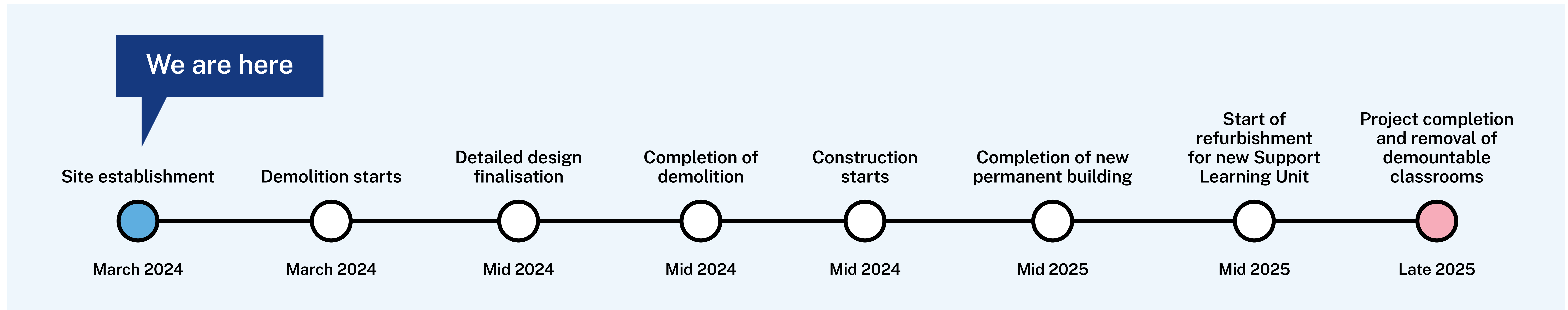
Once the construction of the new building is complete, it is anticipated refurbishment of the current admin space to create new support learning spaces will start.

More details on the design of these refurbished spaces will be shared as the project progresses. Upon completion of all works, the temporary demountable classrooms will be removed from site.

We will continue to update the community on key project milestones. The health, safety and wellbeing of the Punchbowl Public School community, students, staff and parents, is our highest priority.

School Infrastructure NSW are working with our contractor to manage impacts on the local community, and in close consultation with Punchbowl Public School leadership to ensure that school operations continue with minimal disruption.

For more information about how we manage construction impacts on our projects, please scan the QR code or visit [edu.nsw.link/ConstructionImpacts](https://edu.nsw.link/ConstructionImpacts).



## Punchbowl Public School

For more information phone: 1300 482 651  
Email: [schoolinfrastructure@det.nsw.edu.au](mailto:schoolinfrastructure@det.nsw.edu.au)  
[schoolinfrastructure.nsw.gov.au](https://schoolinfrastructure.nsw.gov.au)

# New front facing administration & staff facilities

## Ground Floor plan



\*These plans are subject to amendment during the detailed design stage

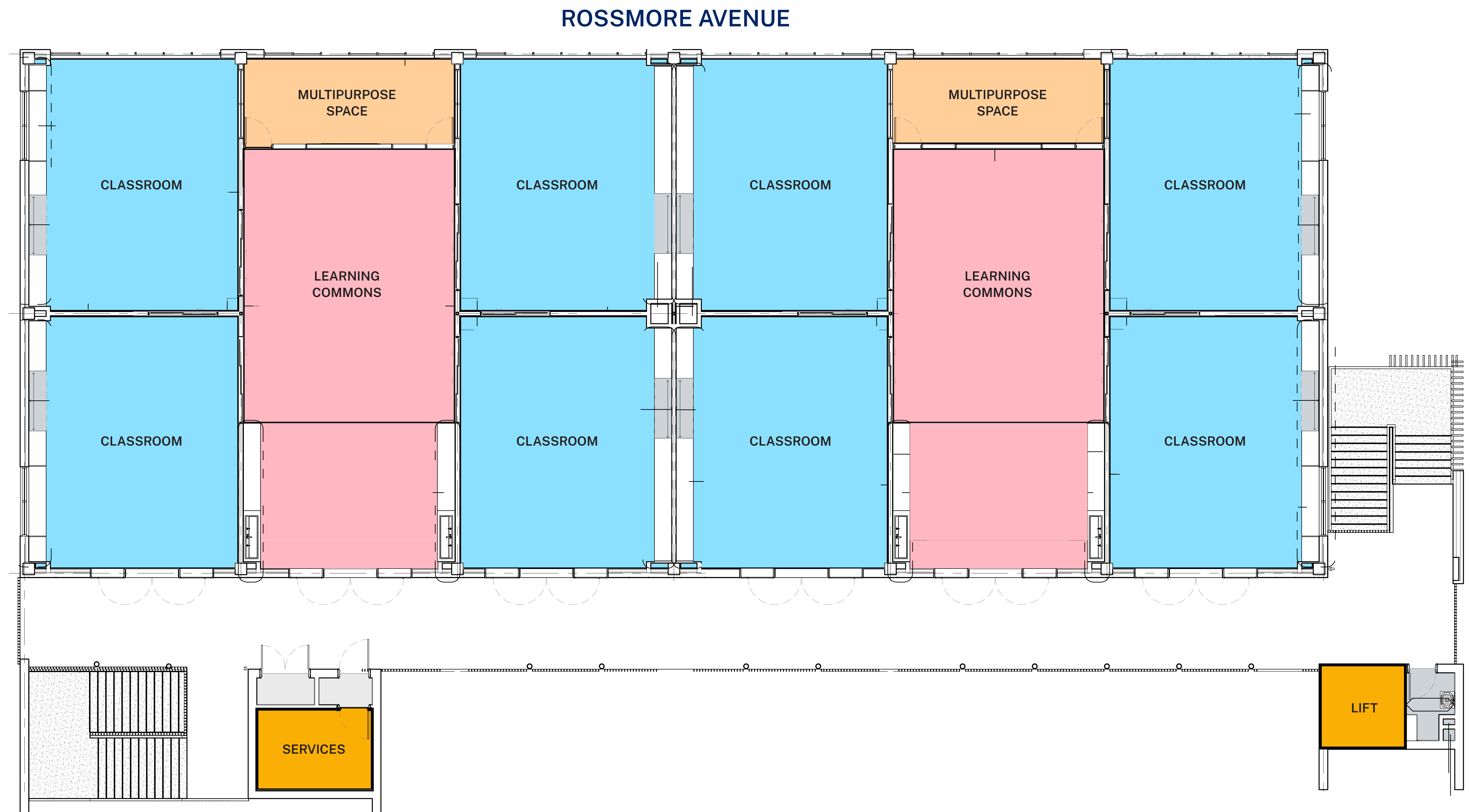
## Punchbowl Public School

For more information phone: 1300 482 651  
Email: [schoolinfrastructure@det.nsw.edu.au](mailto:schoolinfrastructure@det.nsw.edu.au)  
[schoolinfrastructure.nsw.gov.au](http://schoolinfrastructure.nsw.gov.au)

# New learning clusters and contemporary classrooms

The layout features new learning clusters of classrooms and learning spaces as per the new Educational Facilities Standards & Guidelines (EFSG) being rolled out by School Infrastructure NSW across all new schools.

## Level 1 Floor plan



\*These plans are subject to amendment during the detailed design stage

## Punchbowl Public School

For more information phone: 1300 482 651  
Email: [schoolinfrastructure@det.nsw.edu.au](mailto:schoolinfrastructure@det.nsw.edu.au)  
[schoolinfrastructure.nsw.gov.au](http://schoolinfrastructure.nsw.gov.au)

# How we build and upgrade schools

In all our new schools or school upgrades when working on design, we must meet our Educational Facilities Standards and Guidelines (EFSG) for both indoor and outdoor education facilities. The guiding principles of the EFSG provide our vision for learning environments and are enriched by the needs and goals of the school and local community. These guidelines guarantee that all new schools and school upgrades align with the NSW Department of Education's vision and can deliver the Australian curriculum while allowing the school community to contribute ideas towards making the school their own.

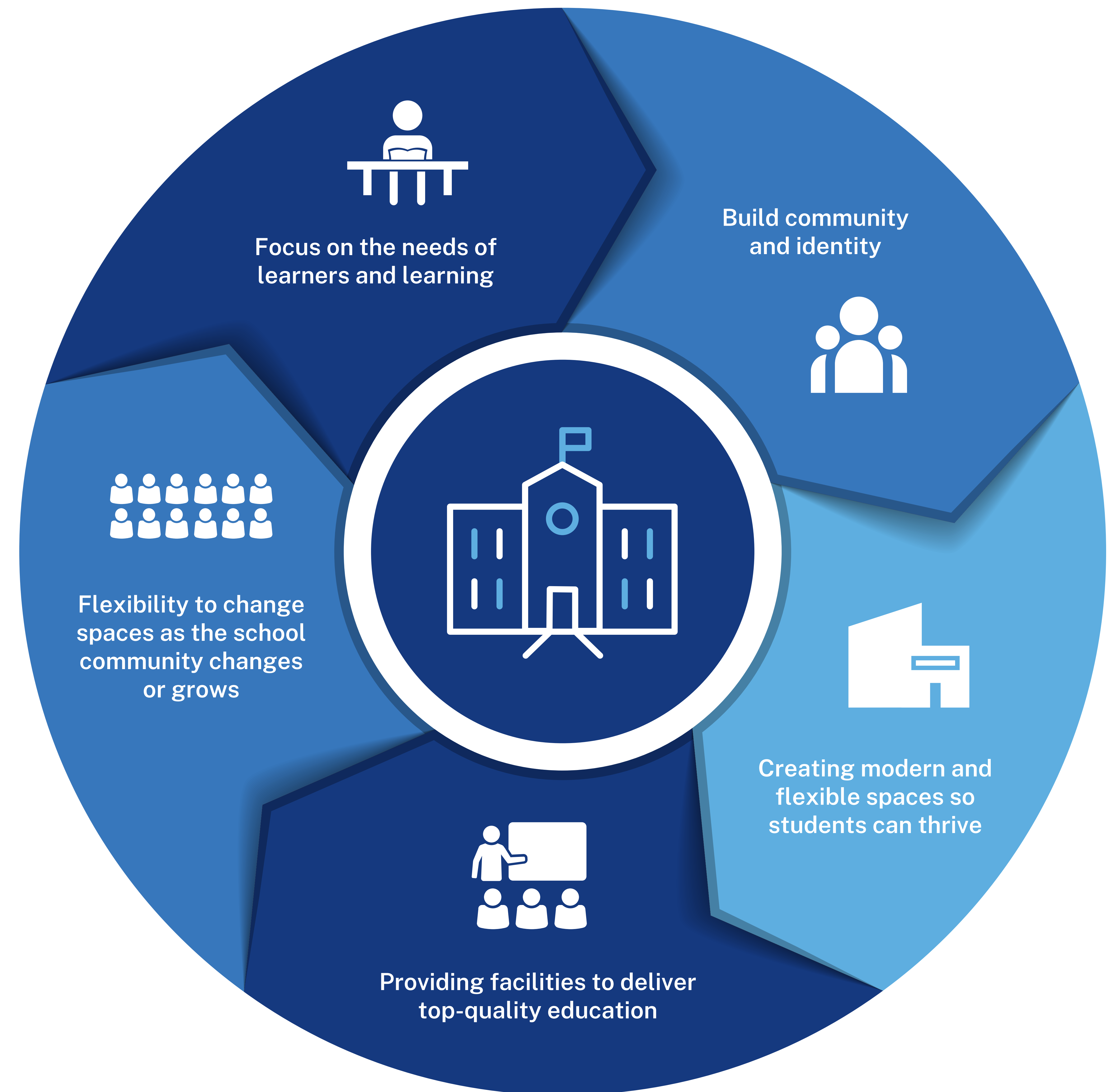
## Want to know more about how we build and upgrade schools?

We design and deliver schools to suit the individual needs of the local school community. We harness opportunities and solve challenges. As a result, no two schools are exactly the same.

What remains consistent is school infrastructure that empowers teachers to prepare students with the skills and capabilities they need to thrive in a rapidly changing and interconnected world.

Take a look at some of the upgrades we have delivered and see how these varied spaces support teaching and learning.

Visit [edu.nsw.link/SchoolShowcase](https://edu.nsw.link/SchoolShowcase) or scan the QR code.



## Punchbowl Public School

For more information phone: 1300 482 651  
Email: [schoolinfrastructure@det.nsw.edu.au](mailto:schoolinfrastructure@det.nsw.edu.au)  
[schoolinfrastructure.nsw.gov.au](https://schoolinfrastructure.nsw.gov.au)