

Punchbowl Public School

Planning update | March 2023

Investing in our schools

The NSW Government is investing \$8.6 billion in school infrastructure over the next 4 years, continuing its program to deliver 160 new and upgraded schools to support communities across NSW. This builds on the more than \$9.1 billion invested in projects delivered since 2017, a program of \$17.7 billion in public education infrastructure.

The NSW Department of Education is committed to delivering new and upgraded schools for communities across NSW. The delivery of these important projects is essential to the future learning needs of our students and supports growth in the local economy.

Project overview

The Punchbowl Public School upgrade project is now in planning stage and requires the completion of a business case to be approved by NSW Treasury to determine the full scope of the upgrade. It is anticipated the upgrade will include:

- additional fit-for-purpose permanent teaching spaces and core facilities,
- relocation of the administration unit to enable better security and street presence for the school,
- upgrade and refurbishment of the early intervention and support classrooms.

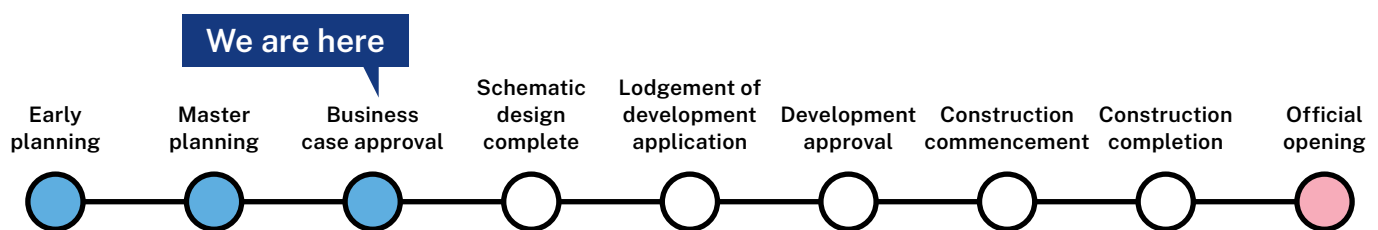
The final scope of the upgrade is subject to business case assessment and statutory planning approvals.

Progress update

School Infrastructure (SINSW) has been working closely with the Punchbowl Public School leadership team to develop a masterplan for the project to ensure the upgrade will meet the needs of the school community.

In conjunction with our architect, we have investigated a range of options for the upgrade to Punchbowl Public School and explored several possible outcomes that would achieve the current and expected enrolment numbers within the allocated budget.

These options were reviewed with the school leadership and subsequently a preferred masterplan was selected which is now progressing to the final stage of business case assessment. Further detail will be added to the design as the project progresses through the schematic and detailed design phases, and beyond into project delivery.



Next steps

The final stages of the business case will be prepared before it is submitted to NSW Treasury for approval. NSW Treasury approval of the business case will allow the project to progress into detailed design, contractor procurement and project delivery.

Detailed site investigations and planning for enabling works will need to be undertaken to prepare for the upcoming delivery phases. This involves consideration of education requirements, traffic and transport links and possible shared area opportunities. Doing so means that we consider the needs of the local area now and into the future to ensure the right project is designed for the community. We will share early designs in coming months and provide opportunity for community feedback.

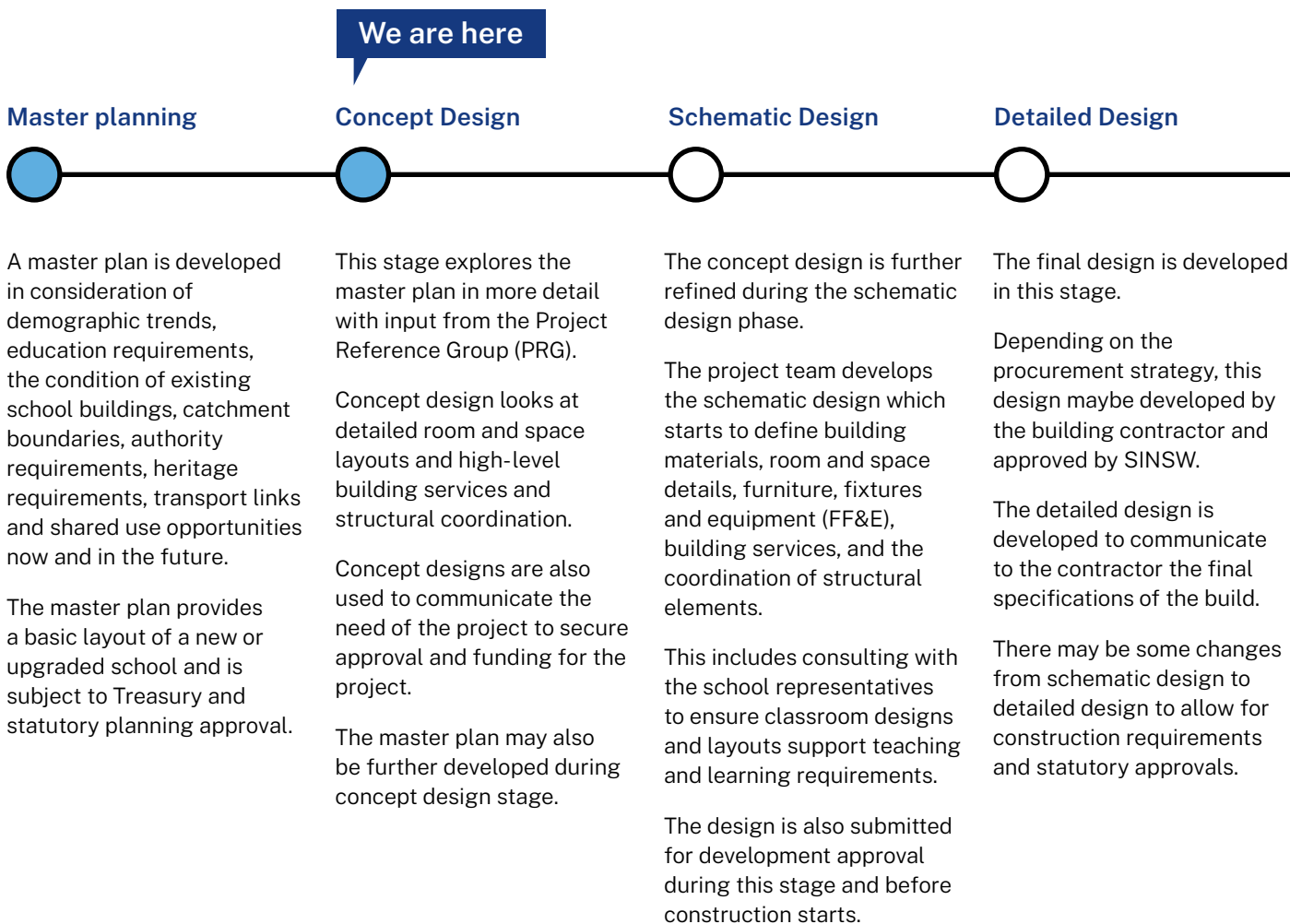
The design process

The scope of work for Punchbowl Public School has been developed based on a range of factors including:

- assessment of population and enrolment data
- school requirements
- current trends in education and learning
- existing infrastructure and condition of assets at the school
- statutory and planning requirements
- available funding
- size and physical constraints of the school site.

Assessment of these factors was completed in consultation with key stakeholders and guided by the Educational Facilities Standards & Guidelines (EFSG).

There are four stages of design for school upgrades. As the design evolves into more detail, there may be some noticeable differences compared to what has previously been shared.



When will the school upgrade be complete?

Approval of the business case by NSW Treasury, development consent, and engagement of a building contractor is required before we are able to provide opening dates for the upgrade. The construction program needs to be determined in consultation with the building contractor. We will share this information as soon as we are able to.

We are committed to delivering the upgraded school as soon as practically possible and will look for opportunities to save time where we can, while still complying with best practice and governance requirements.

How can I get involved?

We are committed to working together with our school communities and stakeholders to deliver the best learning facilities for students. As the project progresses, we will share details with the community for their feedback.

A dedicated [project page](#) has been published on the School Infrastructure NSW website, which is updated as the project progresses. You can also contact us via our community information line and email on the details below.

Want to know more about how we build and upgrade schools?


We design and deliver schools to suit the individual needs of the local school community. We harness opportunities and solve challenges. As a result, no two schools are exactly the same.

What remains consistent is school infrastructure that empowers teachers to prepare students with the skills and capabilities they need to thrive in a rapidly changing and interconnected world.


Take a look at some of the upgrades we have delivered and see how these varied spaces support teaching and learning.

Simply scan the QR code, or visit edu.nsw.link/SchoolShowcase.



 For a Translation and Interpreting Service call 131 450 and ask them to call the Department of Education - School Infrastructure NSW on 1300 482 651.

 للحصول على خدمة الترجمة الخطية والشفهية، يمكن الاتصال على الرقم 131 450 ثم طلب الاتصال بدائرة التربية والتعليم - هيئة البنى التحتية للمدارس في نيو ساوث ويلز على الرقم 1300 482 651.

 अनुवाद एवं दुभाषिया सेवा के लिए, 131 450 पर फोन करें और उन्हें शिक्षा विभाग - School Infrastructure NSW को 1300 482 651 पर फोन करने के लिए कहें।



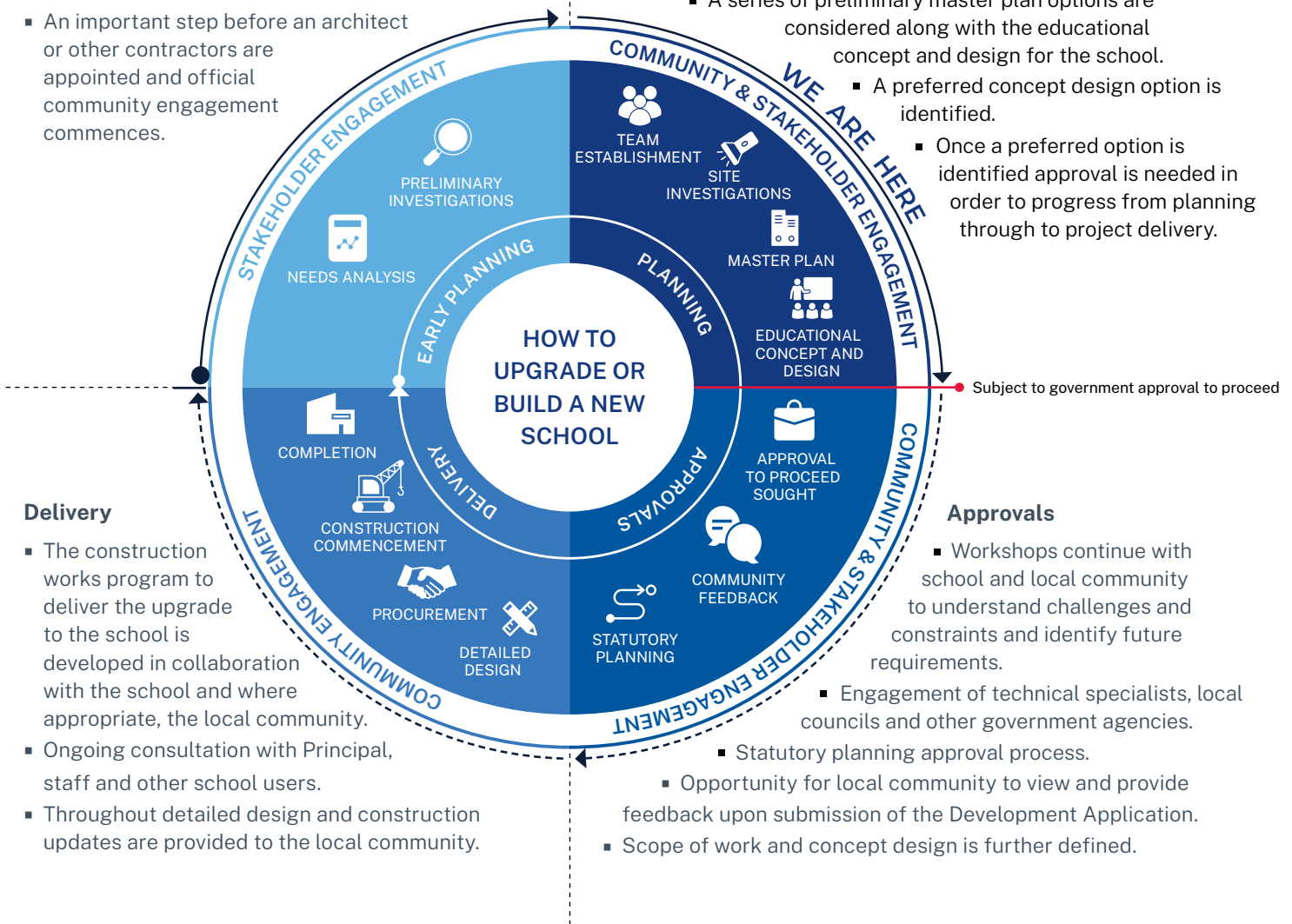
The information below takes you through the journey of upgrading or building a new school.

Early planning

- Consideration and studies of demographic trends, education requirements, the condition of the existing school buildings, catchment boundaries, heritage requirements, transport links and partnership opportunities.
- Doing so means that we:
 - consider the needs of the local area now and into the future.
 - ensure the right school is designed for the community.
- An important step before an architect or other contractors are appointed and official community engagement commences.

Planning

- Consultants such as architects and project managers are appointed.
- Investigation and review of site and development of master plan options.
- Master planning considers options for the general size, shape and form of buildings for a specific school site.
- A Project Reference Group (PRG) is established.
- Operational, educational and service delivery factors are understood and considered by the PRG.
 - A series of preliminary master plan options are considered along with the educational concept and design for the school.
 - A preferred concept design option is identified.
- Once a preferred option is identified approval is needed in order to progress from planning through to project delivery.



Delivery

- The construction works program to deliver the upgrade to the school is developed in collaboration with the school and where appropriate, the local community.
- Ongoing consultation with Principal, staff and other school users.
- Throughout detailed design and construction updates are provided to the local community.

Approvals

- Workshops continue with school and local community to understand challenges and constraints and identify future requirements.
 - Engagement of technical specialists, local councils and other government agencies.
- Statutory planning approval process.
 - Opportunity for local community to view and provide feedback upon submission of the Development Application.
- Scope of work and concept design is further defined.