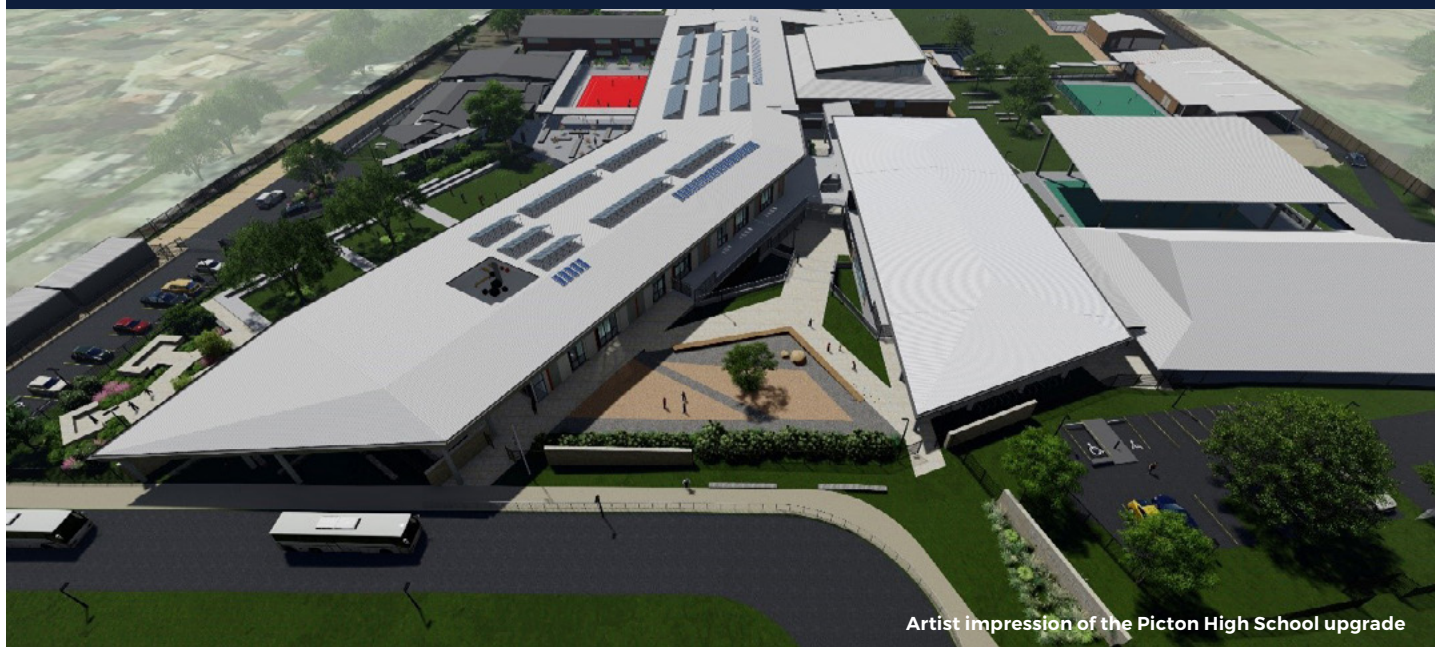


Picton High School

Information pack

July 2020



Artist impression of the Picton High School upgrade

The NSW Government is investing \$6.7 billion over four years to deliver more than 190 new and upgraded schools to support communities across NSW. In addition, a record \$1.3 billion is being spent on school maintenance over five years, along with a record \$500 million for the sustainable Cooler Classrooms program to provide air conditioning to schools. This is the largest investment in public education infrastructure in the history of NSW.

The NSW Department of Education is committed to delivering new and upgraded schools for communities across New South Wales. The delivery of these important projects is essential to the future learning needs of our students and supports growth in the local economy.

We are redeveloping Picton High School to provide the latest education facilities to serve growing student and community needs. The redevelopment will deliver the following benefits and more.



Flexible learning spaces



New staff administration areas and entrance



New Covered Outdoor Learning Area (COLA)



A library



New commercial kitchen and hospitality facilities



New technology, applied science and automotive workshops



New performing arts space, dance and PE facilities



New sporting field, outdoor sports courts and recreation spaces



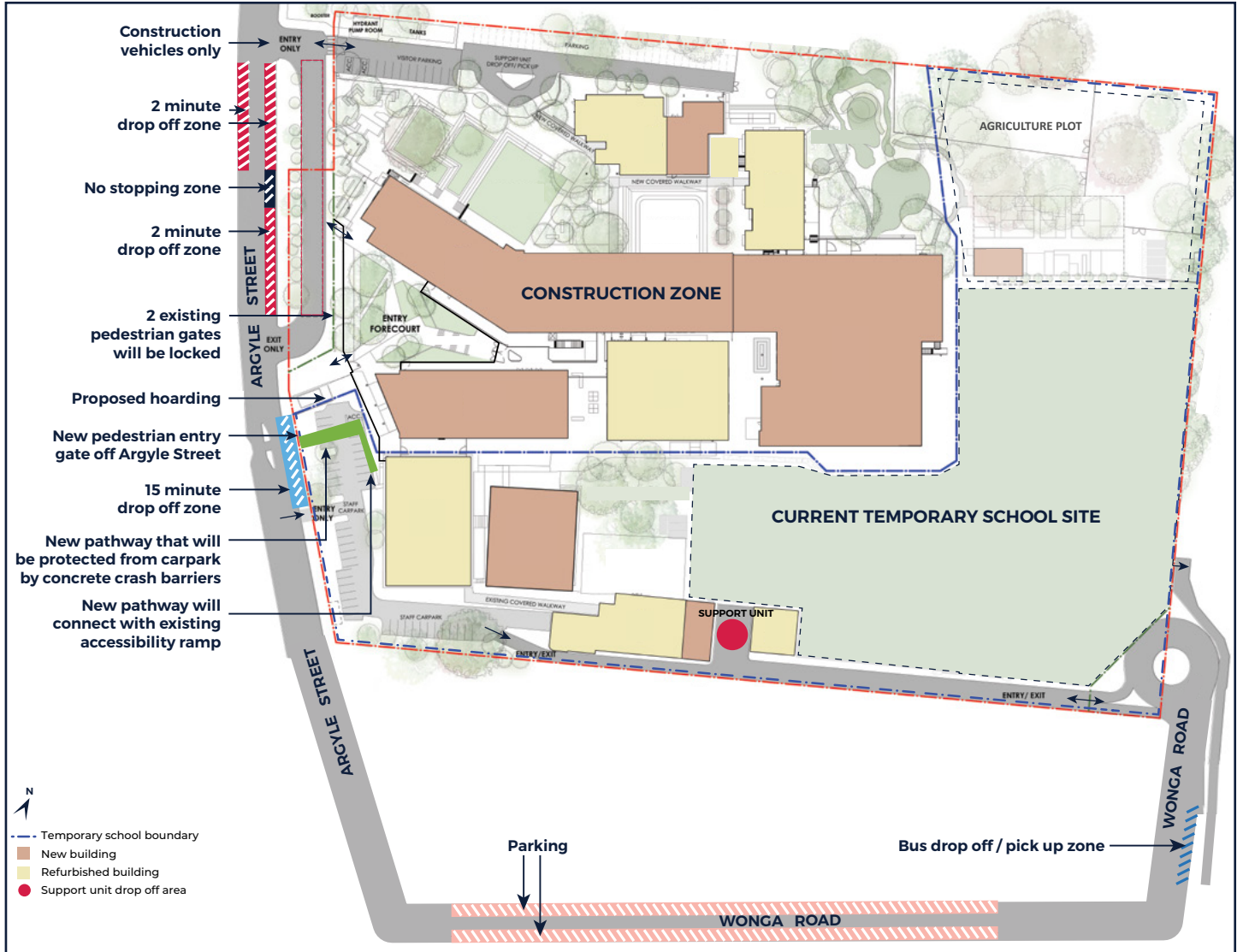
Refurbished lecture theatre

Picton High School

A major project is underway to redevelop Picton High School. The redevelopment will provide new flexible learning spaces, a new library and administration area, performing arts space, special education facilities and a covered outdoor learning area and recreation areas. The existing hall will be refurbished. The upgraded school will have capacity for 1500 students.

Progress summary

Significant progress has been made on construction of buildings for the new school. Concrete pours, foundations and steel and structural works have been completed for some of the new two and three storey buildings, with roofing to be installed in the near future. Refurbishment work on existing buildings has continued.



Picton High School site map

What to expect

In Term 3 you can expect to see the following works:

Building A

- East and west roof envelope and high level services complete by August 2020

Building B

- Roof envelope steel structure complete by August 2020

Existing Building D

- Internal alterations continuing

Building E

- Fit it out works continuing
- Lower roofs complete by July 2020
- Façade works to commence late June 2020
- Level 1 upper roofs complete by August 2020
- High level services continuing

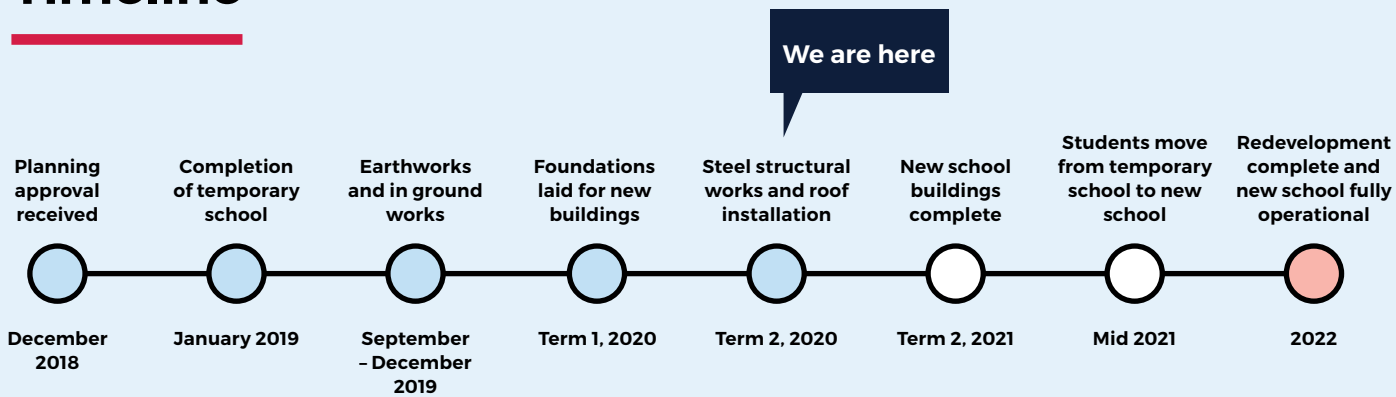
Existing Building F

- Internal alterations continuing
- Roof envelope complete by July 2020

Building G

- Roof envelope steel structure complete by July 2020

Timeline



Changes to drop off and pick up areas from July 2020

Works to install a new roundabout near the temporary school entrance in Wonga Road are nearly complete. The new roundabout will allow bus and vehicle access to the temporary school while works take place on the existing Argyle Street entrance and bus area.

Once these works are complete, there will be changes to student drop off and pick up arrangements. The project team is working closely with the school Principal and staff to ensure impacts to students, parents and carers are minimal. The school and the project will be providing detailed information to the school community on any changes to drop off and pick up arrangements.

New construction time-lapse video

The most recent time-lapse video is now available on the Project Website, (visit schoolinfrastructure.nsw.gov.au and search Picton High School). The video captures construction progress from September 2019 to April 2020 from a variety of camera angles.

Covid-19 update

The health and safety of our students, staff and community is our priority. We are temporarily changing some of the ways we keep you informed about our project in your community to account for social distancing measures.

How we will keep you informed

Until further notice we will:

- No longer knock on your door to talk about your local project. We will instead provide this information in a 'door knock notification' delivered to your letterbox
- Continue to deliver project updates and works notifications to your letterbox
- Share information with our communities online instead of in person.

Our information hotline and email address will continue to operate as normal.

The health and safety of our communities and our staff remains our highest priority. We remain committed to sharing project updates and important information about the school project in your area.

Frequently asked questions

When will construction be finished?

Construction of the redeveloped school is scheduled for completion in early 2022.

Is there scope to increase the numbers of students at the school?

The redeveloped school has been designed to cater for increased numbers of students through further works, if demand arises in the future.

What are the construction hours for the project?

Work hours for the main works are 7:00am to 6:00pm Monday to Friday and from 8:00am to 1:00pm Saturdays.

What will be done to minimise the construction impacts on the school, its students and the community?

The safety and wellbeing of the community is our utmost priority. All construction on site is conducted in accordance with state noise, safety and building regulations. Hoarding and shade cloth has been erected to reduce dust and noise impacts on the school and our neighbours. Dust from demolition and construction works is hosed down with water as required. Trucks entering and leaving the site ensure their loads are covered.

Notifications to the school community and surrounding neighbours will be issued prior to works. Any potentially disruptive tasks will be undertaken during non-school hours.

How will construction noise be managed during the project?

The construction team will monitor noise throughout the project to ensure all noise is within accepted levels. Noisy works will be scheduled outside of school hours and exam periods, where possible. The project team will work closely with the school to reduce impacts of noise as much as possible.

In line with legislated safety guidelines, construction noise and air quality is being monitored during construction.

Will there be opportunities to tour the new school when complete?

It is anticipated that orientation events will be held for students and their families to familiarise themselves with the new school once it is finished. We will provide welcome packs for staff and students on the first day back at the new school in early 2022.

What is the statutory planning approval process?

School Infrastructure NSW (SINSW) requires statutory planning approval from the Department of Planning, Industry and Environment (DPIE) as this project is classified as a State Significant Development (SSD). A SSD is a development of particular significance to the people and State of NSW. This project received planning approval in December 2018. You can find the relevant approval documents here – <https://www.planningportal.nsw.gov.au/major-projects> (search for Picton High School).

How will construction traffic be managed during the project?

There is likely to be an increase in construction traffic on Argyle Street, Picton, during the project.

Construction vehicle movements will be limited during drop off and pick up times and peak hours and traffic management is in place at all times to minimise impacts to other vehicles and pedestrians.

Stay informed



Website

Stay up to date by visiting the School Infrastructure NSW website schoolinfrastructure.nsw.gov.au



Email

Contact the Community Engagement team by emailing schoolinfrastructure@det.nsw.edu.au



Phone

Contact us between 9:00am and 5:00pm, Monday to Friday on **1300 482 651**