

Penshurst Public School

Everything you need to know for starting at the new school

December 2020



The NSW Government is investing \$7 billion over the next four years, continuing its program to deliver more than 200 new and upgraded schools to support communities across NSW. This is the largest investment in public education infrastructure in the history of NSW.



New student, staff and administration facilities



47 new, modern and flexible learning and teaching spaces



A new hall



A new library



Technology rich learning spaces



Maximised open play space including rooftop play area



Covered outdoor learning areas (COLA)

Project overview

A project to redevelop Penshurst Public School in response to enrolment growth in the area is almost complete.

The new public school will be ready for the start of school in 2021 and will:

- Accommodate up to 1000 students
- Incorporate flexible learning spaces with moveable furniture and adaptable room configurations
- Include technology-rich learning environments, with an emphasis on flexibility, and
- Deliver innovative, connected outdoor spaces that enable play and collaborative learning.

Term 1 2021 works

All of the new learning spaces and facilities will be open and ready for all students (K-6) to move in from Day 1 Term 1 2021.

Some minor finishing works and landscaping will take place in Term 1 2021 with minimal impact on the operation of the school. Hoarding and fencing will be in place where required to separate work areas from the operation of the school site and ensure the safety of staff and students.

Back to school in 2021

Where is the new Penshurst Public School located?

The new Penshurst Public School is located on Arcadia Street, Penshurst. The main school entry on Arcadia Street will provide both pedestrian and accessible access.

Tours of the new school

The Department of Education is delighted to deliver this project for students, families and the broader school community.

COVID-19 social restrictions permitting, an opportunity to tour the school will be available in early 2021.

When do I return to school?

Please note - Students will return to school on the following days:

- 8:30am, Monday 1 February 2021 – Years 1 to 6
- 8:30am, Monday 8 February 2021 – Kindergarten.



Artist impression of natural play area

What to expect

Welcome to your new school



Where do I go?

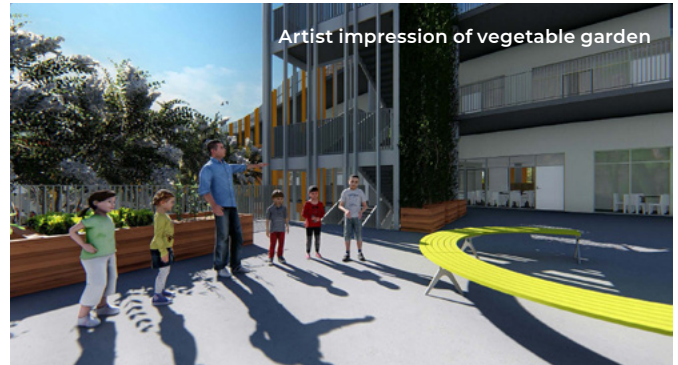
The first day of the 2021 school year will be exciting for students, teachers and parents of Penshurst Public School.

Department staff will be in place to direct students from the main entry of the new school. Due to COVID-19 restrictions parents will not be allowed onto the school grounds with the exception of Kindergarten.

Please review the following important information for the first day back at school:

- 1. Students enter the main entrance at 18 Arcadia Street.
- 2. Students will assemble in the main courtyard and then will be directed to their class groups by staff at 9:00am.
- 3. Each class will then be escorted to a dedicated homebase and given a tour of the new spaces.

What's on each level?



Learning spaces are arranged to reflect a student's progression through the school.

Ground Level – Kindergarten, administration, library, hall, courtyard, basketball court, and play areas.

The Kindergarten learning spaces have easy connection to the informal, naturalistic play areas at the Forest Road end of the site.

Level 1 – Years One to Two and rooftop vegetable garden

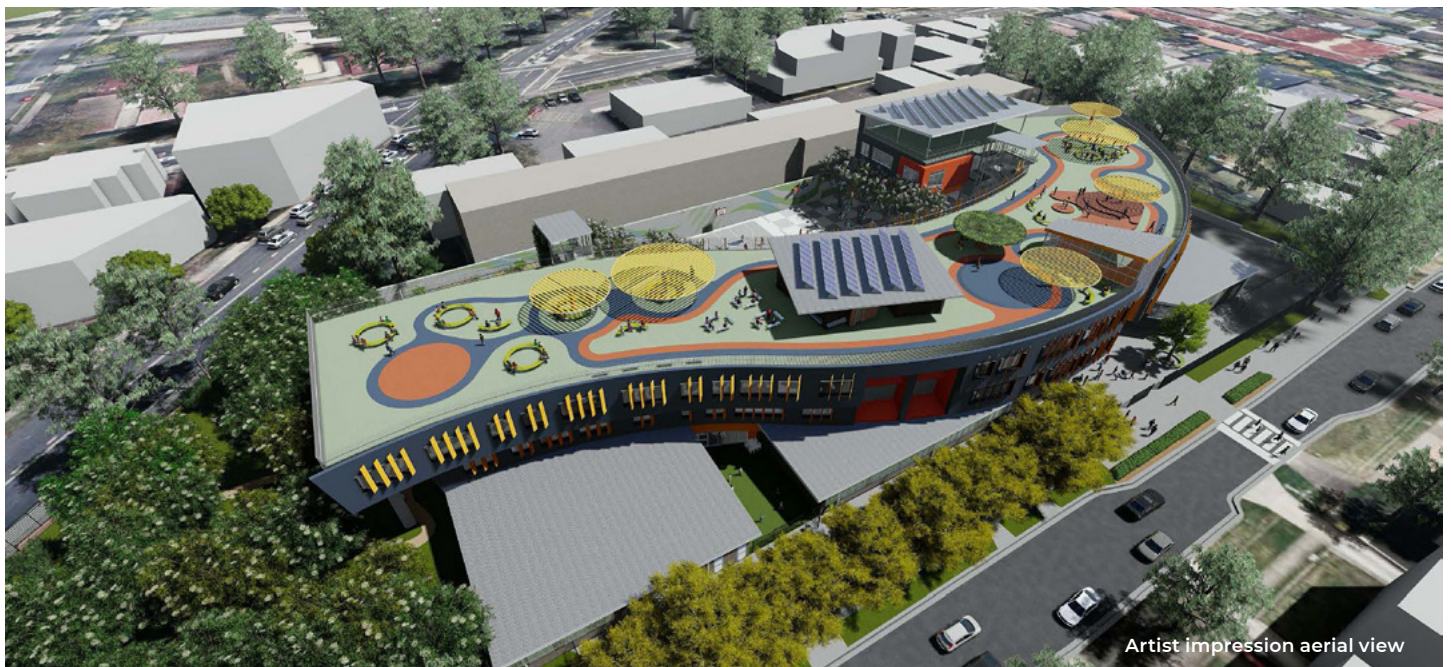
Level 2 – Years Three to Six

Rooftop – supervised play area and COLA

Innovative learning spaces

The new facilities will incorporate flexible learning spaces with moveable furniture and adaptable room configurations.

The learning spaces will be technology-enabled to serve multiple learning contexts from large class groups to small clusters, providing better opportunities for collaboration and personalised learning.



Penshurst Public School Transport Access Guide

Welcome to your new school

Where do I go?

Travel to Penshurst Public School for staff and students is easy with convenient public transport. This guide provides information on the different travel options to the school for staff and students.

Active modes

Cycling

Bicycle and scooter parking is available for students and staff on school grounds near the main entry.

Walking

The 7-minute walk from Penshurst train station is well paved with signalised intersections.

Public transport

Train

The school can be accessed from Penshurst Station. Penshurst station is a 7-minute walk via Penshurst Street and Forest Road, with services on the T4 Illawarra line.

Bus

Bus stops are located within 400 metres walking distance from the school on Penshurst Street and Cambridge Street. Routes include:

- **Routes 940, 941, 944 and 945** (Bankstown to Hurstville stopping on Penshurst Street)
- **Route 943** (Lugarno to Hurstville stopping on Penshurst Street)
- **Route M91** (Parramatta to Hurstville stopping on Cambridge Street)
- **Route 450** (Strathfield Station to Westfield Hurstville stopping at Hurstville Station)

Car travel

Parking

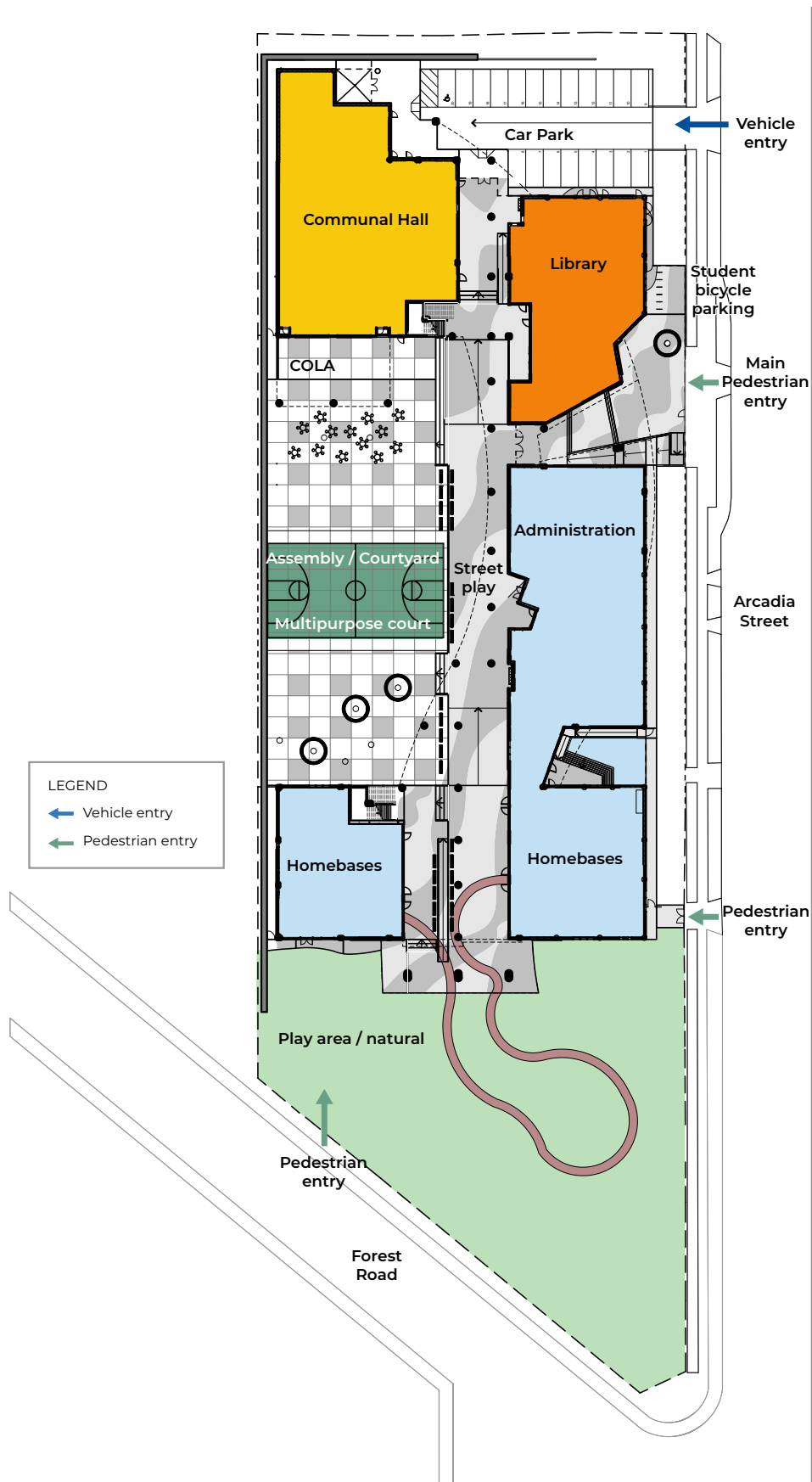
There is street parking around the school on Arcadia Street and Percival Street.

Drop off / Pick up

A kiss and drop zone is located on Arcadia Street.



Penshurst Public School site map



Frequently asked questions

Is there a drop-off and pick-up zone?

Yes. The drop-off and pick-up zones are located on Arcadia Street and were expanded as part of the redevelopment.

How do I know where to go?

Department staff will be in place on the first day to direct students. School maps will also be provided to students and wayfinding directions placed around the school grounds.

What happens if I arrive late?

Students that arrive after their year level start time are expected to report to the school administration building (main entrance on Arcadia Street) and sign in.

Where is the canteen?

The canteen is located on the ground floor near the library. Students will be shown all necessary amenities during their class tour on the first days of school. Online ordering procedures will continue.

Where is the sick bay?

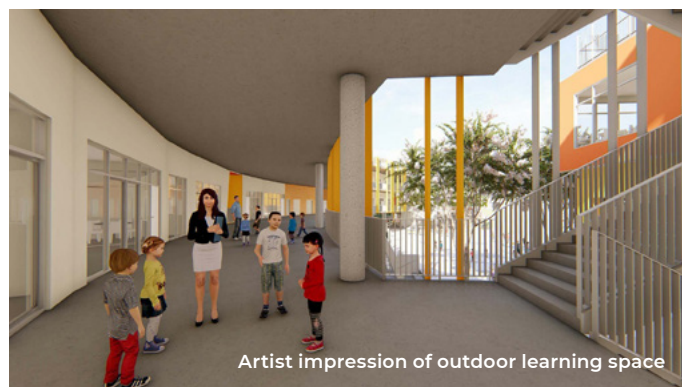
The sick bay is located on the ground floor within the administration area. Students will be shown all necessary amenities during their orientation tour on the first days of school.

Where are the play areas?

In early 2021, students will have access to the main courtyard, basketball court, and associated landscaped natural play areas.

Has the uniform changed?

No. Please check the Penshurst Public School website for the current uniform policy or contact the school. It is expected that all students will wear the complete school uniform at all times.



The school uniform can be purchased at Claudine Schoolwear located in Caringbah. Students are to wear school hats in the playground. They are available for purchase at the school office at the pop up school site located in the grounds of Peakhurst West Public School.

When are the break times?

All students will have two breaks during the school day, a 25 minute recess at 11:00am and 50 minute lunch at 1:10pm.

Who is Penshurst Public School's Out of School Hours Care (OSHC) and Before and After School Care (BASC) providers?

Penshurst Public School's current providers are 3Bridges Community OOSH at 23 St Georges Road, Penshurst and Blue Fit BASC at the Hurstville Aquatic Leisure Centre, Corner King Georges and Forest Road.

What kind of school will it be?

The school will be for students in Years K-6 inclusive. It will be a contemporary learning environment offering modern facilities.

Innovative learning prepares students across all curriculum areas and learning stages with skills and capabilities to thrive in a rapidly changing and interconnected world. It connects students and engages their sense of curiosity.

With the support of the Principal, staff and students are set to thrive in their new learning environment next year.

For more information contact:

Penshurst Public School

Email: penshurst-p.school@det.nsw.edu.au
Phone: 02 9580 3400

School Infrastructure NSW

Email: schoolinfrastructure@det.nsw.edu.au
Phone: 1300 482 651