

PENDLE HILL HIGH SCHOOL
PENDLE HILL NSW 2145

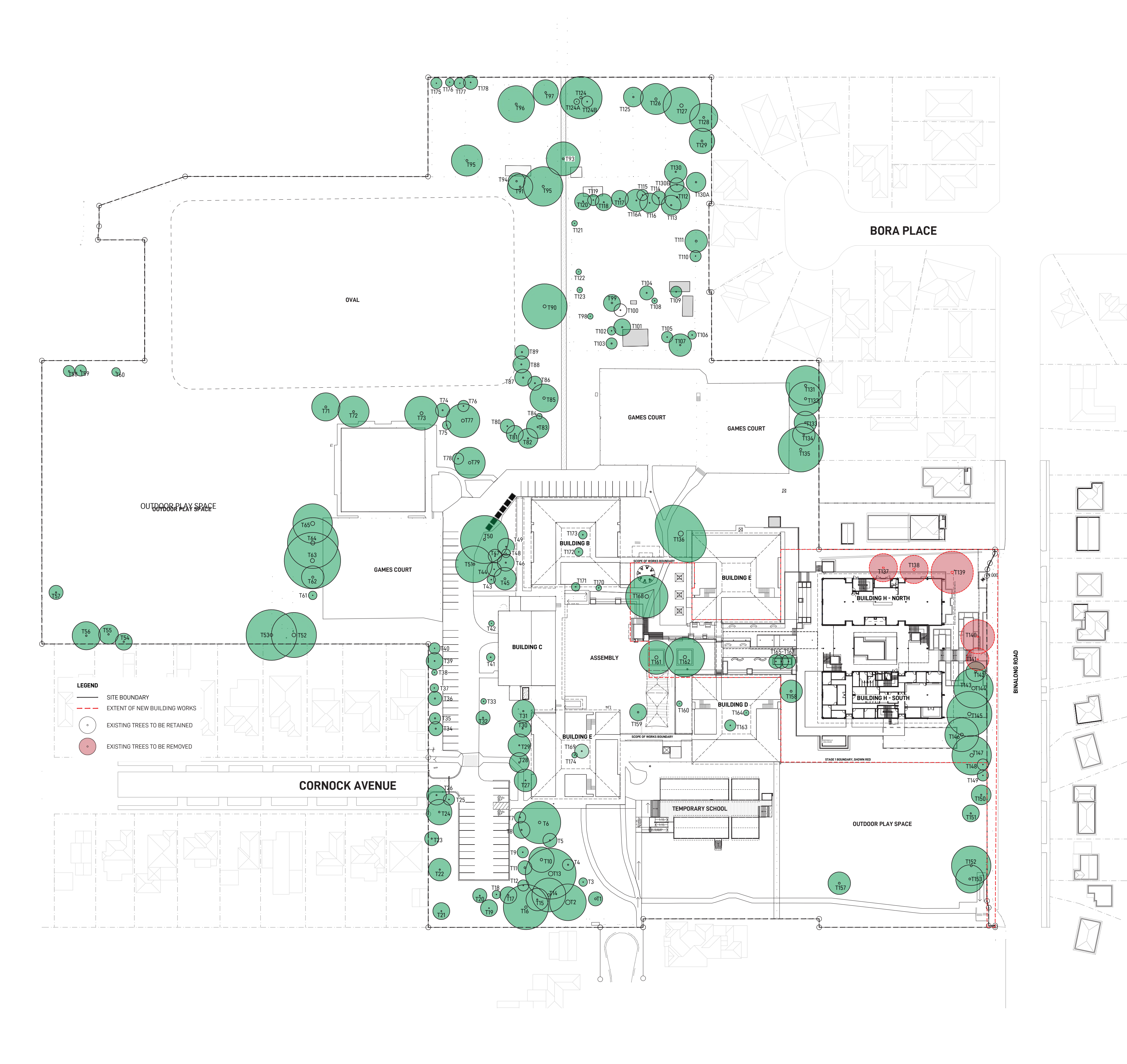
LANDSCAPE SSDA DOCUMENTATION

EXISTING SITE PLAN



DOCUMENT REGISTER

DRAWING NUMBER	DRAWING NAME	SCALE / DRAWING SIZE
LDA-000	LANDSCAPE COVER SHEET	N/A
LDA-001	EXISTING TREE PLAN	1:200 / A1
LDA-002	CANOPY COVERAGE PLAN	1:200 / A1
LDA-003	LANDSCAPE MASTERPLAN	1:200 / A1
LDA-004	LANDSCAPE SECTIONS 1	1:20 / A1
LDA-005	LANDSCAPE SECTIONS 2	1:30 / A1
LDA-006	LANDSCAPE SECTIONS 3	1:20 / A1
LDA-007	INDICATIVE RENDERS 1	N/A
LDA-008	INDICATIVE RENDERS 2	N/A
LDA-009	INDICATIVE RENDERS 3	N/A
LDA-010	INDICATIVE RENDERS 4	N/A
LDA-011	INDICATIVE PLANT PALETTE	N/A



EXISTING TREE SCHEDULE

Tree	Description	Existing Height	Proposed Action
1	Lophostemon confertus (Brush Box)	11m	Retain
2	Eucalyptus saligna (Sydney Blue Gum)	21m	Retain
3	Eucalyptus elata (River Peppermint)	5m	Retain
4	Allocasuarina torulosa (Rose She-Oak)	10m	Retain
5	Allocasuarina torulosa (Rose She-Oak)	6m	Retain
6	Eucalyptus scoparia (Wallangarra White Gum)	17m	Retain
7	Eucalyptus scoparia (Wallangarra White Gum)	8m	Retain
8	Liquidambar styraciflua (Liquidambar)	7m	Retain
9	Allocasuarina torulosa (Rose She-Oak)	7m	Retain
10	Angophora costata (Smooth-barked Apple)	10m	Retain
11	Allocasuarina torulosa (Rose She-Oak)	10m	Retain
12	Allocasuarina torulosa (Rose She-Oak)	8m	Retain
13	Eucalyptus saligna (Sydney Blue Gum)	20m	Retain
14	Eucalyptus tereticornis (Forest Red Gum)	22m	Retain
15	Eucalyptus tereticornis (Forest Red Gum)	21m	Retain
16	Eucalyptus saligna (Sydney Blue Gum)	18m	Retain
17	Callistemon salignus (Willow Bottlebrush)	19m	Retain
18	Allocasuarina torulosa (Rose She-Oak)	7m	Retain
19	Eucalyptus crebra (Narrow-leaved Ironbark)	13m	Retain
20	Allocasuarina torulosa (Rose She-Oak)	10m	Retain
21	Allocasuarina torulosa (Rose She-Oak)	11m	Retain
22	Eucalyptus tereticornis (Forest Red Gum)	18m	Retain
23	Unknown species	9m	Retain
24	Olea europaea (European Olive)	8m	Retain
25	Callistemon salignus (Willow Bottlebrush)	7m	Retain
26	Cedrus deodara (Deodar Cedar)	15m	Retain
27	Jacaranda mimosifolia (Blue Jacaranda)	9m	Retain
28	Jacaranda mimosifolia (Blue Jacaranda)	10m	Retain
29	Jacaranda mimosifolia (Blue Jacaranda)	11m	Retain
30	Jacaranda mimosifolia (Blue Jacaranda)	11m	Retain
31	Jacaranda mimosifolia (Blue Jacaranda)	12m	Retain
32	Hibiscus spp. (Hibiscus)	5m	Retain
33	Callistemon viminalis (Weeping Bottlebrush)	3m	Retain
34	Leptospermum petersonii (Lemon-scented Tea Tree)	6m	Retain
35	Leptospermum petersonii (Lemon-scented Tea Tree)	5m	Retain
36	Leptospermum petersonii (Lemon-scented Tea Tree)	5m	Retain
37	Leptospermum petersonii (Lemon-scented Tea Tree)	5m	Retain
38	Leptospermum petersonii (Lemon-scented Tea Tree)	4m	Retain
39	Leptospermum petersonii (Lemon-scented Tea Tree)	6m	Retain
40	Leptospermum petersonii (Lemon-scented Tea Tree)	6m	Retain
41	Plumeria spp. (Frangipani)	2-3m	Retain
42	Plumeria spp. (Frangipani)	1-2m	Retain
43	Elaeocarpus reticulatus (Blueberry Ash)	7m	Retain
44	Elaeocarpus reticulatus (Blueberry Ash)	8m	Retain
45	Grevillea robusta (Silky Oak)	17m	Retain
46	Brachychiton acerifolius (Illawara Flame Tree)	11m	Retain
47	Unknown species	8m	Retain
48	Stenocarpus sinuatus (Firewheel Tree)	8m	Retain
49	Grevillea robusta (Silky Oak)	19m	Retain
50	Corymbia maculata (Spotted Gum)	17m	Retain
51	Corymbia citriodora (Lemon-scented Gum)	18m	Retain
52	Corymbia maculata (Spotted Gum)	26m	Retain
53	Corymbia maculata (Spotted Gum)	27m	Retain
54	Ligustrum spp. (Privet)	9m	Retain
55	Jacaranda mimosifolia (Blue Jacaranda)	10m	Retain
56	Eucalyptus crebra (Narrow-leaved Ironbark)	16m	Retain
57	Melaleuca quinquenervia (Broad-leaved Paperbark)	6m	Retain
58	Melaleuca quinquenervia (Broad-leaved Paperbark)	7m	Retain
59	Melaleuca quinquenervia (Broad-leaved Paperbark)	7m	Retain
60	Melaleuca quinquenervia (Broad-leaved Paperbark)	5m	Retain
61	Eucalyptus microcarpa (Grey Box)	5m	Retain
62	Eucalyptus microcarpa (Grey Box)	17m	Retain
63	Eucalyptus microcarpa (Grey Box)	19m	Retain
64	Eucalyptus microcarpa (Grey Box)	17m	Retain
65	Eucalyptus microcarpa (Grey Box)	16m	Retain
66	Callistemon viminalis (Weeping Bottlebrush)	4m	Remove
67	Callistemon viminalis (Weeping Bottlebrush)	4m	Remove
68	Acacia implexa (Hickory Wattle)	11m	Remove
69	Callistemon salignus (Willow Bottlebrush)	7m	Remove
70	Callistemon salignus (Willow Bottlebrush)	6m	Remove
71	Corymbia maculata (Spotted Gum)	13m	Retain
72	Schinus molle (Peppercorn Tree)	9m	Retain
73	Schinus molle (Peppercorn Tree)	8m	Retain
74	Eucalyptus tereticornis (Forest Red Gum)	15m	Retain
75	Eucalyptus tereticornis (Forest Red Gum)	14m	Retain
76	Eucalyptus tereticornis (Forest Red Gum)	10m	Retain
77	Eucalyptus paniculata (Grey Ironbark)	15m	Retain
78	Schinus molle (Peppercorn Tree)	3m	Retain
79	Eucalyptus globulus (Tasmanian Blue Gum)	14m	Retain
80	Eucalyptus tereticornis (Forest Red Gum)	12m	Retain
81	Eucalyptus tereticornis (Forest Red Gum)	14m	Retain
82	Eucalyptus tereticornis (Forest Red Gum)	5m	Retain
83	Eucalyptus tereticornis (Forest Red Gum)	17m	Retain
84	Eucalyptus tereticornis (Forest Red Gum)	9m	Retain
85	Eucalyptus crebra (Narrow-leaved Ironbark)	12m	Retain
86	Eucalyptus tereticornis (Forest Red Gum)	12m	Retain
87	Eucalyptus tereticornis (Forest Red Gum)	14m	Retain
88	Eucalyptus tereticornis (Forest Red Gum)	12m	Retain
89	Eucalyptus tereticornis (Forest Red Gum)	19m	Retain
90	Eucalyptus resinifera (Red Mahogany)	23m	Retain
91	Eucalyptus microcarpa (Grey Box)	20m	Retain
92	Eucalyptus microcarpa (Grey Box)	21m	Retain
93	Eucalyptus microcarpa (Grey Box)	20m	Retain
94	Ficus elastica (Rubber Fig)	6m	Retain
95	Eucalyptus paniculata (Grey Ironbark)	17m	Retain
96	Eucalyptus tereticornis (Forest Red Gum)	22m	Retain
97	Eucalyptus paniculata (Grey Ironbark)	17m	Retain
98	Citrus spp (Citrus)	3m	Retain

Tree	Description	Existing Height	Proposed Action
99	Lophostemon confertus (Brush Box)	9m	Retain
100	Unknown species	7m	Retain
101	Syzygium romanzoffiana (Cocos Palm)	7m	Retain
102	Backhousia myrtifolia (Grey Myrtle)	4m	Retain
103	Backhousia myrtifolia (Grey Myrtle)	6m	Retain
104	Ailanthus altissima (Tree of Heaven)	8m	Retain
105	Plumeria spp. (Frangipani)	2m	Retain
106	Citrus spp (Citrus)	3m	Retain
107	Bamboo spp (Bamboo)	3m	Retain
108	Cupressus sempervirens (Mediterranean Cypress)	5m	Retain
109	Ligustrum spp. (Privet)	6m	Retain
110	Grevillea robusta (Silky Oak)	7m	Retain
111	Jacaranda mimosifolia (Blue Jacaranda)	8m	Retain
112	Callistemon viminalis (Weeping Bottlebrush)	11m	Retain
113	Callistemon viminalis (Weeping Bottlebrush)	8m	Retain
114	Leptospermum petersonii (Lemon-scented Tea Tree)	6m	Retain
115	Ligustrum spp. (Privet)	6m	Retain
116	Cinnamomum camphora (Camphor Laurel)	13m	Retain
116a	Melaleuca quinquenervia (Broad-leaved Paperbark)	12m	Retain
117	Morus spp (Mulberry tree)	9m	Retain
118	Hakea spp (Hakea)	7m	Retain
119	Olea europaea (European Olive)	6m	Retain
120	Ficus carica (Common Fig)	6m	Retain
121	Citrus spp (Citrus)	2m	Retain
122	Prunus spp	2m	Retain
123	Prunus spp	2m	Retain
124	Eucalyptus tereticornis (Forest Red Gum)	23m	Retain
124a	Banksia integrifolia (Coast Banksia)	5m	Retain
124b	Callistemon salignus (Willow Bottlebrush)	5m	Retain
125	Quercus robur (English Oak)	10m	Retain
126	Eucalyptus sideroxylon (Mugga Ironbark)	17m	Retain
127	Eucalyptus paniculata (Grey Ironbark)	26m	Retain
128	Eucalyptus tereticornis (Forest Red Gum)	22m	Retain
129	Eucalyptus tereticornis (Forest Red Gum)	22m	Retain
130	Morus spp (Mulberry tree)	10m	Retain
130a	Morus spp (Mulberry tree)	10m	Retain
130b	Leptospermum spp. (Tea Tree)	7m	Retain
131	Lophostemon confertus (Brush Box)	12m	Retain
132	Lophostemon confertus (Brush Box)	12m	Retain
133	Lophostemon confertus (Brush Box)	8m	Retain
134	Casuarina cunninghamiana (River She-Oak)	12m	Retain
135	Corymbia citriodora (Lemon-scented Gum)	14m	Retain
136	Ficus rubiginosa (Port Jackson Fig)	14m	Retain
137	Jacaranda mimosifolia (Blue Jacaranda)	8m	Remove
138	Jacaranda mimosifolia (Blue Jacaranda)	10m	Remove
139	Jacaranda mimosifolia (Blue Jacaranda)	12m	Remove
140	Callistemon viminalis (Weeping Bottlebrush)	8m	Remove
141	Callistemon viminalis (Weeping Bottlebrush)	6m	Remove
142	Eucalyptus tereticornis (Forest Red Gum)	15m	Retain
143	Lophostemon confertus (Brush Box)	6m	Retain
144	Corymbia maculata (Spotted Gum)	20m	Retain
145	Corymbia citriodora (Lemon-scented Gum)	20m	Retain
146	Eucalyptus tereticornis (Forest Red Gum)	13m	Retain
147	Eucalyptus tereticornis (Forest Red Gum)	14m	Retain
148	Eucalyptus spp.	5m	Retain
149	Eucalyptus spp.	4m	Retain
150	Leptospermum petersonii (Lemon-scented Tea Tree)	5m	Retain
151	Eucalyptus sideroxylon (Mugga Ironbark)	6m	Retain
152	Corymbia maculata (Spotted Gum)	10m	Retain
153	Eucalyptus rubida (Candlebark)	14m	Retain
154	Eucalyptus nicholii (Black Peppermint)	8m	Remove
155	Eucalyptus tereticornis (Forest Red Gum)	7m	Remove
156	Corymbia citriodora (Lemon-scented Gum)	14m	Remove
157	Olea europaea (European Olive)	6m	Retain
158	Grevillea robusta (Silky Oak)	18m	Retain
159	Callistemon viminalis (Weeping Bottlebrush)	7m	Retain
160	Camellia spp. (Camellia)	2m	Retain
161	Platanus x acerifolius (London Plane Tree)	14m	Retain
162	Platanus x acerifolius (London Plane Tree)	13m	Retain
163	Livistonia chinensis (Chinese Fan Palm)	9m	Retain
164	Camellia spp. (Camellia)	2m	Retain
165	Callistemon viminalis (Weeping Bottlebrush)	6m	Retain
166	Callistemon viminalis (Weeping Bottlebrush)	6m	Retain
167	Callistemon viminalis (Weeping Bottlebrush)	6m	Retain
168	Jacaranda mimosifolia (Blue Jacaranda)	-	Retain
169	Prunus spp	3m	Retain
170	Camellia spp. (Camellia)	3m	Retain
171	Camellia spp. (Camellia)	4m	Retain
172	Brachychiton acerifolius (Illawara Flame Tree)	10m	Retain
173	Camellia spp. (Camellia)	5m	Retain
174	Prunus spp	2m	Retain
175	Cupaniopsis anacardioides (Tuckeroo)	6m	Retain
176	Lophostemon confertus (Brush Box)	6m	Retain
177	Cupaniopsis anacardioides (Tuckeroo)	6m	Retain
178	Casuarina cunninghamiana (River She-Oak)	8m	Retain

LANDSCAPE ARCHITECT

GROUND iNK

SUITE 201, 75 ARCHER ST, CHATSWOOD NSW 2067 PH. (02) 9411 3279
WWW.GROUNDINK.COM.AU ABN 55 163 025 456 ACN 163 025 456
© GROUND INK PTY LTD THIS DESIGN AND DRAWING IS PROTECTED BY COPYRIGHT.

CLIENT

Education

ARCHITECT

FULTON TROTTER ARCHITECTS
LEVEL 3/35 SPRING ST BONDJUNCTION
NSW 2022 PH. (02) 8383 5151
WWW.FULTONTROTTER.COM.AU/

PROJECT MANAGER
TSAMGT MANAGEMENT
LEVEL 15/207 KENT ST, SYDNEY
NSW 2000 PH. (02) 9276 1400
HTTPS://WWW.TSAMGT.COM/

ENGINEER

AURECON GROUP
5/116 MILITARY RD, NEUTRAL BAY NSW
2089 PH. (02) 9445 5599
HTTPS://WWW.AURECONGROUP.COM/

NOTE
VERIFY ALL DIMENSIONS ON SITE BEFORE COMMENCING WORK.
REPORT ALL DISCREPANCIES TO LANDSCAPE ARCHITECT PRIOR TO CONSTRUCTION. FIGURED DIMENSIONS TO BE TAKEN IN PREFERENCE TO SCALED DRAWINGS. ALL WORK IS TO CONFORM TO RELEVANT AUSTRALIAN STANDARDS AND OTHER CODES AS APPLICABLE. LOCATION OF UNDERGROUND SERVICES TO BE PROVEN ON SITE AND PROTECTED IF NECESSARY PRIOR TO CONSTRUCTION. DIAL BEFORE YOU DIG. PLANT SPECIES AND QUANTITIES SHOWN ARE INDICATIVE ONLY AND ARE SUBJECT TO CHANGE BASED ON FUTURE PROJECT REQUIREMENTS.

ISSUE	DATE	DESCRIPTION	DRAWN	CHECKED
DRAFT	24.02.21	DRAFT ISSUE	KF	RL
DRAFT	02.03.21	DRAFT ISSUE	ML	RL
DRAFT	09.03.21	DRAFT ISSUE	ML	RL
A	25.03.21	FOR DA	ML	RL
B	26.03.21	FOR DA	ML	RL
C	30.03.21	FOR DA	ML	RL
D	30.04.21	ISSUE FOR SD	ML	RL
E	04.05.21	ISSUE FOR SSDA	ML	RL

DRAWING TITLE

EXISTING TREE PLAN

DA DOCUMENTATION

DATE
04-May-21

JOB NUMBER
20200902

DRAWN
ML

CHECKED
RL

DRAWING NUMBER
LDA-001

PROJECT
PENDLE HILL HIGH SCHOOL
PENDLE HILL NSW 2145

SCALE
1:750 @ A1

REVISION
E




LANDSCAPE ARCHITECT

GROUND INK

SUITE 201, 75 ARCHER ST, CHATSWOOD NSW 2067 PH. (02) 9411 3279
WWW.GROUNDINK.COM.AU ABN 55 163 025 456 ACN 163 025 456

© GROUND INK PTY LTD THIS DESIGN AND DRAWING IS PROTECTED BY COPYRIGHT.

CLIENT



Education

GPO BOX 33, SYDNEY NSW 2001
PH. 1300 679 332
WWW.EDUCATION.NSW.GOV.AU/

ARCHITECT

FULTON TROTTER ARCHITECTS

LEVEL 3/35 SPRING ST, BONDI JUNCTION
NSW 2022 PH. (02) 8383 5151
WWW.FULTONTROTTER.COM.AU/

PROJECT MANAGER

TSA MANAGEMENT

LEVEL 15/207 KENT ST, SYDNEY
NSW 2000 PH. (02) 9276 1400
HTTPS://WWW.TSAMGT.COM/

ENGINEER

AURECON GROUP

5/116 MILITARY RD, NEUTRAL BAY NSW
2089 PH. (02) 9465 5599
HTTPS://WWW.AURECONGROUP.COM/

NOTE

VERIFY ALL DIMENSIONS ON SITE BEFORE COMMENCING WORK.
REPORT ALL DISCREPANCIES TO LANDSCAPE ARCHITECT PRIOR TO
CONSTRUCTION. FIGURED DIMENSIONS TO BE TAKEN IN PREFERENCE
TO SCALED DRAWINGS. ALL WORK IS TO CONFORM TO RELEVANT
AUSTRALIAN STANDARDS AND OTHER CODES AS APPLICABLE. LOCATION
OF UNDERGROUND SERVICES TO BE PROVEN ON SITE AND PROTECTED.
IF NECESSARY PRIOR TO CONSTRUCTION, DIAL BEFORE YOU DIG. PLANT
SPECIES AND QUANTITIES SHOWN ARE INDICATIVE ONLY AND ARE SUBJECT
TO CHANGE BASED ON FUTURE PROJECT REQUIREMENTS.

ISSUE	DATE	DESCRIPTION	DRAWN	CHECKED
DRAFT	24.02.21	DRAFT ISSUE	KF	RL
DRAFT	02.03.21	DRAFT ISSUE	ML	RL
DRAFT	09.03.21	DRAFT ISSUE	ML	RL
A	25.03.21	FOR DA	ML	RL
B	26.03.21	FOR DA	ML	RL
C	30.03.21	FOR DA	ML	RL
D	30.04.21	ISSUE FOR SD	ML	RL
E	04.05.21	ISSUE FOR SSDA	ML	RL

DRAWING TITLE

CANOPY COVERAGE PLAN

DATE	JOB NUMBER	DRAWN	CHECKED	DRAWING NUMBER
04-May-21	20200902	ML	RL	LDA-002

PROJECT

PENDLE HILL HILL SCHOOL

PENDLE HILL NSW 2145

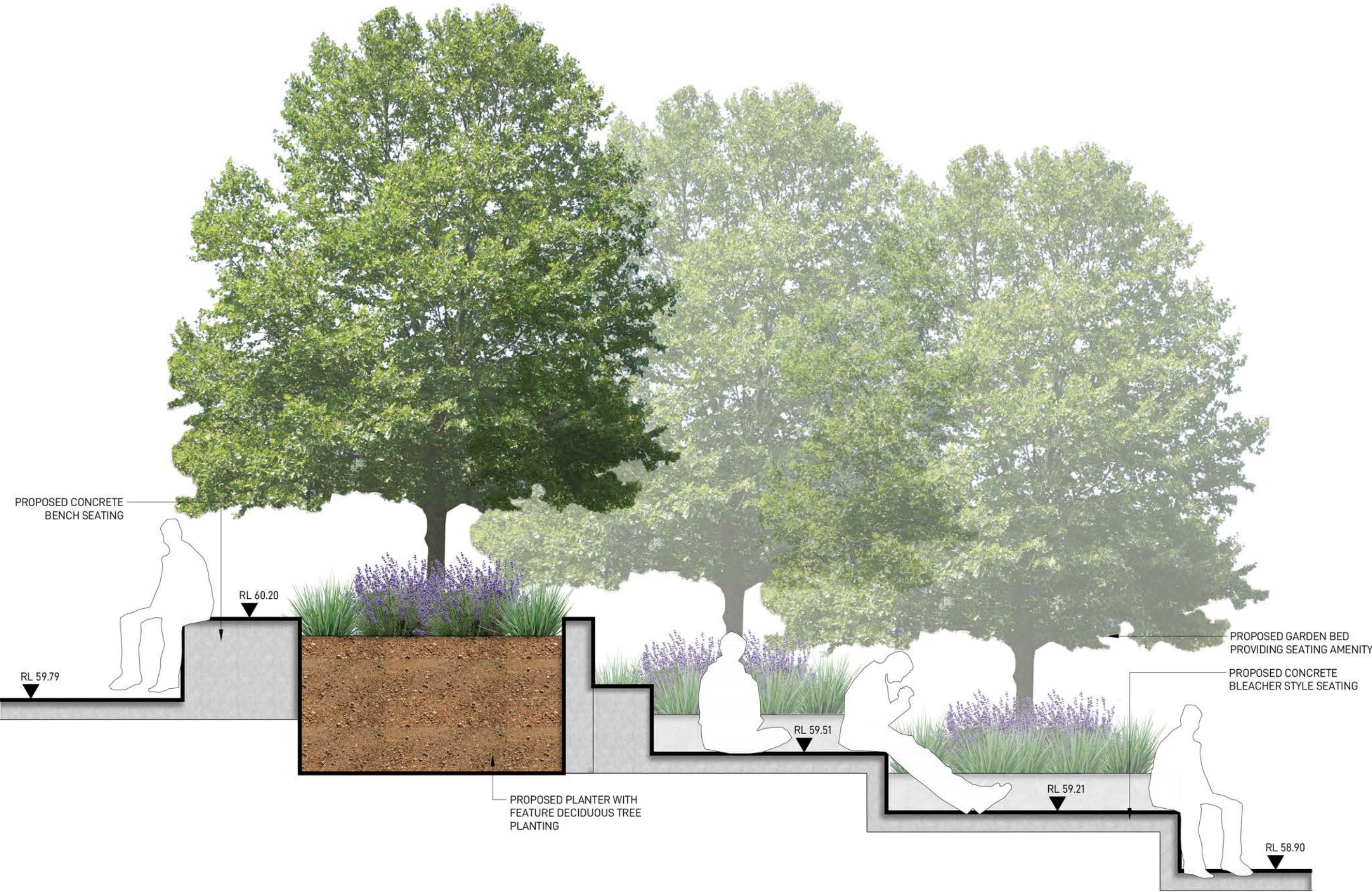
SCALE 1:200 @ A1

0 25 50 75 100m

REVISION

E

KEY PLAN




SECTION A-A



INDICATIVE RENDER 1

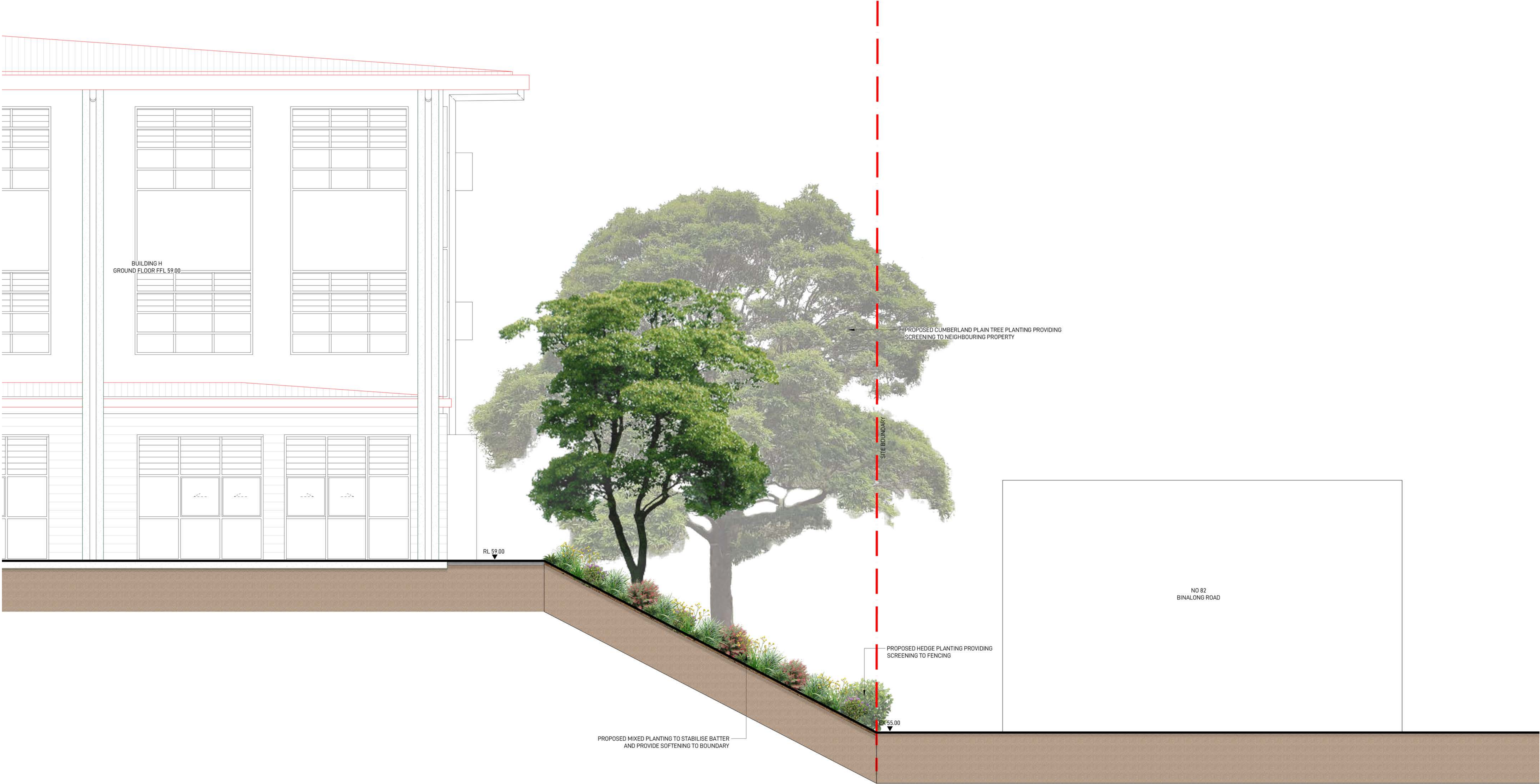
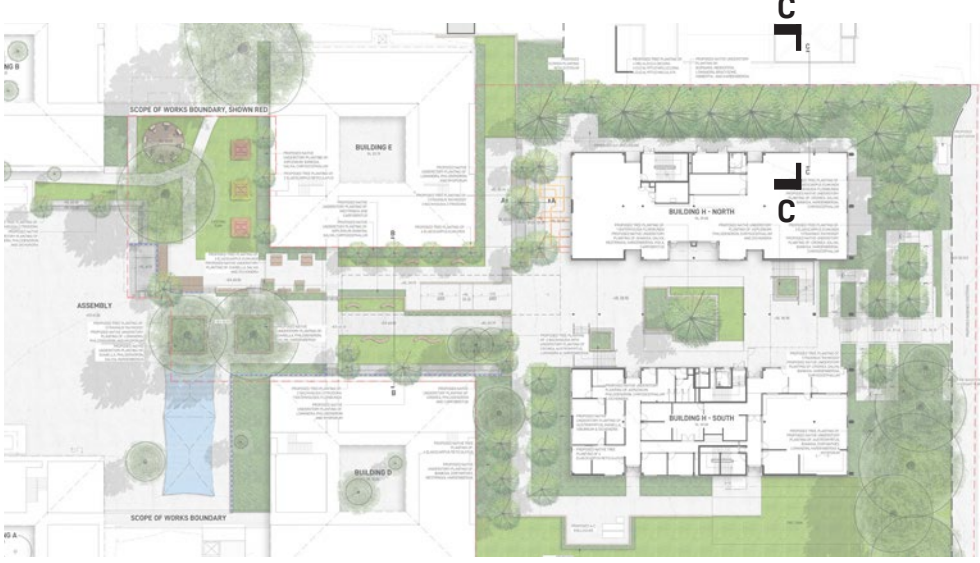


INDICATIVE RENDER 2

LANDSCAPE ARCHITECT		CLIENT		ARCHITECT		ENGINEER		NOTE		ISSUE		DATE		DESCRIPTION		DRAWN		CHECKED		DRAWING TITLE													
<div>GROUND iNK</div> <div>SUITE 201, 75 ARCHER ST, CHATSWOOD NSW 2067 PH. (02) 9411 3279 WWW.GROUNDINK.COM.AU ABN 55 163 025 456 ACN 163 025 456 © GROUND INK PTY LTD THIS DESIGN AND DRAWING IS PROTECTED BY COPYRIGHT.</div>		<div> Education</div> <div>GPO BOX 33, SYDNEY NSW 2001 PH. 1300 679 332 WWW.EDUCATION.NSW.GOV.AU/</div>		<div>FULTON TROTTER ARCHITECTS</div> <div>LEVEL 3/35 SPRING ST, BONDI JUNCTION NSW 2022 PH. (02) 8383 5151 WWW.FULTONTROTTER.COM.AU/</div>		<div>AURECON GROUP</div> <div>5/116 MILITARY RD, NEUTRAL BAY NSW 2089 PH. (02) 9465 5599 HTTPS://WWW.AURECONGROUP.COM/</div>		VERIFY ALL DIMENSIONS ON SITE BEFORE COMMENCING WORK. REPORT ALL DISCREPANCIES TO LANDSCAPE ARCHITECT PRIOR TO CONSTRUCTION. FIGURED DIMENSIONS TO BE TAKEN IN PREFERENCE TO SCALED DRAWINGS. ALL WORK IS TO CONFORM TO RELEVANT AUSTRALIAN STANDARDS AND OTHER CODES AS APPLICABLE. LOCATION OF UNDERGROUND SERVICES TO BE PROVEN ON SITE AND PROTECTED IF NECESSARY PRIOR TO CONSTRUCTION. DIAL BEFORE YOU DIG. PLANT SPECIES AND QUANTITIES SHOWN ARE INDICATIVE ONLY AND ARE SUBJECT TO CHANGE BASED ON FUTURE PROJECT REQUIREMENTS.		DRAFT		24.02.21		DRAFT ISSUE		KF		RL		DRAWING TITLE													
										DRAFT		02.03.21		DRAFT ISSUE		ML		RL															
										DRAFT		09.03.21		DRAFT ISSUE		ML		RL															
										A		25.03.21		FOR DA		ML		RL															
										B		26.03.21		FOR DA		ML		RL															
										C		30.03.21		FOR DA		ML		RL															
										D		30.04.21		ISSUE FOR SD		ML		RL															
										E		04.05.21		ISSUE FOR SSDA		ML		RL															
										LANDSCAPE SECTIONS 1																							
										DATE		JOB NUMBER		DRAWN		CHECKED		DRAWING NUMBER				PROJECT		SCALE		1:20 @ A1		REVISION					
04-May-21		20200902		ML		RL		LDA-004		PENDLE HILL HILL HIGH SCHOOL PENDLE HILL NSW 2145		0		0.25		0.5		0.75		1m		E											



KEY PLAN



LANDSCAPE ARCHITECT

GROUND **ink**

SUITE 201, 75 ARCHER ST, CHATSWOOD NSW 2067 PH. (02) 9411 3279
WWW.GROUNDINK.COM.AU ABN 55 163 025 456 ACN 163 025 456
© GROUND INK PTY LTD THIS DESIGN AND DRAWING IS PROTECTED BY COPYRIGHT.

NSW GOVERNMENT

Education

GPO BOX 33, SYDNEY NSW 2001
PH. 1300 679 332
WWW.EDUCATION.NSW.GOV.AU/

CLIENT

FULTON TROTTER ARCHITECTS

LEVEL 3/35 SPRING ST, BONDI JUNCTION
NSW 2022 PH. (02) 8383 5151
WWW.FULTONTROTTER.COM.AU/

PROJECT MANAGER

TSA MANAGEMENT

LEVEL 15/207 KENT ST, SYDNEY
NSW 2000 PH. (02) 9276 1400
HTTPS://WWW.TSAMGT.COM/

ENGINEER

AURECON GROUP

5/116 MILITARY RD, NEUTRAL BAY NSW 2089 PH. (02) 9465 5599
HTTPS://WWW.AURECONGROUP.COM/

NOTE

VERIFY ALL DIMENSIONS ON SITE BEFORE COMMENCING WORK.
REPORT ALL DISCREPANCIES TO LANDSCAPE ARCHITECT PRIOR TO CONSTRUCTION. FIGURED DIMENSIONS TO BE TAKEN IN PREFERENCE TO SCALED DRAWINGS. ALL WORK IS TO CONFORM TO RELEVANT AUSTRALIAN STANDARDS AND OTHER CODES AS APPLICABLE. LOCATION OF UNDERGROUND SERVICES TO BE PROVEN ON SITE AND PROTECTED IF NECESSARY PRIOR TO CONSTRUCTION. DIAL BEFORE YOU DIG. PLANT SPECIES AND QUANTITIES SHOWN ARE INDICATIVE ONLY AND ARE SUBJECT TO CHANGE BASED ON FUTURE PROJECT REQUIREMENTS.

ISSUE	DATE	DESCRIPTION	DRAWN	CHECKED
DRAFT	24.02.21	DRAFT ISSUE	KF	RL
DRAFT	02.03.21	DRAFT ISSUE	ML	RL
DRAFT	09.03.21	DRAFT ISSUE	ML	RL
A	25.03.21	FOR DA	ML	RL
B	26.03.21	FOR DA	ML	RL
C	30.03.21	FOR DA	ML	RL
D	30.04.21	ISSUE FOR SD	ML	RL
E	04.05.21	ISSUE FOR SSDA	ML	RL

DRAWING TITLE

LANDSCAPE SECTIONS 3

DATE	JOB NUMBER	DRAWN	CHECKED	DRAWING NUMBER
04-May-21	20200902	ML	RL	LDA-006

PROJECT

PENDLE HILL HIGH SCHOOL

PENDLE HILL NSW 2145

SCALE 1:50 @ A1

0 0.5 1 1.5 2m

REVISION

E



DA DOCUMENTATION


LANDSCAPE ARCHITECT

GROUND INK

SUITE 201, 75 ARCHER ST, CHATSWOOD NSW 2067 PH. (02) 9411 3279
WWW.GROUNDINK.COM.AU ABN 55 163 025 456 ACN 163 025 456

© GROUND INK PTY LTD THIS DESIGN AND DRAWING IS PROTECTED BY COPYRIGHT.

CLIENT



NSW
GOVERNMENT

Education

GPO BOX 33, SYDNEY NSW 2001
PH. 1300 679 332
WWW.EDUCATION.NSW.GOV.AU/

ARCHITECT

FULTON TROTTER ARCHITECTS
LEVEL 3/35 SPRING ST, BONDI JUNCTION
NSW 2022 PH. (02) 8383 3151
WWW.FULTONTROTTER.COM.AU/

PROJECT MANAGER
TSAMGT SYDNEY
LEVEL 15/207 KENT ST SYDNEY
NSW 2000 PH. (02) 9276 1400
HTTPS://WWW.TSAMGT.COM/

ENGINEER

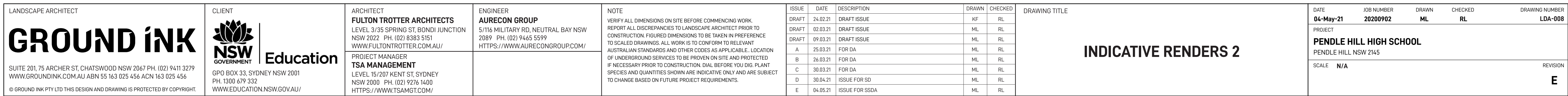
AURECON GROUP
5/116 MILITARY RD, NEUTRAL BAY NSW
2089 PH. (02) 9465 5599
HTTPS://WWW.AURECONGROUP.COM/

NOTE

VERIFY ALL DIMENSIONS ON SITE BEFORE COMMENCING WORK. REPORT ALL DISCREPANCIES TO LANDSCAPE ARCHITECT PRIOR TO CONSTRUCTION. FIGURED DIMENSIONS TO BE TAKEN IN PREFERENCE TO SCALED DRAWINGS. ALL WORK IS TO CONFORM TO RELEVANT AUSTRALIAN STANDARDS AND OTHER CODES AS APPLICABLE. LOCATION OF UNDERGROUND SERVICES TO BE PROVEN ON SITE AND PROTECTED IF NECESSARY PRIOR TO CONSTRUCTION DIAL BEFORE YOU DIG. PLANT SPECIES AND QUANTITIES SHOWN ARE INDICATIVE ONLY AND ARE SUBJECT TO CHANGE BASED ON FUTURE PROJECT REQUIREMENTS.

ISSUE	DATE	DESCRIPTION	DRAWN	CHECKED
DRAFT	24.02.21	DRAFT ISSUE	KF	RL
DRAFT	02.03.21	DRAFT ISSUE	ML	RL
DRAFT	07.03.21	DRAFT ISSUE	ML	RL
A	25.03.21	FOR DA	ML	RL
B	26.03.21	FOR DA	ML	RL
C	30.03.21	FOR DA	ML	RL
D	30.04.21	ISSUE FOR SD	ML	RL
E	04.05.21	ISSUE FOR SSDA	ML	RL

DRAWING TITLE	DATE	JOB NUMBER	DRAWN	CHECKED	DRAWING NUMBER
INDICATIVE RENDERERS 1	04-May-21	20200902	ML	RL	LDA-007
	PROJECT				
	PENDLE HILL HIGH SCHOOL PENDLE HILL NSW 2145				
SCALE	N/A				REVISION
					E






LANDSCAPE ARCHITECT

GROUND iNK

SUITE 201, 75 ARCHER ST, CHATSWOOD NSW 2067 PH. (02) 9411 3279
WWW.GROUNDINK.COM.AU ABN 55 163 025 456 ACN 163 025 456

© GROUND iNK PTY LTD THIS DESIGN AND DRAWING IS PROTECTED BY COPYRIGHT.

CLIENT



Education

GPO BOX 33, SYDNEY NSW 2001
PH. 1300 679 332
WWW.EDUCATION.NSW.GOV.AU/

ARCHITECT

FULTON TROTTER ARCHITECTS

LEVEL 3/35 SPRING ST, BONDI JUNCTION
NSW 2022 PH. (02) 8383 5151
WWW.FULTONTROTTER.COM.AU/

ENGINEER

AURECON GROUP

5/116 MILITARY RD, NEUTRAL BAY NSW
2089 PH. (02) 9465 5599
HTTPS://WWW.AURECONGROUP.COM/

NOTE

VERIFY ALL DIMENSIONS ON SITE BEFORE COMMENCING WORK.
REPORT ALL DISCREPANCIES TO LANDSCAPE ARCHITECT PRIOR TO CONSTRUCTION. FIGURED DIMENSIONS TO BE TAKEN IN PREFERENCE TO SCALED DRAWINGS. ALL WORK IS TO CONFORM TO RELEVANT AUSTRALIAN STANDARDS AND OTHER CODES AS APPLICABLE. LOCATION OF UNDERGROUND SERVICES TO BE PROVEN ON SITE AND PROTECTED IF NECESSARY PRIOR TO CONSTRUCTION. DIAL BEFORE YOU DIG. PLANT SPECIES AND QUANTITIES SHOWN ARE INDICATIVE ONLY AND ARE SUBJECT TO CHANGE BASED ON FUTURE PROJECT REQUIREMENTS.

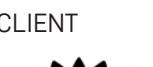
ISSUE	DATE	DESCRIPTION	DRAWN	CHECKED
DRAFT	24.02.21	DRAFT ISSUE	KF	RL
DRAFT	02.03.21	DRAFT ISSUE	ML	RL
DRAFT	09.03.21	DRAFT ISSUE	ML	RL
A	25.03.21	FOR DA	ML	RL
B	26.03.21	FOR DA	ML	RL
C	30.03.21	FOR DA	ML	RL
D	30.04.21	ISSUE FOR SD	ML	RL
E	04.05.21	ISSUE FOR SSDA	ML	RL

DRAWING TITLE

INDICATIVE RENDERS 3

DATE	JOB NUMBER	DRAWN	CHECKED	DRAWING NUMBER
04-May-21	20200902	ML	RL	LDA-009
PROJECT				
PENDLE HILL HILL SCHOOL PENDLE HILL NSW 2145				
SCALE N/A				REVISION
				E



DA DOCUMENTATION																	
<div>LANDSCAPE ARCHITECT</div> <div>GROUND iNK</div> <div>SUITE 201, 75 ARCHER ST, CHATSWOOD NSW 2067 PH. (02) 9411 3279 WWW.GROUNDINK.COM.AU ABN 55 163 025 456 ACN 163 025 456</div> <div>© GROUND INK PTY LTD THIS DESIGN AND DRAWING IS PROTECTED BY COPYRIGHT.</div>	<div>CLIENT</div> <div> Education</div> <div>GPO BOX 33, SYDNEY NSW 2001 PH. 1300 679 332 WWW.EDUCATION.NSW.GOV.AU/</div>	<div>ARCHITECT</div> <div>FULTON TROTTER ARCHITECTS</div> <div>LEVEL 3/35 SPRING ST, BONDI JUNCTION NSW 2022 PH. (02) 8383 5151 WWW.FULTONTROTTER.COM.AU/</div> <div>PROJECT MANAGER</div> <div>TSA MANAGEMENT</div> <div>LEVEL 15/207 KENT ST, SYDNEY NSW 2000 PH. (02) 9276 1400 HTTPS://WWW.TSAMGT.COM/</div>	<div>ENGINEER</div> <div>AURECON GROUP</div> <div>5/116 MILITARY RD, NEUTRAL BAY NSW 2089 PH. (02) 9465 5599 HTTPS://WWW.AURECONGROUP.COM/</div>	<div>NOTE</div> <div>VERIFY ALL DIMENSIONS ON SITE BEFORE COMMENCING WORK. REPORT ALL DISCREPANCIES TO LANDSCAPE ARCHITECT PRIOR TO CONSTRUCTION. FIGURED DIMENSIONS TO BE TAKEN IN PREFERENCE TO SCALED DRAWINGS. ALL WORK IS TO CONFORM TO RELEVANT AUSTRALIAN STANDARDS AND OTHER CODES AS APPLICABLE. LOCATION OF UNDERGROUND SERVICES TO BE PROVEN ON SITE AND PROTECTED IF NECESSARY PRIOR TO CONSTRUCTION. DIAL BEFORE YOU DIG. PLANT SPECIES AND QUANTITIES SHOWN ARE INDICATIVE ONLY AND ARE SUBJECT TO CHANGE BASED ON FUTURE PROJECT REQUIREMENTS.</div>	ISSUE	DATE	DESCRIPTION	DRAWN	CHECKED	DRAWING TITLE	DATE	JOB NUMBER	DRAWN	CHECKED	DRAWING NUMBER		
					DRAFT	24.02.21	DRAFT ISSUE	KF	RL		INDICATIVE RENDERS 4	04-May-21	20200902	ML	RL	LDA-010	
					DRAFT	02.03.21	DRAFT ISSUE		ML								RL
					DRAFT	09.03.21	DRAFT ISSUE		ML								RL
					A	25.03.21	FOR DA		ML								RL
B	26.03.21	FOR DA		ML	RL												
C	30.03.21	FOR DA		ML	RL	PROJECT PENDLE HILL HIGH SCHOOL PENDLE HILL NSW 2145	SCALE	N/A	REVISION	E							
D	30.04.21	ISSUE FOR SD		ML	RL												
E	04.05.21	ISSUE FOR SSDA		ML	RL												

TREES



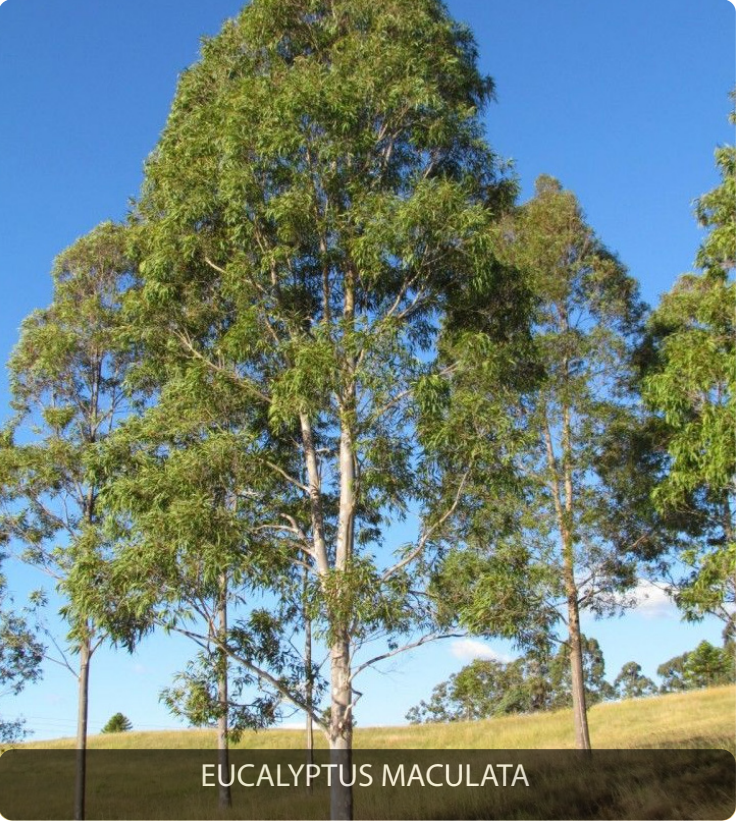
BACKHOUSIA CITRIODORA



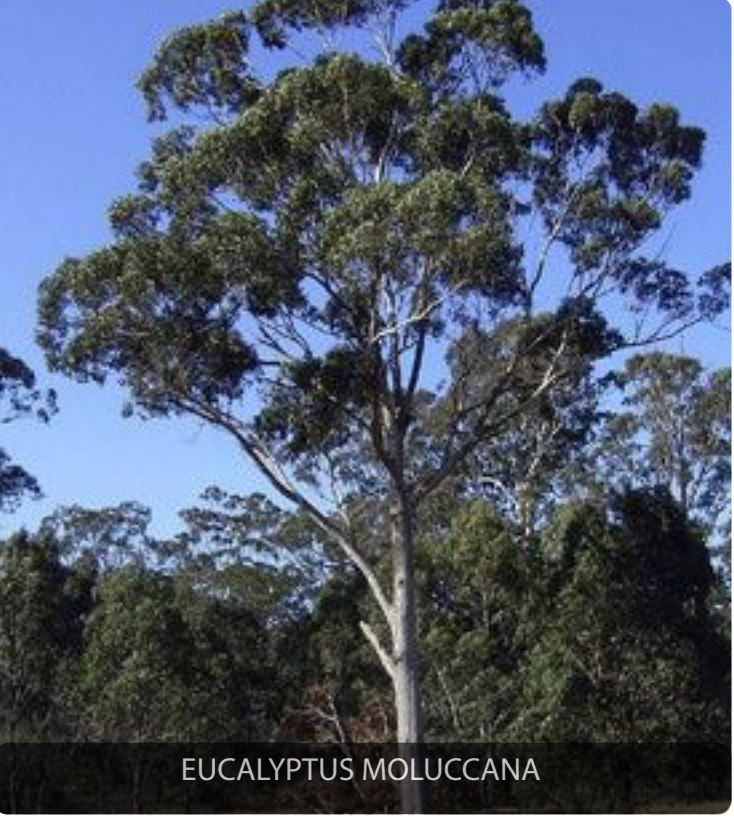
ELAEOCARPUS EUMUNDII



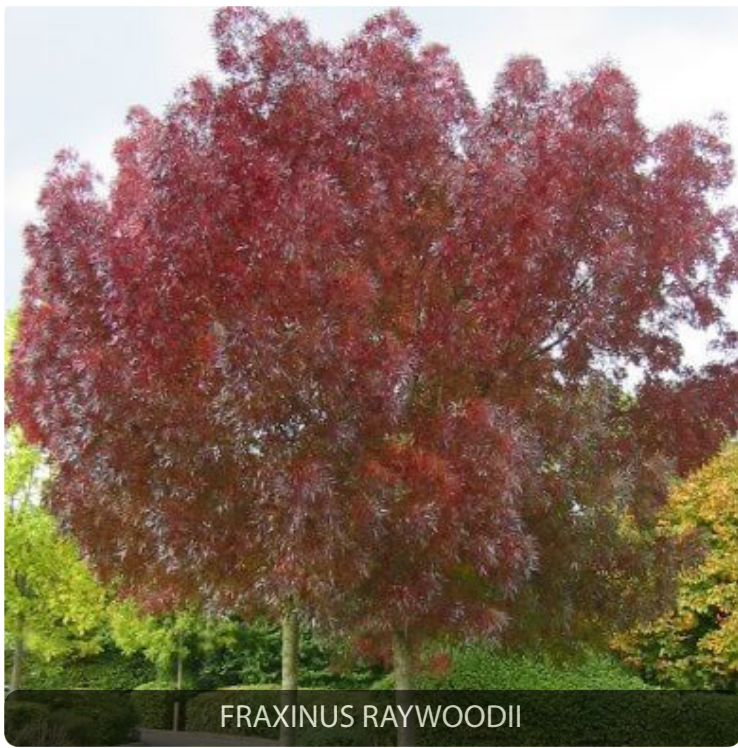
ELAEOCARPUS RETICULATUS



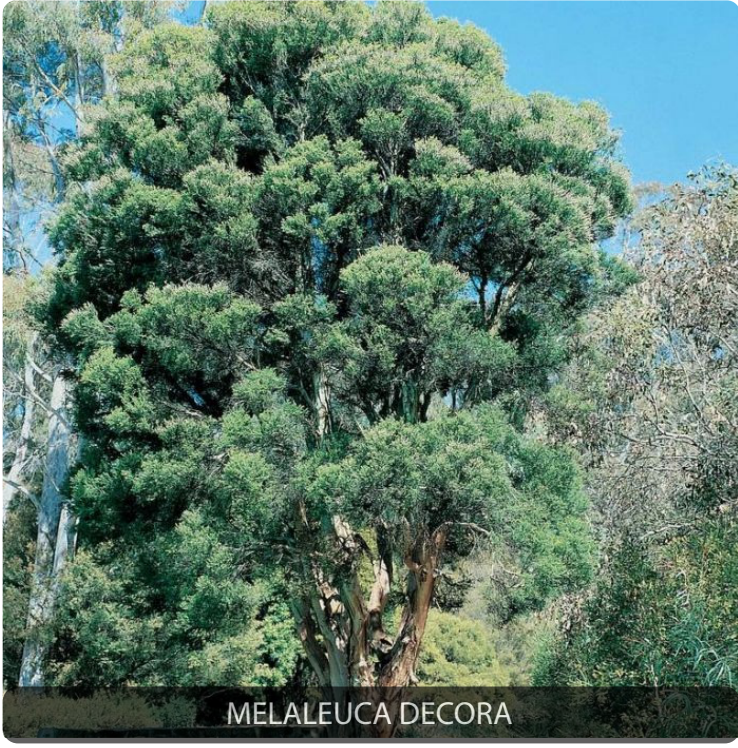
EUCALYPTUS MACULATA



EUCALYPTUS MOLUCCANA



FRAXINUS RAYWOODII



MELALEUCA DECORA



WATERHOUSIA FLORIBUNDA

SHRUBS



ADENANTHOS 'SILVER LINING'



ASPLENIUM NIDUS



AUSTROMYRTUS DULCIS



BANKSIA SPINULOSA



BURSARIA SPINOSA



CROWEA EXALATA



DIANELLA LONGIFOLIA



DORYANTHES EXCELSA



INDIGOFERA AUSTRALIS



LOMANDRA FILIFORMIS



LOMANDRA 'LIME TUFF'



PHILODENDRON 'LITTLE PHIL'



SALVIA 'SANTA BARBARA'



SYZYGIIUM 'AUSTRALE'



VIBURNUM 'DENSE FENCE'



WESTRINGIA 'GREY BOX'

GROUNDCOVERS



BRACYSCOME MULTIFIDA



CARPOBROTUS GLAUDESCENS



CHRYSOCEPHALUM APICULATUM



DICHONDRA REPENS



HIBBERTIA SCANDENS



HARDENBERGIA VIOLACEA




MYOPORUM PARVIFOLIUM



VIOLA HEDERACEA

INDICATIVE PLANT PALETTE

PLANT NAME	EXPECTED MATURE HEIGHT	POT SIZE	ENDEMIC TO CUMBERLAND PLAIN	NATIVE
TREES				
BACKHOUSIA CITRIODORA (LEMON MYRTLE)	10M	200L		✓
ELAEOCARPUS EUMUNDII (QUANDONG)	10M	200L		✓
ELAEOCARPUS RETICULATUS (BLUEBERRY ASH)	12M	400L		✓
EUCALYPTUS MACULATA (SPOTTED GUM)	30M	400L	✓	✓
EUCALYTPUS MOLUCCANA (GREY BOX)	25M	400L	✓	✓
FRAXINUS 'RAYWOODII'	12M	200L		
MELALEUCA DECORA (WHITE FEATHER HONEYMYRTL)	7M	400L	✓	✓
WATERHOUSIA FLORIBUNDA (WEEPING LILLY)	8M	400L		✓
SHRUBS				
ADENANTHOS 'SILVER LINING'	3M	200MM		✓
ASPLENIUM NIDUS (BIRDS NEST FERN)	0.6M	200MM		✓
AUSTROMYRTUS DULCIS (MIDGEN BERRY)	0.5M	200MM		✓
BANKSIA SPINULOSA (COASTAL BANKSIA)	2M	200MM	✓	✓
BURSARIA SPINOSA (SWEET BURSARIA)	3M	200MM	✓	✓
CROWEA EXALATA (WAXFLOWER)	0.4M	200MM		✓
DIANELLA LONGIFOLIA (BLUE FLAX LILY)	0.6M	200MM	✓	✓
DORYANTHES EXCELSA (GYMEA LILY)	4M	300MM		✓
INDIGOFERA AUSTRALIS (AUSTRALIAN INDIGO)	2.5M	300MM	✓	✓
LOMANDRA FILIFORMIS	0.5M	200MM	✓	✓
LOMANDRA 'LIME TUFF'	0.6M	200MM		✓
PHILODENDRON 'LITTLE PHIL'	0.4M	200MM		
SALVIA 'SANTA BARBARA'	0.9M	200MM		
SYZYGIIUM 'AUSTRALE'	5M	300MM	✓	✓
VIBURNUM 'DENSE FENCE'	2.5M	300MM		
WESTRINGIA 'GREY BOX'	0.6M	200MM		✓
GROUNDCOVERS				
BRACYSCOME MULTIFIDA (ROCK LILY)	0.3M	150MM		✓
CARPOBROTUS GLAUDESCENS (PIGFACE)	0.3M	150MM		✓
CHRYSOCEPHALUM APICULATUM (YELLOW BUTTONS)	0.4M	150MM		✓
DICHONDRA REPENS (KIDNEY PLANT)	0.2M	150MM	✓	✓
HIBBERTIA SCANDENS	0.2M	150MM	✓	✓
HARDENBERGIA VIOLACEA (NATIVE SARSPRILLA)	0.4M	150MM	✓	✓
MYOPORUM PARVIFOLIUM (CREEPING BOOBIALLA)	0.3M	150MM	✓	✓
VIOLA HEDERACEA	0.2M	150MM		

<div>LANDSCAPE ARCHITECT</div> <div>GROUND iNK</div> <div>SUITE 201, 75 ARCHER ST, CHATSWOOD NSW 2067 PH. (02) 9411 3279 WWW.GROUNDINK.COM.AU ABN 55 163 025 456 ACN 163 025 456</div> <div>© GROUND INK PTY LTD THIS DESIGN AND DRAWING IS PROTECTED BY COPYRIGHT.</div>	<div>CLIENT</div> <div> Education</div> <div>GPO BOX 33, SYDNEY NSW 2001 PH. 1300 679 332 WWW.EDUCATION.NSW.GOV.AU/</div>	<div>ARCHITECT</div> <div>FULTON TROTTER ARCHITECTS</div> <div>LEVEL 3/35 SPRING ST, BONDI JUNCTION NSW 2022 PH. (02) 8383 5151 WWW.FULTONTROTTER.COM.AU/</div> <div>PROJECT MANAGER</div> <div>TSA MANAGEMENT</div> <div>LEVEL 15/207 KENT ST, SYDNEY NSW 2000 PH. (02) 9276 1400 HTTPS://WWW.TSAMGT.COM/</div>	<div>ENGINEER</div> <div>AURECON GROUP</div> <div>5/116 MILITARY RD, NEUTRAL BAY NSW 2089 PH. (02) 9465 5599 HTTPS://WWW.AURECONGROUP.COM/</div>	<div>NOTE</div> <div>VERIFY ALL DIMENSIONS ON SITE BEFORE COMMENCING WORK. REPORT ALL DISCREPANCIES TO LANDSCAPE ARCHITECT PRIOR TO CONSTRUCTION. FIGURED DIMENSIONS TO BE TAKEN IN PREFERENCE TO SCALED DRAWINGS. ALL WORK IS TO CONFORM TO RELEVANT AUSTRALIAN STANDARDS AND OTHER CODES AS APPLICABLE. LOCATION OF UNDERGROUND SERVICES TO BE PROVEN ON SITE AND PROTECTED IF NECESSARY PRIOR TO CONSTRUCTION. DIAL BEFORE YOU DIG. PLANT SPECIES AND QUANTITIES SHOWN ARE INDICATIVE ONLY AND ARE SUBJECT TO CHANGE BASED ON FUTURE PROJECT REQUIREMENTS.</div>	<div>ISSUE</div> <div>DATE</div> <div>DESCRIPTION</div> <div>DRAWN</div> <div>CHECKED</div>	<div>DRAWING TITLE</div> <div>INDICATIVE PLANT PALETTE</div>	<div>DATE</div> <div>04-May-21</div> <div>JOB NUMBER</div> <div>20200902</div> <div>DRAWN</div> <div>ML</div> <div>CHECKED</div> <div>RL</div> <div>DRAWING NUMBER</div> <div>LDA-011</div>	
					<div>DRAFT</div> <div>24.02.21</div> <div>DRAFT ISSUE</div> <div>KF</div> <div>RL</div>			
					<div>DRAFT</div> <div>02.03.21</div> <div>DRAFT ISSUE</div> <div>ML</div> <div>RL</div>			
					<div>DRAFT</div> <div>09.03.21</div> <div>DRAFT ISSUE</div> <div>ML</div> <div>RL</div>			
					<div>A</div> <div>25.03.21</div> <div>FOR DA</div> <div>ML</div> <div>RL</div>			
					<div>B</div> <div>26.03.21</div> <div>FOR DA</div> <div>ML</div> <div>RL</div>			
					<div>C</div> <div>30.03.21</div> <div>FOR DA</div> <div>ML</div> <div>RL</div>			
					<div>D</div> <div>30.04.21</div> <div>ISSUE FOR SD</div> <div>ML</div> <div>RL</div>			
					<div>E</div> <div>04.05.21</div> <div>ISSUE FOR SSDA</div> <div>ML</div> <div>RL</div>			