

# Pendle Hill High School

## Works notification

Friday 3 February 2023

School Infrastructure NSW is upgrading Pendle Hill High School to bring students new and improved facilities and support the growing student community.

### Temporary road closures: Friday 10 February – Sunday 12 March 2023

As previously notified, public domain upgrades are underway around Pendle Hill High School to improve pedestrian and vehicle access to the school.

To finish these works, it is necessary to undertake temporary partial road closures during February and March 2023. These road closures will be scheduled out of hours, 5 pm Fridays to 3 pm Sundays on the following dates:

- Binalong Road - Friday 10 to Sunday 12 February 2023
- Burrabogee Road and Knox Street - Friday 24 to Sunday 26 February 2023
- Bungaree Road and Cornock Avenue - Friday 10 to Sunday 12 March 2023

### Access arrangements for local residents

One-way access will remain open for residential driveways and pedestrians only during this time.

Access to the staff carpark (for school staff only) will also remain open on Cornock Avenue.

Traffic controllers and detour signs will be in place to ensure safe and efficient traffic management during this period. See map overleaf for more information.

### Out of hours works

These works in February and March, will be undertaken outside the normal hours of work.

The approved out of normal hours work periods are:

- 7 am to 9 pm on Fridays
- 7 am to 5 pm on Saturdays
- 9 am to 3 pm on Sundays

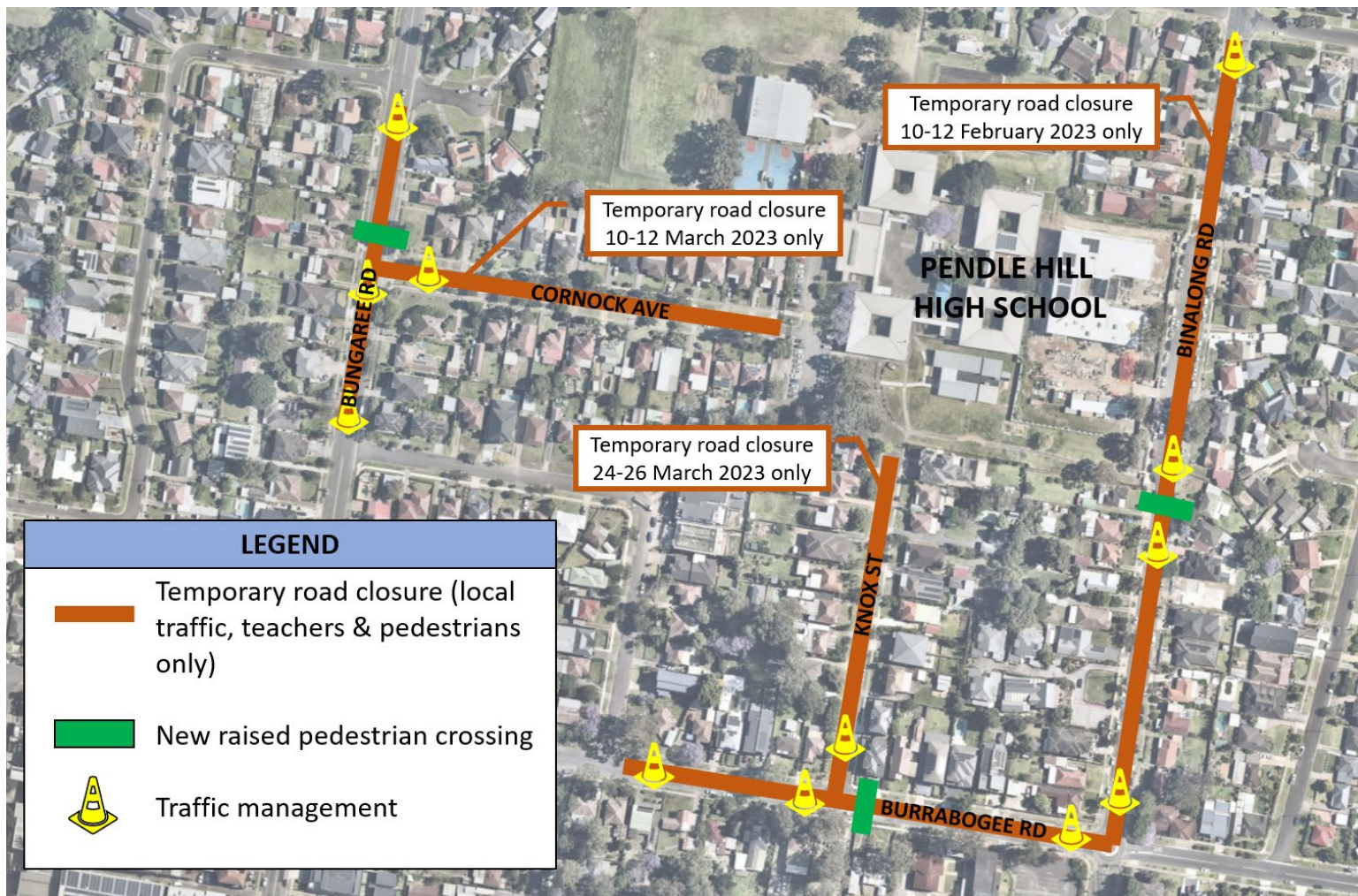
During these periods new road surfaces will be poured, which will include the use of an excavator. An onsite manager will be available at all times to ensure noise is kept at a minimum.

---

#### For more information contact:

School Infrastructure NSW  
Email: [schoolinfrastructure@det.nsw.edu.au](mailto:schoolinfrastructure@det.nsw.edu.au)  
Phone: 1300 482 651  
[www.schoolinfrastructure.nsw.gov.au](http://www.schoolinfrastructure.nsw.gov.au)

## Map of upcoming public domain works



### For more information contact:

School Infrastructure NSW  
Email: [schoolinfrastructure@det.nsw.edu.au](mailto:schoolinfrastructure@det.nsw.edu.au)  
Phone: 1300 482 651  
[www.schoolinfrastructure.nsw.gov.au](http://www.schoolinfrastructure.nsw.gov.au)