



# Pendle Hill High School

Information pack | April 2023

We are excited to announce the upgrades to Pendle Hill High School are nearly finished.

Students and staff will start using the facilities from Day 1 Term 2 2023. The new facilities will include:



**14** new learning spaces,  
including two multimedia  
rooms



Upgrading the old library into **4**  
flexible learning spaces in Block E



A library



A lecture theatre



New staff and  
administration areas



Outdoor learning spaces  
and landscaping



Student amenities

# Getting ready for Term 2 2023

---

## Where do I go on my first day?

On the first day of Term 2 (Wednesday 26 April 2023 at 8:30 am), we ask all students to gather in the assembly area of the quadrangle.

Staff will give students a presentation including key information about new timetables and class locations. Students using the new learning spaces on day one will be escorted to their rooms.

Guides will be in place around the surrounding school entry gates on the morning of Day 1 of Term 2 to help students navigate the new building. If wet weather occurs, students will assemble at their regular roll call locations.

## New school entry

From Day 1 Term 2, the new main school entry will be via the gates on Binalong Road.

The school entry gates on Cornock Avenue, Favell Street and Knox Street will remain open and operational for students and staff.

The entry on the southern side of Binalong Road will be permanently closed.

## School reception and administration relocation

Starting from Day 1 of Term 2, the school reception and administration area will be relocated to the ground floor of the new southern building (Block H). Access to the area will be available from the school entrance gates on Binalong Road.

Please refer to the map overleaf for the access arrangements to the new school reception area.

## Driving to school

The City of Parramatta Council has introduced new parking restrictions around the school. Please comply with the new traffic and road rules around the school.

Kiss and drop zones on Binalong Road, Bungaree Road and Burrabogee Road are operational from 8 am to 9:30 am and 2:30 pm to 4 pm (Monday to Friday).

# Active ways to travel to school

---

## Walking

- Always cross the road at pedestrian crossings or traffic lights.
- Remember to share the footpath and stay to the left-hand side.
- Look out for vehicles entering or leaving driveways.
- Put away distractions such as phones or earphones.

## Ride your bike or scooter

- Always wear a helmet.
- Children under the age of 16 can ride on the footpath but remember to stay to the left-hand side.
- Give pedestrians right of way.
- Look out for vehicles entering or leaving driveways.
- Bicycle parking is available onsite at the school, at the Cornock and Knox street entry points.

# Kiss and drop rules

A dedicated kiss and drop zone extends along Binalong Road. The kiss and drop zone is time limited during designated school hours. You may stop for a maximum of 2 minutes and must remain within 3 metres of your vehicle.

Parents and students with a driver's licence should note that parking in the school area is limited, with most parking areas in the surrounding streets time restricted.

## Bus zone on Binalong Road

8 am to 9 am and 2:30 pm to 3:30 pm (Monday to Friday)

## A new loading zone car space on Binalong Road

9:30 am to 2:30 pm (Monday to Friday)

## No stopping zones Binalong Road, Bungaree Road, and Burrabogee Road



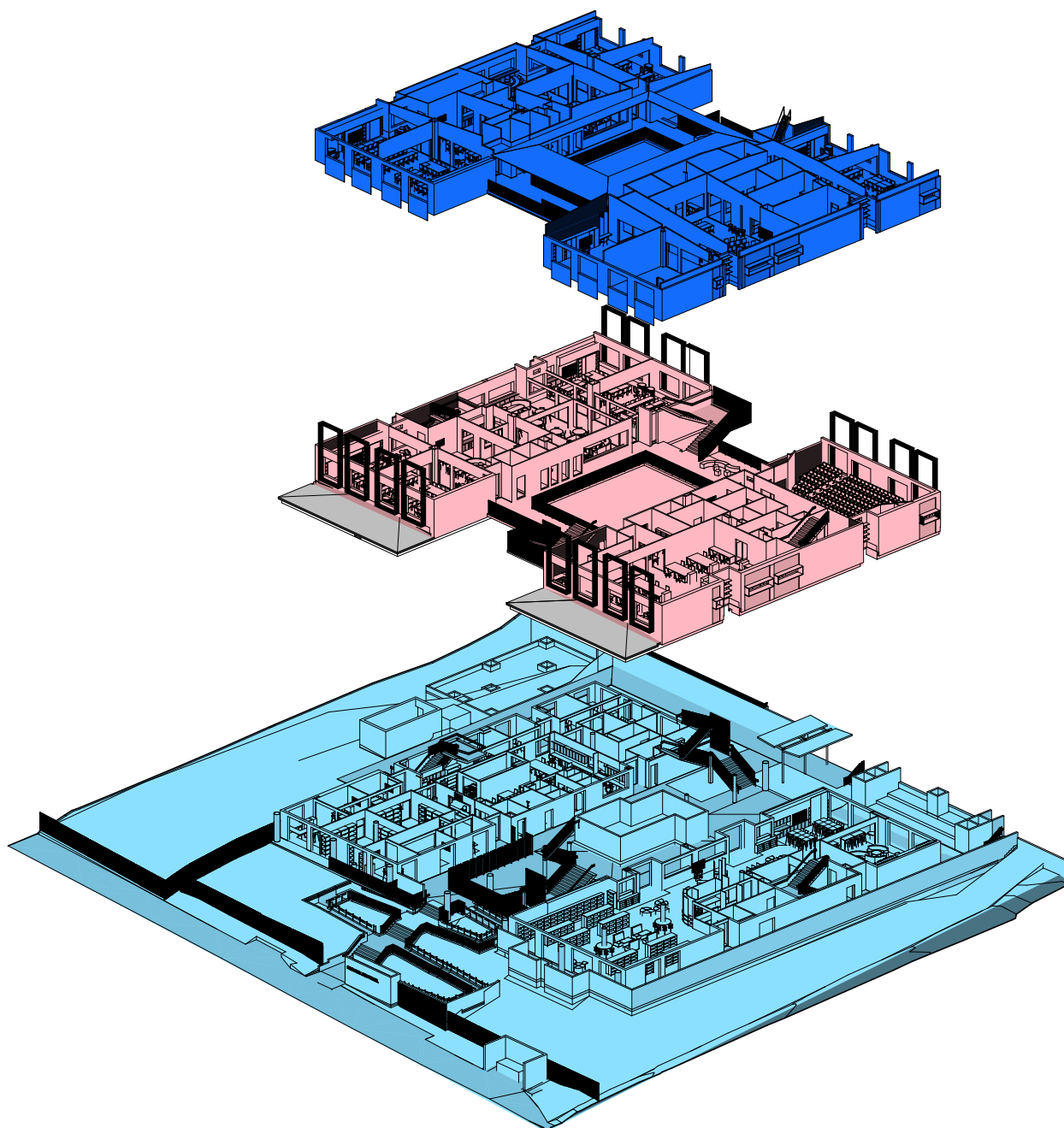


# Site plan



Artist Impression of the Pendle Hill High School

# What is on each level of the new building?



Level	North	South
Ground	Library and linked outdoor learning spaces	Administration office and reception area
1	Lecture theatre, staff administration facilities, and collaboration spaces	Flexible learning spaces
2	Flexible learning spaces and music rooms	Flexible learning spaces

## Frequently asked questions

### When will students and teachers start using the new facilities?

Students and staff will officially start using the new facilities from Day 1 Term 2 2023.

Students go back to school for Term 2 on Wednesday 26 April 2023.

### When will a tour of the upgrades be available to parents?

The school is planning opportunities for parents to view the new facilities. Details will be provided by the school closer to the date.

### Have the school times changed?

No, the school times have remained the same. The Pendle Hill High School times are 8:30 am start to 3:05 pm finish time, except Wednesdays when school finishes at 2:30 pm.

### Has the canteen moved?

No, the canteen has not moved.

### When will I get my new school timetable with class locations?

Students will receive key information about new timetables on Day 1 Term 2.

### Where is the careers advisor now located?

The careers advisor's office will be relocated into the new building (Block H) on level 1.

### Where is sick bay now located?

The sick bay is now located in the new building (Block H). It is located on the lower ground level of the school near the student reception area.

## Contact us

For more information about this project, contact School Infrastructure NSW:

**Website:** [schoolinfrastructure.nsw.gov.au](https://schoolinfrastructure.nsw.gov.au)

**Email:** [schoolinfrastructure@det.nsw.edu.au](mailto:schoolinfrastructure@det.nsw.edu.au)

**Phone:** 1300 482 651

For information about school activities and operations, contact the school directly:

**Principal:** Judy Sims

**Website:** [pendlehill-h.schools.nsw.gov.au](https://pendlehill-h.schools.nsw.gov.au)

**Email:** [pendlehill-h.schools@det.nsw.edu.au](mailto:pendlehill-h.schools@det.nsw.edu.au)

**Phone:** 02 9631 9651



### Translation and Interpreting Service

If you require interpreter services in **Arabic, Bengali, Hindi, Nepali, Urdu** or any other language call **131 450** and ask this Translation and Interpreting Service to phone School Infrastructure NSW on **1300 482 651**.