

Passfield Park School redevelopment

Works notification

October 2021

Dear Neighbour,

A project is underway to redevelop Passfield Park School. This project will deliver 16 new permanent teaching spaces, a new library and a hall, a new entrance and drop off area for parents/carers and students, new core facilities including staff and administration areas, a new covered outdoor learning area and an indoor sports facility.

Changes to traffic conditions on Durham Street

As part of the Passfield Park School redevelopment, upgrades are required to be made to Durham Street to support traffic management in the area. To ensure the safety of the school and local community a median strip will be installed on Durham Street to stop vehicles from turning across the flow of traffic when entering and exiting the school. These works are a requirement of the development application by Campbelltown City Council and Transport for NSW (TfNSW) and will result in a permanent change to traffic flow on Durham Street.

Entry to and exit from the school will only be possible when travelling west on Durham Street, towards Pembroke Road.

Works will start on 29 October 2021, between the hours of 7 am and 6 pm, and will take approximately 14 days, subject to weather conditions. During the construction works:

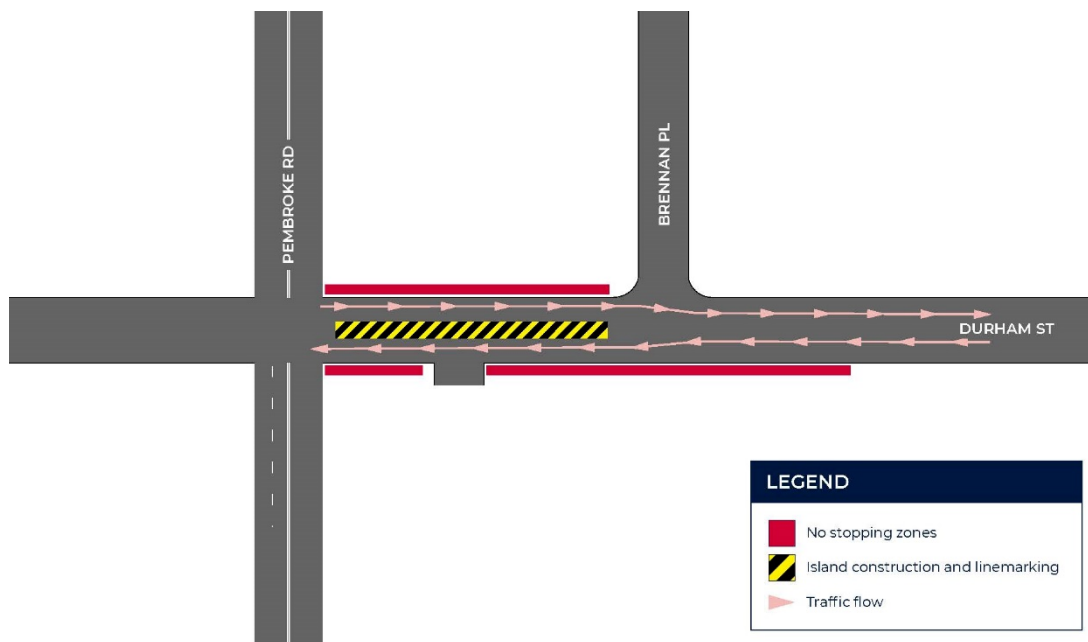
- The centre lanes will be closed, and there will be no parking on Durham Street between Pembroke Road and Guernsey Avenue for the duration of works.
- Traffic controllers will be in place to maintain the flow of traffic.

Please see the maps overleaf for more details.

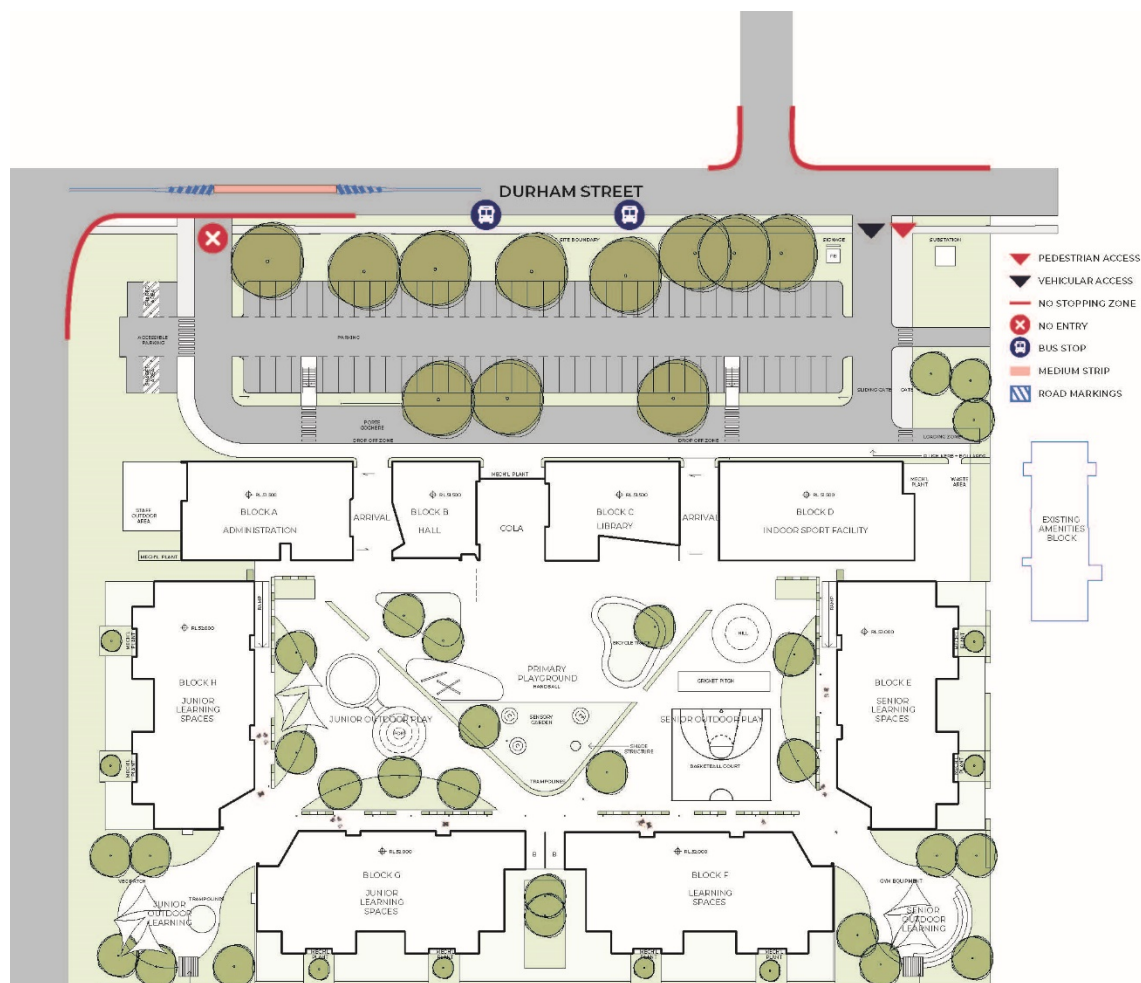
For more information contact:

School Infrastructure NSW
Email: schoolinfrastructure@det.nsw.edu.au
Phone: 1300 482 651
www.schoolinfrastructure.nsw.gov.au

Map below shows changes to Durham Street during construction works.



Map below shows changes to Durham Street once works are finished.



For more information contact:

School Infrastructure NSW
 Email: schoolinfrastructure@det.nsw.edu.au
 Phone: 1300 482 651
www.schoolinfrastructure.nsw.gov.au