

Passfield Park School project

Passfield Park School for Specific Purposes is being fast tracked to meet the requirements of the school and the community. The vision for the school is to create a new environment that strengthens communication and a greater sense of wellbeing by providing active and passive recreational facilities for all.

The project scope includes new facilities with innovative learning and play spaces. The project is currently in the schematic design phase.

 New innovative and flexible learning spaces

 New library

 New hall

 New administration and staff facilities

 New COLA and landscaped outdoor areas

 New hydrotherapy pool



This is an example of a school for specific purposes we have delivered for students in NSW

Passfield Park School for Specific Purposes

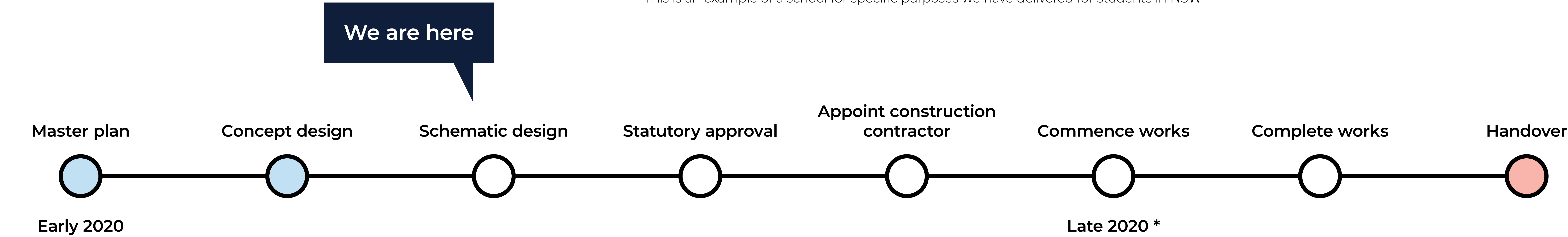
For more information phone: 1300 482 651
Email: schoolinfrastructure@det.nsw.edu.au

Investing in our Schools

The NSW Government is investing \$6.7 billion over four years to deliver more than 190 new and upgraded schools to support communities across NSW. In addition, a record \$1.3 billion is being spent on school maintenance over five years, along with a record \$500 million for the sustainable Cooler Classrooms program to provide air conditioning to schools. This is the largest investment in public education infrastructure in the history of NSW. We are excited to announce that Passfield Park School for Specific Purposes is being fast tracked to meet the needs of the school and the community.



This is an example of a school for specific purposes we have delivered for students in NSW



*pending planning approvals

Passfield Park School for Specific Purposes

For more information phone: 1300 482 651
Email: schoolinfrastructure@det.nsw.edu.au

Next steps

The next steps for the project include:

- Finalise schematic design.
- Request for tender (RFT) for main construction contractor.
- Award main construction contractor.
- Commence construction works late 2020.

The anticipated date for construction to commence is late 2020 however it is dependent on the planning approval process. We will keep the school community informed throughout each phase of the project.

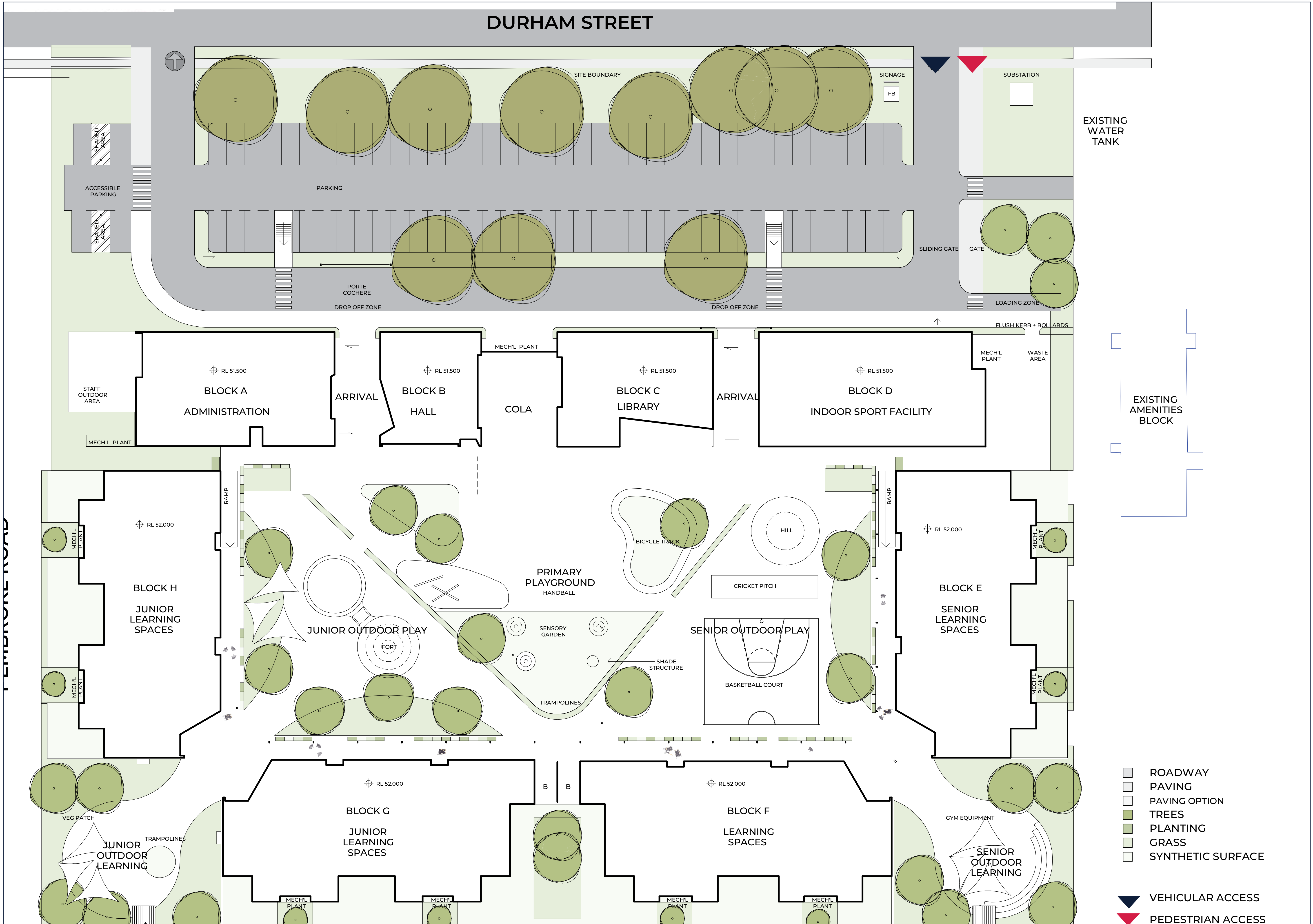


This is an example of a school for specific purposes we have delivered for students in NSW

Passfield Park School for Specific Purposes

For more information phone: 1300 482 651
Email: schoolinfrastructure@det.nsw.edu.au

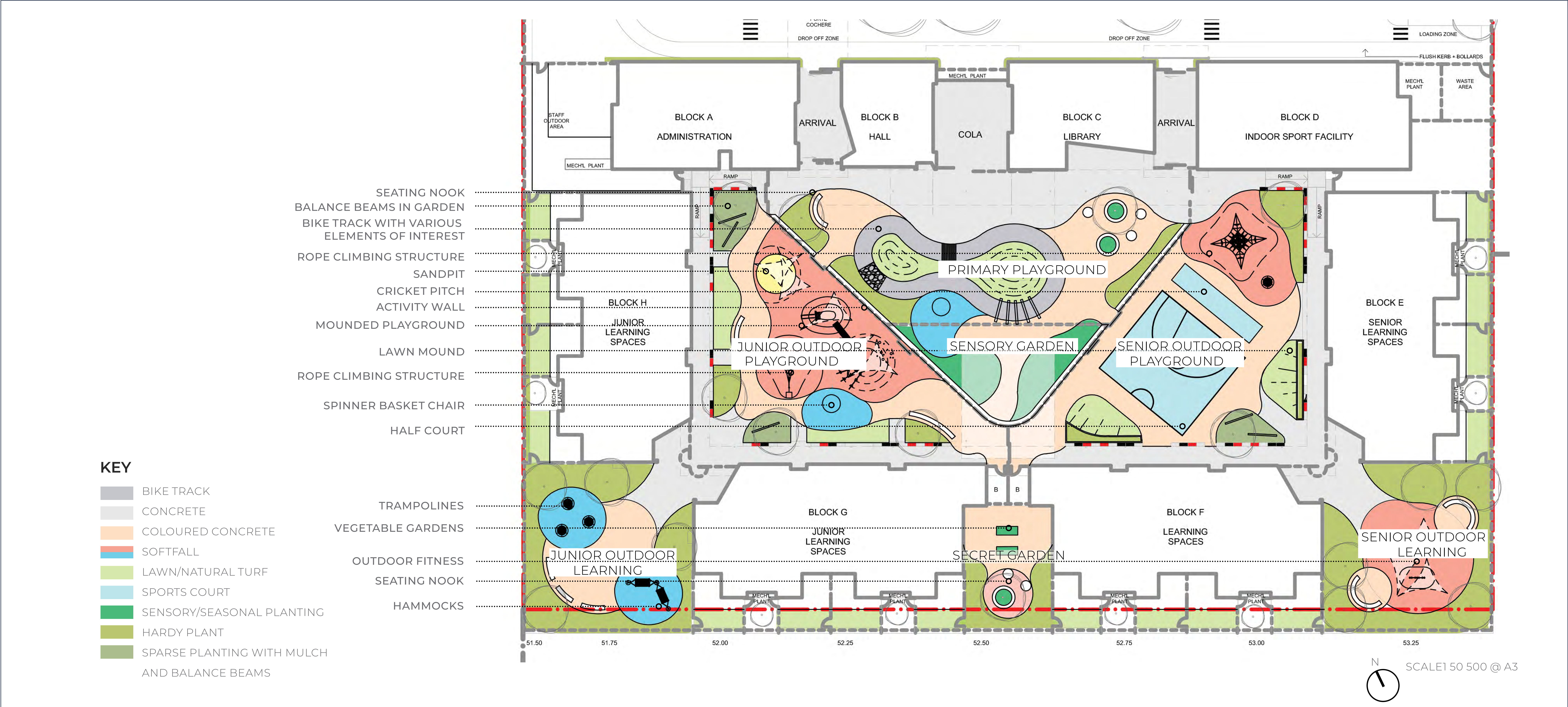
Site plan



Passfield Park School for Specific Purposes

For more information phone: 1300 482 651
Email: schoolinfrastructure@det.nsw.edu.au

Place concept



Passfield Park School for Specific Purposes

For more information phone: 1300 482 651
Email: schoolinfrastructure@det.nsw.edu.au