



Example of upgraded facilities being delivered across NSW

Orange Grove Public School

Planning update

May 2022

Investing in our schools

The NSW Government is investing \$7.9 billion over the next four years, continuing its program to deliver 215 new and upgraded schools to support communities across NSW. This is the largest investment in public education infrastructure in the history of NSW.

The NSW Department of Education is committed to delivering new and upgraded schools for communities across NSW. The delivery of these important projects is essential to the future learning needs of our students and supports growth in the local economy.

Orange Grove Public School

Funding for an upgrade of Orange Grove Public School was announced as part of the NSW 2021/22 Budget and will include additional fit-for-purpose learning spaces and upgraded core facilities to meet enrolment growth.

We are currently in the planning phase for the project. This includes analysing demographic trends and educational needs and conducting site investigations, design work and transport analysis. A Project Reference Group (PRG) has been established for the project and includes representatives from the Department of Education and Orange Grove Public School, architects, planners and design professionals. We have appointed PTW Architects to develop the design in consultation with the PRG.

A business case seeking government approval to proceed with the upgrade to the public school has been submitted and is expected to be approved in the coming months.

Next steps

- Consideration of the business case.
- Ongoing development of the design in consultation with members of the PRG, considering educational, operational and service delivery requirements.
- Confirmation of the statutory planning pathway for the upgrade.

To have project updates emailed directly to you, complete the 'Get involved' contact form on the Orange Grove Public School project webpage on the School Infrastructure NSW website, or contact us using the details below.

For more information contact:

School Infrastructure NSW
Email: schoolinfrastructure@det.nsw.edu.au
Phone: 1300 482 651
www.schoolinfrastructure.nsw.gov.au

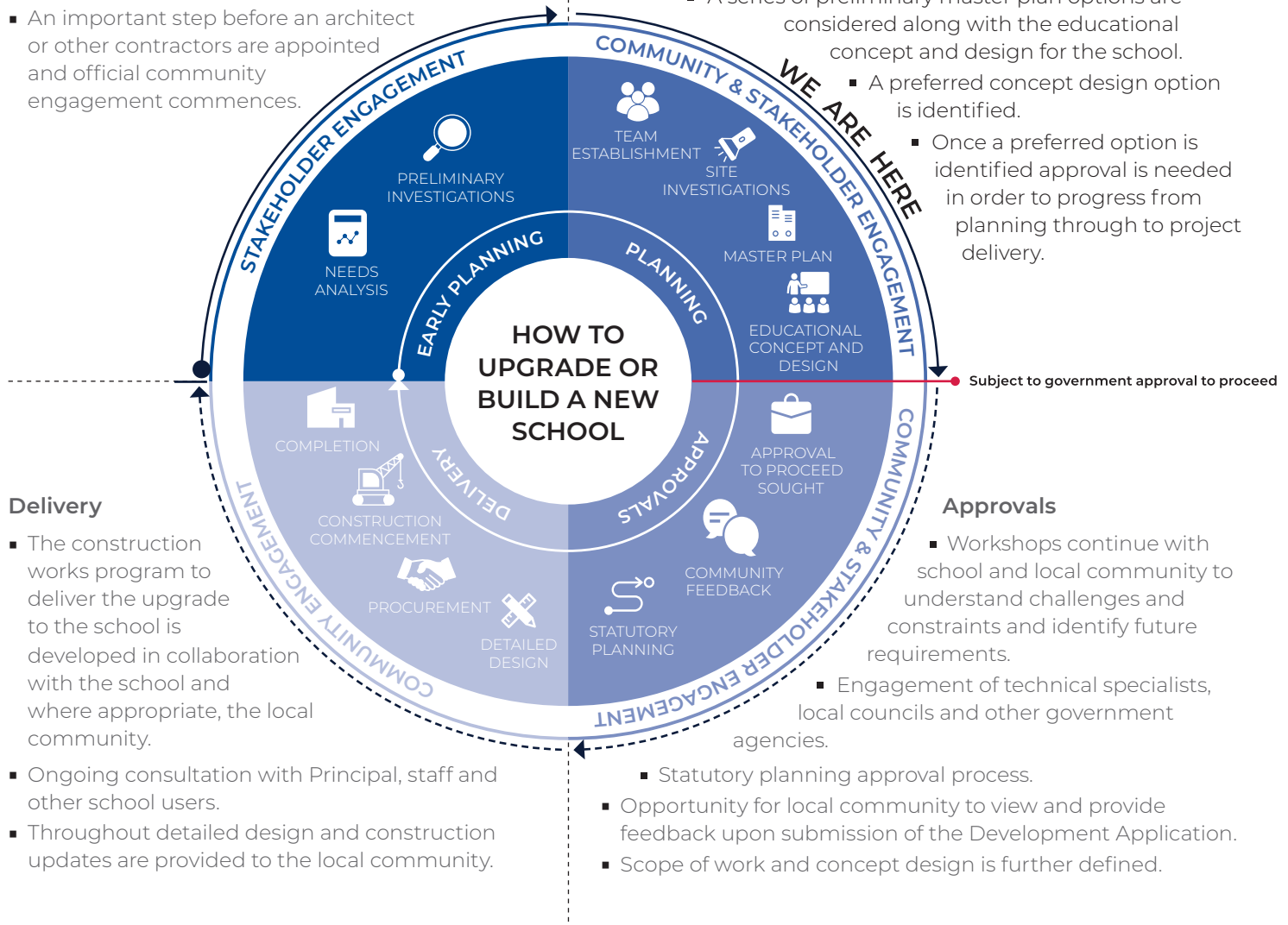
How to upgrade or build a new school

Early planning

- Consideration and studies of demographic trends, education requirements, the condition of the existing school buildings, catchment boundaries, heritage requirements, transport links and partnership opportunities.
- Doing so means that we:
 - consider the needs of the local area now and into the future.
 - ensure the right school is designed for the community.
- An important step before an architect or other contractors are appointed and official community engagement commences.

Planning

- Consultants such as architects and project managers are appointed.
- Investigation and review of site and development of master plan options.
- Master planning considers options for the general size, shape and form of buildings for a specific school site.
- A Project Reference Group (PRG) is established.
- Operational, educational and service delivery factors are understood and considered by the PRG.
- A series of preliminary master plan options are considered along with the educational concept and design for the school.
 - A preferred concept design option is identified.
- Once a preferred option is identified approval is needed in order to progress from planning through to project delivery.



Delivery

- The construction works program to deliver the upgrade to the school is developed in collaboration with the school and where appropriate, the local community.
- Ongoing consultation with Principal, staff and other school users.
- Throughout detailed design and construction updates are provided to the local community.

For more information contact:

School Infrastructure NSW
 Email: schoolinfrastructure@det.nsw.edu.au
 Phone: 1300 482 651
www.schoolinfrastructure.nsw.gov.au