



Image of completed stage 1 upgrade at Oran Park Public School

Oran Park Public School upgrade – Stage 2 Planning update

August 2022

Investing in our schools

The NSW Government is investing \$8.6 billion in school infrastructure over the next four years, continuing its program to deliver 160 new and upgraded schools to support communities across NSW. This builds on the more than \$9.1 billion invested in projects delivered since 2017, a program of \$17.7 billion in public education infrastructure.

The NSW Department of Education is committed to delivering new and upgraded schools for communities across NSW. The delivery of these important projects is essential to the future learning needs of our students and supports growth in the local economy.

Upgrading Oran Park Public School

A project to upgrade Oran Park Public School is in the planning phase and is expected to include:

- providing additional permanent teaching spaces to cater for future student demand in catchment
- upgrading core facilities
- improving the traffic and transport around the school.

The final scope of the upgrade is subject to business case and planning approvals and procurement processes. School Infrastructure NSW (SINSW) is working closely with Oran Park Public School to deliver facilities that meet the needs of the school community. Further detail will be added to the design as the project continues through the schematic design phase and into project delivery.

What have we done so far?

A Project Reference Group (PRG) has been established for the project and includes representatives from the NSW Department of Education and the leadership of Oran Park Public School, teacher and community representatives, planners and design professionals. The purpose of this group is to discuss the needs of the school and how they can best be met within the scope of the project, while ensuring we take into account possible future needs.

Since the announcement of the project in the 2021/22 NSW Budget, we have been working on:

- further analysing demographic trends and the school community needs
- conducting site investigations to assess the condition of existing buildings, site surroundings and onsite risks

For more information contact:

School Infrastructure NSW
Email: schoolinfrastructure@det.nsw.edu.au
Phone: 1300 482 651
www.schoolinfrastructure.nsw.gov.au

- appointment of an architect to develop the design in consultation with the PRG. Design work so far includes multiple masterplan options and discussion of the advantages and disadvantages of each. The preferred masterplan option has then progressed to concept design
- preparing the development application documentation for submission
- working with Camden Council and the transport consultant to conduct a traffic and transport analysis
- preparing a business case for submission to NSW Treasury
- tendering and appointment of an Early Contractor Involvement (ECI) contractor for the construction works.

What's next?

- A business case to seek government approval to proceed with the upgrade will soon be submitted.
- Ongoing development of the design in consultation with representatives from the PRG.

What is the purpose of the business case?

Funding has been committed to upgrade Oran Park Public School, but in order for the funds to be released for ongoing design development and the construction phase, we have to prepare a business case for NSW Treasury approval.

The business case process provides the basis for the continued development of the project options, through refinement, comparison, analysis and evaluation, to ensure that the ultimate project represents the greatest value for money solution.

How will we keep you updated?

School Infrastructure NSW (SINSW) is committed to keeping the school and local communities informed about the project. We do this in a range of ways. In particular with information sessions, project updates (such as this document), the school newsletter and the project page on the SINSW website.

To stay up to date on the project, please visit the project webpage and view materials published in the 'library' tab: <https://www.schoolinfrastructure.nsw.gov.au/projects/o/oran-park-public-school-upgrade---stage-2.html>

If you have any further queries, please do not hesitate to call the SINSW community hotline or email address below. Your questions and comments help inform future project updates.

Want to know more about how we build and upgrade schools?

We design and deliver schools to suit the individual needs of the local school community. We harness opportunities and solve challenges. As a result, no two schools are exactly the same.

What remains consistent is school infrastructure that empowers teachers to prepare students with the skills and capabilities they need to thrive in a rapidly changing and interconnected world.

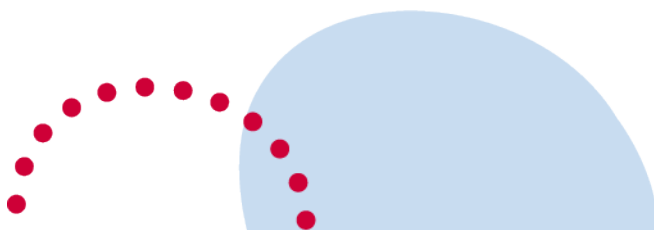
Take a look at some of the upgrades we have delivered and see how these varied spaces support teaching and learning.

Simply scan the QR code, or visit edu.nsw.link/SchoolShowcase



For more information contact:

School Infrastructure NSW
Email: schoolinfrastructure@det.nsw.edu.au
Phone: 1300 482 651
www.schoolinfrastructure.nsw.gov.au



The information below takes you through the journey of upgrading or building a new school.

Early planning

- Consideration and studies of demographic trends, education requirements, the condition of the existing school buildings, catchment boundaries, heritage requirements, transport links and partnership opportunities.
- Doing so means that we:
 - consider the needs of the local area now and into the future.
 - ensure the right school is designed for the community.
- An important step before an architect or other contractors are appointed and official community engagement commences.

Planning

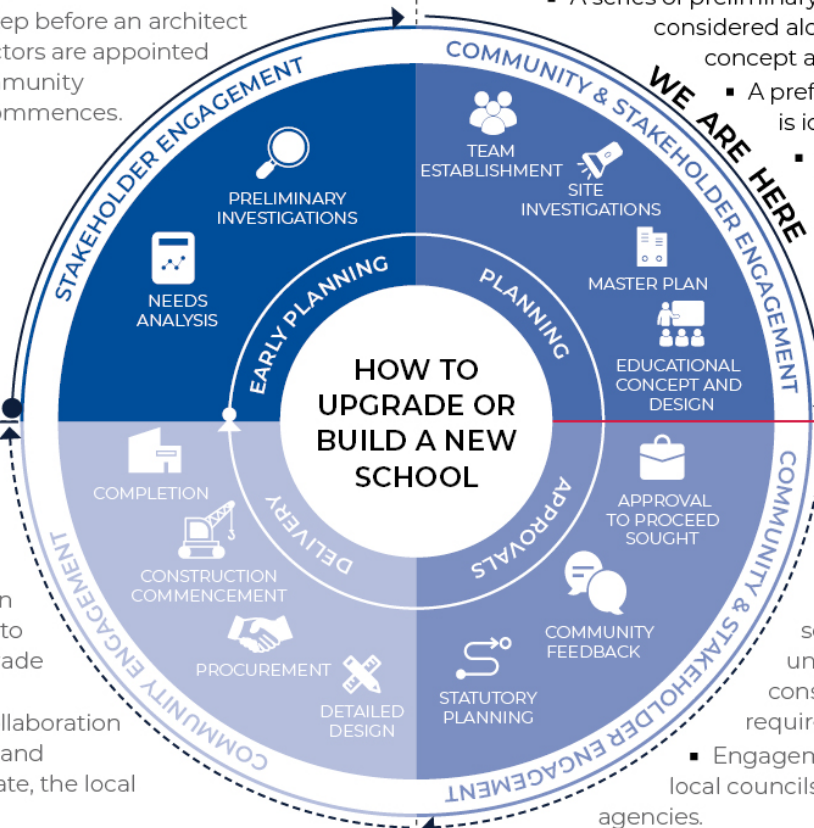
- Consultants such as architects and project managers are appointed.
- Investigation and review of site and development of master plan options.
- Master planning considers options for the general size, shape and form of buildings for a specific school site.
- A Project Reference Group (PRG) is established.
- Operational, educational and service delivery factors are understood and considered by the PRG.
 - A series of preliminary master plan options are considered along with the educational concept and design for the school.
 - A preferred concept design option is identified.
 - Once a preferred option is identified approval is needed in order to progress from planning through to project delivery.

Delivery

- The construction works program to deliver the upgrade to the school is developed in collaboration with the school and where appropriate, the local community.
- Ongoing consultation with Principal, staff and other school users.
- Throughout detailed design and construction updates are provided to the local community.

Approvals

- Workshops continue with school and local community to understand challenges and constraints and identify future requirements.
 - Engagement of technical specialists, local councils and other government agencies.
- Statutory planning approval process.
- Opportunity for local community to view and provide feedback upon submission of the Development Application.
- Scope of work and concept design is further defined.



For more information contact:

School Infrastructure NSW
 Email: schoolinfrastructure@det.nsw.edu.au
 Phone: 1300 482 651
www.schoolinfrastructure.nsw.gov.au