

New primary school near Sydney Olympic Park (Carter Street Precinct)

Project update | October 2023

Investing in our schools

As part of the NSW Government's plan to rebuild essential services, the 2023-24 Budget is delivering a record \$3.5 billion for new and upgraded schools in Western Sydney. This targeted investment in growing communities will ensure working families get access to a world class public education.

New primary school near Sydney Olympic Park

To accommodate current and future growth in the Sydney Olympic Park area, this project will deliver a new primary school in the Carter Street Precinct. This is in addition to upgrades at Wentworth Point Public School, a new primary school for Rhodes East and a new high school for Wentworth Point.

Further updates will be released as this project progresses.

The new school will include classrooms, a library, hall, canteen, playground facilities and other fit-for-purpose educational infrastructure.

This school will not only provide essential education infrastructure but also accommodate the anticipated increase in enrolments in the area and allow families to conveniently access educational facilities close to home.

At this stage of the project, site investigations and needs analysis are underway. This phase involves consideration and studies of demographic trends, education requirements, intake areas, technical studies, planning requirements, transport links and possible shared area opportunities.

In the next stage of the project, architects, engineers and town planners will be appointed and analysis of the site takes place, along with the development of the concept design. Doing so means that we consider the needs of the local area now and into the future, and ensure the right school is designed for the community.

How can I get involved?

We are committed to working together with our school communities and stakeholders to deliver the best learning facilities for students. As the project progresses from the planning phase, we will share details with the community for feedback.

A dedicated project page has been published on the School Infrastructure NSW website, which is updated as the project progresses. You can also contact us via our community information line and email using the details below.

If you would like to sign up to receive ongoing updates about this project directly to your email, please visit <http://edu.nsw.link/Project-Updates> or scan the QR code.



Want to know more about how we build and upgrade schools?

To learn more about School Infrastructure NSW, and how we deliver new and upgraded schools, simply scan the QR Code, or visit edu.nsw.link/SchoolShowcase.



New primary school for Sydney Olympic Park (Carter Street Precinct)

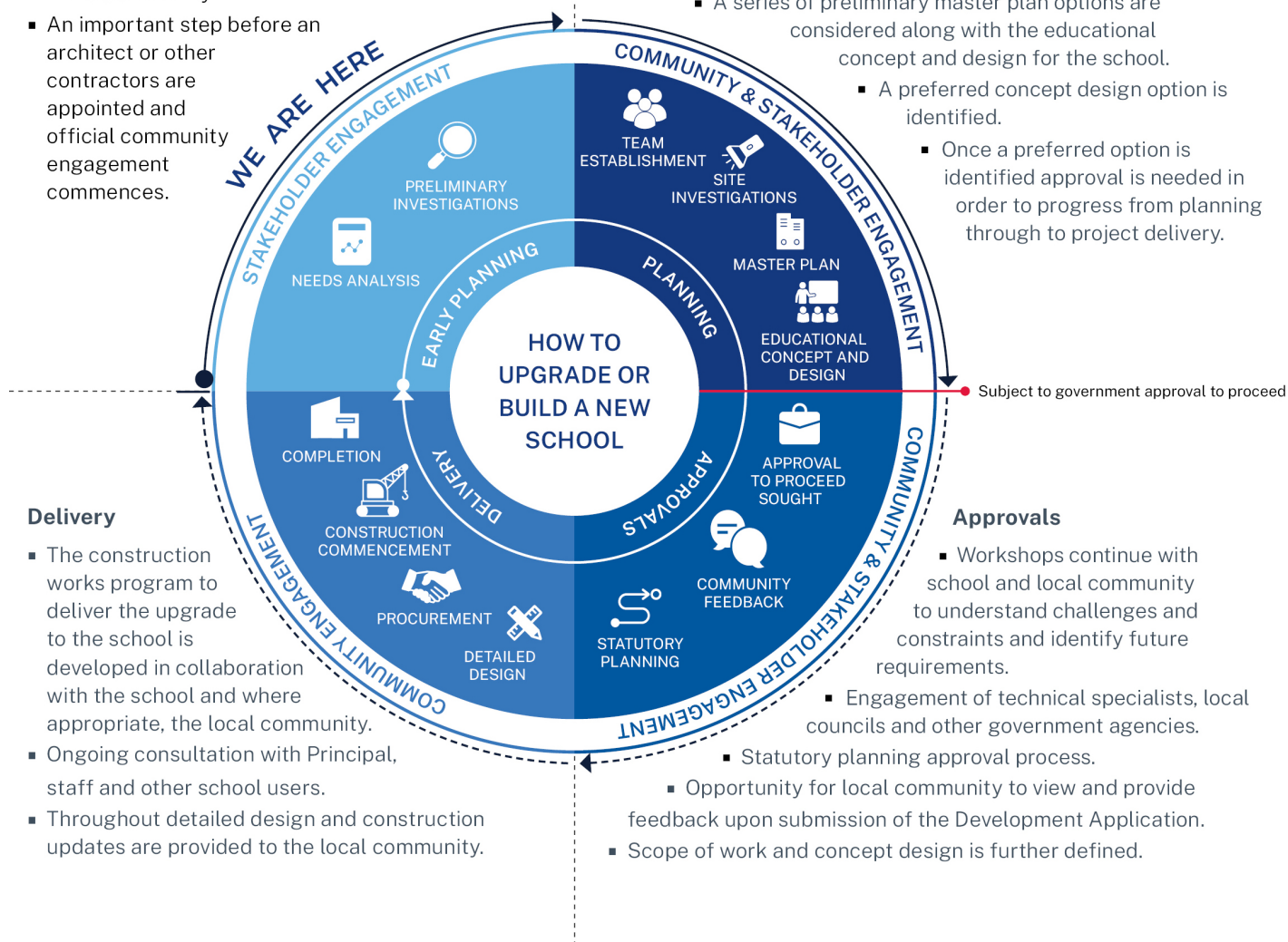
The information below takes you through the process of upgrading or building a new school.

Early planning

- Consideration and studies of demographic trends, education requirements, the condition of the existing school buildings, catchment boundaries, heritage requirements, transport links and partnership opportunities.
- Doing so means that we:
 - consider the needs of the local area now and into the future.
 - ensure the right school is designed for the community.
- An important step before an architect or other contractors are appointed and official community engagement commences.

Planning

- Consultants such as architects and project managers are appointed.
- Investigation and review of site and development of master plan options.
- Master planning considers options for the general size, shape and form of buildings for a specific school site.
- A Project Reference Group (PRG) is established.
- Operational, educational and service delivery factors are understood and considered by the PRG.
 - A series of preliminary master plan options are considered along with the educational concept and design for the school.
 - A preferred concept design option is identified.
 - Once a preferred option is identified approval is needed in order to progress from planning through to project delivery.



Delivery

- The construction works program to deliver the upgrade to the school is developed in collaboration with the school and where appropriate, the local community.
- Ongoing consultation with Principal, staff and other school users.
- Throughout detailed design and construction updates are provided to the local community.

Approvals

- Workshops continue with school and local community to understand challenges and constraints and identify future requirements.
 - Engagement of technical specialists, local councils and other government agencies.
- Statutory planning approval process.
 - Opportunity for local community to view and provide feedback upon submission of the Development Application.
 - Scope of work and concept design is further defined.