

Calderwood new primary school

Planning update | 19 June 2024

Investing in our schools

As part of the NSW Government's plan to rebuild public education, the 2024-25 Budget is delivering record education funding, including \$1.4 billion for new and upgraded schools in regional NSW. This targeted investment will ensure growing communities get access to a world class public education.

As part of this investment a new public preschool and primary school will be delivered for Calderwood.

Project Overview

Planning is continuing for a new public preschool and primary school for Calderwood. The new primary school will have modern classrooms, open spaces and core facilities including a new library, hall, covered outdoor learning area (COLA), administration and staff areas. A master plan is being developed which considers the educational concept and design for the school. At this stage of the project, site investigations and needs analysis are underway.

Next steps

Following a year of planning work by the department, the next stage of the project will include appointing a design team to begin work on the concept design. Further updates will be released as the project progresses.

How can I get involved?

We are committed to working with our school communities and stakeholders to deliver the best learning facilities for students. As the project progresses, we will share details with the community for feedback. A dedicated project page has been published on the School Infrastructure NSW website, which is updated as the project progresses. You can view the project page by visiting [New primary school for Calderwood \(nsw.gov.au\)](https://www.schoolinfrastructure.nsw.gov.au/new-primary-school-for-calderwood).

If you would like to sign up to receive ongoing updates about this project directly to your email, please visit <http://edu.nsw.link/Project-Updates> or scan the QR code below.

To learn more about how we deliver new and upgraded schools, visit edu.nsw.link/SchoolShowcase



New primary school at Calderwood

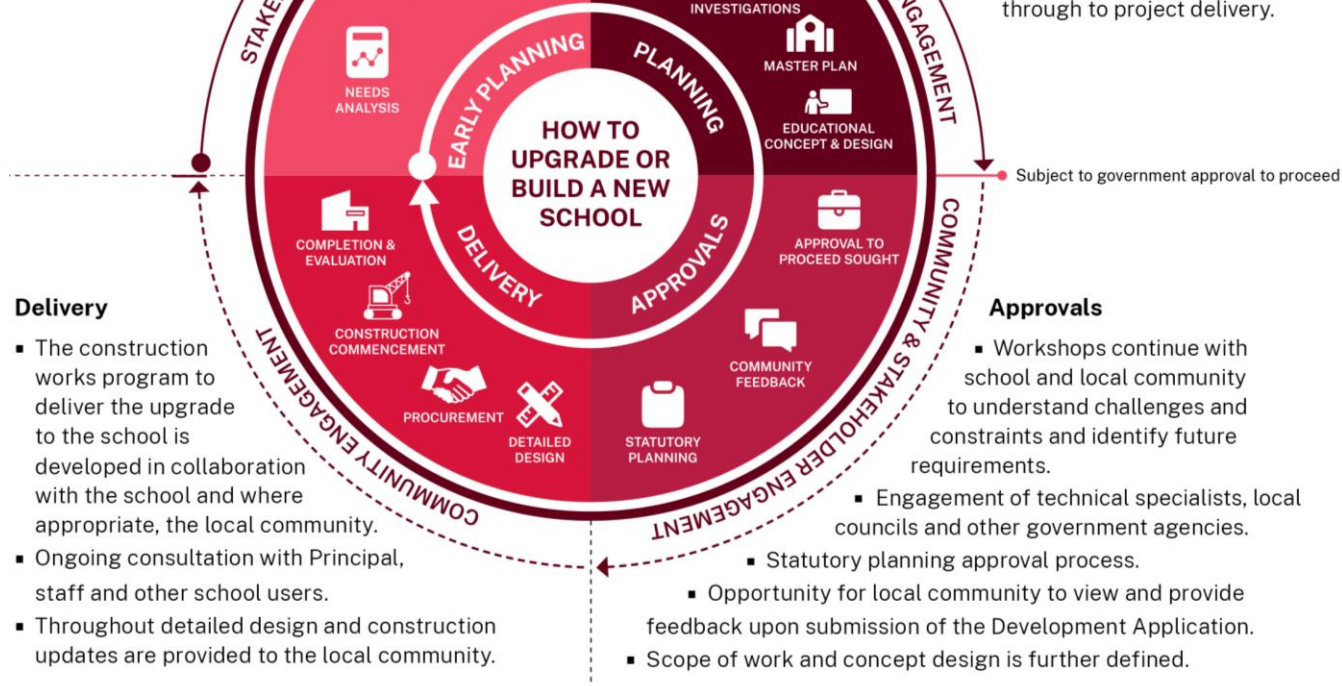
Funding has been allocated for a new public preschool and primary school in Calderwood. The information below takes you through the journey of upgrading or building a new school.

Early planning

- Consideration and studies of demographic trends, education requirements, the condition of the existing school buildings, catchment boundaries, heritage requirements, transport links and partnership opportunities.
- Doing so means that we:
 - consider the needs of the local area now and into the future.
 - ensure the right school is designed for the community.
- An important step before an architect or other contractors are appointed and official community engagement commences.

Planning

- Consultants such as architects and project managers are appointed.
- Investigation and review of site and development of master plan options.
- Master planning considers options for the general size, shape and form of buildings for a specific school site.
- A Project Reference Group (PRG) is established.
- Operational, educational and service delivery factors are understood and considered by the PRG.
 - A series of preliminary master plan options are considered along with the educational concept and design for the school.
 - A preferred concept design option is identified.
 - Once a preferred option is identified approval is needed in order to progress from planning through to project delivery.



Delivery

- The construction works program to deliver the upgrade to the school is developed in collaboration with the school and where appropriate, the local community.
- Ongoing consultation with Principal, staff and other school users.
- Throughout detailed design and construction updates are provided to the local community.

Approvals

- Workshops continue with school and local community to understand challenges and constraints and identify future requirements.
 - Engagement of technical specialists, local councils and other government agencies.
- Statutory planning approval process.
 - Opportunity for local community to view and provide feedback upon submission of the Development Application.
- Scope of work and concept design is further defined.