

Box Hill Public School and Box Hill High School

Works notification | 15 December 2025

As part of the NSW Government's plan to rebuild public education, a project is underway to deliver new permanent educational facilities in Box Hill including a public preschool, primary school and high school, all of which will open on Terry Road, Box Hill on Day 1 Term 1 2028.

Installing temporary water and power services

On Tuesday 16 December and Wednesday 17 December we will be undertaking works to install temporary water and power services to the Terry Road site. This will involve some work outside of the established construction site as shown on the map on the next page.

The works will include:

- drilling beneath Terry Road to connect pipes to the Sydney Water main on the opposite side of the street
- establishing a temporary power connection from the existing power pole outside 50 Terry Road.

Additional minor works will then be carried out within the site boundary to connect these services.

You may notice workers and equipment along Terry Road during this time, as well as some minor noise. We appreciate your patience while these important early works are completed.

Work hours

Works will take place between 7 am and 5 pm Monday to Friday, and between 8 am and 1 pm on Saturdays. No work will occur on Sundays or public holidays.

The site will close at 5 pm on Friday 19 December 2025 and will reopen on Monday 5 January 2026.

School Infrastructure closure

School Infrastructure will be closed from Wednesday 24 December 2025 at 12 pm to Monday 12 January 2026 at 9 am, inclusive, in line with the NSW Government shut down period.

If there is an urgent issue, please contact the site manager listed on the construction site entry signage. In an emergency, please call triple zero (000).

More information

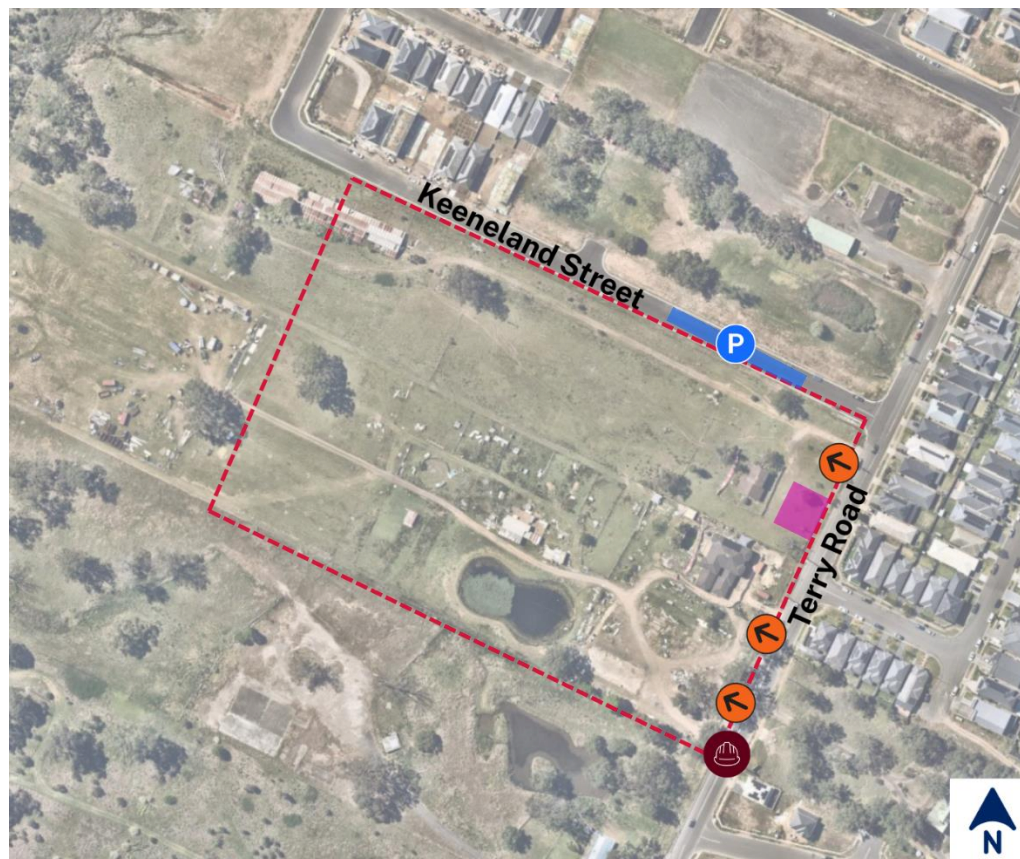


For more information about the new schools in Box Hill, please visit our project page at edu.nsw.link/BoxHill-PS-HS or by scanning the QR code.



Email: schoolinfrastructure@det.nsw.edu.au
Phone: 1300 482 651
schoolinfrastructure.nsw.gov.au

Site plan



Legend

- Construction entrances
- Construction zone
- Contractor parking area
- Site office and amenities
- Terry Road power and water supply works