

# Box Hill new primary and high school

## Planning update | June 2024

### Investing in our schools

As part of the NSW Government's plan to rebuild public education, the 2024-25 Budget is delivering record education funding, including \$3.6 billion for new and upgraded schools in Western Sydney. This targeted investment will ensure growing communities get access to a world class public education. As part of this investment, planning work is well underway to deliver a new public preschool, primary school and high school in Box Hill by 2028.

### Progress Summary

In response to the findings of the NSW Government's Enrolment Growth Audit, these schools will be delivered as a priority in addition to new primary schools for Gables and Tallawong, a new high school for Schofields/Tallawong, and upgrades to Rouse Hill High School and Schofields Public School.

The NSW Government has acquired land for the new schools at 50 and 52 Terry Road Box Hill.

Possible sites for a temporary school are being investigated in order to fast-track the opening of the new primary school at Box Hill in temporary facilities during 2025. This will ensure local families can send their children to a local public school sooner. We hope to provide further updates on this work in the near future.

### Next Steps

We are still in the planning stages for the new Box Hill primary and high school, following the recent site acquisition. This planning stage considers the local area's needs now and into the future to ensure the right school is designed for the community, including initial transport planning, and geotechnical and soil contamination investigations.

Architects, engineers and planners will be appointed in the project's next phase, and master plan options developed. Once the project receives formal approval to proceed into delivery, the project will require development approval. The formal process of gaining this approval is called the statutory planning approval process, which, along with the appointment of a contractor, will establish a timeline for the delivery of the school.

### How can I get involved?

We are committed to working together with our school communities and stakeholders to deliver the best learning facilities for students. A dedicated project page has been published on the School Infrastructure NSW website which will be regularly updated as the project progresses. Visit [edu.nsw.link/NewPrimaryandHighSchoolBoxHill](https://edu.nsw.link/NewPrimaryandHighSchoolBoxHill)



Email: [schoolinfrastructure@det.nsw.edu.au](mailto:schoolinfrastructure@det.nsw.edu.au)  
Phone: 1300 482 651  
[www.schoolinfrastructure.nsw.gov.au](http://www.schoolinfrastructure.nsw.gov.au)

## New primary school and high school at Box Hill

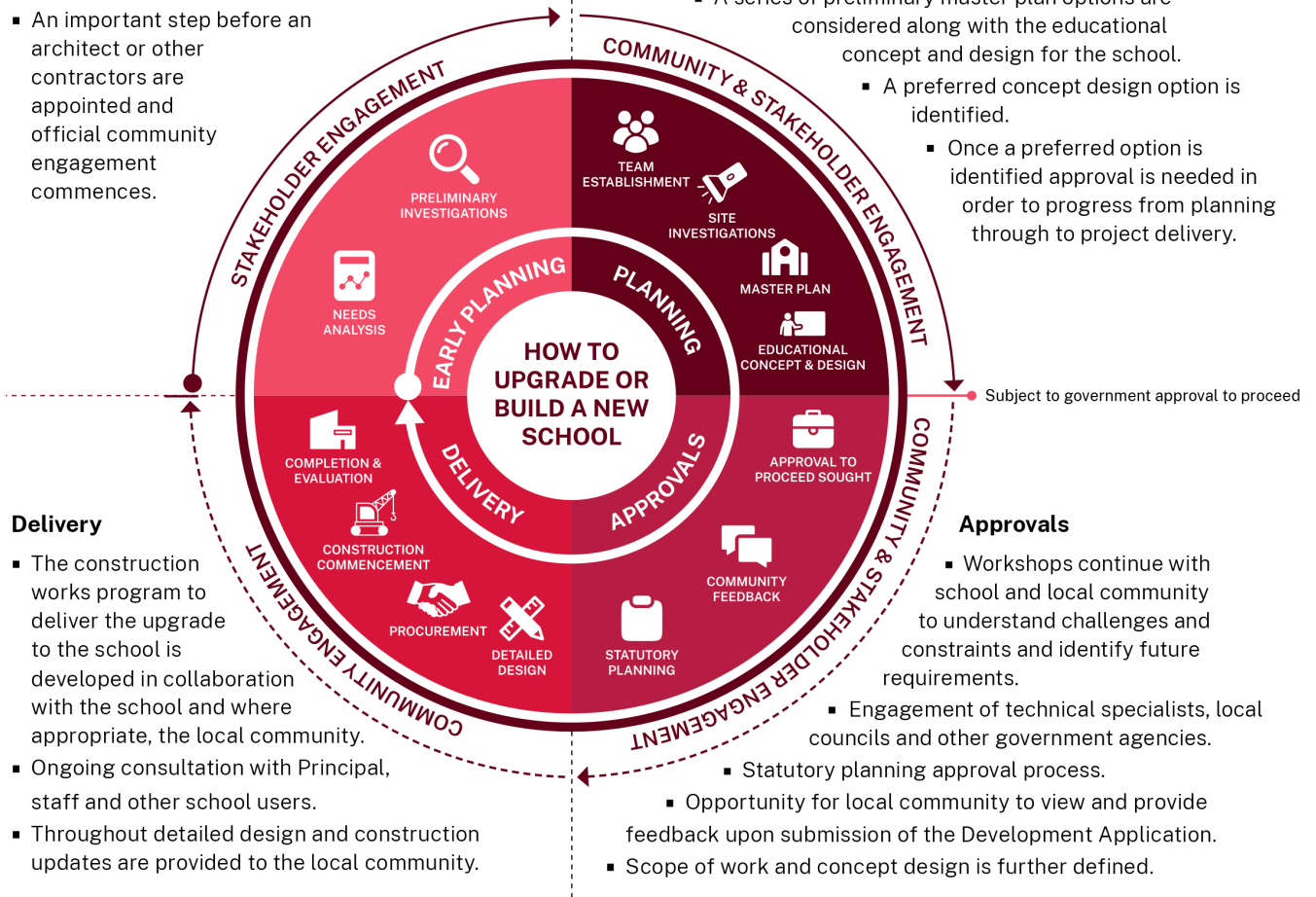
Funding has been allocated to plan and deliver a new public preschool, primary school and high school in Box Hill and the project is in early planning. The information below takes you through the journey of upgrading or building a new school.

### Early planning

- Consideration and studies of demographic trends, education requirements, the condition of the existing school buildings, catchment boundaries, heritage requirements, transport links and partnership opportunities.
- Doing so means that we:
  - consider the needs of the local area now and into the future.
  - ensure the right school is designed for the community.
- An important step before an architect or other contractors are appointed and official community engagement commences.

### Planning

- Consultants such as architects and project managers are appointed.
- Investigation and review of site and development of master plan options.
- Master planning considers options for the general size, shape and form of buildings for a specific school site.
- A Project Reference Group (PRG) is established.
- Operational, educational and service delivery factors are understood and considered by the PRG.
  - A series of preliminary master plan options are considered along with the educational concept and design for the school.
    - A preferred concept design option is identified.
  - Once a preferred option is identified approval is needed in order to progress from planning through to project delivery.



### Delivery

- The construction works program to deliver the upgrade to the school is developed in collaboration with the school and where appropriate, the local community.
- Ongoing consultation with Principal, staff and other school users.
- Throughout detailed design and construction updates are provided to the local community.

### Approvals

- Workshops continue with school and local community to understand challenges and constraints and identify future requirements.
  - Engagement of technical specialists, local councils and other government agencies.
- Statutory planning approval process.
  - Opportunity for local community to view and provide feedback upon submission of the Development Application.
- Scope of work and concept design is further defined.