

# New high school at Pottsville

## Planning update | June 2024

### Investing in our schools

As part of the NSW Government's plan to rebuild public education, the 2024-25 Budget is delivering a record \$8.9 billion for new and upgraded schools. This targeted investment will ensure growing communities get access to a world class public education.

### Project overview

The NSW Government committed to planning for a new high school in Pottsville to meet the needs of the local community. The 2024-25 Budget has provided continued funding for this work.

As part of the planning process, the department has carried out a detailed review of current and projected enrolment demand, planned development and other considerations that will inform the development of the future school.

### Next steps

- Engage specialist experts to conduct due diligence on potential sites, including flood, bushfire and ecological assessments.
- The location of sites under consideration remains commercial-in-confidence at this time, which ensures the department's negotiating position is not affected in current or future site acquisition processes.
- We look forward to providing an update on this work in early 2025.

### Other information

To find out more about how the department determines the need for new or upgraded schools, visit the [Planning for growth page](#) on our website or read the [Planning for growth: Fact sheet](#).

We will continue to publish planning updates to our website and if you have questions, concerns or require further information please contact [schoolinfrastructure@det.nsw.edu.au](mailto:schoolinfrastructure@det.nsw.edu.au) or call 1300 482 651.



## New high school at Pottsville

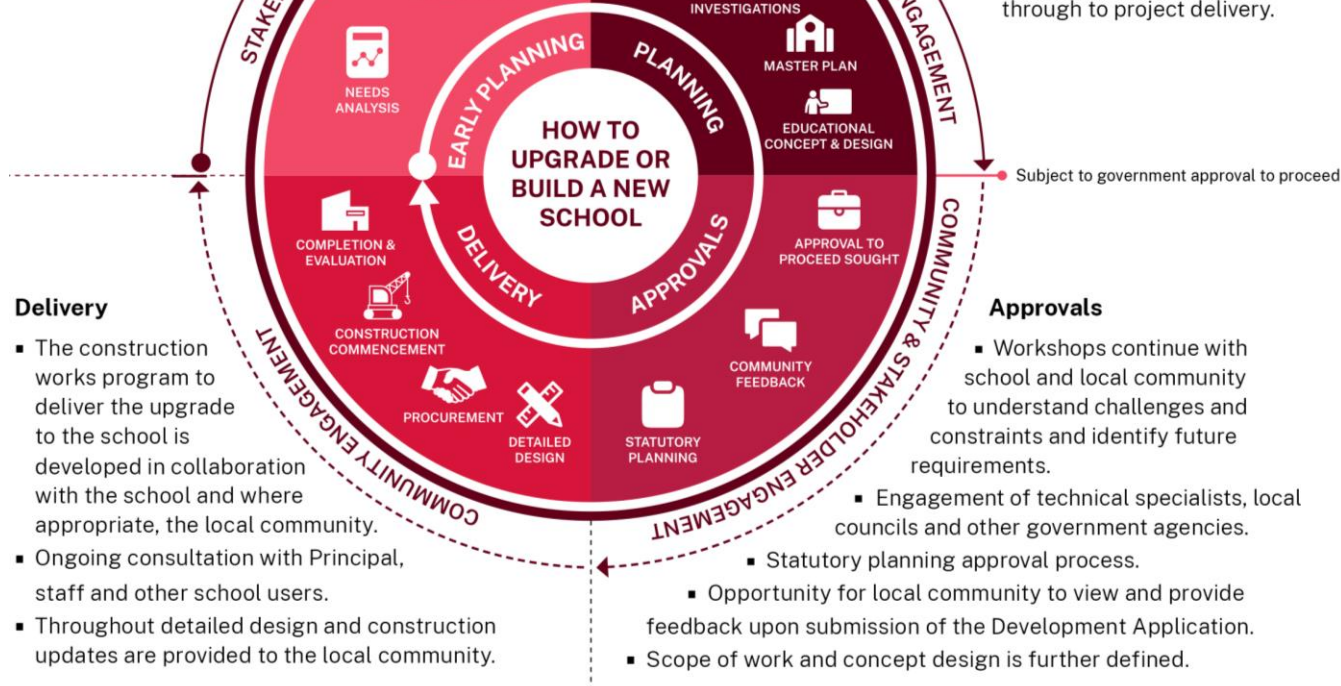
Planning funding has been allocated for a new high school in Pottsville. The information below takes you through the journey of upgrading or building a new school.

### Early planning

- Consideration and studies of demographic trends, education requirements, the condition of the existing school buildings, catchment boundaries, heritage requirements, transport links and partnership opportunities.
- Doing so means that we:
  - consider the needs of the local area now and into the future.
  - ensure the right school is designed for the community.
- An important step before an architect or other contractors are appointed and official community engagement commences.

### Planning

- Consultants such as architects and project managers are appointed.
- Investigation and review of site and development of master plan options.
- Master planning considers options for the general size, shape and form of buildings for a specific school site.
- A Project Reference Group (PRG) is established.
- Operational, educational and service delivery factors are understood and considered by the PRG.
  - A series of preliminary master plan options are considered along with the educational concept and design for the school.
  - A preferred concept design option is identified.
  - Once a preferred option is identified approval is needed in order to progress from planning through to project delivery.



### Delivery

- The construction works program to deliver the upgrade to the school is developed in collaboration with the school and where appropriate, the local community.
- Ongoing consultation with Principal, staff and other school users.
- Throughout detailed design and construction updates are provided to the local community.

### Approvals

- Workshops continue with school and local community to understand challenges and constraints and identify future requirements.
  - Engagement of technical specialists, local councils and other government agencies.
- Statutory planning approval process.
  - Opportunity for local community to view and provide feedback upon submission of the Development Application.
- Scope of work and concept design is further defined.