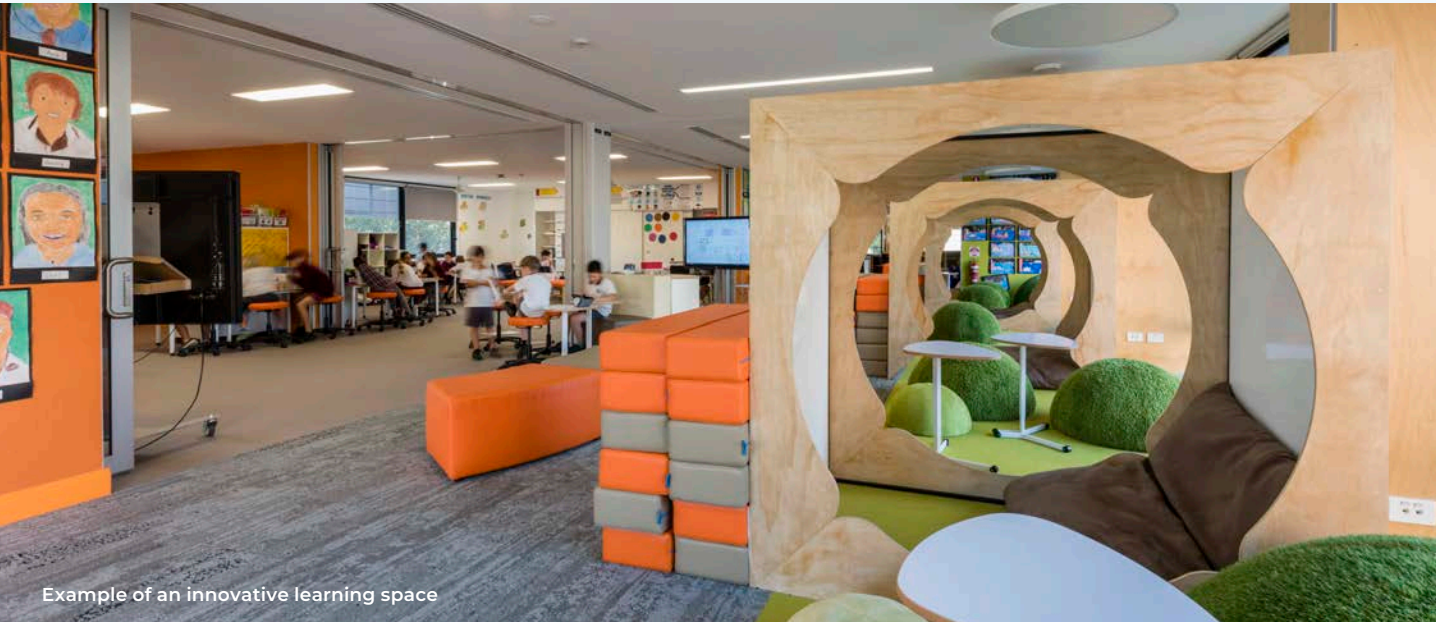
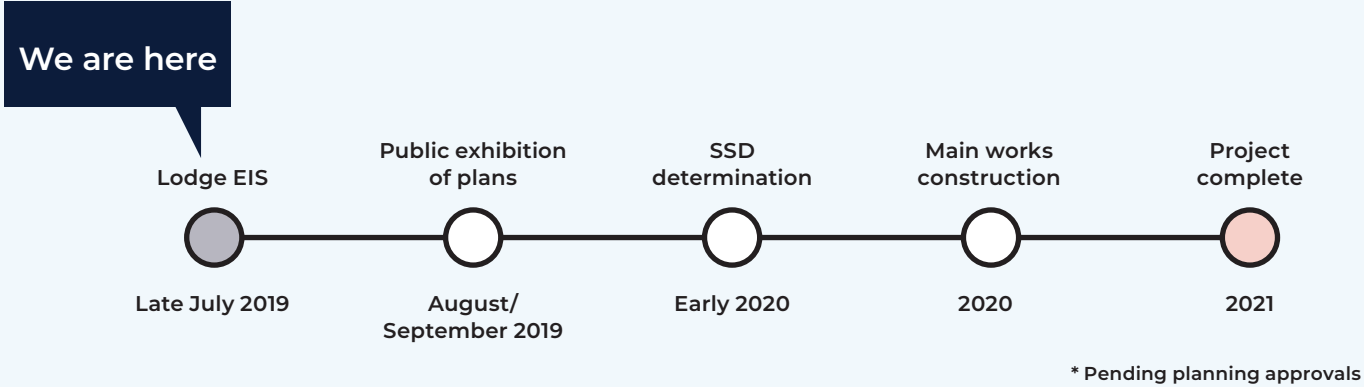


Project timeline



For more information

We are committed to working together with our school communities and other stakeholders to deliver the best possible learning facilities for students. We encourage feedback from the school and local community about the Northbourne Drive new primary school project.

Stay informed

	Website Stay up to date by visiting the School Infrastructure NSW website schoolinfrastructure.nsw.gov.au
	Email Contact the Community Engagement team by emailing schoolinfrastructure@det.nsw.edu.au
	Phone Contact us between 9am–5pm, Monday to Friday on 1300 482 651

Northbourne Drive new primary school

Information pack
July 2019



New modern teaching spaces and facilities for up to **1,000** primary school students



innovative learning spaces



a new hall



a library



enhanced open spaces



a canteen



covered outdoor learning areas (COLA)

Investing in schools

The NSW Government is investing \$6.7 billion over the next four years to deliver 190 new and upgraded schools to support communities across NSW. In addition, a record \$1.3 billion is being spent on school maintenance over five years. This is the largest investment in public education infrastructure in the history of NSW.

Northbourne Drive new primary school

The project is in the early stages of planning.

The new primary school in the Marsden Park area is designed to accommodate up to 1,000 students from year K-6 and provide new permanent, flexible learning spaces, a hall, library, covered outdoor learning area (COLA) and staff and administration facilities.

The school will be located in the Elara estate on Northbourne Drive and is forecast to be completed in 2021.

Project status

A Project Reference Group (PRG) has been formed and the concept design process is underway.

As this project is classified as State Significant Development, a development application and Environmental Impact Statement (EIS) will be submitted to the Department of Planning, Industry and Environment for assessment in late July 2019.

The State Significant Development (SSD) application will include:

- A Heritage Impact Statement and Assessment
- A transport and accessibility impact assessment report
- Assessment of noise and vibration impacts.

Frequently asked questions

What kind of school will it be?

The new primary school will be for students in grades Kindergarten to Year 6 inclusive. It will offer modern facilities to foster innovative teaching methods.

Special programs rooms and special education support classes are also included.

How has the design of the school been informed?

The concept designs have been informed by agreed educational rationale developed with the PRG, which includes representatives from the Northwest Sydney School Executive, project delivery team & technical experts.

Site plans and early designs will be on public exhibition as part of the SSD application.

When will the school open?

The project is in the early planning phase. The new primary school is forecast to be completed in 2021, subject to planning approvals.

How many students will go to Northbourne Drive?

This project will provide a new primary school in Marsden Park for up to 1,000 students from K-6.

When can I enrol my child into the new school?

The school will be open for enrolments as the project nears completion. We will keep local residents informed as the project progresses and the department will inform the community when the school begins taking enrolments.

Do I live in the catchment area?

The school catchment area will be finalised as the project progresses.

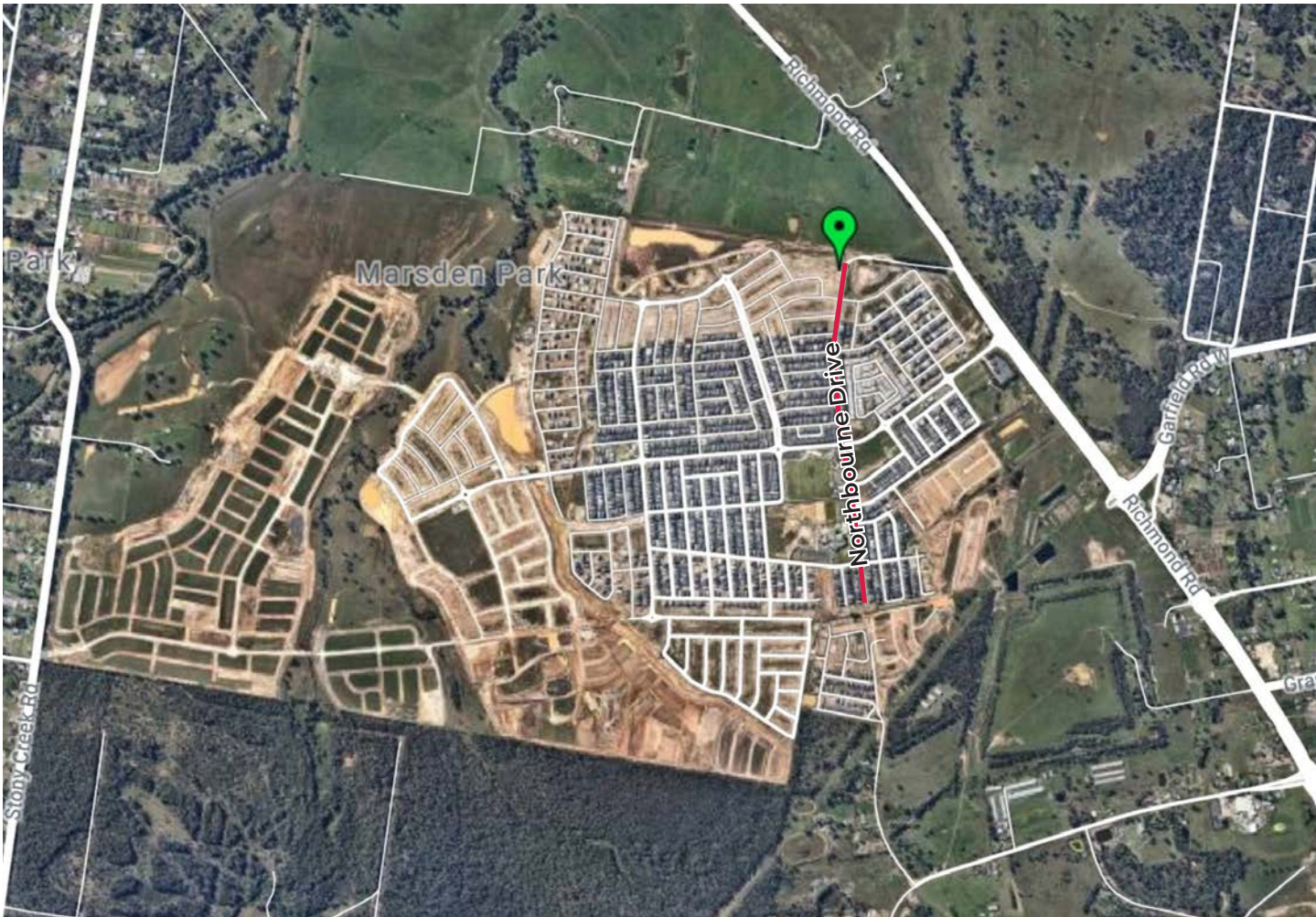
We recommend you visit <https://education.nsw.gov.au/school-finder> to find your school catchment.

What are innovative learning environments?

Innovative learning environments are designed to facilitate learning that strives for the best possible outcomes for students and develops skills critical to thrive in an increasingly complex world.

Innovative learning spaces are flexible and well-resourced so that teachers can design a wide range of learning activities to develop the skills and knowledge of students.

Learning is tailored to suit the needs and interests of students allowing them to learn at their own pace and demonstrate their learning in different ways.



Location of Northbourne Drive new primary school



Example of an innovative learning space