

# North Sydney Public School

Information pack | August 2021



Artist impression of the North Sydney Public School upgrade. Indicative only.

The NSW Government is investing \$7.9 billion over the next four years, continuing its program to deliver 215 new and upgraded schools to support communities across NSW. This is the largest investment in public education infrastructure in the history of NSW.

The NSW Department of Education is committed to delivering new and upgraded schools for communities across NSW. The delivery of these important projects is essential to the future learning needs of our students and supports growth in the local economy.



Flexible learning spaces



A new library



A new hall



A canteen upgrade



A new administration area



A new outdoor learning area

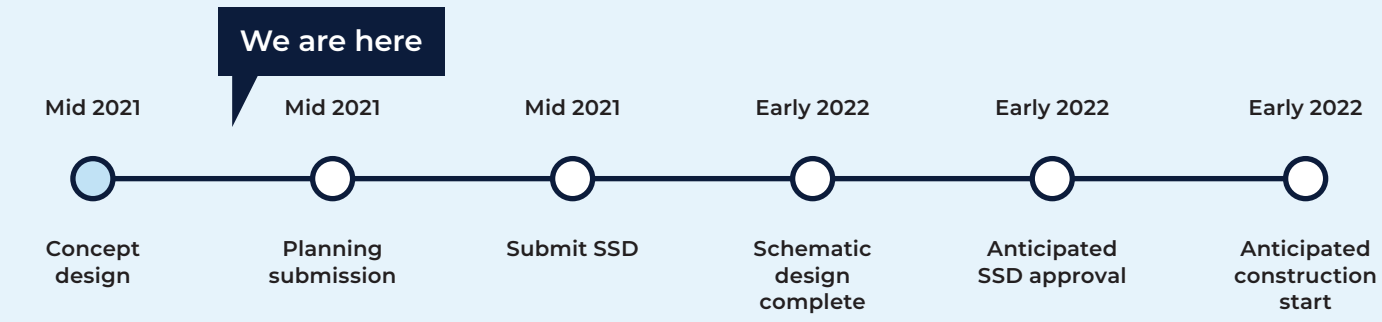


# Project overview

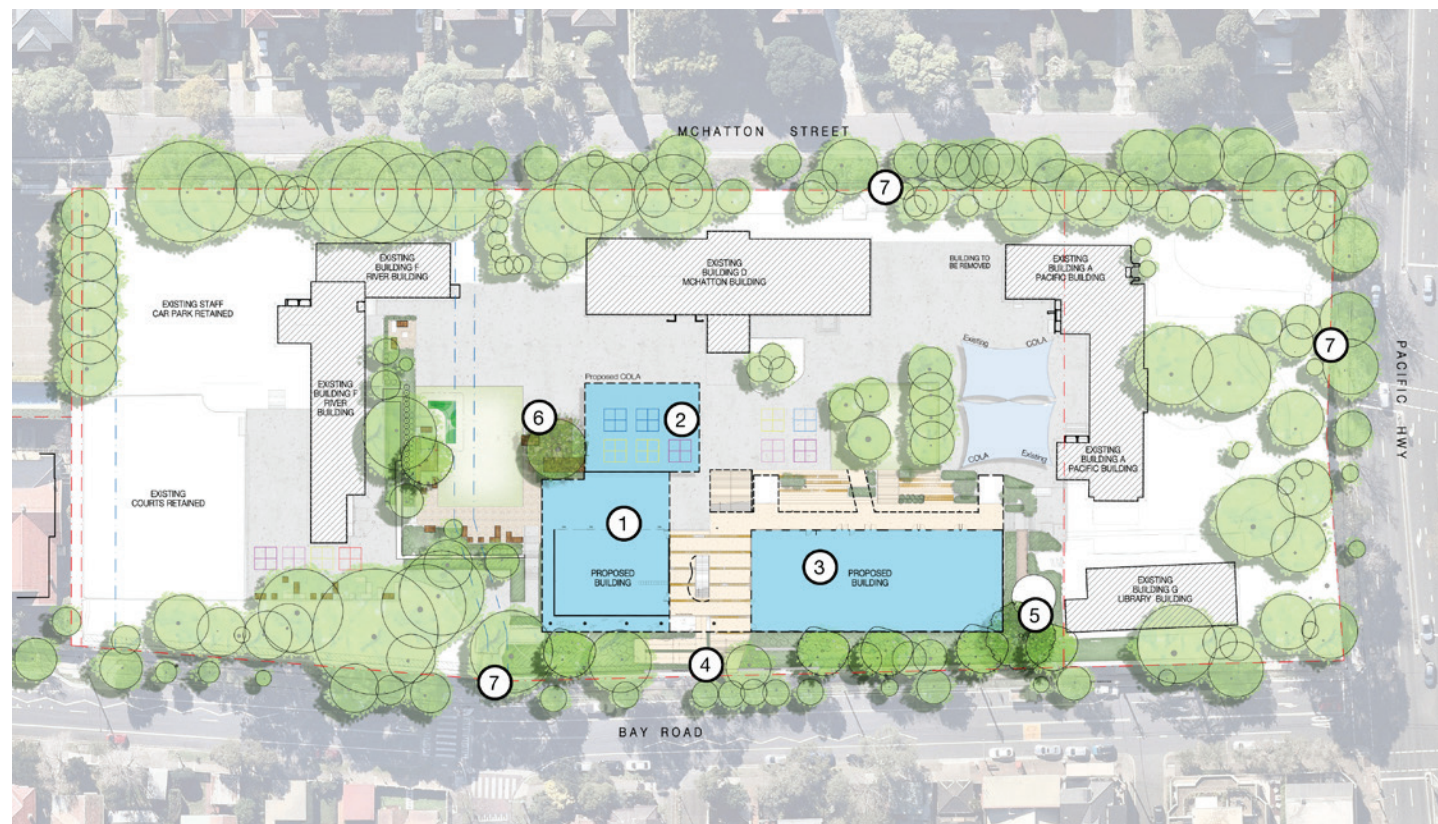
Planning is underway to fast track the upgrade of North Sydney Public School, as part of the NSW Government's COVID-19 Economic Recovery Plan. The initial concept design includes 19 flexible learning spaces, a new administration area, library and hall. It also features a new covered outdoor learning area, upgrades to the canteen and student amenities and a new entrance gate on Bay Road.

These new facilities will allow the school to accommodate up to 1012 students.

## Indicative timeline



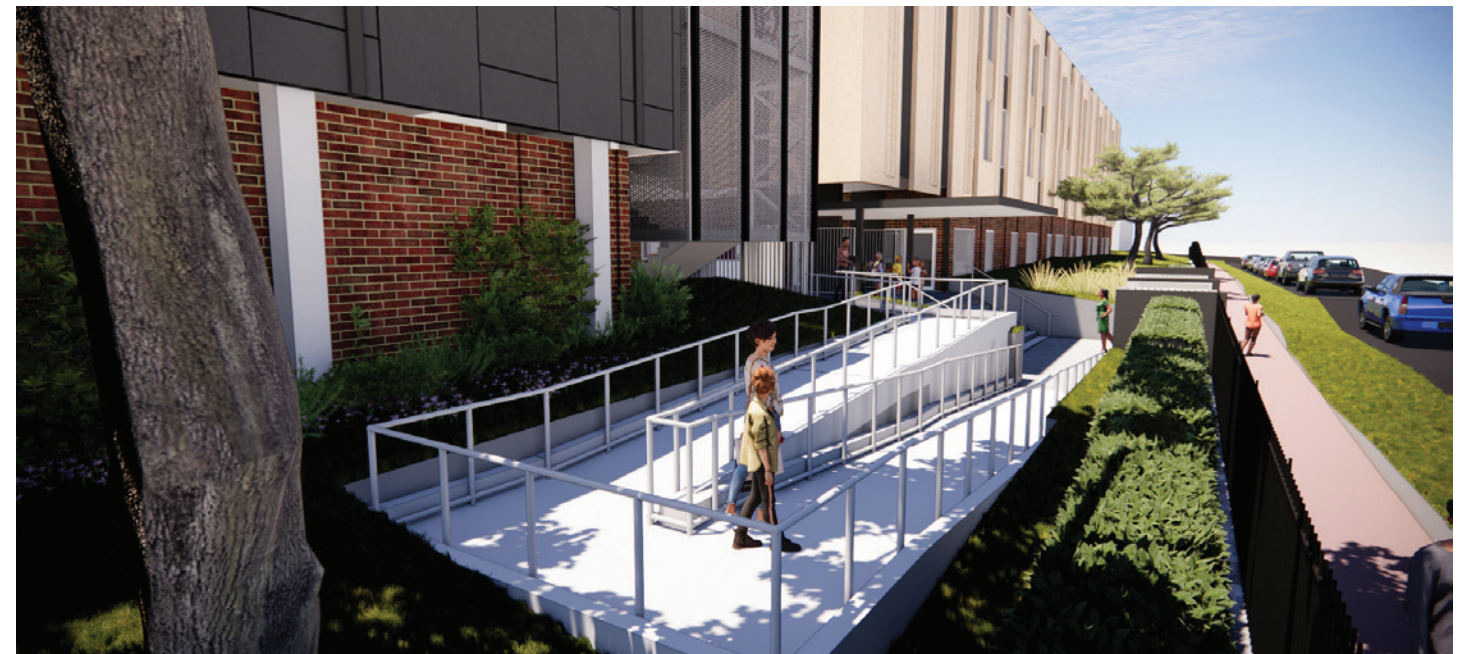
## Site plan



Proposed site layout for the North Sydney Public School upgrade

### LEGEND

- ① New multipurpose hall
- ② New covered outdoor learning area (COLA)
- ③ New administration, library and classroom facilities
- ④ New formalised accessible entry
- ⑤ Yarning circle with tree replenishment planting
- ⑥ Identified significant tree (tree 16) retained and protected
- ⑦ Existing heritage gate and fence retained



Artist impressions of the upgrade work planned for North Sydney Public School.



# Frequently asked questions

## What happens next?

The State Significant Development (SSD) application will be lodged with the Department of Planning, Industry and Environment (DPIE).

The DPIE will then place the application on public exhibition.

## What is an SSD application?

An SSD application is used for projects which have special significance to the people and State of NSW. The DPIE is responsible for the assessment of SSD applications.

## How can I find out more and provide feedback on the SSD application?

Following submission of the SSD application, you can find detailed information about the upgrade by going to the DPIE planning portal at [www.planningportal.nsw.gov.au/major-projects](http://www.planningportal.nsw.gov.au/major-projects).

Once on public exhibition, all feedback on the SSD application should be given to the DPIE.

## Are the artist impressions of the school's upgrade subject to change?

The designs currently on display of the upgrade work are concept designs. They will continue to progress through to schematic and detailed designs as the project progresses.

The designs are also being developed in consultation with key stakeholders as we work through the planning approval and tender process.

While some aspects of the design may change as we move through these processes, the overall approach to the upgrade and scope is likely to remain the same.

## Will the upgrade of the school accommodate more students?

The planned addition of new buildings to the school is to accommodate an increase in the number of students attending the school.

When the work is complete in early 2023, the school will have the capacity to accommodate up to 1000 students. This increase is subject to approval of the SSD application.

## What are the temporary school arrangements whilst the work is underway?

To prepare for the upgrade to the school, we are working closely with the school's principal to ensure continuity of student learning.

We will share further advice on any changes to school operations before the upgrade starts.

## When is construction due to start?

Construction is anticipated to start in early 2022, pending planning approval.

## Will the upgrade recognise the heritage fence and gates?

Yes. We will continue to work in close consultation with the Principal and a Heritage Consultant to preserve the heritage features, including the fence and gate on Bay Road and others on the school's grounds.

## Virtual Information Session

The virtual information session is available from Thursday 9 am 19 August to Monday 5 pm 23 August.

The session includes a Contact Us form to provide feedback on the upgrade work.

You can access the session from: [edu.nsw.link/North-Sydney-PS-Upgrade](http://edu.nsw.link/North-Sydney-PS-Upgrade)

## For more information contact:

School Infrastructure NSW  
Email: [schoolinfrastructure@det.nsw.edu.au](mailto:schoolinfrastructure@det.nsw.edu.au)  
Phone: 1300 482 651  
[www.schoolinfrastructure.nsw.gov.au](http://www.schoolinfrastructure.nsw.gov.au)