

Artist impression of North Sydney Public School upgrade

North Sydney Public School

Project update | October 2023

Investing in our schools

As part of the NSW Government's plan to rebuild essential services, the 2023-24 Budget is delivering a record \$8.8 billion for new and upgraded schools. This targeted investment in growing communities will ensure working families get access to a world class public education.

Project overview

The upgrade of North Sydney Public School will deliver 19 new flexible learning spaces, a new administration area, library, hall, covered outdoor learning area and a new entrance gate on Bay Road. The refurbishment of the school's existing canteen and student amenities are also included in the upgrade works.

Progress summary

We are excited that the new buildings I and J are almost finished and will be ready for the school to use for Week 2 Term 4 2023. This includes classrooms, the hall, administration areas and the covered outdoor learning area. Please see pages overleaf to see the layout plans of the new buildings.

Work on some additional scope items will continue throughout Term 4 2023.

Next steps

From Week 2 Term 4 2023, Monday 16 October 2023, 4 classrooms will operate from the new buildings. The remaining classes and the library will move into the new buildings at the principal's discretion, in order to minimise learning disruption towards the end of the school year.

From Week 2 Term 4 2023, the new main entrance to the school will be from Bay Road. Staff and students can continue to use the secondary entries on McHatton Street and the Pacific Highway.

State Significant Development Application - modification

Final works are required to take place on the project which are outlined below. A modification to the State Significant Development Application for this project for final work to take place is under review by the Department of Planning and Environment.

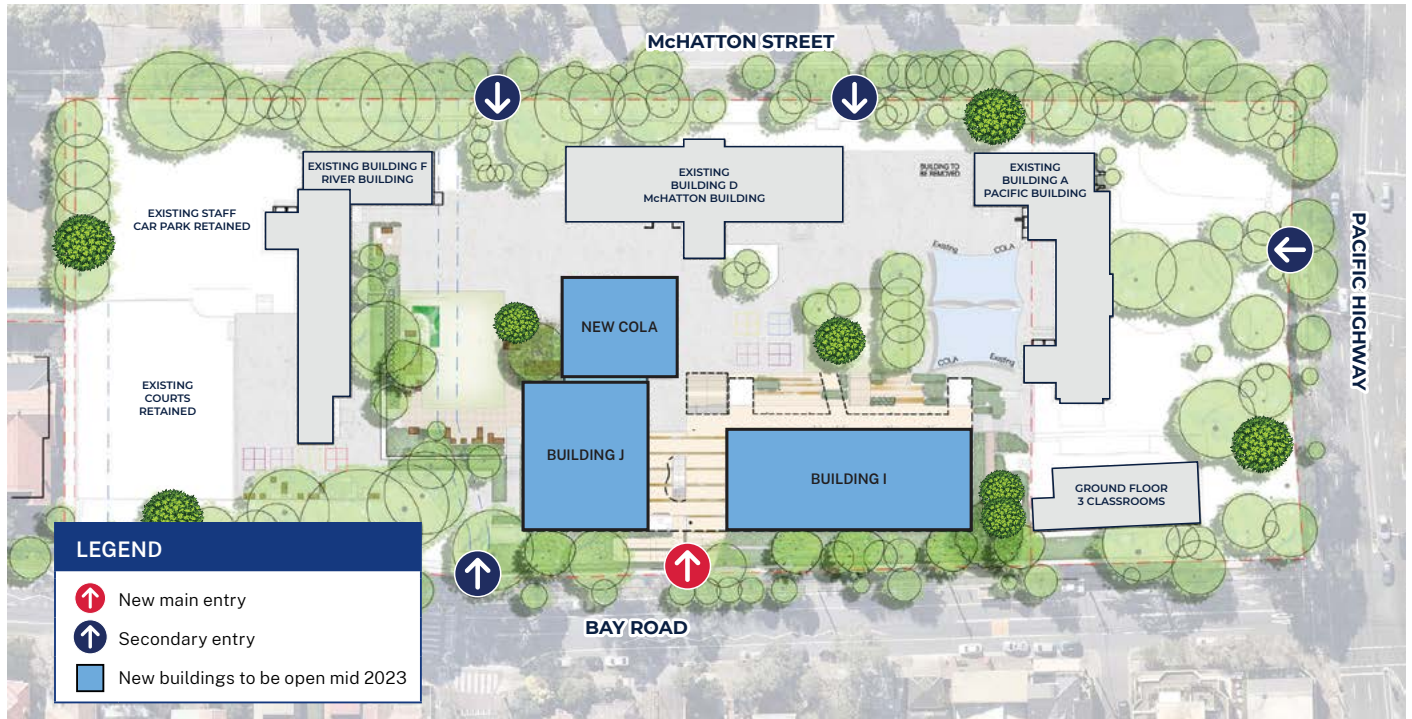


Pending approval, the final works that are expected to be finished later in 2023 include:

- putting in playground equipment in the area next to Building J
- finishing the Yarning Circle next to Building A
- putting in tensile mesh to levels 2 and 3 of Building I
- the historical damage to the heritage fence being rectified.

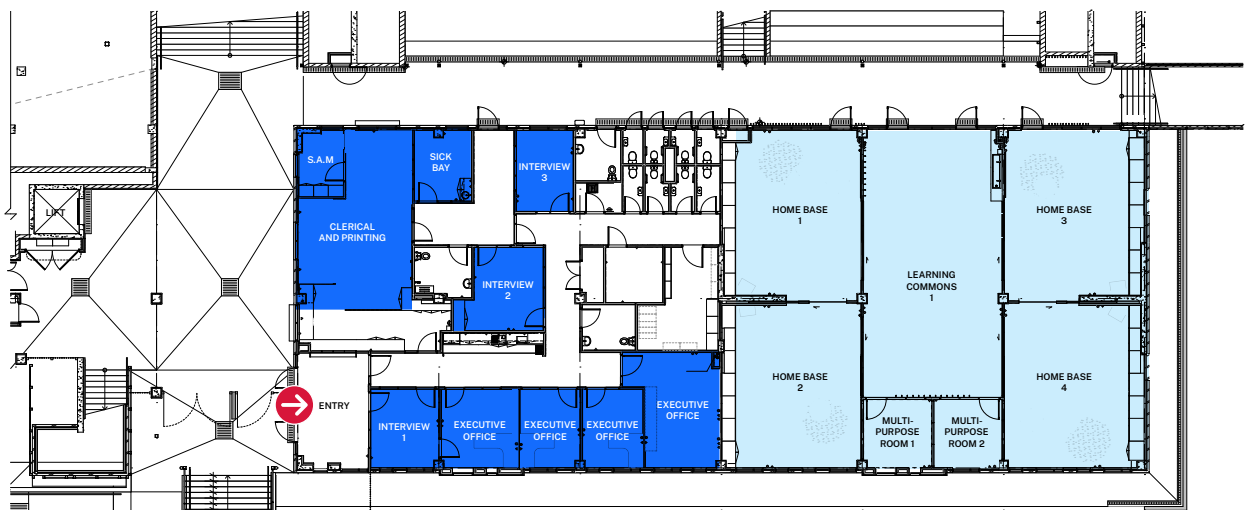
To have your say on the modification, please visit the Department of Planning and Environment’s website: www.planningportal.nsw.gov.au.

Site map

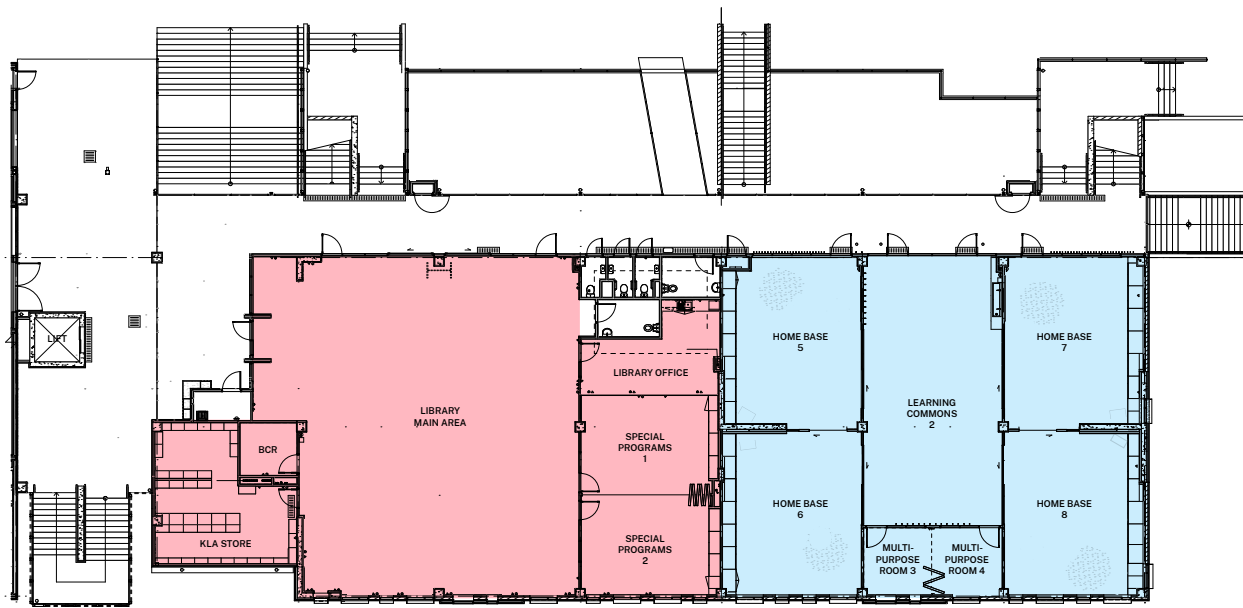


Layouts of new buildings

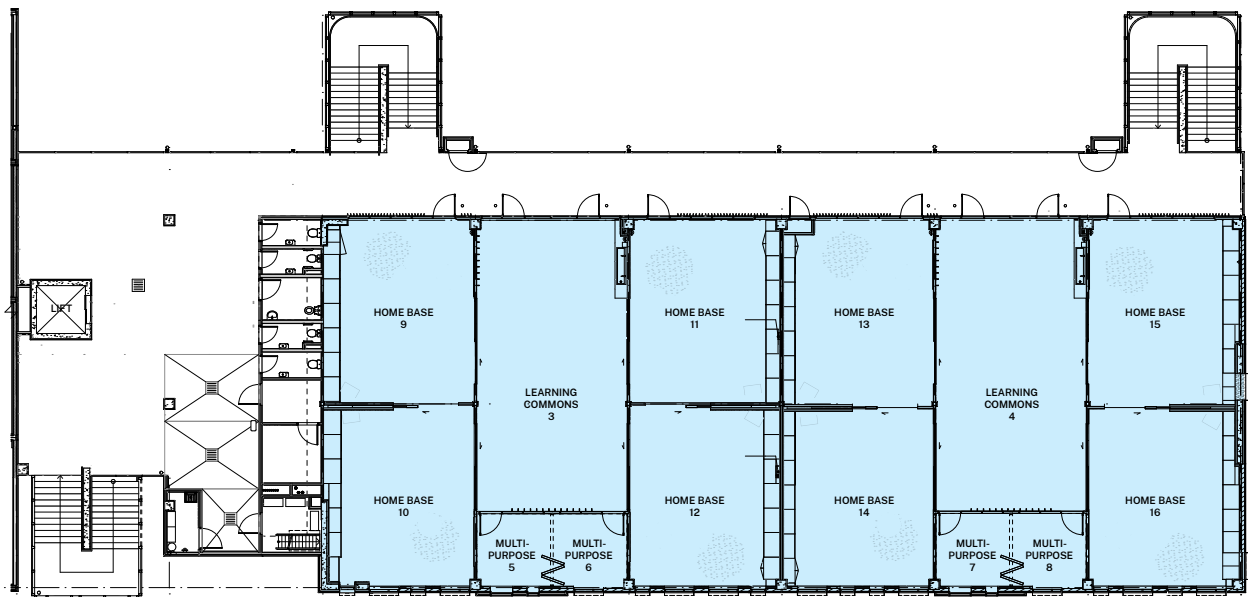
Building I – Level 1



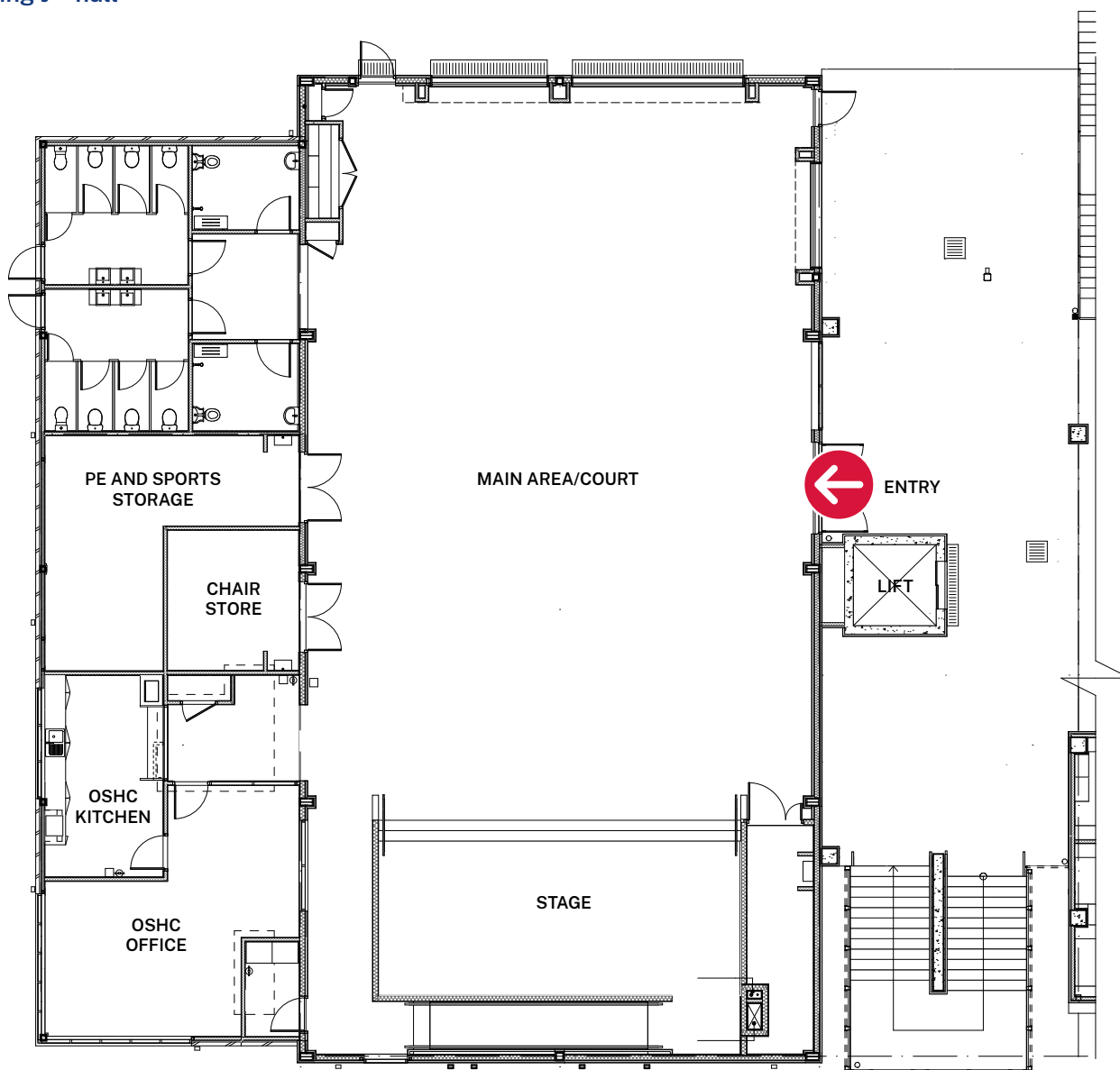
Building I – Level 2



Building I – Level 3



Building J – hall



For more information

If you have questions or concerns about these works contact School Infrastructure NSW 1300 482 651 or via emailing schoolinfrastructure@det.nsw.edu.au.