

North Sydney Public School

Information pack | May 2022



Artist impression of the North Sydney Public School upgrade. Indicative only.

The NSW Government is investing \$7.9 billion over the next four years, continuing its program to deliver 215 new and upgraded schools to support communities across NSW. This is the largest investment in public education infrastructure in the history of NSW.

The NSW Department of Education is committed to delivering new and upgraded schools for communities across NSW. The delivery of these important projects is essential to the future learning needs of our students and supports growth in the local economy.



Flexible learning spaces



A new library



A new hall



A canteen upgrade



A new administration area



A new outdoor learning area

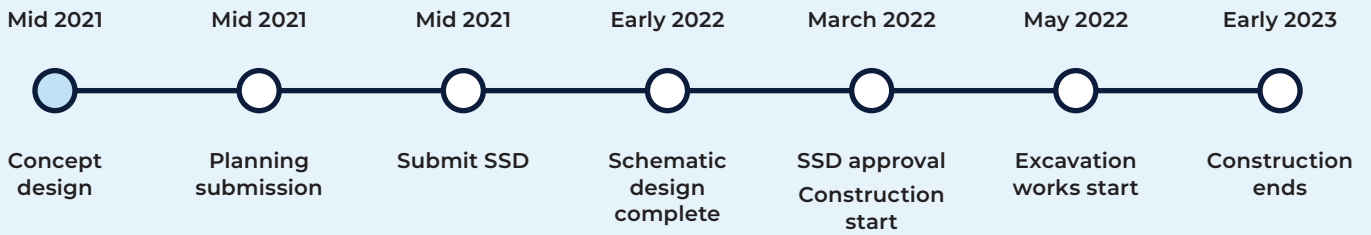
Project overview

The upgrade of North Sydney Public School is funded by the NSW Government's COVID-19 Recovery Plan to deliver students the latest educational facilities and support the growing community. The upgrade will deliver 19 new flexible learning spaces, a new administration area, library, hall, covered outdoor learning area and a new entrance gate on Bay Road. The upgrade will also refurbish the school's existing canteen and student amenities.

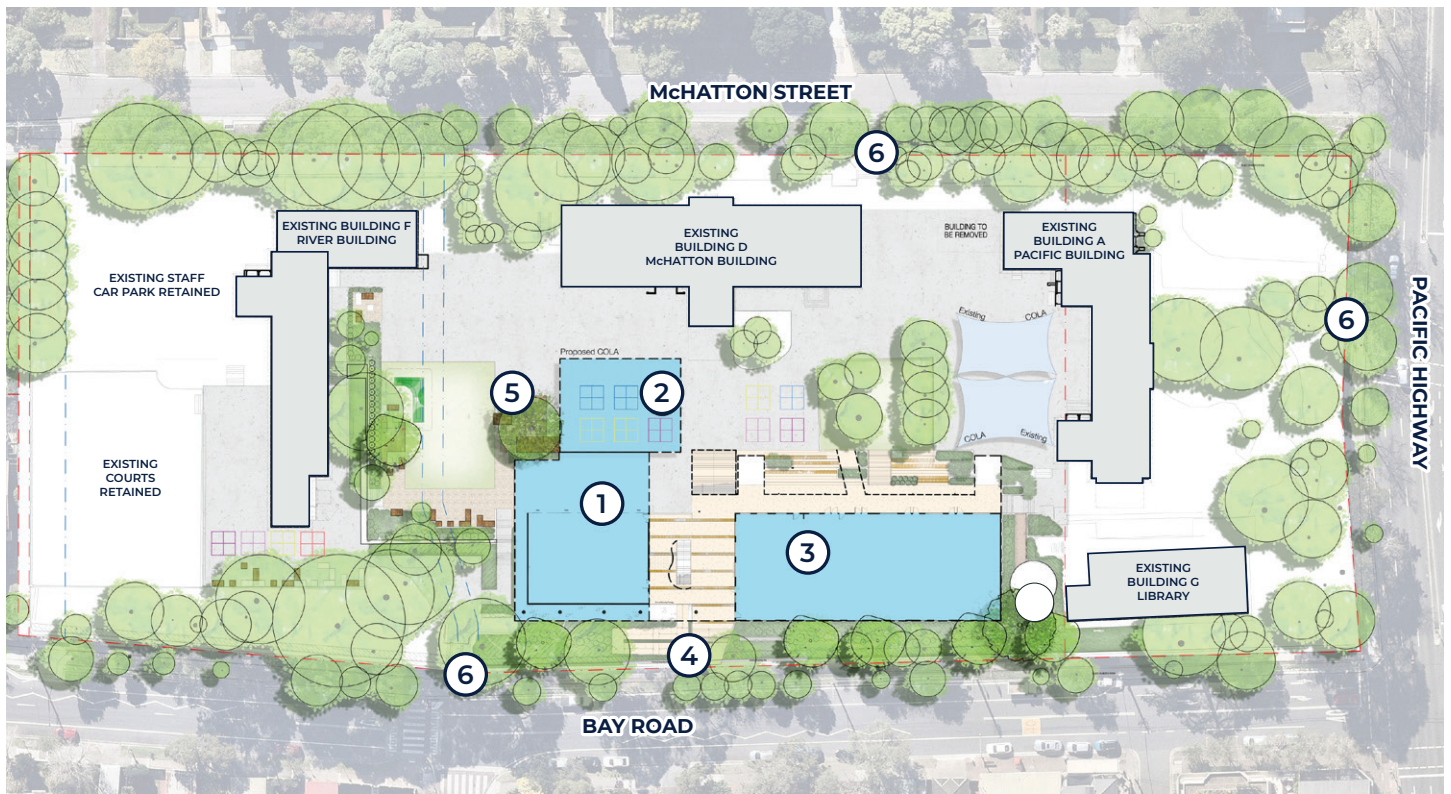
These new facilities will allow the school to accommodate up to 1000 students.

Indicative timeline

We are here

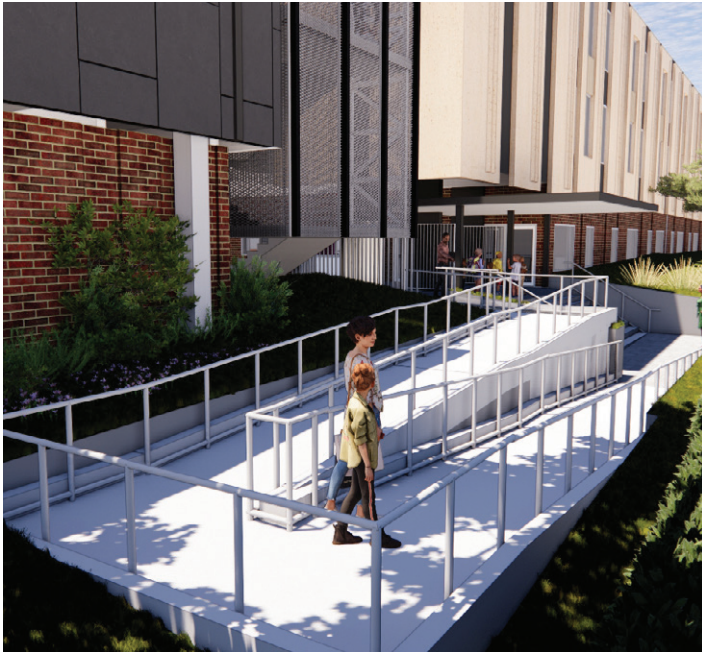


Map of completed works



LEGEND

- 1** New multipurpose hall
- 2** New covered outdoor learning area (COLA)
- 3** New administration, library and classroom facilities
- 4** New formalised accessible entry
- 5** Significant tree
- 6** Existing heritage gate and fence retained



Artist impressions of the upgrade of North Sydney Public School

Frequently asked questions

Construction works

How are safety, noise and dust being managed during the works?

The health and safety of students, staff and residents is our highest priority. All work is being completed in accordance with SafeWork NSW regulations and Australian Standards. Noise and dust control measures have been implemented to meet the project's planning approval requirements and to ensure school activities are not disrupted. These include hoardings and secure fencing installed around the work zone to reduce noise and dust. Dust from construction works will be watered down as required.

What machinery is being used during the works?

During the early works, excavators are removing soil from the works zone. The next stage of works will require the installation of a crane in the works zone to transport materials into the site. The crane's operation will follow strict safety standards and it is not anticipated to be noisy. Parents, carers and the community will be notified before the crane is installed.

The demolition of the Haven Building and Lady Hay Hall has been completed and no further jackhammering will occur in the works zone during school hours.

Were trees removed as part of these works?

A small number of trees located on Bay Road have been removed to accommodate the new buildings. Approval to remove these trees was obtained as part of the project's State Significant Development application. Part of this application includes a detailed landscape plan to plant more trees than are being removed.

What are the construction hours?

All works will take place between 7 am and 6 pm Monday to Friday and 8 am and 1 pm Saturdays. No work will take place on Sundays or public holidays unless otherwise notified.

Temporary arrangements

How have the play spaces changed to accommodate the works zone?

To accommodate the temporary reduction in play space due to the works zone, the school is continuing to operate its split timetable which began in 2021. The split timetable for K-2 and 3-6 students ensures students have the space to move and play safely across all three playgrounds.

How does the temporary vehicle access pathway to the work zone operate?

During early works, deliveries to the work zone during school hours are being made using a temporary vehicle access pathway in the 3-6 playground area. The pathway is securely separated with temporary fencing and managed by traffic controllers in coordination with school staff on a roster. This temporary access pathway will be in use until a separate construction vehicle access pathway can be installed on Bay Road.

What other temporary arrangements are in place during construction?

A temporary canteen has been installed between the McHatton and Pacific Buildings while the existing canteen is being refurbished. The upgraded canteen will open in Term 3 2022.

The Bay Road student entrance gate is temporarily closed as it is located within the work zone. The McHatton Street and the Pacific Highway gates remain open for student entry.

A small number of on-street parking spaces and the bus stop on Bay Road will soon be temporarily removed to accommodate construction vehicle access into the works zone. A temporary bus stop will be put in place approximately 150 metres south of the work zone. There is no change to staff parking facilities on school grounds.

Will the heritage buildings, fences and gates be retained?

Yes, the heritage buildings, fences and gates will be retained. The design of the new main entrance gate on Bay Road will be in keeping with the existing heritage fence. The Bay Road heritage fencing removed for the new construction vehicle access pathway will be reused to repair damaged heritage fencing elsewhere at the school.

Why was temporary fencing used in the playground near McHatton Street?

Recently power to the River Building was disrupted and needed to be reinstated. Temporary fencing was installed between the Pacific Building, McHatton Building and the River Building while new underground power cables were installed. This work is now complete and the temporary fencing has been removed.

Frequently asked questions

School Operations

Is the school using off-site locations during the works?

Off-site locations are not required as the school is fully operational with all existing classrooms in use. As the building works progress, the school will adjust its operations to ensure continuity in student learning.

During Terms 2 and 3, Stage 3 students will visit the Waverton Oval each Friday for sporting activities and students in Stages 2 and 3 will participate in PSSA sports at various locations, weather permitting.

How is the increase in vehicle traffic being managed in McHatton Street?

North Sydney Council has been contacted to ensure parking rangers regularly patrol the area to limit illegal parking and to assess the traffic in McHatton Street. Where possible, trucks and other vehicles used for the upgrade works are being scheduled to avoid drop-off and pick-up times.

How can parents and carers assist with traffic management on McHatton Street?

As traffic and parking continue to be a concern for the safe operation of the school, parents and carers are asked to drive with caution and consideration. To improve congestion at drop-off and pick-up, can parents and carers:

- park in the surrounding streets and walk to the school gate
- enter McHatton Street from the Pacific Highway and leave via Crows Nest Road
- please be patient. Your child is being supervised by teaching staff and is safely inside the school's gates
- be respectful of other parents and neighbours. Please do not double park or park in or across our neighbour's driveways or do u-turns on McHatton Street.

Will the school have a new main entrance after construction is complete?

Yes, when the work is completed the school will have a new main pedestrian entrance on Bay Road. The new entrance will include a student pick-up and drop-off zone on Bay Road to supplement the existing McHatton Street pick-up and drop-off zone.

Is after school care operating during the works?

Yes. KU Dem Care and KU Bay Road are fully operational during the works. KU Dem Care will now access classroom spaces in the Pacific and Bay buildings, as well as their regular space opposite the old library. KU Bay Road space in the River building remains unchanged. Please contact KU for information regarding drop-off and pick-up procedures.

Communication activities

How are we engaging students during the works?

Build updates for students are now part of weekly school assemblies. During these updates, staff will share interesting facts and information about the works. To inform the updates, teachers will collect questions from students and endeavour to answer all questions. Students can also view the progress of the works from the 'viewing deck' – the staircase to Year 3 classrooms.

How are the works being communicated to parents, carers and the community?

All communication materials produced by School Infrastructure NSW (SINSW) are issued via Schoolstream and these materials will soon be added to the school's website. The progress of the build is also detailed in a monthly summary for the P&C and will soon be profiled in the school's e-newsletter.

The SINSW website houses every piece of the communication collateral produced for the project and its State Significant Development application consent conditions. To view all communication materials produced for this project, visit:

www.schoolinfrastructure.nsw.gov.au/projects/n/north-sydney-public-school-upgrade.html#library-tab

Parents and carers can also ask questions or raise concerns by contacting SINSW using the details below.

For more information contact:

School Infrastructure NSW
Email: schoolinfrastructure@det.nsw.edu.au
Phone: 1300 482 651
www.schoolinfrastructure.nsw.gov.au