



An example of a new flexible learning space delivered by School Infrastructure NSW

# Newcastle Education Campus

Project update

February 2022

## Investing in our schools

The NSW Government is investing \$7.9 billion over the next four years, continuing its program to deliver 215 new and upgraded schools to support communities across NSW. This is the largest investment in public education infrastructure in the history of NSW.

The NSW Department of Education is committed to delivering new and upgraded schools for communities across NSW. The delivery of these important projects is essential to the future learning needs of our students and supports growth in the local economy.

## Newcastle Education Campus

The NSW Government 2021/2022 Budget includes funding for the Newcastle Education Campus (NEC) which will be located on the main Newcastle High School site.

Masterplanning for the site has been completed and includes upgrades to the existing high school and expanded facilities suitable for shared use with the community. Additionally, space has been allocated for a future new primary school. This will be subject to enrolment demand.

A business case seeking government approval to proceed with the upgrade to the high school has been submitted. The preferred option includes:

- new flexible learning spaces to support future student enrolment growth
- a new hall and library
- new science laboratories, kitchens, canteen and student facilities
- new support class facilities.

## Next steps

- Consideration of the business case.
- Ongoing development of the design in consultation with representatives from the Department of Education and Newcastle High School, architects, planners and design professionals.
- Joint-use opportunities are being considered for the provision of facilities that can be shared with the community.

## For more information contact:

School Infrastructure NSW  
Email: [schoolinfrastructure@det.nsw.edu.au](mailto:schoolinfrastructure@det.nsw.edu.au)  
Phone: 1300 482 651  
[www.schoolinfrastructure.nsw.gov.au](http://www.schoolinfrastructure.nsw.gov.au)

## Newcastle Education Campus

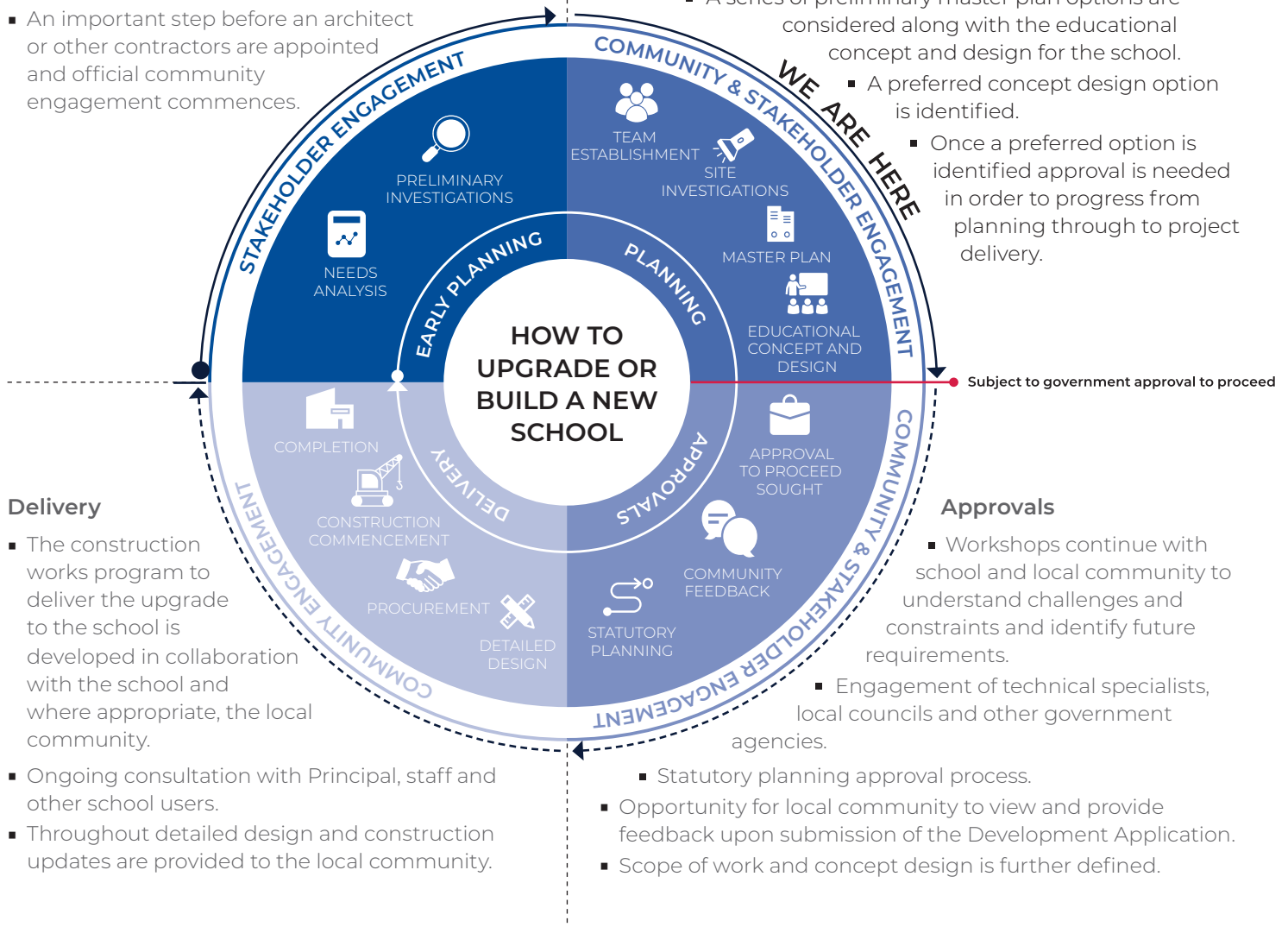
The information below takes you through the journey of how to upgrade, or build a new school

### Early planning

- Consideration and studies of demographic trends, education requirements, the condition of the existing school buildings, catchment boundaries, heritage requirements, transport links and partnership opportunities.
- Doing so means that we:
  - consider the needs of the local area now and into the future.
  - ensure the right school is designed for the community.
- An important step before an architect or other contractors are appointed and official community engagement commences.

### Planning

- Consultants such as architects and project managers are appointed.
- Investigation and review of site and development of master plan options.
- Master planning considers options for the general size, shape and form of buildings for a specific school site.
- A Project Reference Group (PRG) is established.
- Operational, educational and service delivery factors are understood and considered by the PRG.
  - A series of preliminary master plan options are considered along with the educational concept and design for the school.
    - A preferred concept design option is identified.
  - Once a preferred option is identified approval is needed in order to progress from planning through to project delivery.



### Delivery

- The construction works program to deliver the upgrade to the school is developed in collaboration with the school and where appropriate, the local community.
- Ongoing consultation with Principal, staff and other school users.
- Throughout detailed design and construction updates are provided to the local community.

### Approvals

- Workshops continue with school and local community to understand challenges and constraints and identify future requirements.
  - Engagement of technical specialists, local councils and other government agencies.
- Statutory planning approval process.
  - Opportunity for local community to view and provide feedback upon submission of the Development Application.
  - Scope of work and concept design is further defined.

### For more information contact:

School Infrastructure NSW  
 Email: [schoolinfrastructure@det.nsw.edu.au](mailto:schoolinfrastructure@det.nsw.edu.au)  
 Phone: 1300 482 651  
[www.schoolinfrastructure.nsw.gov.au](http://www.schoolinfrastructure.nsw.gov.au)

