



# NEWCASTLE HIGH SCHOOL

200 PARKWAY AVENUE, WILLIAMTOWN NSW

## ARCHIVAL RECORDING REPORT

Prepared for Hansen Yuncken

19 June 2024

Final

## DOCUMENT INFORMATION

---

### PROJECT DETAILS

**Project:** Archival Recording Report

**Project address:** 200 Parkway Avenue, Williamtown NSW

**Prepared by:** Nicci Foster and Felicity Smolenaers

**Organisation:** Austral Archaeology Pty Ltd

**Contact Details:** info@australarchaeology.com.au

**Prepared for:** Hansen Yuncken

**Project number:** 24011

### DOCUMENT HISTORY

Version No.	Version Type	Issue Date	Authored By	Approved By	Date Approved
1	Draft	13/06/2024	NF, FS	DM	13/06/2024
2	Final	19/06/2024	NF, FS	DM	19/06/2024

### DISTRIBUTION OF COPIES

Version No.	Quantity	Issue Date	Issued to
1	1	13/06/2024	Hansen Yuncken
1	1	19/06/2024	Hansen Yuncken

#### *Copyright and Moral Rights*

*No part of this document may be reproduced or distributed in any form or by any means without prior permission from a representative of Austral Archaeology Pty Ltd. Austral Archaeology Pty Ltd also reserves the right to use documents and materials produced for this project for future presentations or publications, if required.*

*In the preparation of this report historical sources and other reference materials are acknowledged in text citations and in a separate section at the end of the report. Reasonable effort has been made to acknowledge and obtain permission from the relevant copyright owners.*



## Acknowledgement of Country

We respect and acknowledge the First Nations Peoples of the lands and waterways on which we live and work, their rich cultural heritage, and their deep connection to Country, and we acknowledge their Elders past and present.

## Cultural warning

Aboriginal and Torres Strait Islander readers are advised that this report may contain images or names of First Nations people who have passed away.



AUSTRAL  
ARCHAEOLOGY

## EXECUTIVE SUMMARY

---

Austral Archaeology Pty Ltd (Austral) has been commissioned by Hansen Yuncken (the Proponent) to prepare an Archival Recording Report (ARR) to satisfy the recommendation from EJE Heritage (2023) to record blocks B, I and P prior to their planned demolition for the redevelopment at Newcastle High School, 200 Parkway Avenue, Newcastle, New South Wales (NSW) [the Study Area].

The study area consists of Lot 1, DP 150725; Lot 1, DP 575171 and Lot 1, DP 794827. The location of the study area is shown in Figure 1.1 and Figure 1.2.

In preparation of this report, Heritage NSW were contacted regarding the *Guidelines for Photographic Recording of Heritage Items using Film or Digital Capture* (NSW Heritage Office 2006) [The Photographic Recording Guidelines] due to their age and the advancement of digital photography. Heritage NSW advised that the Photographic Recording Guidelines should be used as guidance only. This advice has been used to ensure the recording met the recommendations of EJE Heritage.

In addition to the guidelines, the author of this report sought advice from Heritage NSW in relation to best practice for the recording. This advice has informed the approach to the archival recording of the item, and the way it has been presented within this report. This ARR consists of a photographic recording of the exterior and interior of the item as well as views to and from it. Due to the high school being in use at the time of recording, locker rooms were not recorded in detail. The recording is a true representation of the current condition of the item. Aerial images, the direction, floor and description of the images captured should provide the reader a thorough understanding of the item at the time of recording.

The purpose of this ARR is to compile a photographic record of the heritage values within the study area, including the recording of the aesthetic values of the internal and external structures of blocks B, I and P within the study area in advance of the construction works.

### PROPOSED WORKS

The scope of works described in this section is taken from plans and information provided by the Proponent. The main components of the proposed development that need to be considered as part of this project are identified as follows:

- Demolition of 8 existing buildings
- Relocation of Block H approximately 50 metres south.
- Construction of a new 3 storey Learning Hub facility building, including a new library, canteen, covered outdoor learning area, support learning unit, general learning spaces, hospitality teaching spaces, and science labs.
- Construction of a new Multipurpose Facility including a gymnasium, stage, fitness lab, flexible learning spaces, outdoor courts, and end-of-trip (EOT) facilities.
- Internal Refurbishment works within the existing administration building on Parkway Avenue to form a new student hub.
- New student entry from Parkway Avenue.

### SIGNIFICANCE OF THE ITEM

The study area contains a high school with fields and buildings that show the phases and development of the school. The school has a complex history of prior single-sex education and an amalgamation in the 1970s of 2 separate boys' and girls' high schools to form Newcastle High School.



The site is an item of local environmental heritage and listed under Schedule 5 of the *Newcastle Local Environmental Plan 2012* (Newcastle LEP) as “Newcastle High School” (Item I174) and the southern portion of the site is also located within the “Hamilton South Garden Suburb” HCA (Item C3).

The site curtilage (SHI #5065645) and various buildings (SHI #5065628) are also listed on the register of heritage items maintained by the Department of Education in accordance with Section 170 (DoE S170 Register) of the Heritage Act.

The current statement of significance for the complex of buildings is:

*Newcastle High is associated with the genesis of public secondary education in Newcastle, and indeed in New South Wales, from its establishment in 1906 on the Tyrrell Street site, now the Newcastle East Public School. While the 1930 Parkway Avenue buildings are the most architecturally refined, indeed as good an example of school architecture as any in the state, the 1932 Dumaresq Street building is also of value, as are some of the other buildings from more recent times. The campus is of considerable local or regional significance due to the huge number of students and teachers who have passed through its doors, as well as historic and aesthetic value at the local level. It may also be considered to have some historic and aesthetic value at the State level as representative of its type (SHI ID# 2173871).*

In addition to the SHR statement of significance, EJE Heritage within their SoHI, listed the 3 buildings to be recorded as significance with the following statements for each:

*Block B 1964 Music, H.S.I.E, Food Tech and Textiles: demonstrates significance due to its design by the School Division of the Government Architect's Office during a particularly significant period of its operation. Block B is an unusual and rare variation upon the way that the design office was progressing toward the use of continuous curtain walls. Block B having its façade regularly interrupted by brick verticals containing service risers. It is of interest under the research and representative criteria due to its unusual design. Having contained the music classrooms, it also demonstrates significance due to its associations with the members of the band Silverchair who are all alumni of the school. Block B is considered to have moderate to high significance in a local context.*

*Block I 1976 Canteen and Amenities: is the only building on the overall school site constructed specifically for the amalgamation of the two former schools and the transition to Co-ed enrolment. It demonstrates moderate significance for its associations to its designers, moderate significance aesthetically and technically for its unusual design and construction detailing, moderate significance for its rarity and representativeness as a significant variation to the standard canteen and amenities block. It has the potential to demonstrate moderate significance in a local context.*

*Block P c1950 Admin Building: is rare within the site of Newcastle High School as being the last remnant of evidence of a live-in caretaker for the school. It assists Block C in the interpretation that Dumaresq Street used to travel through the school site (between the two original schools) on this alignment. It demonstrates only little significance in other criteria as it is a fairly run-of-the-mill late '40s to 1950 residence. It has been refitted for administration functions and is missing many of the elements which would identify its domestic origins. It has the potential to demonstrate moderate significance in a local context (EJE Heritage 2023).*

## ARCHIVAL RECORDING

An archival recording of Block B was undertaken by Elanor Pitt (Archaeologist, Austral) and Nicci Foster (Student Archaeologist, Austral) on March 11, 2024, with blocks I and P recorded by Nicci Foster and Brody Saccoccia (Archaeologist, Austral) on April 10, 2024. The information from this archival recording is outlined within this document. This ARR has been completed in accordance instructions provided by Heritage NSW and informed by the Photographic Recording Guidelines to ensure best practice. This report includes:

- A summary of the history of the item.
- Site description.
- Significance of the item.
- Photographic index.
- Photographic catalogue.
- Contact sheets.

## RECOMMENDATIONS

It is recommended that:

- 1) No further work is required in regard to the requirement within the recommendations for the undertaking of an archival recording of the extant condition of structural elements present within the study area.
- 2) Copies of this report should be lodged in a digital format with the City of Newcastle for archiving within the public libraries.

## CONTENTS

---

<b>EXECUTIVE SUMMARY</b>	<b>IV</b>
<b>CONTENTS</b>	<b>VII</b>
<b>1 INTRODUCTION</b>	<b>1</b>
1.1 BACKGROUND	1
1.2 PROPOSED WORKS	1
1.3 METHODOLOGY	4
1.4 PROJECT TEAM	4
1.5 ABBREVIATIONS	4
<b>2 HERITAGE CONTEXT</b>	<b>5</b>
2.1 INTRODUCTION	5
2.2 HISTORY OF NEWCASTLE HIGH SCHOOL	5
2.3 SITE DESCRIPTION	8
<b>3 COMPLIANCE WITH GUIDELINES</b>	<b>9</b>
3.1 DIGITAL AND PRINT MINIMUM REQUIREMENTS	9
3.2 CHECKLIST OF ARCHIVAL RECORDINGS	11
<b>4 PHOTOGRAPHIC ARCHIVAL RECORDING</b>	<b>12</b>
4.1 PHOTOGRAPHIC EQUIPMENT	12
4.2 PHOTOGRAPHIC INDEX	12
<b>5 REFERENCES</b>	<b>24</b>
<b>APPENDIX A – CONTACT SHEETS</b>	<b>25</b>

## FIGURES

Figure 1.1 Location of the study area	2
Figure 1.2 Study area in relation to cadastral boundaries	3
Figure 2.1 Newcastle High School established 1906 at Newcastle Public School (Source: Cultural Collections, University Of Newcastle Archives, NSW)	6
Figure 2.2 The Innocent Criminals, later known as Silverchair (Source: <a href="https://4therecordcom.home.blog/2020/07/27/silverchair-daniel-johns-1994-2018">https://4therecordcom.home.blog/2020/07/27/silverchair-daniel-johns-1994-2018</a> )	8



## TABLES

Table 3.1	Minimum requirements for digital photographic report	9
Table 3.2	Minimum requirements for printing of digital materials	9
Table 3.3	Checklist for archival recording	11
Table 4.1	Details of photographic equipment and operator	12
Table 4.2	Photographic index of photos taken during archival recording of Block B	12
Table 4.3	Photographic index of photos taken during archival recording of Block I	20
Table 4.4	Photographic index of photos taken during archival recording of Block P	22

# 1 INTRODUCTION

---

## 1.1 BACKGROUND

Austral Archaeology Pty Ltd (Austral) has been commissioned by Hansen Yuncken (the Proponent) to prepare an Archival Recording Report (ARR) to satisfy the recommendation from EJE Heritage (2023) to record blocks B, I and P prior to their planned demolition for the redevelopment at Newcastle High School, 200 Parkway Avenue, Newcastle, New South Wales (NSW) [the Study Area].

The study area consists of Lot 1, DP 150725; Lot 1, DP 575171 and Lot 1, DP 794827. The location of the study area is shown in Figure 1.1 and Figure 1.2.

In preparation of this report, Heritage NSW were contacted regarding the *Guidelines for Photographic Recording of Heritage Items using Film or Digital Capture* (NSW Heritage Office 2006) [The Photographic Recording Guidelines] due to their age and the advancement of digital photography. Heritage NSW advised that the Photographic Recording Guidelines should be used as guidance only. This advice has been used to ensure the recording met the recommendations of EJE Heritage.

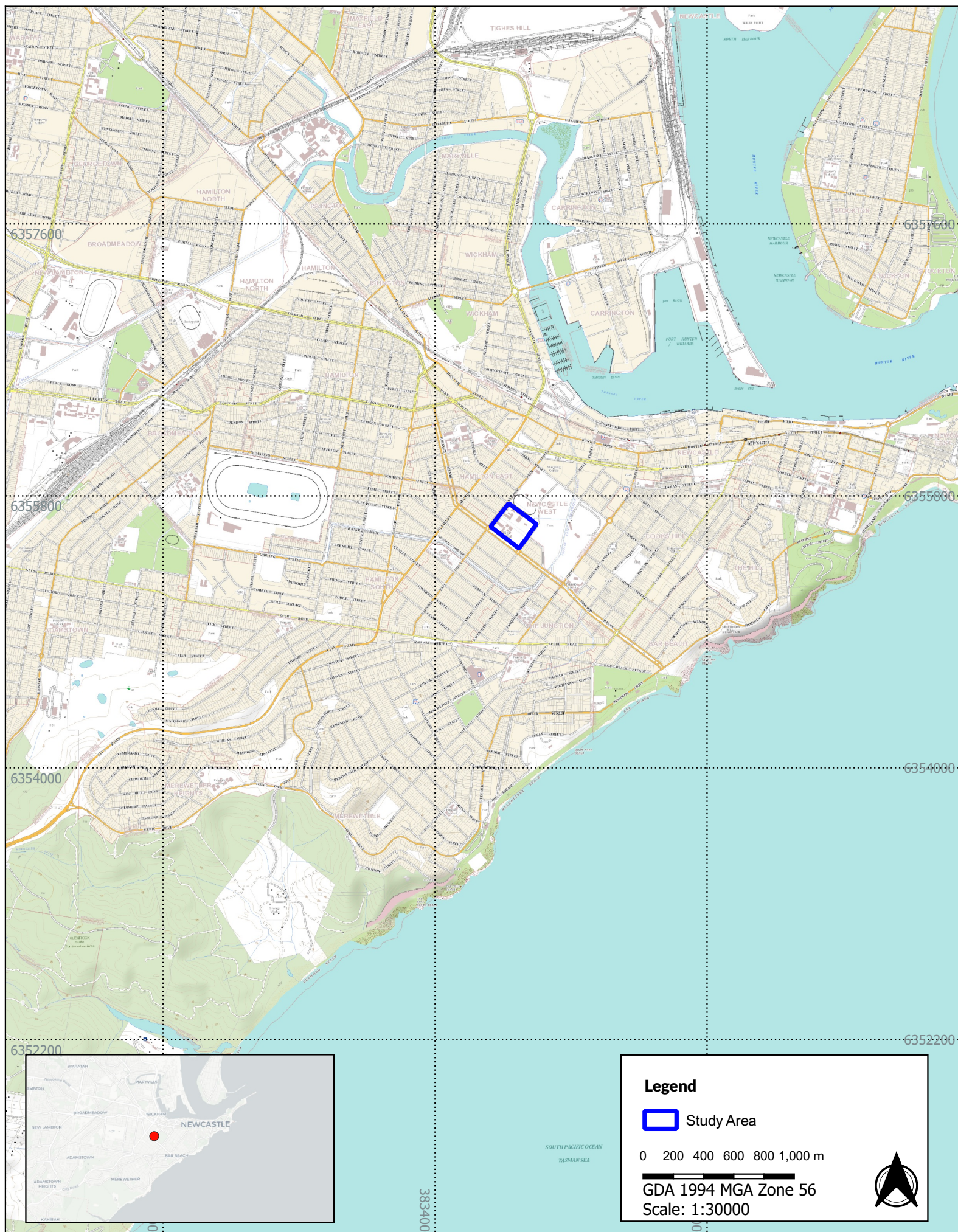
The purpose of this ARR is to compile a photographic record of the heritage values within the study area, including the recording of the aesthetic values of the internal and external structures of Blocks B, I and P within the study area in advance of the construction works.

## 1.2 PROPOSED WORKS

The scope of works described in this section is taken from plans and information provided by the Proponent. The main components of the proposed development that need to be considered as part of this project are identified as follows:

- Demolition of 8 existing buildings
- Relocation of Block H approximately 50 metres south.
- Construction of a new 3 storey Learning Hub facility building, including a new library, canteen, covered outdoor learning area, support learning unit, general learning spaces, hospitality teaching spaces, and science labs.
- Construction of a new Multipurpose Facility including a gymnasium, stage, fitness lab, flexible learning spaces, outdoor courts, and end-of-trip (EOT) facilities.
- Internal Refurbishment works within the existing administration building on Parkway Avenue to form a new student hub.
- New student entry from Parkway Avenue.





**Figure 1.1 - Location of the study area**

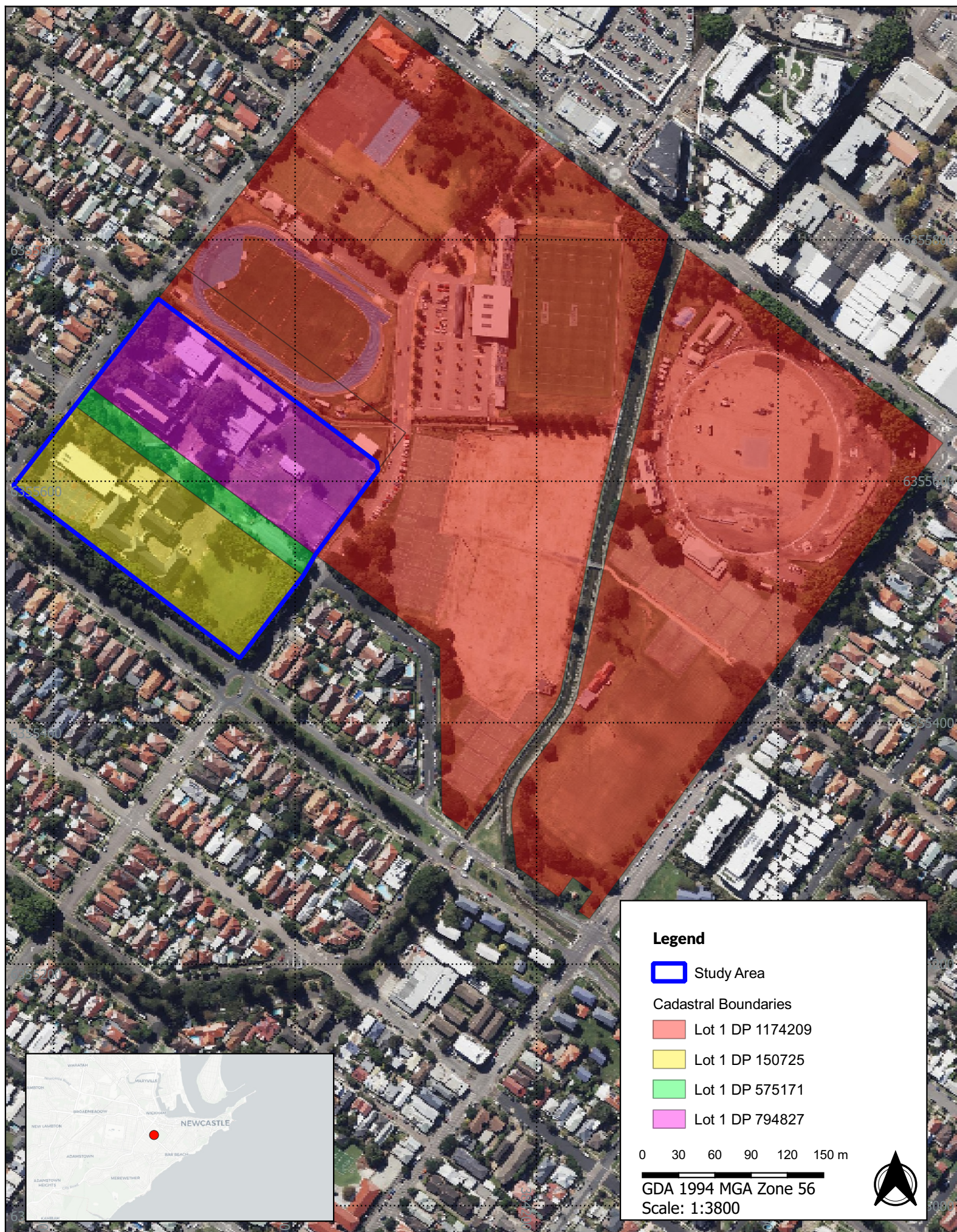
24011 - 200 Parkway Avenue, Williamtown

Source: NSW LPI Basemap, CartoDB Positron

Drawn by: ARH Date: 2024-06-06







**Figure 1.2 - Study area in relation to cadastral boundaries**

24011 - 200 Parkway Avenue, Williamtown

Source: NSW LPI Aerial, CartoDB Positron

Drawn by: ARH Date: 2024-06-06



### 1.3 METHODOLOGY

This ARR has been informed by the following guideline as a best practice approach to archival photographic recordings:

- Photographic Recording Guidelines (NSW Heritage Office 2006).

In preparation of this report, Heritage NSW were contacted regarding the *Guidelines for Photographic Recording of Heritage Items using Film or Digital Capture* (NSW Heritage Office 2006) [The Photographic Recording Guidelines] due to their age and the advancement of digital photography. Heritage NSW advised that the Photographic Recording Guidelines should be used as guidance only. This advice has been used to ensure the recording met the recommendations of EJE Heritage.

In addition to the guidelines, the author of this report sought advice from Heritage NSW in relation to best practice for the recording. This advice has informed the approach to the archival recording of the item, and the way it has been presented within this report. This ARR consists of a photographic recording of the exterior and interior of the item as well as views to and from it. Due to the high school being in use at the time of recording, locker rooms were not recorded in detail. The recording is a true representation of the current condition of the item. Aerial images, the direction, floor and description of the images captured should provide the reader a thorough understanding of the item at the time of recording.

### 1.4 PROJECT TEAM

The project was managed by Nicci Foster (Project Manager - Heritage, Austral). The archival recording was completed by Elanor Pitt (Archaeologist, Austral), Nicci Foster (Student Archaeologist, Austral) and Brody Saccoccia (Archaeologist, Austral). This ARR was authored by Nicci Foster, with historical background assisted by Felicity Smolenaers (Graduate Archaeologist, Austral). Figures were produced by Adam Hansford (GIS Operator, Austral). David Marcus (Director, Austral) reviewed the draft report for quality assurance and technical accuracy.

### 1.5 ABBREVIATIONS

The following are common abbreviations that are used within this report:

ARR	Archival Recording Report
Burra Charter	<i>Burra Charter: Australia ICOMOS Charter for Places of Cultural Significance 2013</i>
DA	Development Application
Heritage Act	<i>NSW Heritage Act 1977</i>
ICOMOS	International Council on Monuments and Sites
IDM	<i>Illawarra Daily Mercury</i>
NSW	New South Wales
SHR	State Heritage Register
Study Area	30 Bourke Street, North Wollongong, New South Wales
Photographic Recording Guidelines	<i>NSW Heritage Branch Guidelines for Photographic Recording of Heritage Items using Film or Digital Capture</i>
The Proponent	Hansen Yuncken

## 2 HERITAGE CONTEXT

---

### 2.1 INTRODUCTION

The following section provides a concise history of the item as well as a description of the site.

### 2.2 HISTORY OF NEWCASTLE HIGH SCHOOL

The following description of the development of Newcastle High School has been quoted from the Environmental Impact Statement for the Newcastle Education Campus by Gyde (2023).

*Newcastle High School was established in 1906 within the campus of the Newcastle East Public School. The primary school relocated in 1911 and the High School expanded to 286 students by 1912. Government policy of the time was to create segregated schools in locations within sufficient population, and this was seen to be the case in Newcastle. In November 1925, the Government purchased the southern portion (Parkway Avenue to Dumaresq Street) of the current school site. Two years later it obtained the northern portion of the site by compulsory acquisition of a section of National Park. It was intended that separate boys and girls schools would be constructed on the site.*

*The girls school was constructed first and consisted of Buildings A, K and L. The foundation stone was laid by D.H Drummond Minister for Education in December 1928 and the school was officially opened in March 1930...*

*Building A contains the foundation stone and is the main frontage of the school, presenting a grand entrance to Parkway Avenue. The building is two-storey in a symmetrical U shape. Modifications to the building have occurred including demolition of the single storey demonstration room in 1964 to connect Block A to Block B. In 1976, when the Newcastle Girls' High School was refitted to become co-educational, a major internal renovation was undertaken which included new internal walls and replacement of the slate roof with terracotta tiles. The SoHI concludes that Building A is typically in good condition with the only obvious dilapidation being paint.*

*Building L was constructed as an assembly hall with a capacity of 545 students. It included the detailing which was applied to Building A and has stuccoed entrances and window surrounds.*

*Building K was a gymnasium and constructed of brick with slate roof to match the other buildings. The building had large sliding doors on its southern façade which allowed the gym floor to open onto a wide verandah. It contained the school's first canteen, P.E instructor's office, locker rooms, shower and lavatories. Its external finish was simpler in detail than Building A and L.*

*Building H is a portable building having been introduced circa 1954 and already relocated within the site at least once.*

*Plans for Building C located on the allotment north of Dumaresq Street were prepared and in a departure from the previous intent, was not for a Boys High School but for the Newcastle Central Domestic Science School. The building was designed in a simpler but still impressive style.*



*A portion of the site is located within the Hamilton South 'Garden Suburb' Heritage Conservation Area (HCA). The HCA is significant to the local community for the surviving evidence of an early 20th Century subdivision pattern made up of single dwellings on large 'suburban' style allotments generally over 600 [metres<sup>2</sup>]. The area has associational significance with the eminent Australian architect Sir John Sulman (Gyde 2023, pp. 77–78).*



**Figure 2.1** Newcastle High School established 1906 at Newcastle Public School (Source: Cultural Collections, University Of Newcastle Archives, NSW)

In the 1950s Block P, the Caretaker's Cottage and now the Aboriginal Cultural Centre, was constructed after funds from the war were released for building and infrastructure, though it took pressure from the schools' P&C for the construction to begin (EJE Heritage 2023). Block B came later in 1964 and was the first major addition to the Newcastle Girl's High School, undergoing modifications in 1976 to allow the school to change to Co-ed (EJE Heritage 2023, p. 25). The canteen and amenities block I, was constructed in 1976 to also cater for the change to Co-ed.

Newcastle High School fostered and encouraged the interests and talents of many of its students, with many going forward to make names for themselves in their respective industries. The following is quoted from the Statement of Heritage Impact prepared by EJE Heritage in 2023:

*between 1979 and 1985, Miranda Otto received secondary education at the school. She was living with her mother in Newcastle but spent weekends and holidays with her father in Sydney where she developed her interest in acting. After graduating, Otto secured a number of roles in small stage productions and then Australian made films. She received several nominations for Australian Film Institute or Film Critics Circle of Australia Awards before she received her first role in a Hollywood Film: "What Lies Beneath" from the year 2000. She has received many awards for her acting inclusive of a Logie Award for her portrayal of Lindy Chamberlain in the Australian drama miniseries "Through My Eyes: The Lindy Chamberlain Story"*

*Belinda Clark member of the Australian Women's Cricket Team also attended Newcastle High School during the 1980s. She played on the Girls' Cricket teams while at Newcastle High during the week and for the Gordon District Cricket Club on the weekends. She debuted on the Australian Team in 1991 against New Zealand (EJE Heritage 2023, p. 19).*

*During the 1990s, three music students began to make a name and reputation for themselves at the school. Daniel Johns, Ben Gillies and Chris Joannou joined in 1992 to form a three-piece band somewhat styles after Nirvana and Pearl Jam who enjoyed global popularity at the time.....Their band, called Innocent Criminals won a national demo competition organised by the SBS TV show Nomad and the ABC Radio Station Triple J in 1994.....Triple J recorded the band's demo original song Tomorrow and filmed a video clip which aired on the ABC's Rage program on the 16th of June 1994. By the time the video was released, the band had changed its name to Silverchair. In September of 1994 the recording of Tomorrow was released as a four-track extended play (EP) which rose to spend six weeks at number-one on the ARIA singles chart.....The three band members were all around fifteen years of age still attending Newcastle High School. Silverchair have been the recipients of more ARIA awards than any other artist in history, earning 21 wins from 49 nominations. All five of their studio albums reached the number-one position in the ARIA album charts. They have sold over 10 million albums worldwide (EJE Heritage 2023).*

It should be noted that of the buildings set for demolition, blocks B, I and P were the classrooms and spaces that these and scores more students were taught and had their talents nurtured to become significant members of Australia's musical, sporting and acting culture.



**Figure 2.2** The Innocent Criminals, later known as Silverchair (Source: <https://4therecordcom.home.blog/2020/07/27/silverchair-daniel-johns-1994-2018>)

## 2.3 SITE DESCRIPTION

The site is an item of local environmental heritage and listed under Schedule 5 of the *Newcastle Local Environmental Plan 2012* (Newcastle LEP) as “Newcastle High School” (Item I174) and the southern portion of the site is also located within the “Hamilton South Garden Suburb” HCA (Item C3).

The site curtilage (SHI #5065645) and various buildings (SHI #5065628) are also listed on the register of heritage items maintained by the Department of Education in accordance with Section 170 (DoE S170 Register) of the Heritage Act.

The topography of the site is generally level, having been modified from its original swampy state. The land subtly inclines towards the drainage channel adjacent to the northerly perimeter of the site. The site comprises expanses of grass-adorned playing fields, paved courtyards, playing courts, buildings, and landscaped areas featuring flora ranging from shrubbery to substantial mature trees.

The site is encircled on three sides by thoroughfares - Parkway Avenue to the south, National Park Street to the west, and Smith Street to the east. The northerly boundary is demarcated by a footpath and a drainage channel, which diverts rainwater into the Cottage Creek drainage channel.

The site is typical of a modern high school, with buildings of various uses and ages as the school developed and grew in size, triggering the current redevelopment requirements.



### 3 COMPLIANCE WITH GUIDELINES

This section outlines how this ARR complies with Heritage NSW guidelines.

#### 3.1 DIGITAL AND PRINT MINIMUM REQUIREMENTS

The guidelines include minimum requirements for digital recording and reporting. Austral's compliance with these guidelines are outlined in Table 3.1 and Table 3.2.

**Table 3.1 Minimum requirements for digital photographic report**

Requirements	Where addressed
A very brief report or introduction which explains the purposes of the report and gives a brief description of the subject, as well as details of the sequence in which images were taken. The report may also address the limitations of the photographic record and may make recommendations for future work.	Addressed in Section 2 of this report.
The report should include all technical details including camera and lenses, image file size and format, technical metadata associated with the images, and colour information.	Addressed in Section 3.2 of this report.
The report should also contain the catalogue sheets, photographic plan, and supplementary maps or plans.	Addressed in Section 3.2 of this report.

**Table 3.2 Minimum requirements for printing of digital materials**

Requirements	Where addressed
Three hard (paper) copies of the photographic report including catalogue sheets, photographic plan and supplementary maps.	The printing and dissemination of the report will follow these guidelines once acceptance of the final version of the report has been received by the Proponent, and if it is deemed necessary by City of Newcastle, given the advancements in digital technology since the guidelines were introduced. Heritage NSW state that the requirement for hard copies is up to the responsible authority.
Three sets of thumbnail image sheets (e.g. A4 photographic paper with six images by six images) showing images and file numbers. Thumbnail image sheets should be processed with archival stable inks using approved archival photographic papers and cross referenced to catalogue sheets.	The printing and dissemination of the report will follow these guidelines once acceptance of the final version of the report has been received by the Proponent, and if it is deemed necessary by City of Newcastle, given the advancements in digital technology since the guidelines were introduced. Heritage NSW state that the requirement for hard copies is up to the responsible authority.

Requirements	Where addressed
Three copies of archival quality CD-R discs containing electronic images files and associated metadata, cross-referenced to catalogue sheets. If there are a large number of images, then DVD media can be used.	The printing and dissemination of the report will follow these guidelines once acceptance of the final version of the report has been received by the Proponent, and if it is deemed necessary by City of Newcastle, given the advancements in digital technology since the guidelines were introduced. Heritage NSW state that the requirement for hard copies is up to the responsible authority.
One set of 10.5 x 14.8cm (A6), prints using archival quality paper and archival stable inks. If the study is very large and includes a considerable number of digital images, key or representative images may be selected for reproduction at 10.5 x 14.8cm.	The printing and dissemination of the report will follow these guidelines once acceptance of the final version of the report has been received by the Proponent, and if it is deemed necessary by City of Newcastle, given the advancements in digital technology since the guidelines were introduced. Heritage NSW state that the requirement for hard copies is up to the responsible authority.

### 3.2 CHECKLIST OF ARCHIVAL RECORDINGS

The following section seeks to document the known development history of the site. The Heritage Office guideline (2006) includes a checklist for the completion of archival recordings. This is outlined in Table 3.3. As per the author's discussion with Heritage NSW, the responsible authority should determine which of these elements are appropriate for the current format for archiving historical information and that a hardcopy may not be required. The below is based on the assumption that a hard copy will be required.

**Table 3.3 Checklist for archival recording**

Requirement	Yes	No
Is there a hardcopy report?	✓	
Does the hardcopy report contain:		
a) thumbnail proof sheet processed in an archival acceptable method?	✓	
b) proof sheet properly sleeved in archival protective pages?	✓	
c) appropriate electronic storage media with report and images?	✓	
d) cameras, lenses, and accessories details?	✓	
e) map showing image location and details?	✓	
f) list of all images, correctly numbered and described?	✓	
Is there an electronic report?	✓	
How is the information stored?		
a) CD Rom – what type		
b) DVD – what type		
c) Other	✓	
Can the storage media be opened?	✓	
Is the information the same as that contained in the hardcopy report?	✓	
Are the images saved as TIFF files, contain metadata and follow guidelines?	✓	
If not, what is the file format and where have they diverted from guidelines?	✓	
Is the storage media filed in an acceptable container?		
Is there a back-up copy stored with the hardcopy report?	✓	
Is there a full set of 10.5 x 14.8 (A6) images processed with archival stable inks and paper?		✓ If required, can be completed.

## 4 PHOTOGRAPHIC ARCHIVAL RECORDING

The following section outlines the photographic archival recording of the study area.

### 4.1 PHOTOGRAPHIC EQUIPMENT

Details of the equipment used to complete the archival recording are detailed in Table 4.1.

**Table 4.1** Details of photographic equipment and operator

Operator	Nicci Foster	Brody Saccoccia
Date	11 March, 2024	10 April, 2024
Camera	Sony RX100 m2	iPhone 14 Pro
Sensor size	20 megapixels	48 megapixels
Proof #	1	1
Lenses	f1. 8 – 4.9 aperture with 3.6x optical zoom lens	f/1.78 aperture
35 mm Lens Equivalent	28-100mm	24mm

### 4.2 PHOTOGRAPHIC INDEX

An index of photographs taken during the archival recording is outlined in Table 4.2, Table 4.3 and Table 4.4. Contact sheets can be found in APPENDIX A – CONTACT SHEETS.

**Table 4.2** Photographic index of photos taken during archival recording of Block B

Image no.	Direction	Description
1	W	Storeroom door
2	NW	Storeroom
3	W	Storeroom
4	W	Storeroom
5	E	Storeroom
6	S	Storeroom
7	S	Storeroom
8	N	VET room
9	NE	VET room
10	NW	VET room
11	SW	VET room
12	SE	VET room
13	E	Hallway ground floor
14	S	Room 11 front door
15	N	Food Technology 1



Image no.	Direction	Description
16	SW	Food Technology 1
17		Food Technology 1
18	N	Kitchen
19	NW	Kitchen
20	NE	Kitchen
21	SE	Kitchen
22	SW	Kitchen
23	E	Kitchen
24	N	Utility room
25	NE	Utility room
26	NW	Utility room
27	SE	Utility room
28	SW	Utility room
29	N	Food Technology 2
30	N	Food Technology 2
31	NE	Food Technology 2
32	SE	Food Technology 2
33	SW	Food Technology 2
34	NW	Food Technology 2
35	E	Hallway ground floor
36	N	Seminar room
37	NW	Seminar room
38	NE	Seminar room
39	SE	Seminar room
40	SW	Seminar room
41	S	Bunting Seminar room
42	S	Bunting Seminar room
43	W	Hallway ground floor
44	N	Classroom 14
45	NE	Classroom 14
46	SE	Classroom 14
47	SW	Classroom 14
48	NE	Classroom 14
49	NE	Foyer

Image no.	Direction	Description
50	NW	Foyer
51	SW	Foyer
52	SW	Foyer
53	S	Classroom 15
54	SW	Classroom 15
55	NE	Classroom 15
56	NW	Classroom 15
57	SE	Classroom 15
62	S	Entrance stairs
63	S	Entrance stairs
64	S	Classroom 16
65	SW	Classroom 16
66	SE	Classroom 16
67	NE	Classroom 16
68	NW	Classroom 16
69	S	FFATS staff room
70	SE	FFATS staff room
71	SW	FFATS staff room
72	NW	FFATS staff room
73	NE	FFATS staff room
74	E	FFATS staff room
75	E	Room connected to FFATS
76	SW	Room connected to FFATS
77	SE	Room connected to FFATS
78	NW	Room connected to FFATS
79	NE	Room connected to FFATS
80	W	Storeroom
81	NW	Storeroom
82	SW	Storeroom
83	NE	Storeroom
84	SE	Storeroom
85	E	Storeroom 2
86	NE	Storeroom 2
87	SE	Storeroom 2

Image no.	Direction	Description
88	SW	Storeroom 2
89	NW	Storeroom 2
90	S	Storeroom 3
91	SE	Storeroom 3
92	SW	Storeroom 3
93	NW	Storeroom 3
94	NE	Storeroom 3
95	S	Storeroom 3
96	S	TTI
97	SE	TTI
98	NE	TTI
99	NW	TTI
100	SW	TTI
101	S	Resource and Textile Lab
102	SW	Resource and Textile Lab
103	NW	Resource and Textile Lab
104	NE	Resource and Textile Lab
105	SE	Resource and Textile Lab
106	E	Textile store
107	SE	Textile store
108	SW	Textile store
109	NW	Textile store
110	NE	Textile store
111	S	Textile 2
112	SE	Textile 2
113	NE	Textile 2
114	NW	Textile 2
115	SW	Textile 2
116	S	Switch board
126	N	Foyer
127	W	Foyer
128	SE	Glass foyer
129	W	Hallway
130	W	Hallway



Image no.	Direction	Description
131	N	Classroom 17
132	NE	Classroom 17
133	SE	Classroom 17
134	SW	Classroom 17
135	NW	Classroom 17
136	W	Classroom 17
137	S	Classroom 17 store
138	N	Classroom 17 store
140	N	Classroom 18
141	NW	Classroom 18
142	NE	Classroom 18
143	SE	Classroom 18
147	E	Classroom 18 store
148	N	Classroom 18 store
149	S	Classroom 18 store
153	N	Supply staffroom
154	NW	Supply staffroom
155	SW	Supply staffroom
156	SE	Supply staffroom
157	NE	Supply staffroom
158	W	Supply staffroom store
159	E	Supply staffroom store
160	N	Cleaner's room
161	N	Cleaner's room
162	S	Cleaner's room
163	NW	Sink detail in cleaner's room
164	N	Music room
165	NW	Music room
166	NE	Music room
167	SE	Music room
168	SW	Music room
173	N	Classroom 19 - music
174	SW	Classroom 19 - music
175	SE	Classroom 19 - music

Image no.	Direction	Description
176	NE	Classroom 19 - music
177	N	Hallway
178	S	Stairway
179	N	Music room 1
180	NW	Music room 1
181	SW	Music room 1
182	SE	Music room 1
183	NE	Music room 1
184	W	Music room 1 ceiling detail
185	W	Preparation room
186	W	Preparation room
187	E	Preparation room
188	S	Preparation room
189	N	Preparation room
190	W	Music store
191	W	Music store
192	E	Music store
193	S	Music store
194	N	Music store
195	SW	Music room 2
196	SW	Music room 2
197	SE	Music room 2
198	NE	Music room 2
199	NW	Music room 2
200	W	Music room 2 ceiling detail
201	NE	Stairwell
202	S	Toilet off stairwell
203	NE	Toilet off stairwell
204	NE	Toilet off stairwell
205	SW	Toilet off stairwell
206	SE	Toilet off stairwell
207	NE	Toilet off stairwell
208	S	Classroom 20
209	SE	Classroom 20

Image no.	Direction	Description
210	NE	Classroom 20
211	NW	Classroom 20
212	SW	Classroom 20
213	S	Former toilet
214	SE	Former toilet
215	E	Former toilet
216	SW	Former toilet
217	SE	Former toilet
218	SE	Former toilet
219	SW	Former toilet
220	N	Former toilet
221	NE	Former toilet
222	S	Former toilet - curved wall detail
223	S	Hallway
224	S	Staff bathroom
225	SE	Staff bathroom
226	SW	Staff bathroom
227	W	Staff bathroom
228	SE	Staff bathroom
229	NE	Staff bathroom
230	E	CAPA Staff room
231	SE	CAPA Staff room
232	SW	CAPA Staff room
233	NW	CAPA Staff room
234	NE	CAPA Staff room
235	E	CAPA Staff room - ceiling detail
236	S	Book storeroom
237	S	Book storeroom
238	N	Book storeroom
239	E	Hallway
240	S	Classroom 21
241	SE	Classroom 21
242	NE	Classroom 21
243	NW	Classroom 21



Image no.	Direction	Description
244	SW	Classroom 21
246	W	Classroom 21 Storeroom
247	N	Classroom 21 Storeroom
248	S	Classroom 21 Storeroom
249	S	Storeroom next to Classroom 21
250	SE	Storeroom next to Classroom 21
251	SE	Storeroom next to Classroom 21
252	E	Storeroom next to Classroom 21
253	S	Classroom 22
254	SE	Classroom 22
255	NE	Classroom 22
256	SW	Classroom 22
257	SE	Classroom 22 wall detail
258	S	Classroom 22 sink detail
259	W	Classroom 22 storeroom 1
260	N	Classroom 22 storeroom 1
261	S	Classroom 22 storeroom 1
262	W	Classroom 22 storeroom 2
263	SW	Classroom 22 storeroom 2
264	W	Classroom 22 storeroom 2
265	S	Façade
266	SE	Façade
267	SE	Façade
268	SE	Façade
269	SE	Façade
270	E	Façade
271	E	Façade
272	N	Window detail on façade
273	N	Window detail on façade
274	N	Brass detail on façade
275	NE	Façade
276	N	Window and brass detail on façade
277	N	Front entrance
278	NE	Façade

Image no.	Direction	Description
279	N	Façade
280	N	Façade
281	NE	Façade
282	NW	Façade
283	N	Façade
284	NW	Façade
285	N	Façade
286	S	Rear entrance
287	SW	Intersection with Block A
288	S	Covered walkway connecting to Block B/A intersection
289	SW	Façade
290	SW	Façade

**Table 4.3 Photographic index of photos taken during archival recording of Block I**

Image no.	Direction	Description
1-I	W	Toilets – east façade
2-I	E	Toilets – entrance way
3-I	S	Toilets – entrance way
4-I	SE	Toilets – entrance way
5-I	NE	Toilets – entrance way
6-I	E	Boys' toilets
7-I	W	Boys' toilets
8-I	S	Boys' toilets
9-I	N	Boys' toilets
10-I	E	Girls' toilets
11-I	SE	Girls' toilets
12-I	NE	Girls' toilets
13-I	SE	Girls' toilets
14-I	E	Girls' toilets
15-I	S	Girls' toilets
16-I	S	Girls' toilets
17-I	NE	Girls' toilets
18-I	SE	Beam detail
19-I	SE	Façade
20-I	S	Façade

Image no.	Direction	Description
21-I	E	Beam detail
22-I	E	Beam detail
23-I	E	Beam detail
24-I	S	Middle section between toilets and canteen
25-I	NW	Middle section between toilets and canteen
26-I	W	Middle section between toilets and canteen
27-I	NE	Middle section between toilets and canteen
28-I	N	South façade
29-I	N	South façade
30-I	N	South façade
31-I	N	Beam detail
32-I	E	West façade
33-I	E	West façade
34-I	E	West façade
35-I	E	West façade detail
36-I	E	West façade
37-I	NE	Office
38-I	NW	Office
39-I	SE	Office
40-I	SW	Office
41-I	W	Office storeroom
42-I	N	Office storeroom
43-I	S	Office storeroom
44-I	E	Office storeroom
45-I	NW	Office storeroom
46-I	S	Office storeroom
47-I	E	Canteen storeroom
48-I	W	Canteen storeroom
49-I	SW	Canteen storeroom
50-I	S	Canteen storeroom
51-I	S	Canteen fridge
52-I	NW	Canteen fridge
53-I	SE	Canteen toilet
54-I	NW	Canteen toilet



Image no.	Direction	Description
55-I	SE	Canteen toilet
56-I	NW	Canteen toilet
57-I	W	Canteen main cooking area
58-I	N	Canteen main cooking area
59-I	E	Canteen main cooking area
60-I	S	Canteen main cooking area
61-I	NW	Façade

**Table 4.4 Photographic index of photos taken during archival recording of Block P**

Image no.	Direction	Description
1-P	W	Front room
2-P	NW	Front room
3-P	NE	Front room
4-P	S	Front room
5-P	E	Kitchen
6-P	N	Kitchen
7-P	W	Kitchen
8-P	S	Kitchen
9-P	E	Laundry
10-P	W	Laundry
11-P	NW	Sunroom
12-P	E	Sunroom
13-P	SW	Toilet
14-P	NE	Toilet
15-P	N	Belinda Wright - Office Space
16-P	W	Belinda Wright - Office Space
17-P	S	Belinda Wright - Office Space
18-P	E	Belinda Wright - Office Space
19-P	NE	Aboriginal Artwork
20-P	NW	Bathroom
21-P	W	Bathroom
22-P	NE	Bathroom
23-P	SW	Bathroom
24-P	NW	Bathroom
25-P	N	Bathroom

Image no.	Direction	Description
26-P	E	West façade
27-P	NW	Didgeridoo art
28-P	SW	Northeast façade
29-P	NW	Southeast façade
30-P	NE	Southwest façade

## 5 REFERENCES

---

EJE Heritage. 2023. 'Statement of Heritage Impact; Newcastle Education Campus; Newcastle High School'.

<https://majorprojects.planningportal.nsw.gov.au/prweb/PRRestService/mp/01/getContent?AttachRef=SSD-41814831%2120230626T075518.924%20GMT>.

Gyde. 2023. 'Environmental Impact Statement; Newcastle Education Campus; 25A National Park Street, Newcastle West'. Report to Department of Planning and Environment.

<https://majorprojects.planningportal.nsw.gov.au/prweb/PRRestService/mp/01/getContent?AttachRef=SSD-41814831%2120230626T064546.347%20GMT>.

NSW Heritage Office. 2006. 'Photographic Recording Of Heritage Items Using Film or Digital Capture'.

## APPENDIX A – CONTACT SHEETS

---





✔ 1



✔ 2



✔ 3



✔ 4



✔ 5



✔ 6



✔ 7



✔ 8



✔ 9



✔ 10



✔ 11



✔ 12



✔ 13



✔ 14



✔ 15



✔ 16



✔ 17



✔ 18



✔ 19



✔ 20



21



22



23



24



25



26



27



28



29



30



31



32



33



34



35



36



37



38



39



42



✔ 43



✔ 44



✔ 45



✔ 46



✔ 47



✔ 48



✔ 49



✔ 50



✔ 51



✔ 52



✔ 53



✔ 54



✔ 55



✔ 56



✔ 70



✔ 71



72



73



74



75



76



77



78



79



80



81



82



83



84



85



86



87



88



89



90



91



92



93



94



95





✔ 96



✔ 97



✔ 98



✔ 99



✔ 100



✔ 101



✔ 102



✔ 103



✔ 104



✔ 105



✔ 106



✔ 107



✔ 108



✔ 109



✔ 110



✔ 111



112



113



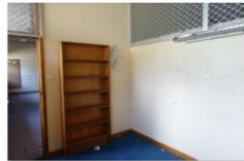
114



115



116



117



118



119



120



121



122



123



124



133



134



135



136



137



138



139



✔ 140



✔ 141



✔ 142



✔ 143



✔ 144



✔ 145



✔ 146



✔ 147



✔ 148



✔ 149



✔ 150



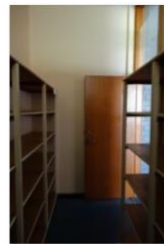
✔ 153



✔ 154



✔ 155



✔ 156



✔ 160



✔ 161



✔ 162



✔ 163



✔ 164



✔ 165



✔ 166



✔ 167



✔ 168





169



170



171



172



173



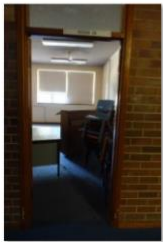
174



175



176



181



182



183



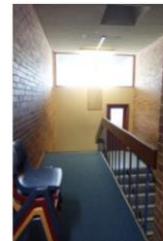
184



185



186



187



188



189



190



191



192



193



194



195



196





✔ 197



✔ 198



✔ 199



✔ 200



✔ 201



✔ 202



✔ 203



✔ 204



✔ 205



✔ 206



✔ 207



✔ 208



✔ 209



✔ 210



✔ 211



✔ 212



✔ 213



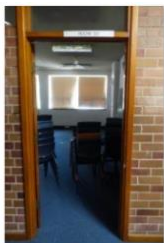
✔ 214



✔ 215



✔ 216



✔ 217



✔ 218



✔ 219



✔ 220



✔ 221



✔ 222



✔ 223



✔ 224



✔ 225



✔ 226



✔ 227



✔ 228



✔ 229



✔ 230



✔ 231



✔ 232



✔ 233



✔ 234



✔ 235



✔ 236



237



238



239



240



241



242



243



244



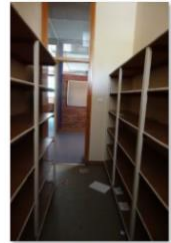
245



246



247



248



249



250



251



252



253



254



255



256



257



258



259



260



✔ 261



✔ 262



✔ 264



✔ 265



✔ 266



✔ 267



✔ 268



✔ 269



✔ 270



✔ 271



✔ 272



✔ 273



✔ 274



✔ 275



✔ 276



✔ 277



✔ 278



✔ 279



✔ 280



✔ 281





📍 282



📍 283



📍 284



📍 285



📍 286



📍 287



📍 288



📍 289



📍 290



1-I



2-I



3-I



4-I



5-I



6-I



7-I



8-I



9-I



10-I



11-I



12-I



13-I



14-I



15-I



16-I



17-I



18-I



19-I



20-I



21-I



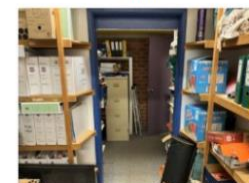
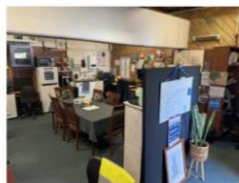
22-I



23-I



24-I







49-I



50-I



51-I



52-I



53-I



54-I



55-I



56-I



58-I



59-I



60-I



61-I



62-I



63-I



64-I



1-P



2-P



3-P



4-P



5-P



6-P



7-P



8-P



9-P



10-P



11-P



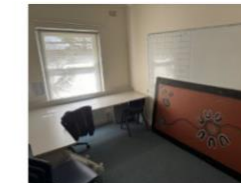
12-P



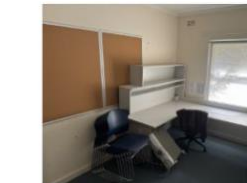
13-P



14-P



15-P



16-P



17-P



18-P



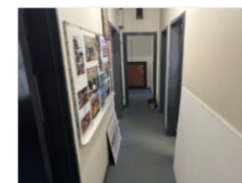
19-P



20-P



21-P



22-P



23-P



24-P





25-P



26-P



27-P



28-P



29-P



30-P



31-P



32-P



33-P



34-P



35-P



36-P



37-P



38-P



39-P



40-P



41-P



42-P



43-P



44-P



45-P



46-P



47-P



48-P



49--P



50-P



51-P



52-P



53-P



54-P



55-P



56-P



57-P



58-P



59-P



60-P



61-P