



Newcastle Education Campus

Project update | September 2023

Project overview

Located on the main Newcastle High School site, the Newcastle Education Campus will upgrade facilities to meet predicted demand in the region to 2036 by delivering:

- a new 3 storey learning hub which includes a new library, canteen and covered outdoor learning area (COLA), support learning unit, general classrooms, hospitality classrooms and science labs
- a new multi-purpose facility with gymnasium, stage, fitness lab, flexible classrooms, outdoor courts and end of trip facilities
- a new student hub within existing Building A and student entry from Parkway Avenue
- retention of key heritage buildings on site.

Separate to this project, in line with the NSW Government's election commitment work is progressing to deliver an enrolment audit that will inform future planning for growth across NSW.

Progress summary

The State Significant Development (SSD) application was recently exhibited by the NSW Department of Planning and Environment (DPE). Members of the public were invited to make a submission about the project during the exhibition period to Wednesday 2 August 2023.

DPE has reviewed all submissions received during the 28-day public exhibition period and requested School Infrastructure NSW provide a formal response. We have been working through the submissions in a process called Request for Information (RFI).

We expect to submit the RFI by late September 2023.

Determination of the SSD application can take up to 9 months, after which construction work will begin. We will keep the community informed about the status of the project's statutory planning approvals and notify you before construction starts.

Project stages

Following early works, the project will be delivered in five main stages.

Early works

Starting November 2023, early works are expected to take around 2 to 4 months. Temporary demountable buildings will be installed during this time to provide alternative locations for student learning while we construct in other areas of the school. These will be located within the school boundaries.

Stage 1

Stage 1 is expected to take around 4 to 6 months and will start early-2024 pending approval of the SSD application. Works in this stage include clearing parts of the site, external works, and installation of site sheds, temporary toilets, shade cloth and safety fencing. This stage will mainly occur in the south-western part of the school site and involve demolition of Building B and the existing sports courts, removal of trees and other planting, and upgrades to the service infrastructure. Additionally, Building H will be moved to its new location during this stage.

School activities usually conducted in Building B will take place in the temporary demountable buildings. Construction vehicles will enter the site from National Park Street, except during the relocation of Building H, when they will enter from Smith Street.

Stage 2

Stage 2 is expected to take around 12 to 18 months. These works will take place in the south-western part of the school site opposite National Park Street and include construction of the new learning hub, a new walkway, the new support drop-off zone on National Park Street near Building C, and landscaping. Construction vehicles will continue to enter the site from National Park Street.

Stage 3

Stage 3 is expected to take around 12 to 18 months and will overlap with Stage 2 works. Taking place in the far north-eastern corner of the school site, works during this stage include construction, landscaping and external works for the new multi-purpose facility, and demolition of Building P. Construction vehicles will enter the site from Smith Street.

Stage 4

Stage 4 is expected to take around 4 to 6 months in the central part of the site. Works during this stage include refurbishment of Buildings A and K, demolition of Building D, E, I, J and the walkway to Building K, and associated landscaping works.

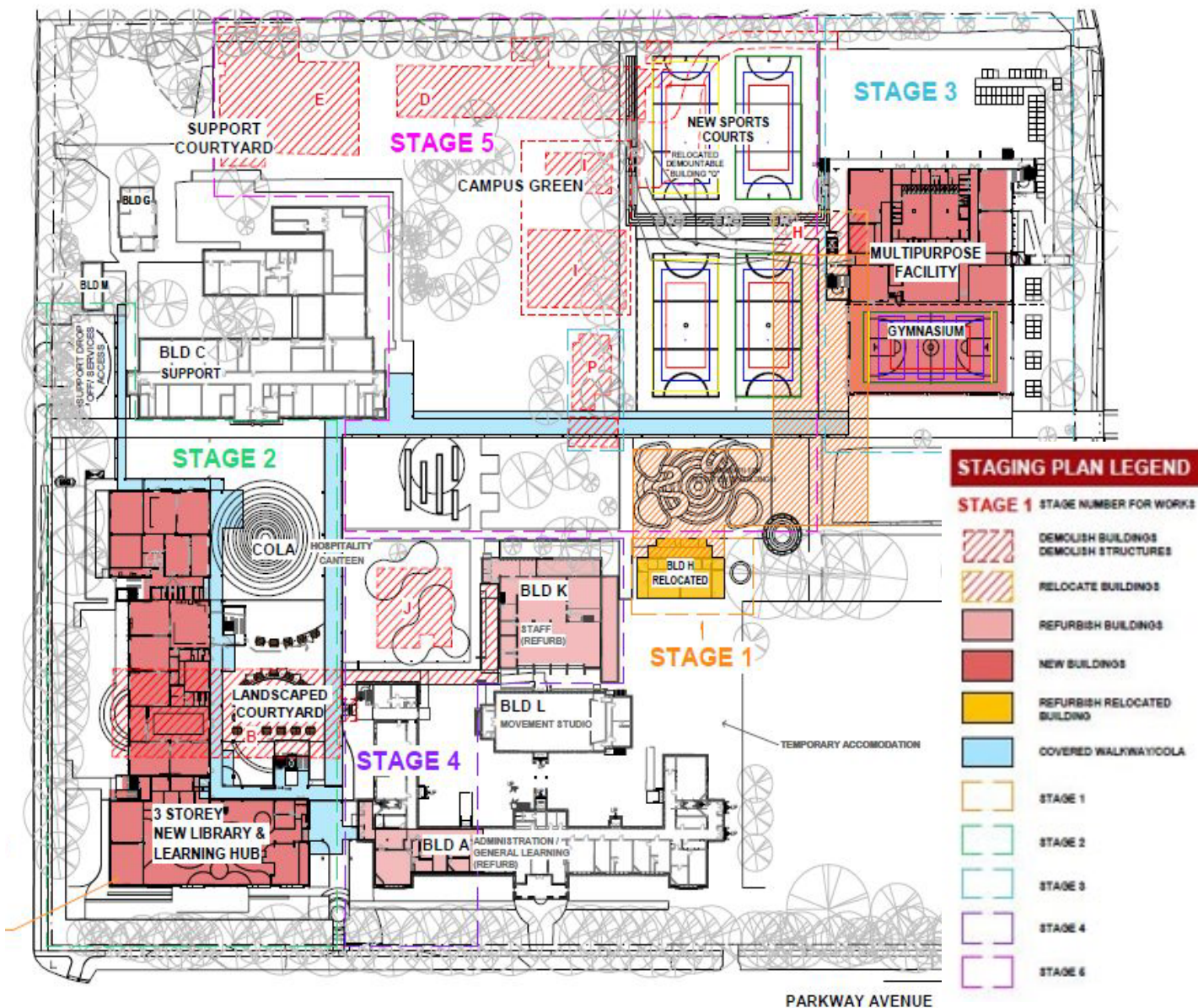
School activities usually conducted in Buildings D, E, I, J and K will be transferred to other existing and new school buildings during this stage. Construction vehicles will continue to enter the site from Smith Street.

Stage 5

Stage 5 is expected to take around 4 to 6 months and will overlap with Stage 4 works. Taking place in the northern end of the site, works include construction of the new sports courts, the new campus green and associated landscaping and walkways. Construction vehicles will enter the site from Smith Street and National Park Street.



Indicative staging site plan



Traffic and pedestrian access changes

Traffic and pedestrian access changes during the construction phases will include:

- Primary pedestrian access to the school will be through Building A on Parkway Avenue, with secondary access from Smith Street and National Park Street as the stages progress.
- The kiss and drop zones on National Park Street and Parkway Avenue, and the bus zone on National Park Street will continue to operate.
- The on-site car park will continue to be available for school staff.
- The south-east school oval, middle courtyard and internal courtyards will be available for student use.
- Vehicle access points will be monitored at all times during construction to maintain safety. Pedestrians and passing traffic will be given priority.

Management of construction impacts

During construction, classes at Newcastle High School will continue as usual. Potential impacts of construction on student learning is an issue we treat with the highest priority. We will work closely with school leadership to ensure impacts are minimised throughout the project. This includes temporarily relocating class activities, and programming noisy works appropriately with consideration given to sensitive periods for the school, such as exams.

Traffic, noise, vibration and dust impacts will be managed carefully during construction in order to minimise any potential disruption to the school and local community. Works will be done progressively in planned stages and will be conducted in accordance with the project’s environmental management plan.

For more information about how we manage impacts from construction in the community and our schools, visit our fact sheet: www.schoolinfrastructure.nsw.gov.au/construction-impacts.html

Have your say about the Newcastle Education Campus

We are committed to delivering school infrastructure that enriches student learning while being an asset the community can be proud of.

We have engaged Gyde to prepare a Social Impact Assessment (SIA). The SIA is an independent objective study that identifies and analyses potential social impacts and benefits associated with this project. The SIA is being extended in accordance with the NSW Department of Planning and Environment’s (DPE) Social Impact Assessment Guidelines (2023) and will be reviewed by DPE.

Gyde is engaging with the community to better understand the local area and obtain feedback for the extended SIA. We invite you to complete a short survey Gyde has developed. The survey is anonymous, takes about 5 minutes to complete, and will help us ensure any potential impacts of this project are managed appropriately.

The survey will be open until 24 September 2023. You can access the survey by visiting <https://www.surveymonkey.com/r/NewEdCamp> or scanning the below QR code.



Artist impression of the new multi-purpose facility from Smith Street

