

# Project overview

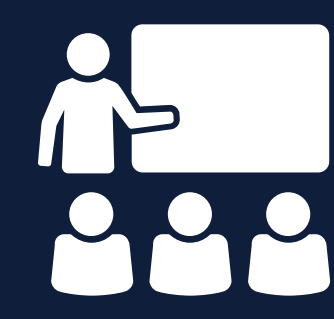
The NSW Government is investing \$8.6 billion in school infrastructure over the next four years, continuing its program to deliver 160 new and upgraded schools to support communities across NSW. This builds on the more than \$9.1 billion invested in projects delivered since 2017, a program of \$17.7 billion in public education infrastructure.

The NSW Department of Education is committed to delivering new and upgraded schools for communities across NSW. The delivery of these important projects is essential to the future learning needs of our students and supports growth in the local economy.

Included in this program is the Newcastle Education Campus (NEC). Located on the main Newcastle High School site, the NEC will cater for the growing population in the region by delivering:



**Modern flexible learning spaces for up to 1,420 students**



**37 new permanent learning spaces and 5 new support learning spaces**



**New library, canteen and science laboratories**



**New multi-purpose sports and performance hall**



Artist impression of Newcastle Education Campus multi-purpose hall

## Newcastle Education Campus

For more information phone: 1300 482 651  
Email: [schoolinfrastructure@det.nsw.edu.au](mailto:schoolinfrastructure@det.nsw.edu.au)

# Project update

The statutory planning process for the Newcastle Education Campus has started. The project is considered a State Significant Development (SSD) and therefore the NSW Department of Planning and Environment (DPE) will assess the development application for the project.

The final business case for this project was approved by NSW Treasury in June 2022. This key milestone means that the project has funding for the construction phase, pending approval of the SSD application.

A request for the Secretary's Environmental Assessment Requirements (SEARs) was submitted to DPE in May 2022. DPE assessed the submission and have issued the SEARs, which sets out the studies that need to be included in the Environmental Impact Statement (EIS). The EIS provides a comprehensive description of the project's environmental, social and economic impacts. It includes detailed information on the project scope and design plans, and is the key document for the SSD application.

We invite community feedback prior to submitting the SSD application.

Masterplanning and the concept designs for the site were completed last year, and the schematic design was completed this year. These are three of four design phases and provide a high level vision for the site. The final designs for the new high school will be determined in the next design phase, detailed design, in consultation with stakeholders.

Student learning will continue at Newcastle High School while the new facilities are being built.

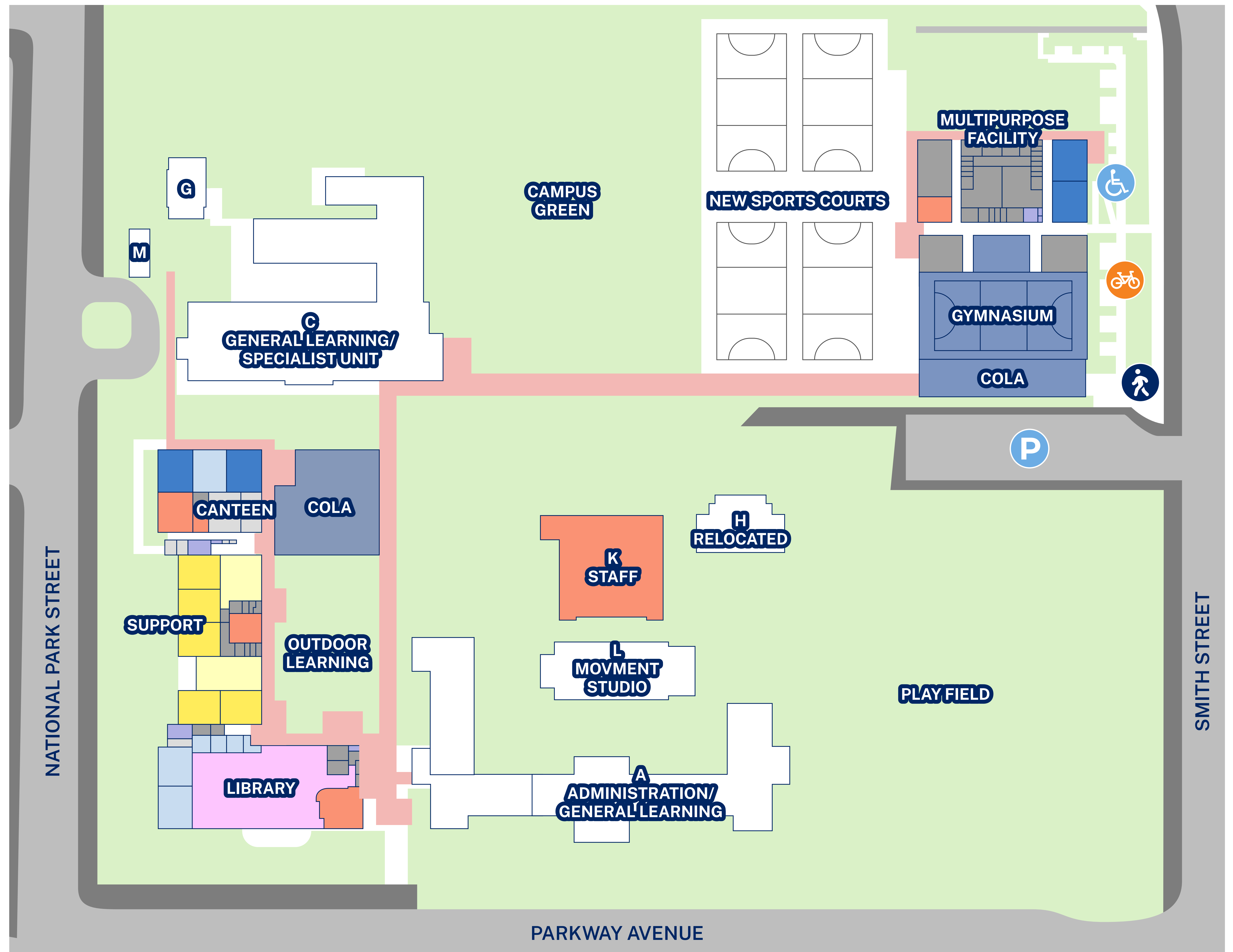


Artist impression of new sports courts with multi-purpose facility in the background

## Newcastle Education Campus

For more information phone: 1300 482 651  
Email: [schoolinfrastructure@det.nsw.edu.au](mailto:schoolinfrastructure@det.nsw.edu.au)

# Site layout



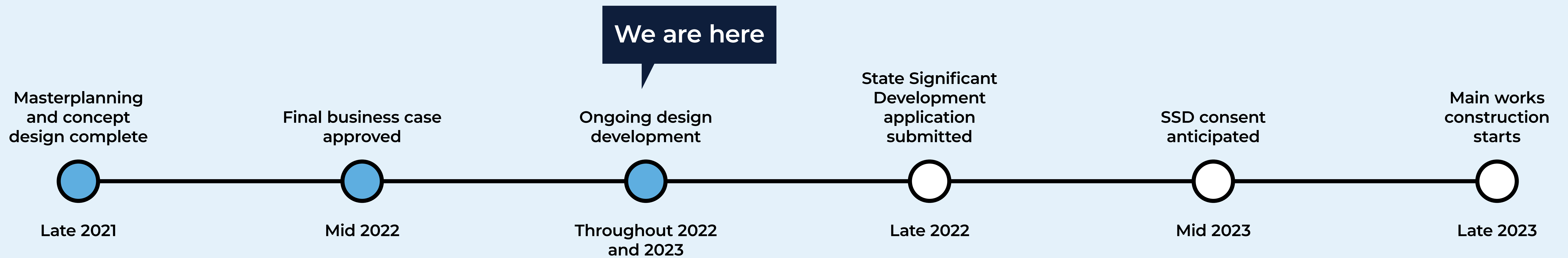
- General learning spaces
- Shared learning space/seminar room/student hub
- Support
- Support withdrawal/practical activities area
- Specialist unit/specific stores & supporting spaces
- Hall and performance spaces
- Library/special programs
- Student amenities/storage unit /comms
- Staff unit/administration
- Services
- ♿ New accessible ramp
- 🚶 New paved walkway
- 🚲 180 bike spaces
- P Carpark

## Newcastle Education Campus

For more information phone: 1300 482 651  
Email: schoolinfrastructure@det.nsw.edu.au

# What's next?

## Project timeline



We continue to work with key stakeholders so that we can deliver high quality education infrastructure for the local community.

We will continue to share information with you as the project progresses. In the meantime you can stay informed by scanning the QR code and visiting the project web page. You can also contact us via email or phone if you have any questions or feedback about the project.



## Newcastle Education Campus

For more information phone: 1300 482 651  
Email: [schoolinfrastructure@det.nsw.edu.au](mailto:schoolinfrastructure@det.nsw.edu.au)

# Heritage considerations

Newcastle, and in particular the grounds of Newcastle High School, has a rich and diverse heritage tradition. We are aware of the significance of the heritage buildings and the conservation areas that surround them, and are committed to respecting the history and maintaining the heritage of the site and surrounds.

Several of the existing buildings at Newcastle High School date back to the 1920s when teaching started on the site. Some other buildings were added in the 1950s as the school moved from providing girls only education to the current co-ed high school.

Some of the heritage buildings being retained as part of this project include Buildings A and L, which were originally part of Newcastle Girls High School (circa 1928/29), and Building C, which was the former Newcastle Central Domestic Science School (circa 1930/31).

## Aboriginal heritage

We acknowledge the traditional custodians of the land, the Awabakal people. Our Connection with Country workshops have identified several ways we can incorporate design elements that celebrates their rich history while supporting Aboriginal students. These include exploring opportunities to apply Indigenous images on new facility walls, incorporating endemic planting, Indigenous foods and medicinal plants, including gathering spaces throughout the campus to provide opportunities for Indigenous learning, and installing a sunshade screen provides a visual interpretation of local Aboriginal stories, particularly of the Saltwater people.



Building A entry



Building A administration



Building C



Building L

## Newcastle Education Campus

For more information phone: 1300 482 651  
Email: [schoolinfrastructure@det.nsw.edu.au](mailto:schoolinfrastructure@det.nsw.edu.au)

# Flexible learning spaces

Contemporary learning and teaching prepares students for a diverse and interconnected world. We are evolving the ways we teach our students new skills valued by a changing workforce, understand different ways students learn and support new ways of interacting with information through technology.

Flexible learning spaces are designed and equipped to support contemporary learning and teaching.

## What makes a flexible learning space?



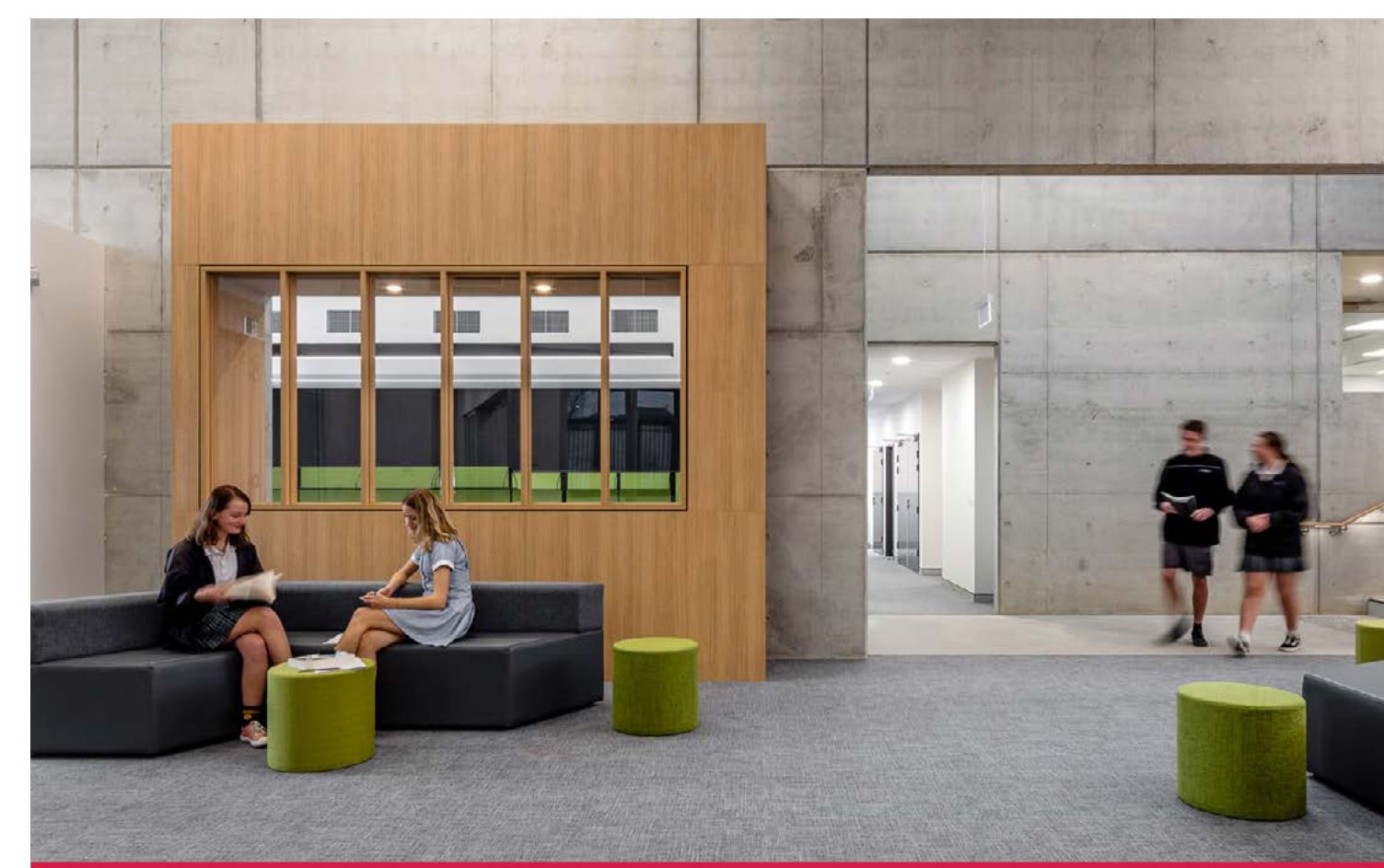
### Learning space

- Different zones (areas of a building or floors) are designed to support a range of activities sometimes grouped by subject area
- Varied furniture allows for student choice, comfort and flexibility
- Spaces are flexibly connected allowing students to work in varied group sizes
- Connection between indoor and outdoor learning spaces



### Organisation

- Movement is encouraged for students and teachers to collaborate and interact
- More than one teacher may be available to students within the learning environment
- Students learn in classes, small groups or individually



### Teaching and learning

- Learning is personalised
- Learning is connected across different subject areas
- There is a focus on creativity and innovation with students prototyping, testing and using technology in creative ways



### Technology

- Technology is integrated into spaces to extend learning opportunities
- WiFi is available everywhere including outdoors
- Specialist equipment is available for students to innovate, communicate and create

## Newcastle Education Campus

For more information phone: 1300 482 651  
Email: [schoolinfrastructure@det.nsw.edu.au](mailto:schoolinfrastructure@det.nsw.edu.au)

# Artist impressions

School design may change as part of ongoing design development.



New learning hub from Parkway Avenue



Internal courtyard of the new learning hub



Artist impression of Newcastle Education Campus multi-purpose hall

## Newcastle Education Campus

For more information phone: 1300 482 651  
Email: [schoolinfrastructure@det.nsw.edu.au](mailto:schoolinfrastructure@det.nsw.edu.au)

# Artist impressions

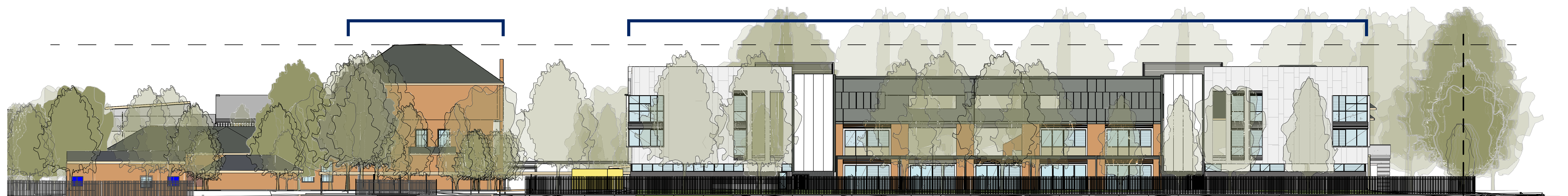
School design may change as part of ongoing design development.



Internal view of new gymnasium

## Building C

## New learning hub



Artist impression of the new learning hub and existing Block C from National Park Street

## Newcastle Education Campus

For more information phone: 1300 482 651  
Email: [schoolinfrastructure@det.nsw.edu.au](mailto:schoolinfrastructure@det.nsw.edu.au)