

A new primary school in Nowra

Planning update

November 2021

Investing in our schools

The NSW Government is investing \$7.9 billion over the next four years, continuing its program to deliver 215 new and upgraded schools to support communities across NSW. This is the largest investment in public education infrastructure in the history of NSW.

The NSW Department of Education is committed to delivering new and upgraded schools for communities across NSW. The delivery of these important projects is essential to the future learning needs of our students and supports growth in the local economy.

Planning for a new primary school in Nowra.

Planning has begun for a new primary school in Nowra. This includes site investigations and needs analysis. The planning phase involves consideration and studies of demographic trends, education requirements, catchment boundaries, heritage requirements, transport links and possible shared area opportunities.

Consultants such as architects and Project Managers are appointed and investigation and review of the site takes place, along with development of the Master Plan options. A Project Reference Group (PRG) has been established for this project and a preferred concept design is identified at this phase. Once a preferred option is identified, approvals are needed in order to progress to delivery of the project.

Master planning considers options for general size, shape and form of the buildings for a specific school site. Doing so means that we consider the needs of the local area now and into the future, and ensure the right school is designed for the community. This is an important step before stakeholder and community engagement starts.

In addition to modern and flexible teaching and learning spaces, a new school may also include a covered outdoor learning area, known as a COLA, a library, hall, and administration facilities, and green and open play space.

Progress summary

A number of locations for the new school were considered based on suitability to support the needs of the project. This included availability of services such as sewerage, electricity, and roads, the accessibility of the site and environmental constraints such as bushfire, ecological impacts, and flooding.

Following the due diligence process and in consultation with key Department of Education representatives, a site on the eastern area of Shoalhaven High School was identified as the most suitable location. This existing school site has adequate land to accommodate a new primary school and is located close to the growing suburbs of South Nowra and Worrigeer.

Work is underway on a business case for the new primary school, and project consultants, including architects, traffic and transport planners have been appointed to continue developing plans for the new school and start consultation with key stakeholders and school leadership in the region.

How can I get involved?

We are committed to working together with our school communities and other stakeholders to deliver the best learning facilities for students. As the project progresses we will share details with the community for feedback.

A dedicated project page has been published on the School Infrastructure NSW website, which will be updated as the project progresses. You can also contact us via our community information line and email on the details below.

For more information contact:

School Infrastructure NSW
Email: schoolinfrastructure@det.nsw.edu.au
Phone: 1300 482 651
www.schoolinfrastructure.nsw.gov.au

A new primary school in Nowra

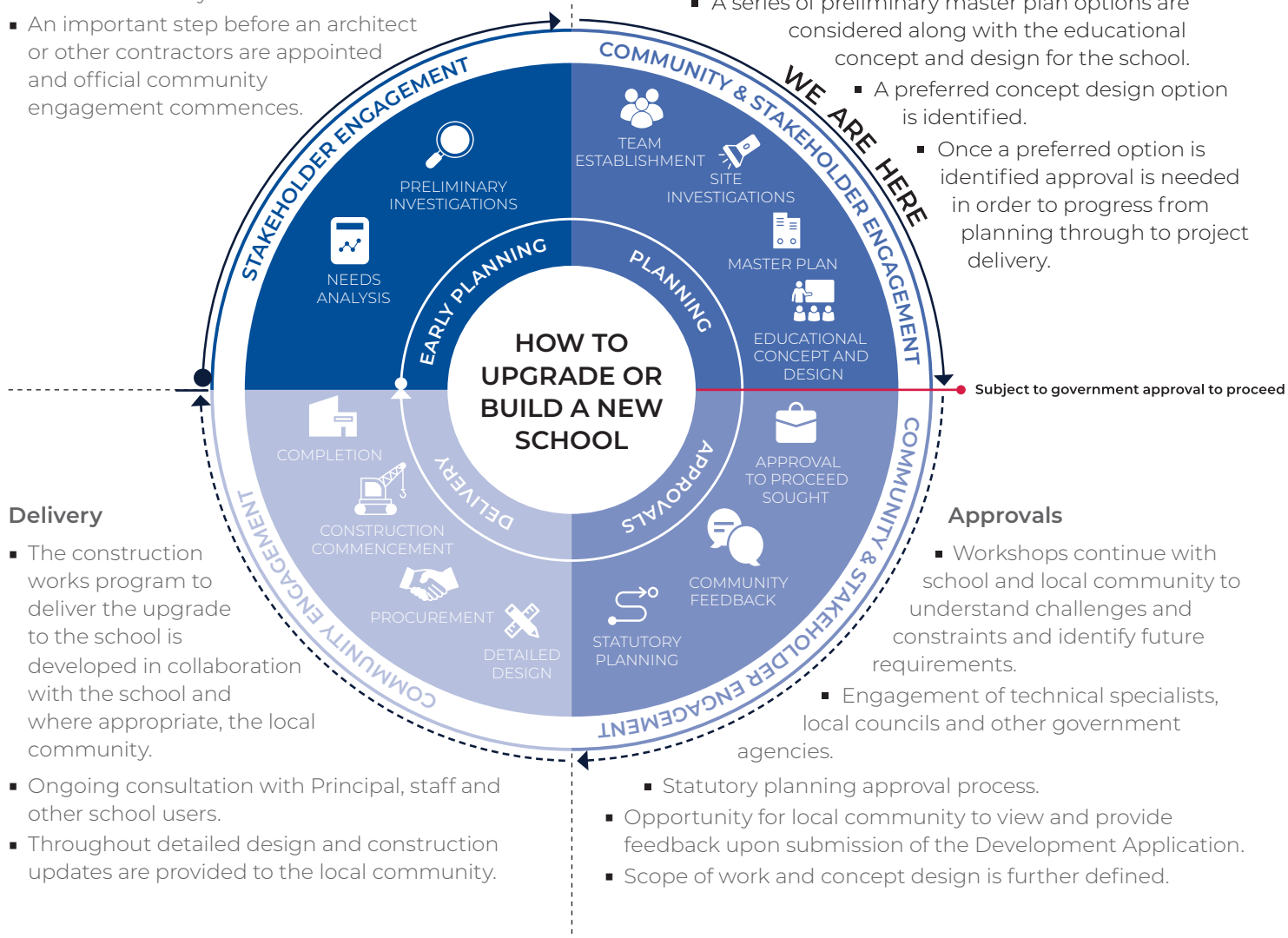
The information below takes you through the journey of upgrading or building a new school.

Early planning

- Consideration and studies of demographic trends, education requirements, the condition of the existing school buildings, catchment boundaries, heritage requirements, transport links and partnership opportunities.
- Doing so means that we:
 - consider the needs of the local area now and into the future.
 - ensure the right school is designed for the community.
- An important step before an architect or other contractors are appointed and official community engagement commences.

Planning

- Consultants such as architects and project managers are appointed.
- Investigation and review of site and development of master plan options.
- Master planning considers options for the general size, shape and form of buildings for a specific school site.
- A Project Reference Group (PRG) is established.
- Operational, educational and service delivery factors are understood and considered by the PRG.
 - A series of preliminary master plan options are considered along with the educational concept and design for the school.
 - A preferred concept design option is identified.



Delivery

- The construction works program to deliver the upgrade to the school is developed in collaboration with the school and where appropriate, the local community.
- Ongoing consultation with Principal, staff and other school users.
- Throughout detailed design and construction updates are provided to the local community.

Approvals

- Workshops continue with school and local community to understand challenges and constraints and identify future requirements.
 - Engagement of technical specialists, local councils and other government agencies.
- Statutory planning approval process.
- Opportunity for local community to view and provide feedback upon submission of the Development Application.
- Scope of work and concept design is further defined.

For more information contact:

School Infrastructure NSW
 Email: schoolinfrastructure@det.nsw.edu.au
 Phone: 1300 482 651
www.schoolinfrastructure.nsw.gov.au

