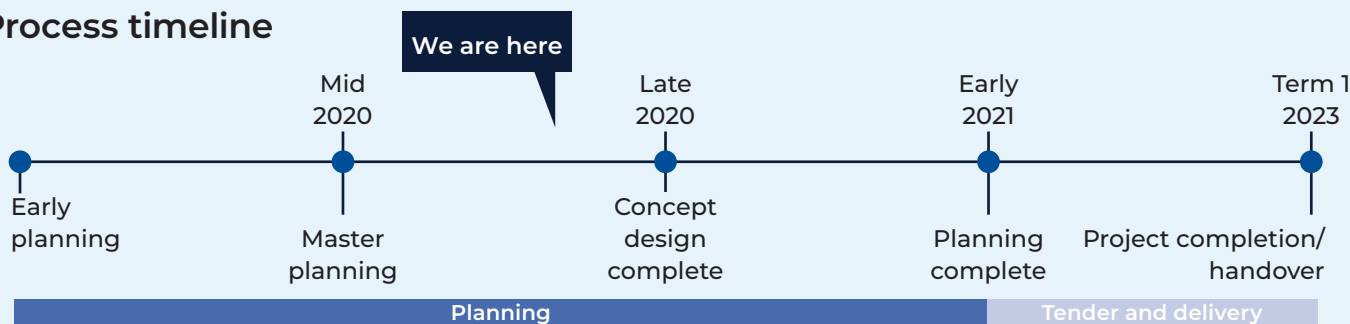


# New primary school at Murrumbateman

Planning update

October 2020

## Process timeline



### Planning for a new primary school at Murrumbateman

We are currently undertaking planning for a primary school at Murrumbateman. This includes development of a master plan and concept design.

To develop a concept design we need to understand the spatial requirements for a school and how it might fit within the Murrumbateman community.

In addition to innovative teaching and learning spaces, the new schools may also include:

- teaching and learning spaces
- covered outdoor learning area
- library
- green space
- administrative facilities.

Once the concept design is developed it will go through an approval process to proceed.

### Progress summary

We are in master planning phase and are currently assessing the spatial and community requirements for the school.

### Visit us at the Community Information Hub and complete our survey

We invite you to register your attendance for a drop-in community information hub session where you can find out more about the school and learn about the building process. Registration is required to ensure current social distancing measures are followed.

Our Community Information Hub will be at 2 Fairley Street, Murrumbateman on the following days and times:

### Wednesday 28 October

8:30am to 11:30am and 1:30pm to 4:30pm

### Wednesday 4 November

9:30am to 12:00pm and 1:30pm to 6:00pm

### Thursday 5 November

8:30am to 11:30am and 1:30pm to 4:00pm



To book in a session please scan the QR code below or go to [www.eventbrite.com/e/community-information-hub-new-primary-school-in-murrumbateman-goulburn-tickets-124510561441](http://www.eventbrite.com/e/community-information-hub-new-primary-school-in-murrumbateman-goulburn-tickets-124510561441)

### How can I get involved?

We are committed to working together with our school communities and other stakeholders to deliver the best possible learning facilities for students.

Share with us what's important to you. At the Community Information Hub you can also complete our online survey. This will be open from 28 October to 25 November.

### Keep in touch

Share with us what's important to you. At the Community Information Hub you can also complete our online survey. You can also visit the project page on the School Infrastructure NSW website at [www.schoolinfrastructure.nsw.gov.au/projects/n/New-primary-school-in-Murrumbateman.html](http://www.schoolinfrastructure.nsw.gov.au/projects/n/New-primary-school-in-Murrumbateman.html).

### For more information contact:

School Infrastructure NSW  
 Email: [schoolinfrastructure@det.nsw.edu.au](mailto:schoolinfrastructure@det.nsw.edu.au)  
 Phone: 1300 482 651  
[www.schoolinfrastructure.nsw.gov.au](http://www.schoolinfrastructure.nsw.gov.au)

## New primary school at Murrumbateman

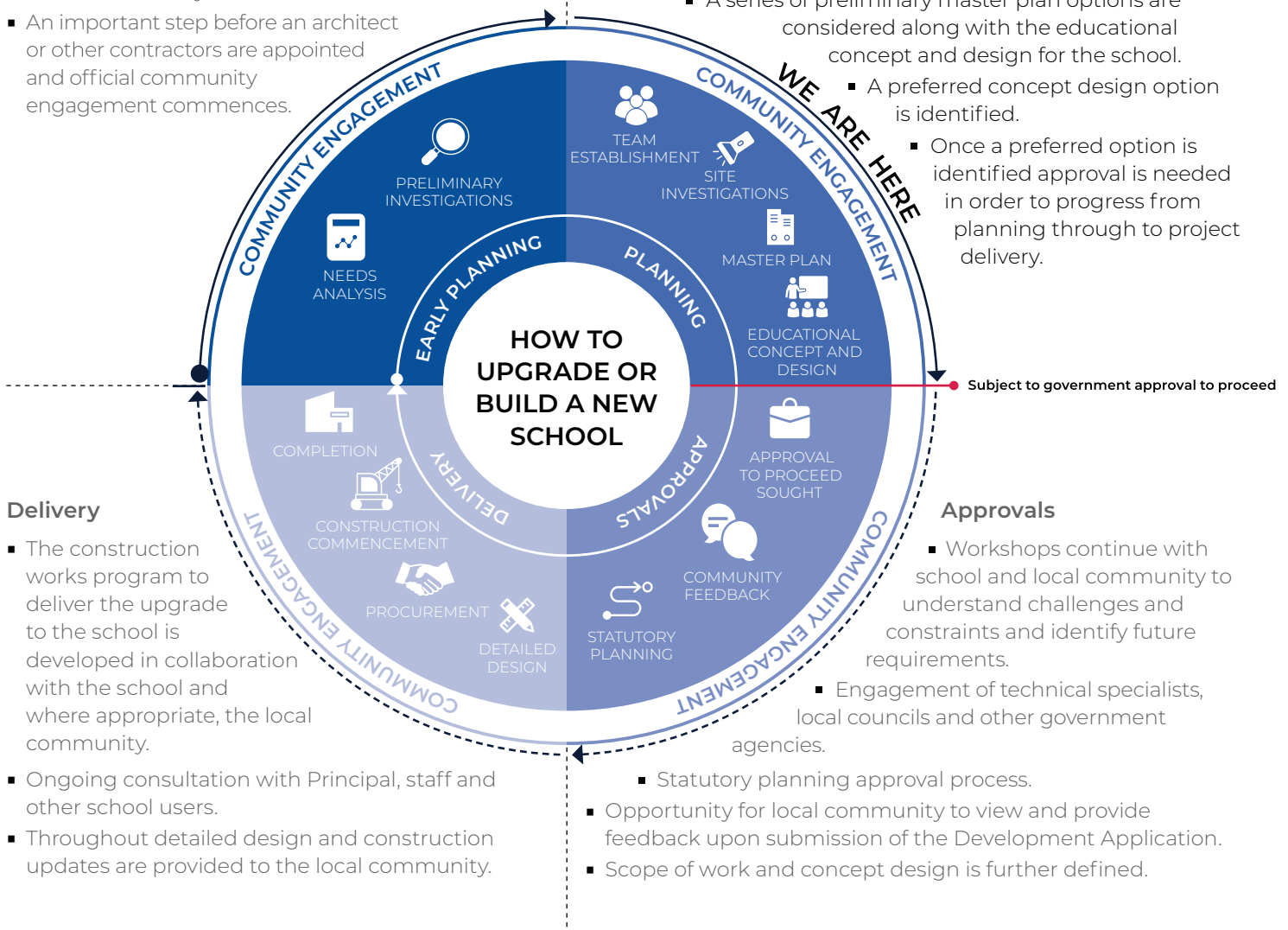
Planning is underway for a new primary school at Murrumbateman. The information below takes you through the journey of upgrading or building a new school.

### Early planning

- Consideration and studies of demographic trends, education requirements, the condition of the existing school buildings, catchment boundaries, heritage requirements, transport links and partnership opportunities.
- Doing so means that we:
  - consider the needs of the local area now and into the future.
  - ensure the right school is designed for the community.
- An important step before an architect or other contractors are appointed and official community engagement commences.

### Planning

- Consultants such as architects and project managers are appointed.
- Investigation and review of site and development of master plan options.
- Master planning considers options for the general size, shape and form of buildings for a specific school site.
- A Project Reference Group (PRG) is established.
- Operational, educational and service delivery factors are understood and considered by the PRG.



- A series of preliminary master plan options are considered along with the educational concept and design for the school.
  - A preferred concept design option is identified.
  - Once a preferred option is identified approval is needed in order to progress from planning through to project delivery.

### Delivery

- The construction works program to deliver the upgrade to the school is developed in collaboration with the school and where appropriate, the local community.
- Ongoing consultation with Principal, staff and other school users.
- Throughout detailed design and construction updates are provided to the local community.

### Approvals

- Workshops continue with school and local community to understand challenges and constraints and identify future requirements.
  - Engagement of technical specialists, local councils and other government agencies.
- Statutory planning approval process.
  - Opportunity for local community to view and provide feedback upon submission of the Development Application.
  - Scope of work and concept design is further defined.