



Artist impression of a completed learning space

New public school in Murrumbateman

Project update

March 2021

Investing in our schools

The NSW Government is investing \$7 billion over the next four years, continuing its program to deliver more than 200 new and upgraded schools to support communities across NSW. This is the largest investment in public education infrastructure in the history of NSW.

The NSW Department of Education is committed to delivering new and upgraded schools for communities across NSW. The delivery of these important projects is essential to the future learning needs of our students and supports growth in the local economy.

Project overview

We are currently undertaking planning for a new primary school at Murrumbateman. The project will deliver:

- A minimum of 16 air-conditioned teaching spaces including special program rooms to accommodate up to 370 students
- Core facilities including a hall, library, staff and administration areas
- Covered Outdoor Learning Area (COLA)
- Student amenities
- Outdoor playing space.

Progress summary and next steps

We are progressing the design for the new school and a very early contract involvement (VECI) contract has been awarded to Hansen Yuncken.

The project will need to go through a statutory approvals process for the State Significant Development Application (SSDA).

We have received the Secretary's Environmental Assessment Requirements (SEARs), which advises the studies that need to be included as part of the SSDA. We have also engaged a consultant to conduct a Social Impact Assessment (SIA) for the new school. As part of the SIA, community and stakeholder consultation on the proposed project will take place over the coming weeks.

When the SSDA is approved, and the main construction contract is awarded, construction work can start on site.

How can I get involved?

We are committed to working together with our school communities and other stakeholders to deliver the best possible learning facilities for students. Your feedback on this project is important.

Last year, School Infrastructure NSW (SINSW) conducted a survey to gather feedback on the proposal.

Thank you to the 219 people who completed the survey. See overleaf for a summary of what you said.

Please stay up to date through these Project Updates and the School Infrastructure NSW website.

For more information contact:

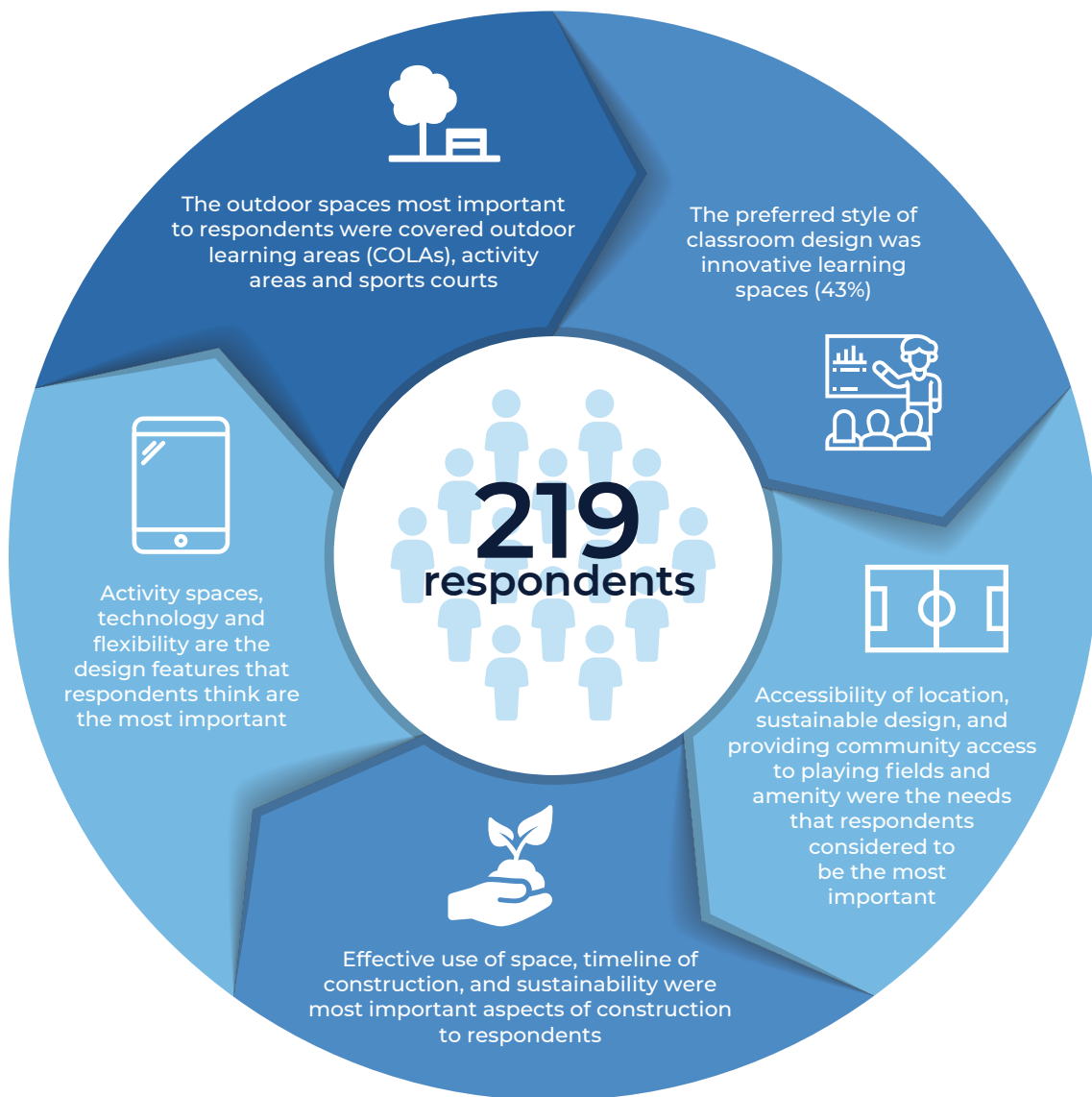
School Infrastructure NSW
Email: schoolinfrastructure@det.nsw.edu.au
Phone: 1300 482 651
www.schoolinfrastructure.nsw.gov.au

Here's a summary of what you told us

"I would like to see our indigenous heritage incorporated in a living, organic and practical manner... such as a bush tucker garden or an outdoor native garden learning area. Or song lines and language embedded into the outdoor areas using long lasting indigenous design."

"Culture should be embedded and be part of the everyday narrative of a school, not a one off activity."

"By providing locals with a school where they don't have to catch a bus at 7am and get home after 4pm. Where local kids can firm friendships in their local community so parents don't need to drive for hours for their kids to play with their friends."



For more information contact:

School Infrastructure NSW
Email: schoolinfrastructure@det.nsw.edu.au
Phone: 1300 482 651
www.schoolinfrastructure.nsw.gov.au

